



ATLANTIC COAST OBSERVER NETWORK, MD / DE / DC CHAPTER WITH DATA FROM NEARBY AREAS

PARALYZING SNOWS, PERSISTENT COLD COLDEST WINTER IN 25 YEARS

The last month of the winter of 2002-2003 will be remembered for its excessive precipitation, both frozen and liquid, and its persistent cold. The National Weather Service offices at Wilmington Delaware (ILG), Baltimore (BWI), and Dulles (IAD) each recorded its snowiest February on record. **Greg Keefer** of **Hagerstown 1E** broke its February snowfall record of 31.0" set in 1899. Temperatures were below normal for the first time since 1996 and the coldest since 1979. No extreme warmth or coldness was observed this month. **Rebecca Harvey** of **Eagle Rock** was the only observer to record a below zero reading. This was also the wettest February since 1979.

Temperatures for the first four days of the month averaged slightly above normal. Temperatures rose into the 50's to 60 in the southeastern portion and the 40's in the balance of the region except for the far western mountains where they were in the 30's to low 40's. **Floyd Abell** of **Hollywood** and **John Zyla** of **Ridge** both observed 60 degrees. More than half of stations reported their warmest temperatures of the month during this "warm" spell. A strong cold front preceded by rain and accompanied by strong winds moved across the region on the 4th. **Bobby Miller** of **Millersville 4 NE** reported a peak wind gust of 60 MPH, a record for the month of February.

A storm, which moved in from the southwest the evening of the 6th, brought a fairly uniform snow cover to the entire region. Amounts were generally in the 6 to 7 inch range except for Western Maryland and along the Atlantic Coast where lesser amounts fell. **Dan Hanson** of **Millersville 1 SE** reported 7.5" while **Jeff Stoudt** of **Laurel 2 E** reported 7.4". Temperatures rose above freezing after the snows ended, allowing roads to clear.

Ideal radiation conditions, clear skies, light winds, and a good snow cover allowed temperatures to fall into the teens and single digits on the 8th and 9th.

Roughly half of the stations recorded their coldest temperatures of the month. **Al Kreinik** of **Parkton 5 SW** observed 4 degrees and **Greg Latta** of **Frostburg** and **Lynn Albright** of **Fallston 2 NW** both observed 5 degrees.

The 10th, 11th, and 12th saw a continuation of cold temperatures with some light snowfall. A reinforcing cold front moved through the region on the 12th. Single digit morning lows occurred on the 13th and 14th in portions of New Castle County Delaware, and in Maryland's Anne Arundel and Harford Counties.

A major storm brought heavy snow and sleet to a majority of the region from the 15th to the 18th. The storm as viewed through the eyes of ACON observers appear on pages 4 to 6 of this expanded report. One to two feet plus fell across all of the region except for St Marys County and along the Atlantic Coast and the extreme southern Eastern Shore. A strong cold high pressure system northeast of the region and moist air southwest of the region provided the ideal ingredients. The storm began on Saturday, February 15th. Two to three inches of snow fell early on the 15th. It was pushed south by a strong high pressure. The snows then moved very slowly northwards the night of the 15th/16th as cold air moved south and by sunrise covered the entire region. Temperatures fell to the low to mid teens and slowly rose to near 20 by midnight Sunday, February 16th. Sleet moved up from the south Sunday evening and covered most of the region by early Monday morning. As the storm moved north, the sleet changed back to snow. This storm shutdown the region. State of emergencies were declared by the states of Maryland and Delaware. Businesses not closed as a result of the President's Day Holiday on Monday closed. Airports closed due to the storm and did not resume near normal flights until Wednesday. Stranded returning passengers were very upset when they found their cars snowbound in unplowed airport parking lots. Schools remained closed for the balance of the week

EXTREMES REPORTED BY ACON OBSERVERS

MAXIMUM TEMPERATURE

Harbeson, DE	63
Jug Bay Wetlands	63
UofD Res Ctr Georgetown	62

MINIMUM TEMPERATURE

Eagle Rock	-6
Parkton 5 SSW	4
Frostburg	5
Fallston 2 NW	5

WARMEST AVG. TEMP.

Ridge	35.1
Hollywood	34.0

COLDEST AVG. TEMP.

Eagle Rock	21.1
Frostburg	23.1

MAXIMUM PRECIPITATION

Eagle Rock	8.98
Glenmont	8.03
Forest Glen	8.02

MINIMUM PRECIPITATION

LaVale	4.85
Hagerstown 1E	5.15

MAXIMUM SNOW

Eagle Rock	81.5
Owings Mills	44.7

MINIMUM SNOW

Ridge	16.7
Hollywood	21.0

MEMBER NEWS

Kevin Shaw of **Gaithersburg 2 WNW** was hospitalized for pneumonia and complications from the March 19th to the 24th.

John Zyla of **Ridge** Mother passed away on March 31st.

at many locations. Light snow returned Monday night and early Tuesday morning as an upper air disturbance dumped around an inch of fluffy snow. The City of Wilmington Delaware declared a state of emergency on Monday and Tuesday, the 17th & 18th, which forced businesses to close and curtailed public bus service in New Castle County Delaware. The weight of the snows collapsed roofs in the region. The B&O Museum Roundhouse in Baltimore lost part of its roof. Part of the roof of a 2 year old May B. Leasure elementary school in Bear Delaware collapsed. There were reports of other collapses and precautionary building evacuations as a result of snow on roofs. Deep snows on roofs blocked some gas heater vents resulting high carbon monoxide buildups in some homes and precautionary evacuations.

Under sunny, dry conditions the region slowly dug out. Afternoon temperatures were in the 30's and 40's while nighttime temperatures fell into the teens and 20's. This permitted a slow snow melt.

Rains moved into the region Friday night, February 21st and became heavy on Saturday, February 22nd. One inch amounts were common across the entire region with the heaviest rains of 2 to 3 inches falling in the Baltimore / Washington metropolitan areas northeastward into Northern Delaware. 3.49" was reported by **Dan Hanson of Millersville 1 SE**, 3.21" by **Rich Giannola of Laurel JHU/APL**, and 3.05" by **Jeff Stoudt of Laurel 2 E** This heavy rain along with existing snows on roofs from the President's weekend snowstorm collapsed more roofs, creating urban and small stream flooding and base-

ment flooding. The most notable roof collapse was the Toys R Us store in Lanham, Maryland.

Another snowstorm, maybe the final one of this long winter season, moved into the region on the 26th. During the last three days of February a general 4 to 5 inches fell. This storm did not live up to forecasts. The heaviest snows fell in the Washington metropolitan region and in St Marys County. **Floyd Abell of Hollywood** reported 7.2", **Brian Smith of Oxon Hill** 6.4", and **Stan Rossen of Glenmont** 6.3".

St Paul Street in Baltimore.

Photo credit "Baltimore Sun" February 21



OBSERVER COMMENTS FOR FEBRUARY 2003

Gary Gallaher of Bear 2 SW, DE

Cold, wet, snowy month. Coldest since 1979, wettest since 1971, and snowiest month ever. Old record snowiest month was January 1996 when 28.7" fell. 8 days with snowfall of =>1" a new record for any month. Old record was 6 days.

21st - Heavy rains on top of a 14" snow cover caused small stream, urban, and basement flooding. Thunder mid day.

23rd - Record February minimum barometric pressure of 29.08" . Old record was 29.17" set 2/4/95. (Period of records 1992-2003)

Nate Mullins of LaVale

2nd snowiest month on record (since 1992) behind January 1996 when 41.0" fell.

4th -- Light overnight rains.

21st -- Heavy fog developed today with moderate rain this afternoon. Temperatures were right around freezing with a thin layer of ice.

22nd -- Rain heavy at times. Dense fog.

Dave Bryant of St Margarets

7th -- Quite a bit of ice on rivers and the Bay the last three weeks.

22nd -- Heavy rains & thunder caused heavy snow melt.

Dan Hanson of Millersville 1 SE

Snowiest month on record 36.6", (old 32.1 in 1/96), and the coldest February on record with an average temperature of 30.0 degrees (since 1/1/83). This was also the coldest winter on record on 30.2. Winter season snowfall 50.7".

Jeff Stoudt of Laurel 2 E

10th -- Wet snow.

22nd -- Rain, heavy late AM with occasional thunder.

Al Kreinik of Parkton 5 SW

Winter Stats: Avg max temp 37.0, Avg min temp 20.2, Avg temp 28.6. Precip 14.44", Snow 60.5"

Snowiest February on record in Parkton region, also the wettest since 1981 when 6.49" fell.

4th -- 53 mph wind gust, the strongest of the month.

23rd—26th -- Low temperatures leaves solid snow pack.

Marty Sharrow of Owings Mills 2 SE

10th -- Occasional periods of mostly light snow.

24th -- Intervals of clouds, brief flurry, milder.

Joe Manfre of Baltimore 2SE

1st -- Cloudy, cold, fog in early AM, light rain & drizzle.

24th -- Variable clouds, cold, snow & sleet shower.

27th—28th -- Late PM snow on the 27th (3.0") and early AM snow (1.5") on the 28th.

Herb Close of Manchester 1 SW

Snowiest February on record with 37.9" (old 23.1" in '93) and wettest on record with 5.92" (old 5.34" in '98).

Ralph Hartsock of Westminster 4 SSE

12th -- Zero visibility in snow squall.

23rd -- Fog, early rain showers to wet snow, windy, clearing late.

Greg Klein of Westminster 5 SSE

12th -- Early morning squall of snow with strong west winds created ground blizzard conditions for a while.

OBSERVER COMMENTS FOR FEBRUARY 2003

Bobby Miller of Millers 4 NE

Winter Stats: Avg max temp 36.3 (-4.5), Avg min temp 21.8 (-3.4), Avg temp 29.1(-3.9). Precip 13.77", Snow 61.2".

Wettest, coldest, and snowiest February on record (since 1982)

4th -- New February record wind gust of 60 MPH. Many limbs and branches down. Heavy showers after sunrise.

11th -- Snow squall in late afternoon visibility down to 1/8th mile. 0.9" fell in 30 minutes, 1/2" fell in 45 minutes.

Manuel Farfan of Frederick 4 N

11th -- Mostly cloudy day with some wet snow during 5-5:40 PM. Snow moderate to heavy at times and easily sticking to the ground.

24th -- Breezy day started cloudy then turned partly cloudy. Warm with a high of 44.

25th -- Very windy and cold day with the maximum temperature reported at 0000 hours.

Rich Giannola of JHU/APL OF Laurel

10th -- SNSN-/SNSH in afternoon with large snowflakes 2:30-3:00PM, tapered to flurries and ended by 3:30 PM.

Rob Cohen of Potomac 4 N

Snowiest month on record. Wettest February on record.

9th -- Tied daily record minimum temperature.

22nd -- Heavy rain, thunder at 11:30 AM. February record daily rainfall (2.03")

Rich Giannola of Olney

Snowiest month records began in July 1986.

Stan Rossen of Glenmont 1 NNE

Wettest February on record. Old record was 6.22" set in 1979. It was also the snowiest month on record. The old record was 33.7" set in February 1979.

Kevin Shaw of Gaithersburg 2 WNW

An incredible month of numerous snows. My snowiest month on record surpassing the 35.0" in February 1979.

Joe Terry of Forest Glen

Snowiest and 3rd wettest since station inception (1994). No temperature extremes; coldest occurred during snow events, otherwise rather mild.

6th & 7th -- Major snowstorm. Up to 3/4" per hour snowfall rate.

4th -- Highest wind gust since 1/13/00-- 40 MPH.

22nd -- Max & min relative humidity both 100%. Heavy rains and thunder today.

Bill Hudelson of South Bowie

1st -- Overcast, drizzle, and light rain with moderate to dense for during the morning and afternoon.

4th -- Overcast with rain AM, broken - scattered PM peak wind gust 36 MPH from the West.

27th - 28th -- Snow began 1530 on the 27th and ended by 1000 on the 28th. Total 3.6" fell

Brian Smith of Oxon Hill

11th -- 41 degrees today - First migratory robin.

Floyd Abell of Hollywood

4th -- AM showers -- fair, breezy PM. 60 degrees today.

John Zyla of Ridge

24 of 28 days with snow on the ground. St Marys County record for snow days has been broken! (according to my tabulations, which includes info from 5 stations in the county. It snowed at least a trace or more 34 days this season. (That breaks the old record of 30 recorded for the season on 1903-1904.)

Greg Keefer of Hagerstown 1 E

This was the snowiest February on record with a total of 34.8" breaking the old record of 31.0" in 1899. This is the 2nd wettest February on record with 5.15" of precipitation. The wettest is 5.20" set in 1984.

12th -- Temperatures rose overnight to 36 ahead of a strong cold front. Then strong WNW winds blew in around 5 AM with gusts to 48 MPH and some snow showers. Colder and windy all day.

19th -- Warmer today high of 40. A good bit of snow felt today. Some light wet snow late this afternoon and early evening with large flakes but no accumulation.

Jim Vaughn of Smithsburg 2 NE

Wettest, 5.78" (old record 5.07" in 1998), & snowiest 37.3" (old record 28.2" in 1983) February. Also the second snowiest month on record behind 42.6" in 1/96.

Robert Rickell of Hanover 2 S PA

10th -- Fog & Sleet

22nd -- Fog and minor flooding on local streams.

23rd -- Rain ended as sleet and snow.



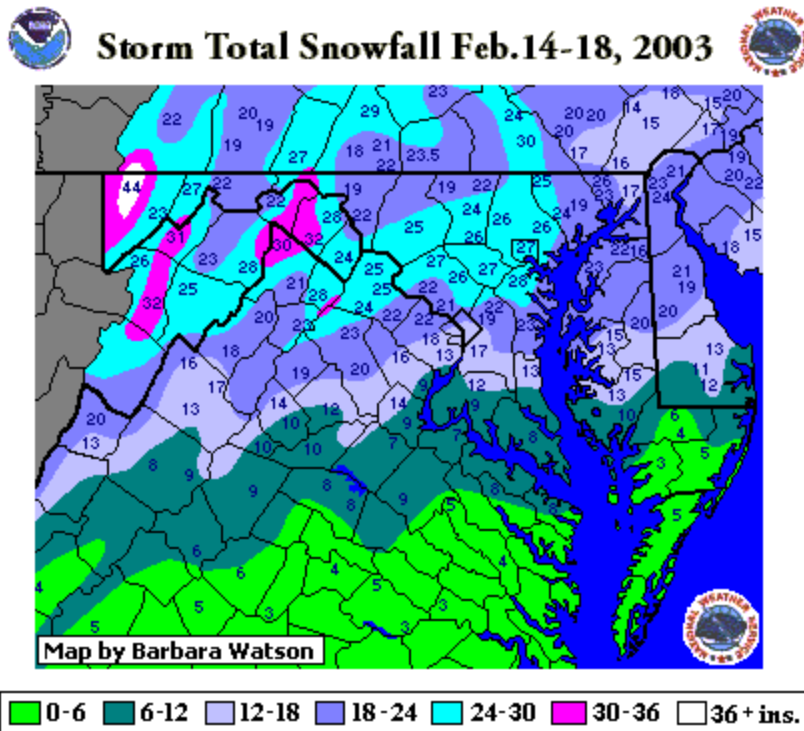
Fox Run Shopping Center, Bear DE February 18
Photo from Gary Gallaher

Compiled by Gary Gallaher, MD/DE ACON Data Collector and Report Writer, from data received from dedicated observers. Without your observations each month this report will not be possible.

SPECIAL REPORT ON THE PRESIDENT'S DAY SNOWSTORM AND HEAVY RAINS ON THE 22nd

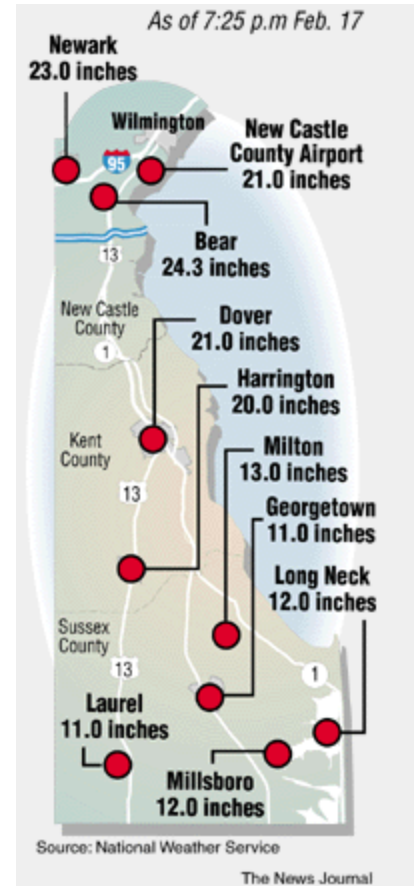
A paralyzing snowstorm hit the region over the President's Day Weekend, (15th-18th). The next weekend saw some heavy rains on top of the heavy snow cover. This report includes information which I gathered and more importantly the view from our ACON observers.

First lets look at some graphics the snowfall from the President's Day Weekend storm.



Map above from the National Weather Service Sterling site.

Map at the right from Wilmington Delaware's "The News Journal" February 18, 2003. Snowfall totals from public information statements issued by NWS Mt. Holly, NJ.



Now for some details and pictures from ACON Members and the local press.

Gary Gallaher of Bear 2 SW DE: 16th - This was the heaviest daily snow fall on record breaking the 20.7" which fell on 1/7/96. Snow began shortly after 6AM and became heavy shortly after 7 AM. The snow made a very slow movement northwards. Winds increased with time and peaked at 38 MPH shortly before midnight. Snow mixed with sleet around 11 PM.

Nate Mullins of LaVale: 15th -- Light to moderate snow overnight tapered to flurries by 8 AM. Snow continued to skirt just to the south of us most of the day. **16th** -- Steady snow overnight with 7" on the ground at 7 AM. Steady snow continued to pile up all day long. Snow was heavy at times this evening with rates at least better than an inch per hour.

Dan Hanson of Millersville 1 SE: 15th-18th - Massive four day snowstorm broke the previous snowstorm of 23.5" set 2/11/83.

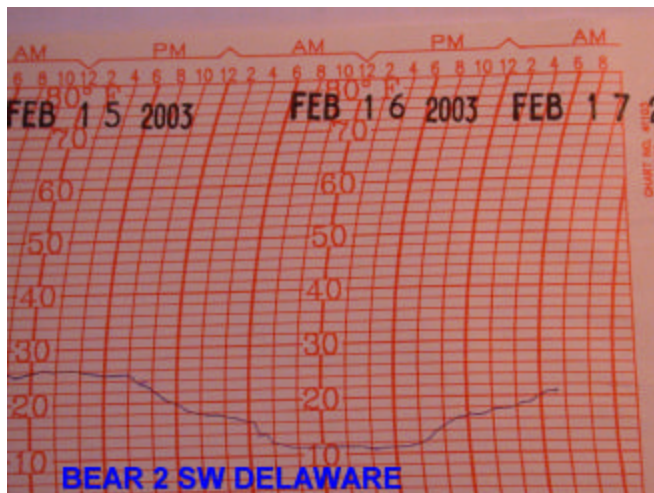
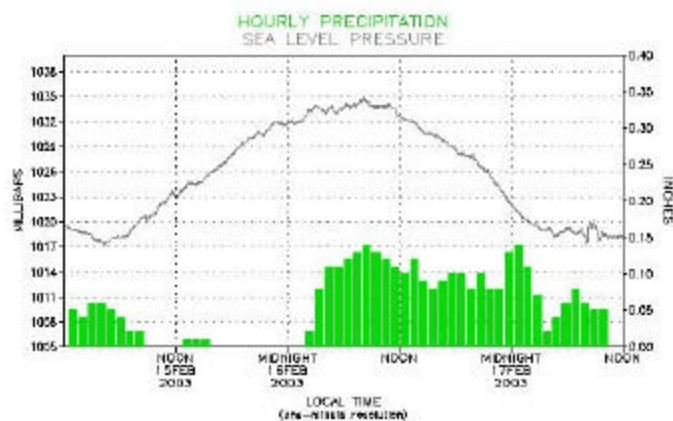
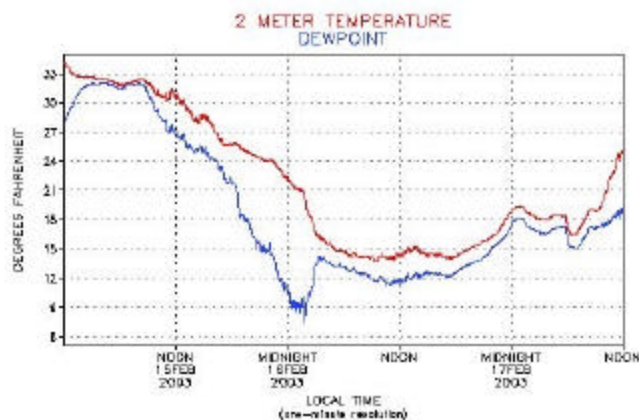
Dave Bryant of St. Margarets: 16th - Heavy snowstorm temperatures in teens, 20-25 knot winds, blowing / drifting snow.

Jeff Stoudt of Laurel 2 E: 16th - Heavy snow, thunder 0720 hours; sleet late evening.

Al Kreinik of Parkton 5 SW: 16th/17th - Heavy snow leaving 21" and 24" respectively on the ground, also blowing and drifting snow with glaze.

Joe Manfre of Baltimore 2 SE: 16th - Heavy snow, 20", and thunder 17th - Snow and sleet ending, 3.5".

Major Snowstorm of Feb 15–17, 2003



The above temperature chart from Gary Gallaher of Bear 2 SW DE shows the extreme cold temperatures during the storm.

The two charts on the left are from Joe Terry of Forest Glen. The top one is a plot of the temperature (in red) and the dew point (in blue). The lower chart is a graph of the barometric pressure (black) and hourly precipitation (green).

Lower left: Photo from David Roth of Montgomery Village 1 SW. Street in front of David's home.

Lower right: Photo from Nate Mullins of LaVale.



Herb Close of Manchester 1 S: 16th - Snowfall 18.5", liquid equivalent 1.61" (core sample from snowboard)

Ralph Hartsock of Westminster 4 SSE: 16th - Extremely heavy snow, blowing and drifting. Ralph reported that many greenhouses collapsed under the weight of the heavy snow. The Carrollton Mall closed for days as a result of thoughts the roof might cave in.

Bobby Miller of Millers 4 NE: 16th - Heavy snowstorm, visibility 1/4 mile or less from late morning till 10PM. New snows since last observation: 10AM 3.2", 1PM 6.3", 4PM 10.9". Dry, blowing and drifting. Higher moisture content in evening (6PM 16th to midnight) with 0.38" Precipitation and 3.5" snow. 17th - About 2 1/2 hours of snow/sleet mix 5 AM to 7:30 AM. Maximum depth of snow on ground of 23.5" at 5 AM. **22nd** - Moderate to heavy rain. Small streams over banks. Rivers to bank full.

Manuel Farfan of Frederick 4 N: 16th - My first major big snow storm! Snow began falling around 3 AM leaving 15.5" of new snow on the ground by midnight. Snow, heavy at times with several hours of heavy snow falling at a rate of 1.5" per hour. Hard to avoid snow compacting when measuring but did my best by cleaning my board every 6 inches until 8 PM. Strong winds with blowing snow during the night made all my snow shoveling worthless: What a big day in my life!

Rob Cohen of Potomac 4 N: 16th - Snow all day changing to sleet by 9 PM. **22nd** - Heavy rains 2.03", thunder at 11:30 AM. Record February daily rainfall.

Kevin Shaw of Gaithersburg 2 WNW: 16th - Near blizzard with my third greatest ever daily snowfall total of 19.9". 2.83" core sample taken 4 AM on the 18th, prior to any melting, corroborating my water equivalents determined by numerous collecting and melting of my 4 inch gauge catch.

Joe Terry of Forest Glen: 16th - Snow began ~0130 hours. Heaviest snow of the day occurred before sunrise, 2+inches per hour. Frequent moderate snow with temperatures only in the mid-upper teens midday. Snow changed to sleet by 2130 hours.

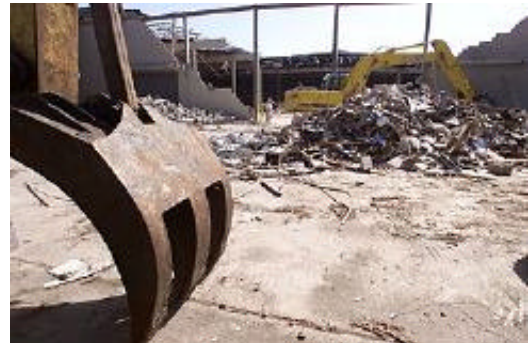
Bill Hudelson of South Bowie: 16th - Snow began 0300 hours, changing to sleet 2100 hours. Bill reported the following roof collapses as a result of the snowfall of the 16th/17th and or the heavy rains of the 22nd: Toys R Us, Lanham; a rental center in Odenton; a shopping center in Odenton; and Eckerd Drug Store in Waldorf. Also several boat storage facilities in Anne Arundel County—Edgewater specifically.

Greg Keefer of Hagerstown 1 E: 16th - Snow began over night around 2 AM with 4 new inches by 8 AM. Snow all day with very cold temperatures in the mid teens. Snow was steady and moderate all day heavy at times. By midnight 16 new inches had fallen. **17th** - Snow overnight with sleet mixed in. Sleet was heavy at times and compacted the snow amounts.

Robert Rickell of Hanover 1 S PA: 16th / 17th - Snow began falling here at 4:30 PM on the 16th, and continued heavily through the day, along with occasionally gusty winds which caused some drifting as well. Snow became mixed with sleet after 1 AM on the 17th, and this mix of snow and sleet fell until around 7 AM, when the precipitation changed back to a period of all snow before ending around 10 AM. Also, some fog and freezing drizzle fell at this location during the evening of the 17th. Nearly all roads were closed from noon the 16th thru noon on the 17th, as well as most businesses closed during the two day period.



Left: Toys R Us Lanham, MD. February 22 Photo credit AP.



Right: Dover AFB Cargo Facility Clean-up. Photo credit. "The News Journal", Wilmington DE



Left: Snowdrift covered with sand on the Rehoboth Beach boardwalk. Photo credit "The News Journal", Wilmington DE



Right: B&O Museum Baltimore Photo credit "Baltimore Sun" February 18.

ACON MD /DE / DC
FEBRUARY 2003 SUMMARY

OBSERVER	STATION COUNTY, STATE	TEMPERATURE									PEAK WIND			PRECIPITATION					SNOWFALL				OBS TIME		
		AVG MAX	AVG MIN	MEAN	MAX	DAY	MIN	DAY	MAX >=90	MAX <=32	MIN <=32	GUST	DIR	DAY	TOTAL	MAX DAY	DATE	YEAR	DAYS >=.01"	DAYS >=1"	TOTAL	MAX DAY		DATE	SEA- SON
<i>New Castle, Delaware</i>																									
Canavan, Jim	Wilmington 4 NNE	34.7	21.0	27.9	48	21	7	13+	0	9	24				4.29	2.15	22	6.68	9	1	33.7	16.0	16	51.2	2400
Gallaher, Gary	Bear 2 SW	36.8	20.4	28.6	48	2+	6	14	0	9	25	50	NW	12	6.80	2.13	22	8.60	16	2	39.5	22.0	16	56.4	2400
NWS Wilmington	New Castle Co. Apt.	35.3	22.0	28.7	47	4	7	9	0	9	24	48	W	4	5.25	2.15	22	7.04	15	1	31.6	17.0	16	46.0	2400
U of D DE Climatologist	Newark Pearson Hall	36.8	24.1	30.5	47	3+	11	16	0	8	24	52		4	4.92	1.42	22	6.36	15	1					2400
<i>Sussex, Delaware</i>																									
NWS Georgetown	Sussex Co. Airport	40.6	26.5	33.6	62	23	16	14	0	2	23	44	ENE	17	5.30	1.03	22	6.22	14	1					2400
U of D Research & Ed Ctr	Georgetown	41.2	26.3	33.8	62	23	16	14	0	1	23				4.73	0.95	17	5.68	14	0	23.9	15.0	16	26.3	2400
U of D Warrington Farm	Harbeson	40.8	25.6	33.2	63	23	15	14	0	2	24				4.47	1.12	17	5.60	14	1				2.4	2400
<i>Allegany, Maryland</i>																									
Latta, Greg	Frostburg	29.9	16.2	23.1	42	5+	5	8	0	17	28				5.67	2.17	17	8.34	19	1	42.3	18.7	17	84.3	0700
Mullins, Nate	LaVale	36.0	21.5	28.8	48	3	11	6	0	8	26				4.85	1.77	16	7.49	16	1	36.5	18.0	16	61.5	2400
<i>Anne Arundel, Maryland</i>																									
Bryant, Dave	St. Margarets	38.6	24.1	31.4	49	4+	15	8+	0	3	25				7.06	2.27	22	9.26	15	2	33.5	17.5	16	47.4	2100-P 2400-T
Hanson, Dan	Millersville 1 SE	37.8	22.3	30.1	50	4	10	9	0	4	24	44	W	12	7.56	3.02	22	10.27	16	2	36.6	18.0	16	51.3	2400
Jug Bay Wetlands	Lothian	41.3	23.3	32.3	63	5	9	14	0	3	25				6.98	1.55	17	9.10	13	3	22.0	7.0	7	28.0	0900
NWS Baltimore	BWI Airport	37.5	22.8	30.2	50	4	9	9	0	5	25	49	W	23	6.70	2.30	22	9.29	15	2	40.5	21.8	16	55.6	2400
Stoudt, Jeff	Laurel 2 E	-	-	-	-	-	-	-	-	-	-				7.66	2.68		10.66	14	2	37.7	18.5	16	52.4	2400
<i>Baltimore, Maryland</i>																									
Kreinik, Al	Parkton 5 SW	37.1	20.5	28.8	49	20	4	9	0	9	24	53	NW	4	6.10	1.71	22	9.15	16	3	38.1	16.5	16	61.0	2200
Sharrow, Marty	Owings Mills 2 SE	35.9	20.8	28.4	51	20	10	9+	0	7	26	44		4	6.38	1.72	16	6.38	17	2	44.7	24.0	16	60.4	2400
<i>Baltimore City, Maryland</i>																									
Manfre, Joe	Baltimore 2 SE	38.3	27.6	33.0	50	4	14	16	0	4	21				7.44	2.23	22	10.67	16	2	41.8	20.0	16	56.3	1800
Maryland Science Ctr	Baltimore Inner Harbor	38.1	27.2	32.7	51	4	14	16	0	5	23				7.37	2.10	22	10.21	14	2					2400
<i>Carroll, Maryland</i>																									
Close Jr, Herb	Manchester 1 SW	35.3	21.8	28.6	48	20	9	16	0	12	27	51		4	5.92	1.61	16	8.22	17	2	37.9	18.5	16	63.1	2300
Hartsock, Ralph	Westminster 4 SSE	37.4	21.8	29.6	49	21	10	9	0	8	25	56		4	5.51	1.64	22	8.08	16	1	34.6	13.8	16	59.8	2100
Klein, Greg	Westminster 5 SSE	33.9	19.9	26.9	45	21	10	16	0	12	27				5.41	1.60	22	8.15	16	2	38.0	18.0	16	64.5	2200
Miller, Bobby	Millers 4 NE	36.0	21.7	28.9	47	20	10	16+	0	7	24	60	WSW	4	5.59	1.59	22	8.37	15	2	35.9	12.8	16	60.9	1800
<i>Frederick, Maryland</i>																									
Farfan, Manuel	Frederick 4 N	36.4	22.8	29.6	47	4	12	9+	0	5	24				6.00	1.34	22	9.67	16	2	33.5	15.5	16	54.7	2400
<i>Garrett, Maryland</i>																									
Harvey, Rebecca	Eagle Rock	29.3	12.8	21.1	50	23	-6	11	0	21	28				8.98	3.77	17	12.84	20	2	81.5	29.0	17	175.8	0800
<i>Harford, Maryland</i>																									
Albright, Lynn	Fallston 2 NW	38.4	18.5	28.5	53	21	5	9	0	5	25				6.26	2.00	16	8.81	17	2	34.3	16.0	16	53.8	2400

**ACON MD /DE / DC
FEBRUARY 2003 SUMMARY**

OBSERVER	STATION COUNTY, STATE	TEMPERATURE									PEAK WIND			PRECIPITATION					SNOWFALL				OBS TIME			
		AVG MAX	AVG MIN	MEAN	MAX	DAY	MIN	DAY	MAX >=90	MAX <=32	MIN <=32	GUST	DIR	DAY	TOTAL	MAX DAY	DATE	YEAR	DAYS >=.01"	DAYS >=1"	TOTAL	MAX DAY		DATE	SEA- SON	
<i>Howard, Maryland</i>																										
Giannola, Rich	Laurel JHU / APL	38.0	23.7	30.9	50	4	11	16	0	4	24	43	W	23	7.82	2.63	22	10.77	15	2	40.4	28.0	15-18	57.7	2400	
<i>Montgomery, Maryland</i>																										
Cohen, Rob	Potomac 4 N	38.1	25.0	31.6	49	24	13	9	0	4	24				6.80	2.03	22	9.93	15	2	34.6	16.5	16	51.0	2100	
Giannola, Rich	Olney 1 S	37.1	22.8	30.0	48	3+	11	8	0	5	25				7.29	2.87	16-17	9.99	11	2	39.7	21.8	16-17	57.8	2400	
Roth, David	Montgomery Village 1SW	38.2	24.6	31.4	49	4	13	9	0	4	24	23		4	7.15	2.31	16	9.88	14	2	34.6	15.4	16	51.6	2400	
Rossen, Stan	Glenmont 1 NNE	39.5	23.0	31.3	51	20	10	9	0	4	25				8.03	2.59	16	10.79	16	2	38.9	19.4	16	56.8	2400	
Scafide, Tony	Bethesda	40.0	23.9	32.0	51	4	12	16	0	3	24				<u>4.79</u>	2.15	22	<u>7.44</u>	17	1					2400	
Shaw, Kevin	Gaithersburg 2 WNW	38.3	21.1	29.7	50	20	9	9	0	5	27				6.62	1.93	16	9.59	15	2	38.5	19.9	16	57.2	2400	
Terry, Joe	Forest Glen	40.4	25.7	33.1	52	4+	15	16	0	4	23	40	W	4	8.02	2.56	16	10.93	15	2	33.2	16.1	16	50.1	2400	
Wash Gas Light	Rockville 1 NE	37.6	24.4	31.0	48	4	14	16	0	5	24				<u>5.10</u>	1.87	21	<u>7.49</u>	9	2	36.5	16.0	16	56.6	2400	
<i>Prince Georges, Maryland</i>																										
Hudelson, Bill	South Bowie	38.5	24.2	31.4	50	4	12	9	0	3	24	37	WNW	23	7.31	2.25	22	10.64	15	2	29.3	14.0	16	40.7	2400	
Smith, Brian	Oxon Hill	41.0	26.8	33.9	53	4+	14	16	0	3	22				7.56	2.25	22	10.52	16	2	30.7	13.2	16	42.2	2000	
<i>St. Marys, Maryland</i>																										
Abell, Floyd	Hollywood	41.6	26.3	34.0	60	4+	14	9	0	3	22	36		23	6.37	1.52	16	7.98	15	2	21.0	6.6	16	32.7	2400	
Van Wie, Michael	Oraville																							4.1	2400	
Zyla, John	Ridge	42.6	27.6	35.1	61	23	18	16	0	1	22	32	NW	23	5.76	1.18	16	7.75	17	1	16.7	4.7	26	28.8	2400	
<i>Washington, Maryland</i>																										
Keefer, Greg	Hagerstown 1 E	35.3	21.3	28.3	46	20	11	16	0	8	27	48	NW	12	5.15	1.58	16	7.43	16	2	34.8	16.0	16	56.7	2400	
Vaughn, Jim	Smithsburg 2 NE	36.6	20.7	28.7	49	3	9	16	0	8	27	54	W+	12+	5.78	1.98	16	8.69	17	2	37.3	18.0	16	60.7	2000	
<i>Wicomico, Maryland</i>																										
NWS Salisbury	Wicomico Co. Apt	42.3	24.7	33.5	63	23	12	14	0	2	25	48	WNW	23	6.24	1.92	17	7.62	15	1	10.9	4.0	16	18.7	2400	
<i>York, Pennsylvania</i>																										
Rickell, Robert	Hanover 2 S, PA	33.6	18.2	25.9	46	3	8	16+	0	11	28				6.03	1.55	22	8.88	16	3	37.3	14.0	16	63.2	2100	
<i>Arlington, Virginia</i>																										
NWS Washington Nationa	National Airport	39.7	27.6	33.7	54	4	15	16	0	4	21	49	NNW	23	5.45	2.27	22	7.86	16	1	28.7	13.3	16	40.3	2400	
<i>Loudon, Virginia</i>																										
NWS Washington Dulles	Dulles Airport	37.9	22.7	30.3	51	4	7	9	0	0	26	45	W	4	5.13	1.69	22	7.82	16	2	34.9	15.9	16	48.2	2400	
SECTION AVERAGE		37.7	22.9	30.3											6.26										35.3	

NOTES:

M or UNDERLINE = MISSING DATA
> = INCLUDED IN NEXT DAYS DATA

GARY GALLAHER 4/3/03

**ACON MD / DE / DC
FEBRUARY 2003 DAILY TEMPERATURES**

	1	2	3	4	5	6	7	8	9	10	11	12	13	14	15	16	17	18	19	20	21	22	23	24	25	26	27	28	29	30	31	AVG	OBS TIME			
WILMINGTON 4NNE CANAVAN	39 40	40 32	47 26	43 33	34 25	25 15	35 25	27 17	37 13	34 24	30 15	30 19	19 7	33 7	33 17	14 9	26 25	34 17	41 25	44 27	48 22	45 34	46 36	38 25	34 20	34 16	27 20	31 26	38 26			34.7 21.0	2400 EST			
BEAR 2 SW, DE GALLAHER	37 34	44 32	48 28	48 35	37 23	31 15	35 27	30 9	40 6	35 26	32 18	36 13	31 9	38 7	30 20	28 11	36 17	30 19	20 12	28 23	36 17	41 35	47 31	48 20	45 17	42 17	33 23	26 27	31 27	40 27			36.8 20.4	2400 EST		
WILMINGTON , DE NWS NEW CASTLE CO APT	36 34	43 33	46 29	47 35	36 21	31 18	36 26	30 15	37 7	34 28	33 18	36 18	28 14	35 10	31 19	19 11	28 17	32 21	35 13	43 25	43 20	39 34	44 31	39 25	34 22	34 20	26 24	31 28	37 27			35.3 22.0	2400 EST			
U of D DE Climatologist Newark Pearson Hall	39 35	44 36	47 31	47 36	37 26	31 19	35 26	30 17	40 15	35 29	34 21	36 21	31 14	36 15	32 19	19 11	28 17	36 23	40 21	46 31	47 25	41 35	47 32	42 26	36 22	25 20	32 23	38 28			36.8 24.1	2400 EST				
GEORGETOWN, DE NWS SUSSEX CO APT	41 37	45 33	50 29	56 36	37 25	35 20	34 28	32 18	42 19	35 31	36 26	41 20	36 22	40 16	33 25	35 19	35 24	43 28	46 28	46 36	55 33	62 27	53 27	36 27	30 26	34 28	34 28					40.6 26.5	2400 EST			
GEORGETOWN, DE UoD RESEARCH & ED CTR	41 35	44 34	52 29	56 35	36 31	36 20	38 28	32 19	42 17	35 32	38 25	40 19	37 20	41 16	36 25	34 18	38 28	35 24	44 23	48 27	58 27	62 33	54 27	37 27	30 26	34 27	34 30					41.2 26.3	2400 EST			
HARBESON, DE UoD WARRINGTON FARM	41 35	45 30	50 27	56 36	37 22	35 18	32 28	32 18	42 17	35 30	36 25	42 20	36 22	41 15	36 25	33 19	36 24	36 24	43 22	47 26	47 26	56 35	63 33	53 26	36 27	30 27	34 28	34 27					40.8 25.6	2400 EST		
FROSTBURG LATTA	29 24	34 27	36 26	38 26	42 15	23 14	29 13	29 5	22 6	31 20	32 15	28 15	20 11	24 12	35 17	25 6	25 12	21 28	21 20	39 20	42 20	40 25	40 31	34 19	37 15	22 6	21 11	23 16					29.9 16.2	0700 EST		
LAVALE MULLINS	37 32	42 31	48 24	43 28	30 20	28 11	36 27	26 12	41 15	36 26	30 16	33 18	28 18	40 20	16 18	33 14	38 14	46 23	47 38	37 28	38 19	36 33	46 25	46 23	42 19	33 12	32 16	37 22					36.0 21.5	2400 EST		
ST MARGARETS BRYANT	38 34	46 33	47 28	47 49	36 39	36 22	38 23	35 15	44 15	37 28	35 22	37 22	37 18	39 17	33 22	29 16	40 20	41 24	48 27	45 25	39 34	44 28	49 24	37 22	28 21	35 25	38 29					38.6 24.1	1700 EST			
MILLERSVILLE 1SE HANSON	38 33	46 33	46 24	50 35	36 20	34 18	36 25	33 13	42 10	36 28	36 22	37 19	36 18	40 13	33 21	22 13	27 18	39 22	40 16	48 26	44 23	39 33	43 31	47 24	37 18	31 17	36 23	31 28					37.8 22.3	2400 EST		
LOTHIAN JUG BAY	36 32	42 32	48 25	50 38	63 25	39 20	37 26	39 12	40 10	47 24	37 21	39 22	39 19	42 9	42 27	34 16	23 15	29 15	41 20	48 30	54 21	46 34	44 34	43 23	54 28	39 24	29 33					41.3 23.3	0900 EST			
BALTIMORE NWS BWI APT	38 34	46 31	48 26	50 36	36 34	37 21	40 24	30 11	40 9	35 29	35 22	37 19	34 18	40 15	32 22	28 19	37 22	41 15	46 26	42 22	42 34	42 31	46 25	38 20	25 18	31 24	36 29					37.5 22.8	2400 EST			
LAUREL 2 E STOUDT																																				
PARKTON 5SW KREINIK	36 33	44 35	47 26	48 34	34 24	32 14	37 26	30 7	41 4	34 28	35 17	32 14	32 15	40 8	31 21	25 11	39 14	43 22	49 13	49 27	42 19	43 34	42 30	36 20	26 17	31 13	39 22					37.1 20.5	2200 EST			
OWINGS MILLS 2SE SHARROW	35 32	42 33	44 26	45 33	35 23	33 18	34 24	28 13	38 10	34 23	34 20	32 17	31 16	39 15	33 18	19 10	25 13	35 21	41 14	51 26	44 21	39 30	40 28	42 20	37 19	25 14	31 20	39 24					35.9 20.8	2400 EST		
BALTIMORE 2SE MANFRE	40 34	46 37	47 37	50 37	34 28	34 26	37 27	32 22	41 24	34 30	36 25	36 27	35 23	40 23	35 27	27 14	28 19	38 24	40 25	46 35	46 29	42 35	43 35	45 29	40 30	25 20	33 24	38 30					38.3 27.6	1800 EST		
BALT INNER HARBOR MD SCIENCE CENTER	40 35	46 37	45 33	51 37	38 29	33 26	37 28	31 22	42 24	38 31	36 25	37 27	35 23	40 24	35 22	22 14	28 19	38 24	39 25	47 32	42 29	41 35	44 32	47 29	40 25	26 20	32 24	37 30					38.1 27.2	2400 EST		
MANCHESTER 1SW CLOSE	35 32	44 30	45 27	45 32	32 17	32 17	40 24	26 14	39 18	32 27	31 22	31 19	36 15	31 17	17 9	22 11	37 19	41 22	48 32	46 31	40 33	45 26	40 20	35 17	23 15	27 19	37 24					35.3 21.8	2300 EST			
WESTMINSTER 4 SSE HARTSOCK	36 31	43 33	47 27	46 33	34 23	36 16	39 27	25 16	38 10	38 27	36 18	32 21	32 16	40 12	32 21	22 11	26 12	36 21	45 16	42 30	49 22	41 34	43 29	44 21	37 14	29 21	32 25	46 21					37.4 21.8	2100 EST		
WESTMINSTER 5 SSE KLEIN	34 30	38 29	43 24	42 30	31 19	32 15	37 24	25 12	37 13	35 26	32 15	30 17	28 15	36 13	18 10	18 13	21 19	32 18	38 18	38 28	45 24	38 33	40 26	38 15	33 11	28 19	30 23	41 19					33.9 19.9	2200 EST		
MILLERS 4NE MILLER	35 33	43 34	46 27	46 36	37 24	32 15	36 25	31 11	37 12	33 26	33 17	33 20	29 16	36 16	33 10	22 10	23 20	35 16	42 30	47 23	46 34	41 31	43 20	40 23	38 12	25 20	30 24					36.0 21.7	1800 EST			
FREDERICK 4 N FARFAN	40 33	44 35	45 26	47 34	34 21	36 21	37 27	29 14	40 12	38 29	35 21	36 25	33 21	40 21	34 12	19 14	25 23	39 21	41 23	45 19	41 34	38 30	41 26	43 16	36 14	24 22	28 26					36.4 22.8	2400 EST			
EAGLE ROCK HARVEY	32 22	32 20	32 24	46 26	39 8	23 8	23 -2	20 0	20 14	30 10	26 8	20 -6	20 10	24 10	32 22	24 4	10 -4	20 10	22 13	40 20	40 32	42 30	50 32	32 18	39 10	20 0	18 0	30 16					29.3 12.8	0800 EST		
FALLSTON 2 NW ALBRIGHT	37 34	44 30	48 25	48 33	34 15	35 14	39 22	29 6	41 5	37 26	36 16	33 11	33 9	43 7	32 18	28 15	39 20	44 12	48 22	53 18	42 34	46 29	46 17	35 12	28 10	35 21	44 27					38.4 18.5	2400 EST			

**ACON MD / DE / DC
FEBRUARY 2003 DAILY TEMPERATURES**

	<u>1</u>	<u>2</u>	<u>3</u>	<u>4</u>	<u>5</u>	<u>6</u>	<u>7</u>	<u>8</u>	<u>9</u>	<u>10</u>	<u>11</u>	<u>12</u>	<u>13</u>	<u>14</u>	<u>15</u>	<u>16</u>	<u>17</u>	<u>18</u>	<u>19</u>	<u>20</u>	<u>21</u>	<u>22</u>	<u>23</u>	<u>24</u>	<u>25</u>	<u>26</u>	<u>27</u>	<u>28</u>	<u>29</u>	<u>30</u>	<u>31</u>	<u>AVG</u>	<u>OBS TIME</u>	
LAUREL JHU / APL	38	45	49	50	34	36	37	34	44	36	37	36	35	43	33	19	25	41	41	46	42	40	44	47	37	26	32	36				38.0	2400	
GIANNOLA	33	34	28	34	22	22	26	16	18	29	22	25	19	16	19	11	16	21	20	30	26	34	30	25	20	19	22	27				23.7	EST	
POTOMAC 4N	38	46	47	48	36	36	37	34	42	36	38	36	36	40	35	24	25	38	43	48	46	40	40	49	39	24	30	37				38.1	2100	
COHEN	32	36	28	35	26	23	28	18	13	27	24	24	21	22	24	14	15	24	19	30	27	35	34	26	24	21	23	27				25.0	EST	
OLNEY 1 S	38	46	48	48	34	37	37	31	41	35	38	34	35	42	33	21	22	37	42	43	46	39	39	44	36	26	31	37				37.1	2400	
GIANNOLA	34	32	26	34	19	19	27	11	14	28	19	20	19	16	21	14	17	22	18	28	27	34	30	23	19	18	22	26				22.8	EST	
MONTOGOMERY VILLAGE	40	46	48	49	36	36	37	31	41	38	38	37	35	41	35	23	26	38	43	45	45	41	42	46	38	27	33	39				38.2	2400	
ROTH 1SW	35	34	28	35	22	22	29	16	13	31	23	25	22	18	23	14	15	24	20	28	27	36	31	25	21	21	24	28				24.6	EST	
GLENMONT 1NNE	39	49	48	50	37	37	38	37	46	36	39	36	39	42	34	22	26	43	46	51	47	40	41	50	38	26	31	37				39.5	2400	
ROSSEN	34	32	26	34	21	21	27	12	10	29	22	19	21	15	22	14	17	23	15	27	25	35	29	24	19	20	24	28				23.0	EST	
BETHESDA	40	49	49	51	37	37	39	36	44	37	40	38	39	43	37	25	28	41	44	50	49	41	41	49	39	28	33	39				40.0	2400	
SCAFIDE	33	33	28	35	24	23	26	16	16	30	21	22	20	20	22	12	14	21	21	30	28	33	30	23	21	19	23	26				23.9	EST	
GAITHERSBURG 2WNW	39	48	47	49	36	36	39	34	43	35	39	35	38	41	35	21	26	39	44	50	45	39	40	47	32	27	31	38				38.3	2400	
SHAW	31	30	25	32	20	18	26	14	9	27	23	19	18	15	20	11	12	21	13	22	25	34	27	22	15	19	19	25				21.1	EST	
FOREST GLEN	40	49	49	52	38	37	42	38	46	37	40	37	40	43	35	23	28	44	46	52	48	40	41	50	38	28	32	38				40.4	2400	
TERRY	35	34	29	35	24	24	28	19	16	33	24	25	22	21	23	15	17	24	22	31	30	36	31	26	23	21	24	28				25.7	EST	
ROCKVILLE 1NE	38	46	47	48	34	35	35	34	41	37	39	37	36	42	32	22	24	37	44	46	46	40	41	45	36	25	31	35				37.6	2400	
WASH GAS LIGHT	34	34	29	33	21	21	28	21	21	29	22	21	21	20	22	14	15	23	19	29	25	35	29	26	21	20	23	27				24.4	EST	
SOUTH BOWIE	36	46	48	50	37	37	37	33	42	36	36	36	37	40	33	23	26	40	47	47	47	36	41	48	38	27	34	39				38.5	2400	
HUDELSON	33	34	27	36	24	22	28	14	12	24	23	22	22	14	23	15	19	24	20	30	28	34	29	24	23	22	24	28				24.2	EST	
OXON HILL	40	51	51	53	40	38	38	38	45	36	41	39	41	43	35	24	28	43	46	52	47	40	43	53	42	28	33	40				41.0	2000	
SMITH	34	36	29	36	28	24	28	20	16	32	25	33	23	19	24	14	18	24	23	32	32	35	35	26	28	22	25	28				26.8	EST	
HOLLYWOOD	39	48	49	60	40	36	36	36	44	35	40	42	44	42	37	27	28	41	45	49	46	44	60	59	38	29	33	37				41.6	2359	
ABELL	34	33	29	31	24	21	28	17	14	31	24	21	17	19	26	18	22	25	26	33	34	36	38	25	29	25	26	29				26.3	EST	
ORAVILLE																																		2400
VAN WIE																																		EST
RIDGE	38	46	51	60	43	36	36	36	43	36	43	45	46	39	39	33	35	37	43	47	44	55	61	60	39	31	35	35				42.6	2400	
ZYLA	35	34	31	31	28	27	26	20	19	29	29	28	22	22	22	18	26	25	26	34	34	34	33	26	29	26	28	30				27.6	EST	
HAGERSTOWN 1E	38	44	44	44	32	34	37	29	39	37	31	36	30	39	35	18	25	36	40	46	42	37	39	40	33	24	26	33				35.3	2400	
KEEFER	31	27	24	31	18	16	26	14	12	29	17	20	20	22	18	11	14	22	24	25	18	34	28	24	14	12	21	24				21.3	EST	
SMITHSBURG 2 NE	35	41	49	48	31	35	39	26	38	35	34	35	28	41	36	13	23	37	46	47	48	45	46	38	30	30	27	43				36.6	2000	
VAUGHN	31	30	26	30	19	18	25	13	14	28	13	22	16	18	13	9	12	21	24	27	24	34	23	21	11	14	20	23				20.7	EST	
SALISBURY	40	45	51	59	39	37	32	33	43	36	39	42	38	43	38	35	38	36	46	46	49	62	63	54	38	30	35	36				42.3	2400	
NWS WICOMICO CO APT	35	31	26	25	18	16	26	18	13	30	24	15	13	12	26	20	29	26	23	26	30	38	34	21	29	27	28	32				24.7	EST	
HANOVER 2 S, PA	36	41	46	44	32	32	35	25	36	33	27	34	27	36	32	17	21	36	39	40	41	36	39	38	32	24	28	35				33.6	2100	
RICKELL	32	23	20	32	16	12	21	12	9	24	10	14	14	11	17	8	8	19	27	25	16	32	27	19	12	8	18	23				18.2	EST	
WASH NATIONAL	41	50	48	54	38	37	38	34	42	39	41	39	39	41	35	25	27	40	44	46	42	41	43	51	40	28	32	37				39.7	2400	
NWS ASOS	34	37	31	37	26	27	29	22	20	33	25	29	24	23	25	15	18	25	26	33	31	35	33	28	29	22	25	30				27.6	EST	
WASH DULLES	39	49	47	51	36	36	37	33	41	37	39	38	38	40	33	22	24	39	42	46	41	38	41	47	37	26	27	37				37.9	2400	
NWS ASOS	32	31	25	34	21	20	28	10	7	29	21	25	21	17	22	13	14	23	15	25	24	35	31	21	22	21	23	26				22.7	EST	

**ACON MD / DE / DC
FEBRUARY 2003 DAILY PRECIPITATION**

STATION	1	2	3	4	5	6	7	8	9	10	11	12	13	14	15	16	17	18	19	20	21	22	23	24	25	26	27	28	29	30	31	TOTAL	OBS TIME	
WILMINGTON 4NNE CANAVAN	0.48			0.30			0.40			0.05		T			T	T	0.50	T				2.15	0.20			0.06	T	0.15			4.29	2400		
	(SOME DATES AND AMOUNTS OF SNOWFALL MISSING. MONTHLY TOTAL TAKEN FROM DATA SUBMITTED.)																																	
																16.0											0.5		2.5			33.7	EST	
BEAR 2 SW, DE GALLAHER	0.19			0.40		0.12	0.34			0.11	0.01	T			0.20	1.93	0.61	0.06			0.23	2.13	0.18	T		0.04	0.09	0.16			6.80	2400		
						1.3	5.4			0.6	0.1	T			2.2	22.0	2.3	1.1									0.9	1.3	2.3			39.5	EST	
WILMINGTON , DE NWS NEW CASTLE CO APT	0.20			0.36		0.08	0.40			0.09	0.01	T			0.07	0.95	0.39	0.02			0.26	2.15	0.17	T		T	0.04	0.06			5.25	2400		
						0.8	6.0			0.5	0.1	T			2.0	17.0	3.0	0.2									T	0.7	1.3			31.6	EST	
U of D DE Climatologist Newark Pearson Hall	0.16			0.28		0.08	0.60		0.06	0.05					0.13	0.88	0.65	0.07	0.01		0.25	1.42	0.21					0.07			4.92	2400		
																																	4.92	EST
GEORGETOWN, DE NWS SUSSEX CO APT	0.53			0.49			0.38			0.16		T		T	0.41	0.45	0.66	0.02			0.30	1.03	0.48			0.03	0.26	0.10			5.30	2400		
																																	5.30	EST
GEORGETOWN, DE UoD RESEARCH & ED CTR	0.54			0.45			0.12	0.02		0.15		0.01			0.49		0.95	0.02			0.29	0.80	0.42				0.13	0.34			4.73	2400		
							4.0			0.3					1.0	15.0	1.0	0.5								0.5	0.5	0.1	1.0			23.9	EST	
HARBESON, DE UoD WARRINGTON FARM	0.43			0.30			0.09	0.03	0.23	0.17					0.41	0.09	1.12				0.26	0.84	0.12				0.15	0.23			4.47	2400		
																																	4.47	EST
FROSTBURG LATTA	0.04	T		0.13	0.11		0.14	0.01		T	0.21	0.07		T	0.20	0.73	2.17	0.22		0.04		0.69	0.55	0.01	0.07	0.02	0.13	0.13			5.67	0700		
	0.3	T			0.9		1.9	0.8		0.1	4.2	1.2		T	2.3	6.1	18.7	2.5		T						T	0.5	0.5	1.1	1.2			42.3	EST
LAVALE MULLINS	T			0.13	T	0.01	0.17	0.01		0.10	0.10	T			0.32	1.77	0.78	T	T		0.32	0.66	0.14	0.05		0.12	0.13	0.04			4.85	2400		
	T			T	0.2	0.1	2.0	0.2		1.0	1.0	T			2.5	18.0	7.5	T			T		T	0.5		1.5	1.5	0.5			36.5	EST		
ST MARGARETS BRYANT	0.16			0.19		0.03	0.63			0.10					0.35	1.37	0.94	0.10			0.27	2.27	0.14			0.14	0.19	0.18			7.06	0700		
						0.3	6.0			0.7					1.6	17.5	0.7	0.9								1.8	2.0	2.0			33.5	EST		
MILLERSVILLE 1SE HANSON	0.12			0.24		0.23	0.34			0.07	0.01				0.23	2.01	0.43	0.05				0.38	3.02	0.09		0.14	0.18	0.02			7.56	2400		
						2.5	5.0			1.0	0.3				2.3	18.0	2.0	1.0								1.5	2.3	0.7			36.6	EST		
LOTHIAN JUG BAY	0.14	T		0.12	0.21		0.68			0.10						1.17	1.55	0.14	T			0.94	1.46			0.04	0.12	0.31			6.98	0900		
							7.0			1.0						6.5	6.3	0.8								0.5					22.0	EST		
BWI NWS ASOS	0.08			0.26		0.23	0.34			0.07	T	T		T	0.23	2.01	0.43	0.06	T		0.29	2.30	0.06	T		0.14	0.18	0.02			6.70	2400		
						2.3	5.0			0.5	T	T		T	2.4	21.8	2.6	1.4								T	1.8	2.0	0.7			40.5	EST	
LAUREL 2 E STOUDT	0.15			0.26		0.25	0.47			0.10	0.03			T	0.37	2.03	0.54	0.07			0.37	2.68				0.15		0.19			7.66	2400		
						2.7	4.7			0.5	0.5				3.1	18.5	2.6	1.1								1.5		2.5			37.7	EST		
PARKTON 5SW KREINIK	0.14			0.30		0.06	0.51			0.05	0.02	T			0.22	1.40	1.05	0.06	T		0.20	1.71	0.05			0.14	0.09	0.10			6.10	2200		
						0.8	5.2			0.5	0.6	T			2.5	16.5	6.8	1.2								1.8	1.1	1.1			38.1	EST		
OWINGS MILLS 2SE SHARROW	0.14			0.29		0.10	0.46	T		0.07	0.02	0.01		T	0.19	1.72	0.69	0.06	T		0.32	1.71	0.27	T		0.18	0.06	0.09			6.38	2400		
						1.8	5.2	T		0.6	0.4	0.1		T	2.2	24.0	4.2	1.0								2.1	1.6	1.5			44.7	EST		
BALTIMORE 2SE MANFRE	0.17			0.31		0.07	0.55			0.09	T	T			0.26	2.20	0.45	0.08	0.02		0.33	2.23	0.13	T		0.15	0.28	0.12			7.44	1800		
						0.8	6.5			1.5	T	T			2.5	20.0	3.5	1.0								1.5	3.0	1.5			41.8	EST		
BALT INNER HARBOR MD SCIENCE CENTER	0.14			0.29			0.45			0.08					0.23	2.00	0.40	0.56	0.23		0.33	2.10	0.19				0.15	0.22			7.37	2400		
																																-	EST	
MANCHESTER 1SW CLOSE	0.12			0.35		0.13	0.35	0.01		0.07	0.05	T			0.17	1.61	0.92	0.07	T		0.29	1.49	0.01	T		0.10	0.13	0.05			5.92	2300		
						1.2	4.6	0.2		0.5	1.2	T			2.1	18.5	4.0	1.5								T	2.1	1.5	0.5			37.9	EST	
WESTMINSTER 4 SSE HARTSOCK	0.21			0.33		>	0.52			0.03	0.01	0.03			0.20	0.98	0.77	0.07			0.27	1.64	0.12			0.15	0.06	0.12			5.51	2100		
						0.9	5.1			T	0.6	1.0			2.0	13.8	5.2	1.5								2.2	0.8	1.5			34.6	EST		
WESTMINSTER 5 SSE KLEIN				0.35		0.20	0.30			0.05	0.02	0.03			0.20	1.00	0.80	0.10			0.26	1.60	0.12			0.13	0.12	0.13			5.41	2200		
						2.0	4.0			0.5	0.5	0.5			2.0	18.0	4.0	1.5								2.5	1.0	1.5			38.0	EST		
MILLERS 4NE MILLER	0.12			0.36			0.43	T		0.04	0.03	0.01			0.21	0.85	1.35	0.08		T	0.19	1.59	0.05			0.10	T	0.18			5.59	1800		
							4.8	T		0.5	0.9	0.3			2.3	12.8	9.4	1.5								1.4	T	2.0			35.9	EST		
FREDERICK 4 N FARFAN	0.17			0.31	T	0.90	0.29			0.05	0.01	T		T	0.24	1.28	0.61	0.03	T		0.24	1.34	0.08			0.22	0.19	0.04			6.00	2400		
	T			T	1.2	3.7				T	0.3	0.2		T	2.4	15.5	3.9	0.5								2.9	2.2	0.7			33.5	EST		
EAGLE ROCK HARVEY		0.06		0.20	0.22		0.20	0.12	T	T	0.26	0.12			0.30	2.00	3.77	0.08	0.02	0.02		0.72	0.42	0.07	0.13	0.07	0.05	0.15			8.98	0800		
		1.0		4.0		3.0	3.0	T	T	T	3.0	3.0			4.0	20.0	29.0	1.0	0.5	1.0					1.0	2.0	2.0	1.0	1.0	2.0			81.5	EST
FALLSTON 2 NW ALBRIGHT	0.11			0.23		0.18	0.38			0.05	0.01	0.02			0.26	2.00	0.10	0.29	T		0.23	1.93	0.16	T		0.14	0.14	0.03			6.26	2400		
						1.8	4.3			0.5	0.3	T			2.0	16.0	1.0	3.0								3.0	2.0	0.5			34.3	EST		

ACON MD / DE / DC
FEBRUARY 2003 DAILY PRECIPITATION

STATION	1	2	3	4	5	6	7	8	9	10	11	12	13	14	15	16	17	18	19	20	21	22	23	24	25	26	27	28	29	30	31	TOTAL	OBS TIME
LAUREL JHU / APL GIANNOLA	0.16			0.32	T	0.24	0.35			0.08					0.33	2.07	0.58	0.07	T		0.39	2.63	0.19			0.12	0.22	0.07			7.82	2400	
					T	>	7.0			0.2					>	>	>	28.0	T							1.2	3.0	1.0			40.4	EST	
POTOMAC 4N COHEN	0.20			0.20		0.08	0.47	T		0.11	T				0.35	1.70	0.60	0.06	T		0.28	2.03	0.22			0.10	0.25	0.15			6.80	2100	
						1.0	5.3	T		0.2	T				2.5	16.5	2.0	0.7									1.1	4.6	0.7			34.6	EST
OLNEY 1 S GIANNOLA	0.18			0.21		>	0.58			0.06	T				0.43	>	2.87	0.07	T		>	2.14	0.29			0.12	>	0.34			7.29	2400	
						>	7.0			0.3	T				3.8	>	21.8	1.0					T			1.2	>	4.6			39.7	EST	
MONTOGMEY VILLAGE ROTH	0.19			0.26		0.21	0.27			0.04					0.47	2.31	0.66	0.07			0.28	1.87	0.13			0.13	0.26				7.15	2400	
						2.3	4.6								3.3	15.4	3.0	0.5									1.3	4.2				34.6	EST
GLENMONT 1NNE ROSSEN	0.16			0.26		0.25	0.31			0.06	0.02	T		T	0.38	2.59	0.53	0.05	T		0.30	2.43	0.22	T		0.12	0.29	0.06			8.03	2400	
						3.0	3.6			0.8	0.2	T		T	3.1	19.4	1.8	0.7						T		1.3	3.9	1.1			38.9	EST	
BETHESDA SCAFIDE	0.21			0.25			0.17	0.06	0.17	0.08	0.03				0.12	M	M	0.14	0.53	0.08	0.34	2.15	0.16			0.01	0.03	0.26			4.79	2400	
																																	EST
GAITHERSBURG 2WNW SHAW	0.17			0.25		0.26	0.31			0.05	T			T	0.39	1.93	0.61	0.03	T		0.26	1.85	0.11			0.09	0.28	0.03			6.62	2400	
						3.0	4.0			0.5	T			T	3.5	19.9	1.8	0.4									1.0	4.0	0.4			38.5	EST
FOREST GLEN TERRY	0.18			0.25		0.27	0.35			0.06	T			T	0.41	2.56	0.48	0.06	T		0.35	2.51	0.13			0.14	0.22	0.05			8.02	2400	
						3.0	3.5			0.8	0.1			T	2.2	16.1	1.9	0.7					T			1.4	2.7	0.8			33.2	EST	
ROCKVILLE 1NE WASH GAS LIGHT	0.04			T		0.26	0.23			T	T			T	0.41	>	>	>	>	>	1.87	1.70	0.20			0.10	0.29	T			5.10	2400	
						3.5	3.0				1.5			T		16.0	7.0	0.5								1.0	4.0				36.5	EST	
SOUTH BOWIE HUDELSON	0.12			0.29		0.20	0.37			0.11				0.01	0.43	2.16	0.43	0.06			0.43	2.25				0.14	0.25	0.06			7.31	2400	
						2.3	4.3			0.1					1.5	14.0	1.3	0.8								1.6	3.0	0.6			29.3	EST	
OXON HILL SMITH	0.07			0.26		0.28	0.43			0.07				0.04	0.50	2.13	0.47	0.06	T		0.38	2.25	0.09			0.15	0.12	0.26			7.56	2000	
						3.0	3.8			0.2					0.8	13.2	2.5	0.8								2.2	1.3	2.9			30.7	EST	
HOLLYWOOD ABELL	0.13			0.37		0.38	0.40			0.13				0.05	0.66	1.52	T	0.01			0.36	1.35	0.08			0.31	0.52	0.10			6.37	2359	
						3.0	3.5			0.8					0.8	6.6	T	0.1								4.2	1.5	0.5			21.0	EST	
ORAVILLE VAN WIE																																	2400
																																	EST
RIDGE ZYLA	0.04					0.05	0.74	0.03		0.18				0.04	0.89	1.18	0.40	0.02		0.06	0.33	0.72	0.19			0.36	0.52	0.01			5.76	2400	
						0.5	4.1	0.4		0.6					3.0	2.1	0.4	0.4								4.7	0.5	T			16.7	EST	
HAGERSTOWN 1E KEEFER	0.13		T	0.33		0.09	0.21			0.01	0.03	T			0.19	1.58	0.94	0.03	T		0.18	1.02	0.13	T		0.11	0.15	0.02			5.15	2400	
	0.2					1.0	3.2			0.1	0.6	T			2.1	16.0	5.5	1.0	T					T		2.0	2.6	0.5			34.8	EST	
SMITHSBURG 2 NE VAUGHN	0.18		T	0.45	T	0.06	0.28	T		0.02	0.09				0.19	1.98	0.55	0.11	0.01		0.27	1.09	0.09			0.09	0.20	0.12			5.78	2000	
	0.9				T	0.7	3.2	0.1		0.3	1.0				2.1	18.0	5.0	1.2	0.1							1.1	2.2	1.4			37.3	EST	
SALISBURY NWS WICOMICO CO APT	0.35			0.26		T	0.45			0.25				0.01	0.68	0.33	1.92	0.04			0.29	0.87	0.11			0.25	0.40	0.03			6.24	2400	
						T	2.0			2.0					0.5	4.0		T								2.0	0.4	T			10.9	EST	
HANOVER 2 S, PA RICKELL			T	0.40	T	0.02	0.36			0.05	0.06	T			0.21	1.09	1.28	0.12	0.01		0.45	1.55	0.16	T		0.11	0.05	0.11			6.03	2100	
					T	0.5	4.5			0.5	1.0	T			2.8	14.0	7.0	2.5	T					T		1.5	1.0	2.0			37.3	EST	
WASH NATIONAL NWS ASOS	0.07			0.21		0.24	0.33			0.04	T			0.02	0.32	0.84	0.39	0.03	T		0.34	2.27	0.13			0.06	0.14	0.02			5.45	2400	
						2.8	3.8			0.1	T			T	0.3	13.3	2.7	0.4								1.7	3.1	0.5			28.7	EST	
WASH DULLES NWS ASOS	0.11			0.19		0.23	0.26			0.06	T			0.02	0.32	1.29	0.20	0.02			0.30	1.69	0.16			0.11	0.14	0.03			5.13	2400	
	T					2.6	3.5			T	T			T	4.2	15.9	1.6	0.7								1.9	4.1	0.4			34.9	EST	