



<http://www.jhuapl.edu/weather/education/ACONdata.html>

ATLANTIC COAST OBSERVER NETWORK, MD / DE / DC CHAPTER WITH DATA FROM NEARBY AREAS

RARE OCTOBER SNOW

October's temperatures and precipitation averaged close to normal. There was no extreme warmth or cold periods. Nor were there any tropical storms. The exceptions to the "calm" occurred around the 2nd, 13th, 19th, and 29th. Over an inch of precipitation fell at some locations. Thunderstorms occurred on the 13th and 19th. The northeaster of the 29th brought falling temperatures, rain, sleet and snow. The rain mixed with sleet and wet snow generally along and west of the I-95 corridor. The further west and north the heavier the wet snow was.

The month began unseasonably cool and wet. Maximum temperatures on the 2nd ranged from the mid 40's to lower 50's. **Greg Latta** of **Frostburg** reported 2.01" of rain on the 2nd & 3rd. **Dave Leshner** of **Davis 3 SE WV** reported 8.3" of snow. No snow was reported in Maryland by any ACON observers.

Pleasant, sunny, dry, warm days and cool nights with light winds occurred from the 5th to the 9th. Rain fell from the 12th to the 14th. There were some thunderstorms reported on the 13th. The heaviest rains fell in metropolitan Washington. **Richard Holden** of **Clarksburg 2 ENE** reported 2.49", **Rob Cohen** of **Potomac** 2.37", **Joe Terry** of **Forest Glen** 2.06" and **Stan Rossen** of **Glenmont 1 NNE** 2.03". The 14th to the 16th were sunny and windy. The 15th was the windiest day with gusts exceeding 40 MPH at windier locations.

Rain along with some thunderstorms occurred on the 19th. Rainfall totals generally ranged in the half to three quarters of an inch range. The heaviest fell in central Maryland where **Jim Vaughn** of **Smithsburg 3 NE** reported 1.39" and **Max Hutto** of **Smithsburg 1.5 SW** 1.38".

A early season northeaster brought a mixture of rain, sleet, and snow to the region. Over 5 inches of snow were reported by the following ACON observers: **Greg Latta** of **Frostburg** 9.8", **Dave Leshner** of **Davis 3 SE WV** 8.8", **Herb Close** of **Manchester 1 SW** 7.8", **Nate Mullins** of **LaVale** 7.0", **Jim Vaughn** of **Smithsburg 3 NE** 7.3", **Max Hutto** of **Smithsburg 1.5 SW** 6.3", and **Bobby**

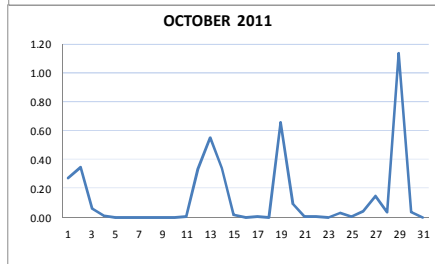
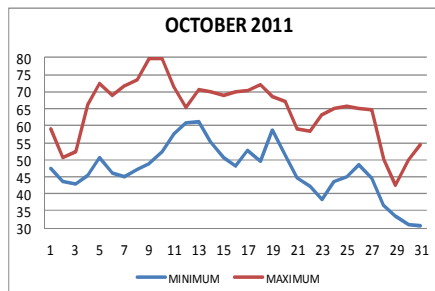
Miller of **Millers 4 NE** 6.1". **Herb Close** of **Manchester 1 SW** is writing a report on the storm which will be completed shortly.

The first freezing temperatures of the season occurred on the evening of the 29th and/or the 30th at a majority of ACON stations.

SUMMARY OF SNOW MEASUREMENT GUIDELINES

Many ACON observers do not have sites that match standard guidelines. Below are guidelines to use to obtain an accurate measurement. Always place the white snowboard on the ground or top of the snow if there is snow on the ground. Do not take measurements more frequently than at 6 hour intervals. Always clean the snowboard after each measurement. The bottom line is—Do the best you can and avoid procedures which can cause inaccurate measurements.

1. Avoid wind blown locations.
2. Use a white snowboard. Measuring over grass can inflate the total or decrease the total if the ground is warm.



ACON MD/DE Network
Daily average temperatures and precipitation based on observation times, not calendar days.

EXTREMES REPORTED BY

ACON OBSERVERS

MAXIMUM TEMPERATURE

Baltimore 2 SE	87
Forest Glen	85

MINIMUM TEMPERATURE

Smithsburg 1.5 SW	22
Hagerstown 1 E	25
Davis 3 SE WV	25

WARMEST AVG. TEMP.

Baltimore 2 SE	61.0
Hollywood 3 ENE	59.7

COLDEST AVG. TEMP.

Davis 3 SE WV	45.7
Frostburg	49.3
LaVale	51.9

MAXIMUM PRECIPITATION

Davis 3 SE WV	6.83
Clarksburg 2 ENE	6.44
Frostburg	6.12

MINIMUM PRECIPITATION

Hollywood 3 ENE	2.06
Harbeson 8 S DEOS DE	2.24

MAXIMUM SNOWFALL

Davis 3 SE WV	17.1
Frostburg	9.1

3. Install multiple snowboards and take an average if possible.
4. Locate the snowboard in an undisturbed area.
5. Minimum distance between the snowboard and structures, trees, etc. should be twice their height.
6. Avoid measuring snow on attached decks. Totals can be inflated as a result of air movements around the building.
7. Measurements can be made:
 - A.) Once a day at obs time.
 - B.) If more than one measurement is made between obs there must be a minimum of 6 hours between each measurement and the obs times. Sum the amounts to obtain the daily total.

8. Link to the NWS Guidelines: www.nws.noaa.gov/os/coop/snowguid.htm

Thanks to **Marty Brumback** of **Bryans Road 2 ESE** who reviewed the guideline summary.

OBSERVER COMMENTS FOR OCTOBER 2011

Gary Gallaher of Bear 2 SW, DE

5th - Crystal clear deep blue sky, nice breeze, warm.

29th - Rain with some PM sleet & wet snow.

31st - Heavy frost, morning fog and haze,

Nate Mullins of LaVale

Below normal temperatures for the first month since January.

1st & 2nd - Cold steady rain. Storm total 1.33". Record low maximum temperatures on the 1st (51°) & 2nd (44°).

17th - Very windy, brief shower.

29th - 7" of snow broke the old daily record of 1.0" set in 1962. It was the October's heaviest daily snowfall and set a record snowfall for the entire month of October.

29th - 35° maximum temperature broke the old record minimum maximum for October of 37° set 10/27/2001.

Jeff Stoudt of Laurel 2 E

Near normal temps and precipitation including a rare October snow. The month began and ended with very unusually chilly maximum temperatures which was accompanied by light to moderate rain, especially on the 2nd, 3rd, & 29th.

Ray Muller of Reisterstown

13th - Thunderstorm with heavy rain.

29th - Temperatures falling into the 30's with snow.

Marty Sharrow of Owings Mills

23rd - First frost, light, of the season.

29th - Alternating periods of wintry mix, rain and cold.

Joe Manfre of Baltimore 2SE

14th - Mild, rainy, t'stms from mid morning until about noon.

29th - Cold, rain until late PM.

Herb Close of Manchester 1 SW

29th - Record October snow of 7.8". The only other time it snowed in October was in 2009.

Ralph Hartsock of Westminster 4 SSE

13th - Heavy storms at night - Tornado watch.

29th - Heavy snow, sleet, and rain. Not as much snow as predicted but still a historic storm.

30th - Black ice everywhere in the morning.

Bobby Miller of Millers 4 NE

14th - Heavy mid day rain. Winds gusted to 46 from WSW.

24th - Heathkit Weather Computer 30 years old.

29th - Record October snow. Some sleet.

Marty Brumback of Bryans Road 2 ESE

29th - Rain/sleet mix ~1:30PM - 2:15PM. Rain/snow mix ~ 4:48PM - 5:30 PM. Rain ended ~ 8:15 PM

Eric Glass of Emmitsburg 2 SE

23rd - Low fog.

29th - Rain, snow, windy, colder.

Rich Giannola of JHU/APL Laurel

Maximum barometric pressure: 30.52 on 8th

Minimum barometric pressure: 29.28 on 19th & 20th

Rob Cohen of Potomac 4 N

13th - Three thunderstorms: 5 AM (close lightning), 6 PM & 9 PM (distant).

28th - Frost on windshield.

29th - Rain/sleet/snow mix AM; rain, then snow 1 - 5 PM.

Rich Giannola of Olney 1 S

28th & 29th - Rain began the evening of the 28th and

Rich Giannola of Olney 1 S (Cont.)

changed to snow ~ 6 AM on the 29th, then changing to a rain/snow mix in the morning, sometimes alternating between precipitation types. Rain changed to sleet at 12:30 PM. Snow began at 1:30 PM, continuing throughout afternoon into early evening before ending. This was the only measurable snow since records began in 1986.

Richard Holden of Clarksburg 2 ENE

29th - Moderate rain, light sleet, heavy snow. AM min 32°, Afternoon max 33°. 4" of snow was the second biggest October snowfall behind the 5 inches of snow that was recorded on October 10, 1979.

Stan Rossen of Glenmont 1 NNE

29th - Max of 40° tied 10/30/02 for the lowest max recorded here in 35° October's of record. Afternoon rain/sleet/snow mix. The snow melted on contact with all surfaces except the car. After dusk the precipitation changed back to light rain and that is how it ended.

Kevin Shaw of Gaithersburg 2 WNW

Daily record maximum precipitation records set on the 13th (1.32") & 29th (1.10"). First freezing temp on the 30th was 10 days later than normal.

29th - Second measurable October snow in 33 years. Max of 40° was the second coldest max temp for October in 33 years.

Joe Terry of Forest Glen

13th - Mild and damp. T'stms during the early evening with brief but very heavy rain and quite a bit of lightning.

19th - Dew point reached to the mid to upper 60's.

29th - First snow and ice pellets ever observed at this station in its 17 year history. Rain gradually changed to sleet then light snow during the early afternoon.

Brian Smith of Oxon Hill

29th - -RA 0000-1300; -RASN 1300-1700; -SN 1630-1700; -RAPL 1700-2000.

30th & 31st - Widespread heavy frost.

John Zyla of Ridge

2nd - Cloudy, cold, breezy, occasional rain. First fire of the season today.

29th - Heavy rain until evening then clearing.

Max Hutto of Smithsburg 1.5 SW

9th - Sunny, warmer, nice day.

29th - Overnight rain changed to snow by mid-AM.

Greg Keefer of Hagerstown 1 E

5th—9th - Bright 100% sunshine each day.

29th - 3.7" set a new October record for the most snow from a storm and for the entire month. The previous record was 2.8" on 10/30/1925. On 10/19/1940 1.3" fell and 0.1" fell on 10/10/1979.

Jim Vaughn of Smithsburg 2 NE

29th - Second coldest maximum temperature of 35° for the month. Record coldest maximum 35 set 10/30/2002. 7.8" of snow broke the old October daily record of 1.1 set 10/10/1979 and the month record of 1.2" set in 1979.

Dave Leshner of Davis 3 SE

3rd - Snow depth at obs time (7 AM) 5".

30th - Snow depth at obs time (7 AM) 6".

Compiled by Gary Gallaher, MD/DE ACON Data Collector and Report Writer, from data received from dedicated observers. Without your observations each month this report will not be possible.