



<http://www.jhuapl.edu/weather/education/ACONdata.html>

ATLANTIC COAST OBSERVER NETWORK, MD / DE / DC CHAPTER WITH DATA FROM NEARBY AREAS

MILD MONTH—WETTEST IN NORTHERN AREAS

November was a fairly quiet month. **Jeff Stoudt** of **Laurel 2 E** made the following comment in his monthly report: "Overall, this November was a great month for doing those outdoor late autumn chores and preparing for winter." **Kevin Shaw** of **Gaithersburg 2 WNW** said: "Really, overall a rather humdrum month that lacked extremes." **Joe Terry** of **Forest Glen** said: "Overall, rather boring for being a normally strong transitional month."

Precipitation was above normal in the northern areas and below normal in the central and southern areas. Almost all of the months rain fell during three events. These events all occurred in the second half of the month. East of the Western Maryland mountains no snow fell.

The first nine days were mostly sunny with maximum temperatures generally in the 50's and 60's along with a few 70's on the 8th. Minimum temperatures were generally in the 30's with a few 20's and a few 40's. Showers on the 10th brought only a tenth of an inch of rain.

The 11th was windy and colder. Maximum temperatures failed to rise out of the 40's. Temperatures rose into the 70's on the 14th. This was the warmest day of the month at many stations. Minimum temperatures on the 15th were in the mid 50's.

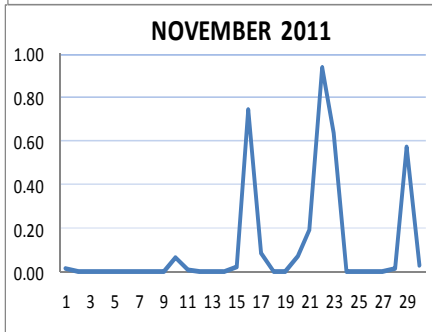
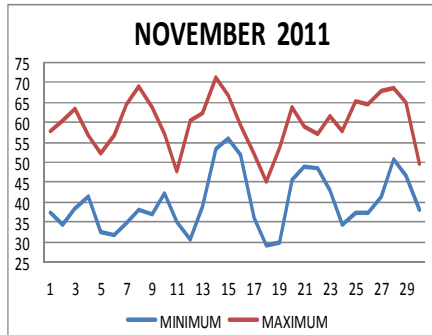
The first of three rain events during the last half of the month occurred on the 16th/17th. The heaviest amounts of one to two plus inches fell from east of Washington, D.C. into Sussex County Delaware. 2.34" fell at **DEOS Harbeson 8 SE, DE** and 2.33" at **DEOS Rehoboth Beach, DE**.

The coldest temperatures of the month followed this rain event. Sub freezing temperatures occurred on the 18th and 19th at all but the warmer locations.

The last ten days of the month were mild. Maximum temperatures were generally in the 60's along with some 70's on the 28th. Minimum temperatures were generally in the 30's and 40's. Rain fell from the 20th to 23rd and on the 29th.

The rain event from the 20th to the 23rd brought amounts of over an inch to areas from Washington D.C. northwards. Three inch plus amounts fell in Carroll and Frederick Counties. **Bobby Miller** of **Millers 4 NE** reported 3.59", **Herb Close** of **Manchester 1 SW** 3.55", **Ralph Hartsock** of **Westminster 4 SSE** 3.48", **Eric Glass** of **Emmitsburg 2 SE** 3.46", **Jim Vaughn** of **Smithsburg 3 NE** 3.29" and **Mac Hutto** of **Smithsburg 1.5 SW** 3.12". **Bobby Miller** of **Millers 4 NE** reported local streams and rivers in Carroll County were out of their banks the morning of the 23rd. Winds on the 23rd gusted to over 40 MPH.

Thanksgiving, the 24th, was sunny and mild with maximum temperatures generally in the mid 50's to lower 60's range.



ACON MD/DE Network
Daily average temperatures and precipitation based on observation times, not calendar days.

EXTREMES REPORTED BY ACON OBSERVERS

MAXIMUM TEMPERATURE

Lothian	77
Bryans Road 2 ESE	75
Glenmont 1 NNE	75
Forest Glen	75

MINIMUM TEMPERATURE

Davis 3 SE WV	15
Frostburg	22
Emmitsburg 2 SE	24

WARMEST AVG. TEMP.

Ridge	54.0
Hollywood 3 ENE	53.3
DEOS Rehoboth Bch DE	53.2

COLDEST AVG. TEMP.

Davis 3 SE WV	43.4
Frostburg	44.5
LaVale	46.1

MAXIMUM PRECIPITATION

Westminster 4 SSE	5.42
Millers 4 NE	5.23
Davis 3 SE WV	5.20

MINIMUM PRECIPITATION

Bethesda	2.08
Forest Glen	2.27
Laurel 2 E	2.34

MAXIMUM SNOWFALL

Davis 3 SE WV	7.1
Frostburg	0.4

Warm temperatures in the 60's with a few lower 70's occurred from the 25th to the 29th. The 29th was warm, windy, and wet. Over an inch of rain fell in New Castle County DE. **David Legates** of **Middletown 6 N DE** observed the greatest amount of 1.28".

The last day of the month was windy with temperatures falling into the 40's.

OBSERVER COMMENTS FOR NOVEMBER 2011

Gary Gallaher of Bear 2 SW, DE

Quiet, warm month, dry first half, wet second half. Daily average peak wind gust of 19.6 mph is the lowest in 22 years of wind records.

7th,9th,10th - Dense fog at sunrise

Greg Latta of Frostburg

23rd - Thunder occurred during the previous 24 hours ending at obs (7 AM) time.

Nate Mullins of LaVale

Second wettest fall on record with 17.01" of precipitation. The wettest fall is 1996 with 18.02".

15th - Record maximum minimum temperature of 53°. Old record was 52° in 1993.

Jeff Stoudt of Laurel 2 E

Mostly mild month. November became the first convincingly drier than average month since June.

10th - Periods of light rain mid afternoon thru dusk.

22nd - Periods of rain, mostly during daylight.

Marty Sharrow of Owings Mills

Temperatures as a whole about 3.0° above normal. Precipitation about 0.5" above normal.

2nd - Frosty start, then sunny, milder.

7th - Morning fog, then sunny and warmer.

17th - Overcast, breezy, much cooler.

Ralph Hartsock of Westminster 4 SSE

5th - Sunny, chilly. Some snow piles remain from the Oct 29 storm.

10th - Sunny, windy, colder.

22nd - Moderate to heavy rain.

23rd - Very heavy rain early, clearing late, flooding.

Bobby Miller of Millers 4 NE

1st - Clear, scattered afternoon cumulus. Snow on the ground in shade only.

8th & 9th - Clear, 100% sun, few evening cirrus.

23rd - Am heavy rain, thunder, local flooding.

25th - Scattered cirrus and contrails.

Eric Glass of Emmitsburg 2 SE

11th - Partly sunny, very windy and cool.

16th - Heavy drizzle

Rich Giannola of JHU/APL

Maximum barometric pressure 30.51" on the 6th

Minimum barometric pressure 29.61" on the 23rd

Rob Cohen of Potomac 4 N

17th - Afternoon temperature in the 40's.

27th - Record daily maximum temperature.

Rich Giannola of Olney 1 S

29th - Moderate rain during day especially in the afternoon.

Richard Holden of Clarksburg 2 ENE

16th - Heavy rain.

22nd / 23rd - Heavy rain.

Kevin Shaw of Gaithersburg 2 WNW

November was warmer and drier than normal. The mean temperature was my fifth warmest.

Precipitation records are now a full 33 year time period.

14th & 15th - Daily maximum minimum temperature set each day.

21st & 22nd - Fog, at times dense AM.

23rd - Very modest daily precipitation record of 0.53".

27th - Tied daily maximum temperature of 69°.

Joe Terry of Forest Glen

Above normal temperatures and below normal precipitation. Lots of warm 60 & 70 degree days but cold nights.

29th - Only brief sunshine late day and much colder. Apparent cold FROPA around 1020. Warm temperatures in the low to mid 60's up until FROPA then falling rapidly to around 50° by early afternoon.

Brian Smith of Oxon Hill

10th - -RA 1200 - 1900.

29th - -RA/+SHRA 0930 - 1530, 0.55".

John Zyla of Ridge

Lots of fog, but no snow or freezing temperatures yet this season.

8th - 11th - Peak fall colors.

19th - Most leaves are brown now.

23rd - Heavy rain from 5:10 - 6:15AM. Most of the leaves off the trees.

Max Hutto of Smithsburg 1.5 SW

8th - Sunny, warmer, breezy.

16th - AM fog, Rain overnight and throughout the day. Slightly cooler, breezy.

24th - Sunny, mild temperatures, breezy.

Greg Keefer of Hagerstown 1 E

Maximum barometric pressure 30.54" on the 6th

Minimum barometric pressure 29.60" on the 23rd

4th - Partly cloudy, NNE winds gusting to 32 MPH.

18th - Sunny, cold.

22nd - Rain all day. Rain was moderate to heavy at times.

23rd - Rain overnight. Mostly to partly cloudy and windy today with strong NW winds gusting to 40 MPH.

Jim Vaughn of Smithsburg 2 NE

Winds ≥40 mph on the 13th, 14th, 22nd, 23rd, 29th.

27th - 65 tied maximum temperature set in 2006. 45 minimum broke the previous daily record of 43 set in 2001.

28th - 56 minimum broke the previous daily record of 47 set in 2001.

Compiled by Gary Gallaher, MD/DE ACON Data Collector and Report Writer, from data received from dedicated observers. Without your observations each month this report will not be possible.

**ACON MD/DE/DC
NOVEMBER 2011 SUMMARY**

OBSERVER	STATION COUNTY, STATE	TEMPERATURE									PEAK WIND			PRECIPITATION					SNOWFALL				OBS TIME			
		AVG MAX	AVG MIN	MEAN	MAX	DAY	MIN	DAY	MAX >=90	MAX <=32	MIN <=32	GUST	DIR	DAY	TOTAL	MAX DAY	DATE	YEAR	DAYS >=.01"	DAYS >=1"	TOTAL	MAX DAY		DATE	SEA- SON	
<i>New Castle, Delaware</i>																										
Gallaher, Gary	Bear 2 SW	59.6	38.5	49.1	71	14	25	19	0	0	7	36	W	11	4.01	1.54	22	56.73	8	2	0.0	0.0		0.3	2400	
Legates, David	Middletown 6 N	60.3	39.5	49.9	72	8+	27	19	0	0	5	24		11	4.02	1.58	22	52.11	9	2					2400	
NWS Wilmington	New Castle Co. Apt.	59.8	39.3	49.6	74	8	28	6+	0	0	6	40	NW	11	4.13	1.64	22	52.14	9	2	0.0	0.0		0.3	2400	
U of D AG FARM DEOS***	Newark	59.3	39.1	49.2	71	8	25	19	0	0	5	23		11	4.29	1.49	22	45.72	7	2					2400	
U of D REC DEOS***	Townsend 4 W	59.7	40.3	50.0	73	28	29	6	0	0	5	30		29	3.52	1.27	22	56.64	8	2					2400	
<i>Sussex, Delaware</i>																										
NWS Georgetown	Sussex Co. Airport	62.7	41.7	52.2	73	14+	28	12	0	0	3	33	WSW	13	3.04	1.29	16	33.02	9	1					2400	
U of D REC DEOS***	Georgetown 5 SW	60.7	40.0	50.4	71	14+	27	12	0	0	7	27		23	3.05	1.37	16	37.11	11	1					2400	
U of D REC DEOS***	Harbeson 8 S	61.3	39.8	50.6	72	14	26	12+	0	0	6	25		13+	3.46	2.06	16	35.60	12	1					2400	
U of D DEOS***	Rehoboth Beach Bwk	59.9	46.4	53.2	73	14	33	18	0	0	0	32		5	3.76	1.88	16	33.02	10	1					2400	
<i>Allegany, Maryland</i>																										
Latta, Greg	Frostburg	54.0	35.0	44.5	72	15	22	18+	0	0	13				3.28	1.10	23	52.51	10	1	0.4	0.4	11	9.5	0700	
Mullins, Nate**	LaVale	56.6	35.5	46.1	74	14	25	12+	0	0	12				3.09	1.32	22	48.14	7	1	0.0	0.0		7.0	2400	
<i>Anne Arundel, Maryland</i>																										
Hanson, Dan	Pasadena 2 N	61.1	39.2	50.2	74	14	28	18	0	0	7	29	SSE	29	3.04	1.42	22	53.99	13	1	0.0	0.0		0.0	2400	
Jug Bay Wetlands	Lothian	62.6	38.9	50.8	76	14	26	18+	0	0	9				3.33	1.05	16	52.52	13	1	0.0	0.0		0.0	2400	
NWS Baltimore	BWI Airport	62.0	39.1	50.6	74	14	26	19	0	0	7	41	NW	23	2.45	1.17	22	52.02	9	1	0.0	0.0		T	2400	
Stoudt, Jeff	Laurel 2 E	60.9	40.5	50.7	73	14	29	18+	0	0	4				2.34	0.99	22	51.40	8	0	0.0	0.0		0.2	2400	
<i>Baltimore, Maryland</i>																										
Muller, Ray	Reisterstown	59.0	41.5	50.3	72	14	29	18	0	0	3				4.94	1.35	23	54.13	8	2	0.0	0.0		3.6	2100	
Sharrow, Marty	Owings Mills 2 SE	57.2	38.6	47.9	69	14	27	18+	0	0	6				3.88	1.53	22	52.60	7	1	0.0	0.0		1.1	2400	
<i>Baltimore City, Maryland</i>																										
Manfre, Joe	Baltimore 2 SE	STATION TEMPORARILY CLOSED NOV & DEC																				47.87			0.0	2400
Maryland Science Ctr	Baltimore Inner Harbor	63.1	46.4	54.8	77	14	36	18	0	0	0				3.09	1.73	22	49.67	7	1					2400	
<i>Carroll, Maryland</i>																										
Close Jr, Herb	Manchester 1 SW	57.6	39.4	48.5	70	8	25	18	0	0	7				5.14	1.57	23	58.23	8	2	0.0	0.0		7.8	2300	
Hartsock, Ralph	Westminster 4 SSE	56.7	39.1	47.9	68	28	27	19	0	0	10	36	WNW	11	5.42	1.60	23	51.32	7	3	0.0	0.0		2.2	1900	
Miller, Bobby	Millers 4 NE	58.3	39.2	48.8	71	8	26	18	0	0	6	41	NNW	23	5.23	1.88	23	59.76	8	2	0.0	0.0		6.1	1800	
<i>Charles, Maryland</i>																										
Brumback, Marty	Bryans Road 2 ESE	62.8	41.8	52.3	75	14	30	12	0	0	3	30	WNW	23	3.08	1.10	16	35.73	8	1	0.0	0.0		T	2359	
<i>Frederick, Maryland</i>																										
Glass, Eric	Emmitsburg 2 SE	57.5	35.2	46.4	68	9	24	19	0	0	15				4.90	2.79	23	58.23	9	1	0.0	0.0		3.0	0700	

**ACON MD / DE / DC
NOVEMBER 2011 DAILY TEMPERATURES**

STATION	1	2	3	4	5	6	7	8	9	10	11	12	13	14	15	16	17	18	19	20	21	22	23	24	25	26	27	28	29	30	AVG	OBS TIME
BEAR 2 SW, DE GALLAHER	59 36	60 31	63 34	58 40	53 30	56 28	62 32	70 37	63 34	60 44	49 37	58 29	61 37	71 55	67 55	53 38	45 28	54 25	63 44	57 49	53 49	62 41	58 33	63 35	63 33	66 35	70 44	64 47	51 41	59.6 38.5	2400 EDT/EST	
MIDDLETOWN 6 N LEGATES	59 37	61 32	64 37	58 41	52 33	58 29	64 34	72 37	63 36	59 44	50 39	59 30	62 41	72 54	67 56	57 53	53 46	46 55	57 64	56 54	54 49	62 49	59 61	65 35	61 34	67 37	71 48	66 47	51 41	60.3 39.5	2400 EDT/EST	
WILMINGTON , DE NWS NEW CASTLE CO APT	60 36	59 32	63 36	58 42	53 32	55 28	62 34	74 39	60 36	59 43	49 37	58 34	61 34	70 54	67 57	58 53	46 36	54 28	65 45	56 50	52 49	61 40	58 33	64 38	65 32	66 36	68 46	68 48	52 40	59.8 39.3	2400 EST	
NEWARK AG FARM, DE U OF DE DEOS	58 37	60 32	62 35	56 41	53 32	56 39	63 34	71 39	63 36	58 43	48 36	58 28	61 34	70 55	66 54	57 52	45 37	54 29	64 25	56 43	52 48	60 40	58 35	65 37	64 34	66 36	70 47	64 48	50 40	59.3 39.1	2400 EDT/EST	
TOWNSEND 4 W, DE U of D REC DEOS	57 37	60 31	63 38	56 41	51 32	57 29	63 33	70 37	65 35	57 43	48 36	59 30	62 47	71 54	67 56	58 52	44 32	55 33	63 49	55 48	55 48	63 41	56 35	64 39	66 35	68 39	73 54	66 47	50 40	59.7 40.3	2400 EDT/EST	
GEORGETOWN, DE NWS SUSSEX CO APT	60 37	61 34	64 37	56 39	53 34	58 37	65 35	70 36	70 37	62 45	50 36	61 28	66 43	73 59	70 58	68 56	56 37	46 29	58 30	66 50	63 54	64 53	67 46	57 37	66 37	64 36	70 44	73 58	72 48	52 42	62.7 41.7	2400 EST
GEORGETOWN, DE U of D REC DEOS	57 36	60 31	62 34	54 37	51 31	58 31	64 32	69 33	69 34	53 43	48 35	59 27	63 46	71 58	68 57	65 53	53 36	44 28	56 48	64 52	60 51	62 44	66 34	55 36	65 37	63 36	68 45	71 56	70 46	50 41	60.7 40.0	2400 EDT/EST
HARBESON 8 S, DE U of D REC DEOS	58 33	58 30	64 33	55 36	51 31	55 32	64 33	69 33	67 34	59 43	49 33	60 26	64 44	72 58	70 57	67 55	44 34	57 27	65 49	60 53	63 51	66 45	56 36	66 37	64 36	69 43	71 58	70 47	51 41	61.3 39.8	2400 EDT/EST	
REHOBOTH BEACH BWK U of D DEOS	57 53	54 45	62 44	54 47	50 44	54 47	61 45	61 44	58 44	58 44	49 39	62 35	64 49	73 59	70 58	65 55	46 36	59 33	66 35	58 52	61 54	67 54	57 46	68 46	63 46	69 51	61 57	63 49	51 42	59.9 46.4	2400 EDT/EST	
FROSTBURG LATTA	41 28	54 30	59 31	64 37	53 27	46 27	62 52	66 38	65 38	64 37	43 28	37 26	58 31	61 43	72 51	53 48	53 33	36 22	39 22	54 26	49 48	49 41	52 41	49 33	50 34	60 39	59 40	59 43	61 49	55 32	54.0 35.0	0700 EDT/EST
LAVALE MULLINS**	52 30	58 32	61 35	56 42	47 28	58 26	62 29	68 33	64 30	51 35	43 34	64 25	62 37	74 48	67 53	46 46	44 31	52 26	56 25	52 38	52 45	50 39	54 33	66 32	64 32	56 37	62 45	62 40	42 33	56.6 35.5	2400 EDT/EST	
PASADENA 2 N HANSON	60 37	62 32	64 37	57 45	51 30	58 29	66 34	71 36	61 44	59 44	49 39	62 29	64 38	74 56	68 57	52 52	46 28	55 30	68 48	59 48	58 44	62 40	60 31	61 33	65 33	69 39	68 46	67 47	51 39	61.1 39.2	2400 EDT/EST	
LOTHIAN JUG BAY	60 37	63 30	66 39	59 43	53 31	59 28	68 35	71 34	63 32	60 43	51 34	64 28	67 40	76 56	68 57	62 52	47 35	56 26	70 26	64 51	59 51	65 50	65 42	59 32	69 31	65 33	73 39	74 50	66 47	51 37	62.6 38.9	2400 EDT/EST
BALTIMORE NWS BWI APT	62 37	62 33	65 38	58 43	52 31	59 30	69 33	71 36	63 35	57 43	50 36	62 31	64 32	74 56	68 57	58 52	46 36	55 29	68 26	61 46	61 49	64 44	60 31	70 36	70 36	71 36	69 45	67 48	50 39	62.0 39.1	2400 EST	
LAUREL 2 E STOUDT	57 40	61 37	63 40	57 43	53 34	58 31	67 36	71 39	65 37	55 43	48 37	63 31	63 38	73 55	66 59	51 51	48 37	54 29	67 46	61 49	59 49	63 44	59 34	69 37	67 38	69 39	69 49	65 46	48 38	60.9 40.5	2400 EST	
REISTERSTOWN MULLER	58 39	60 38	61 43	54 44	53 33	56 32	65 38	68 47	62 39	52 42	42 36	61 32	59 35	72 54	65 57	59 50	49 37	56 29	63 46	57 47	53 47	61 43	60 35	70 43	63 46	68 46	62 45	62 45	49 40	59.0 41.5	2100 EDT/EST	
OWINGS MILLS 2SE SHARROW	55 39	60 33	61 37	54 43	49 32	54 28	65 34	66 39	60 36	53 41	45 34	58 30	58 35	69 50	64 56	56 51	49 35	42 27	51 27	61 42	56 45	53 45	60 43	55 32	63 39	62 36	64 39	64 47	63 46	46 36	57.2 38.6	2400 EDT/EST
BALTIMORE 2SE MANFRE																																2400 EDT/EST
BALT INNER HARBOR MD SCIENCE CENTER	61 48	62 44	66 46	59 47	56 41	59 40	64 45	70 47	62 46	60 48	50 42	64 37	66 44	77 56	70 62	62 57	49 41	59 36	70 52	62 49	59 52	64 50	62 48	72 40	69 47	72 45	69 55	69 52	52 44	63.1 46.4	2400 EST	
MANCHESTER 1SW CLOSE	57 38	62 40	62 39	53 38	50 29	54 32	66 40	70 47	63 43	50 39	45 33	60 34	68 37	69 49	54 52	47 47	48 32	25 25	28 28	44 44	44 44	58 38	31 42	62 46	62 42	64 42	67 51	62 45	45 32	57.6 39.4	2300 EDT/EST	
WESTMINSTER 4 SSE HARTSOCK	57 34	58 31	62 37	53 44	49 32	53 29	60 31	64 41	59 44	51 44	47 32	56 31	59 31	67 49	63 58	57 55	50 37	42 29	50 27	60 41	55 47	52 47	59 45	54 31	61 42	62 40	64 40	68 50	63 49	47 36	56.7 39.1	1900 EDT/EST
MILLERS 4NE MILLER	56 36	60 33	63 38	57 43	51 29	55 29	66 35	71 42	63 40	51 42	45 35	60 30	59 33	69 50	65 52	57 52	53 37	42 26	52 48	59 41	55 45	51 44	59 31	57 64	64 39	66 43	69 51	63 46	47 36	58.3 39.2	1800 EDT/EST	
BRYANS ROAD 2 ESE BRUMBACK	60 40	63 34	65 43	60 45	54 33	61 31	67 36	71 37	64 35	60 43	51 32	64 30	66 47	75 56	69 57	60 52	52 36	47 33	56 36	69 50	65 53	62 51	67 45	61 36	68 34	65 41	73 47	74 57	64 46	52 39	62.8 41.8	2359 EDT/EST
EMMITSBURG 2 SE GLASS	51 27	56 31	60 30	62 35	54 32	50 25	65 28	68 30	64 31	52 30	47 36	60 29	58 31	65 32	60 51	56 52	44 43	44 30	52 24	59 25	51 45	54 46	58 33	58 43	66 33	60 33	66 35	67 52	64 39	57.5 35.2	0700 EDT/EST	

**ACON MD / DE / DC
NOVEMBER 2011 DAILY TEMPERATURES**

STATION	1	2	3	4	5	6	7	8	9	10	11	12	13	14	15	16	17	18	19	20	21	22	23	24	25	26	27	28	29	30	AVG	OBS TIME	
LAUREL JHU / APL GIANNOLA	58 39	61 33	62 38	54 41	51 32	57 29	67 32	69 37	63 35	53 42	45 36	61 34	61 43	71 54	65 57	51 50	44 35	52 30	65 28	57 49	59 47	61 47	57 41	69 35	65 44	65 38	68 40	67 51	63 45	47 36	59.4 39.9	2400 EDT/EST	
NORBECK 1 SE BERGER	57 40	61 33	64 39	56 39	53 32	57 28	65 32	69 36	63 34	55 43	48 37	62 28	62 36	72 54	67 57	58 52	44 37	52 29	62 48	59 49	59 49	62 43	58 33	67 36	64 35	69 41	67 51	63 48	49 37	60.0 39.5	2200 EDT/EST		
POTOMAC 4N COHEN	59 37	63 32	65 38	58 44	55 33	61 30	66 34	69 36	64 40	54 44	48 37	62 29	61 34	74 52	68 57	58 52	52 38	45 29	53 29	64 44	60 49	57 49	61 44	59 33	65 32	63 34	69 39	69 50	64 48	48 37	60.5 39.5	2100 EDT/EST	
OLNEY 1 S GIANNOLA	59 38	63 35	64 41	57 45	53 32	57 30	67 35	70 39	64 37	53 42	47 34	63 30	61 40	72 53	67 56	57 51	52 35	45 27	53 31	63 48	57 47	59 48	62 42	59 32	68 36	66 38	68 42	68 50	63 47	47 37	60.1 39.9	2400 EDT/EST	
CLARKSBURG 2ENE HOLDEN	57 36	60 41	63 40	53 37	52 31	57 35	64 39	68 48	64 43	52 39	46 35	61 32	60 40	70 52	64 55	56 49	49 34	44 29	53 31	59 48	56 46	57 47	58 40	57 37	66 44	66 46	67 46	68 53	62 44	45 35	58.5 41.1	2400 EST	
MONTGOMERY VILLAGE ROTH 1SW																																	2400 EDT/EST
GLENMONT 1NNE ROSSEN														75																			2400 EST
BETHESDA SCAFIDE	58 40	60 35	61 41	56 41	51 33	56 32	63 37	66 39	62 38	57 40	47 32	62 31	62 40	73 53	64 56	58 50	50 35	44 29	53 32	66 48	60 49	62 49	62 39	58 34	67 36	66 39	70 44	69 52	63 44	48 37	59.8 40.0	2400 EDT/EST	
GAITHERSBURG 2WNW SHAW	58 37	60 33	63 38	55 39	52 32	56 29	63 33	67 36	62 34	53 42	47 34	61 29	62 34	72 53	66 57	58 51	46 36	54 30	62 44	56 48	57 48	58 43	59 34	66 33	65 33	69 40	70 50	63 46	48 37	59.3 38.8	2400 EDT/EST		
FOREST GLEN TERRY	62 39	64 34	66 41	61 39	56 33	61 31	69 36	72 37	67 36	57 41	51 33	65 29	65 38	75 54	66 57	59 51	49 35	56 30	68 48	63 49	61 49	63 43	62 33	72 35	69 36	72 44	73 51	64 47	50 38	63.0 40.0	2400 EDT/EST		
OXON HILL SMITH	59 40	61 36	64 40	58 46	51 35	59 33	66 38	68 38	63 37	57 46	48 36	62 31	64 43	73 55	66 57	60 52	53 38	46 33	55 33	67 49	64 50	62 50	64 48	61 35	68 35	65 38	71 46	71 52	65 45	50 37	61.4 41.7	2300 EDT/EST	
HOLLYWOOD 3 ENE GLEASON	60 43	60 41	63 45	57 48	55 41	58 39	68 41	66 40	62 42	62 47	51 38	63 34	65 50	74 57	67 54	67 40	54 35	48 36	56 49	66 55	63 54	63 47	68 42	60 39	62 41	64 48	70 50	69 49	63 42	51 42	61.8 44.8	2400 EDT/EST	
RIDGE ZYLA	59 46	59 42	64 46	56 48	55 41	58 43	67 45	68 46	62 46	63 46	51 37	64 36	64 50	74 57	70 57	67 53	53 37	46 33	57 40	67 51	63 54	63 54	70 46	58 40	64 45	65 47	70 51	69 57	62 48	51 41	62.0 46.0	2400 EDT/EST	
SMITHSBURG 1.5 SW HUTTO	56 29	61 28	66 33	54 41	52 28	56 25	65 28	69 32	65 30	57 37	45 35	63 32	62 30	68 53	65 53	57 49	49 34	43 28	53 26	62 45	54 46	51 46	55 39	58 32	64 33	63 31	66 33	67 58	64 45	45 35	58.5 36.5	2400 EDT/EST	
HAGERSTOWN 1E KEEFER	57 31	61 29	66 34	54 39	53 29	56 25	66 29	69 33	64 31	55 39	45 32	63 30	60 33	67 49	64 54	56 49	49 33	43 28	51 27	59 44	54 45	48 45	57 40	58 30	63 34	62 31	65 34	66 57	64 45	45 35	58.0 36.5	2400 EDT/EST	
SMITHSBURG 3 NE VAUGHN	55 33	60 34	66 39	54 37	51 30	56 38	64 35	69 38	66 45	57 37	44 32	61 32	61 41	67 51	66 54	57 49	50 31	43 26	51 33	61 45	57 44	56 44	57 38	57 37	62 41	62 41	65 45	68 56	63 41	45 33	58.4 39.3	2400 EDT/EST	
SALISBURY NWS WICOMICO CO APT	61 37	64 34	65 34	57 38	55 35	60 38	67 34	71 36	72 46	68 46	51 31	62 28	66 47	73 59	71 56	70 57	47 36	43 29	60 46	68 56	65 55	66 47	69 38	58 35	67 33	69 45	72 59	74 48	74 43	54 43	64.4 41.4	2400 EST	
WASH NATIONAL NWS ASOS	61 44	60 41	64 44	59 44	53 38	59 37	67 40	68 41	64 42	59 46	50 38	63 33	64 44	73 54	68 57	59 53	53 39	48 34	55 37	65 50	64 50	61 50	64 45	61 38	63 38	61 39	72 46	71 51	66 47	51 40	61.5 43.3	2400 EST	
WASH DULLES NWS ASOS	60 36	61 31	65 37	56 41	53 30	58 27	67 32	69 31	65 30	54 38	50 30	62 29	63 32	73 53	66 56	58 52	52 36	46 27	55 29	64 48	62 49	53 48	61 44	61 32	66 29	67 31	70 37	70 51	64 43	50 36	60.7 37.5	2400 EST	
STERLING 4 N SHAFFER																																	2400 EDT/EST
DAVIS 3 SE WV LESHER	42 26	50 26	61 33	63 40	51 24	48 25	62 37	61 35	67 39	68 44	46 21	36 22	52 36	57 42	64 45	52 44	51 27	27 15	42 15	52 38	50 48	51 48	54 45	45 28	43 29	54 36	52 42	61 46	58 51	51 25	52.4 34.4	0700 EDT/EST	

ACON MD / DE / DC
NOVEMBER 2011 DAILY PRECIPITATION

STATION	1	2	3	4	5	6	7	8	9	10	11	12	13	14	15	16	17	18	19	20	21	22	23	24	25	26	27	28	29	30	TOTAL	OBS TIME	
BEAR 2 SW, DE GALLAHER										0.08						0.64	0.01			0.07	0.16	1.54	0.32					T	1.19	T	4.01 0.0	2400 EDT/EST	
MIDDLETOWN 6 N LEGATES							0.01			0.08						0.59	0.02			0.07	0.23	1.58	0.16							1.28		4.02	2400 EDT/EST
WILMINGTON, DE NWS NEW CASTLE CO APT										0.08					T	0.62	0.01			0.10	0.12	1.64	0.48					0.03	1.05		4.13 0.0	2400 EST	
NEWARK AG FARM, DE U OF DE DEOS										0.08						0.69				0.12	0.16	1.49	0.64						1.11		4.29	2400 EDT/EST	
TOWNSEND 4 W, DE U of D REC DEOS										0.07						0.54	0.01			0.04	0.31	1.27	0.19						1.09		3.52	2400 EDT/EST	
GEORGETOWN, DE NWS SUSSEX CO APT	0.05									0.02						1.29	0.25			T	0.15	0.07	0.69					0.01	0.51		3.04 -	2400 EST	
GEORGETOWN, DE U of D REC DEOS	0.05							0.01		0.03	0.01					1.37	0.24			0.01	0.14	0.06	0.59						0.54		3.05	2400 EDT/EST	
HARBESON 8 S, DE U of D REC DEOS	0.05								0.01	0.02						2.06	0.28				0.20	0.07	0.41	0.11				0.03	0.11	0.11	3.46	2400 EDT/EST	
REHOBOTH BEACH BWK U of DE DEOS	0.05								0.01	0.04						1.88	0.35				0.17	0.05	0.73					0.06	0.42		3.76	2400 EDT/EST	
FROSTBURG LATTA	T									0.01	0.01	T			0.07	0.14	0.55				0.37	0.34	1.10	0.01				T	0.68		3.28 0.4	0700 EDT/EST	
LAVALE MULLINS**										0.03						0.11	0.59			0.43	T	1.32	0.11						0.50		3.09 0.0	2400 EDT/EST	
PASADENA 2N HANSON	0.03	0.01					0.01		0.01	0.10					0.01	0.41	0.03			0.06	0.18	1.42	0.16						0.61		3.04 0.0	2400 EDT/EST	
LOTHIAN JUG BAY	0.10		0.01				0.01		0.01	0.11					0.03	1.05	0.06				0.16	0.53	0.60			0.01			0.65		3.33 0.0	2400 EDT/EST	
BWI NWS ASOS	0.07									0.05					0.01	0.37	T			0.06	0.15	1.17	0.16						0.41		2.45 0.0	2400 EST	
LAUREL 2 E STOUDT										0.07					0.01	0.39	T			0.07	0.20	0.99	0.16						0.45		2.34 0.0	2400 EST	
REISTERSTOWN MULLER											0.09				T	0.97	0.05				0.32	1.33	1.35					0.41	0.42	T	4.94 0.0	2100 EDT/EST	
OWINGS MILLS 2SE SHARROW										0.07					T	0.55	T			0.04	0.28	1.53	0.86					T	0.55		3.88 0.0	2400 EDT/EST	
BALTIMORE 2SE MANFRE																																	2400 EDT/EST
BALT INNER HARBOR MD SCIENCE CENTER										0.05						0.31				0.04	0.16	1.73	0.38						0.42		3.09 -	2400 EST	
MANCHESTER 1SW CLOSE										0.09					T	0.90	T			0.27	0.31	1.40	1.57						0.58	0.02	5.14 0.0	2300 EDT/EST	
WESTMINSTER 4 SSE HARTSOCK										0.11						1.08	0.03			T	0.43	1.45	1.60						0.72		5.42 0.0	1900 EDT/EST	
MILLERS 4NE MILLER										0.11					T	0.75	0.13				0.47	1.24	1.88						0.62	0.03	5.23 0.0	1800 EDT/EST	
BRYANS ROAD 2 ESE BRUMBACK										0.09					0.06	1.10	0.06				0.13	0.50	0.56						0.58		3.08 0.0	2359 EDT/EST	
EMMITSBURG 2 SE GLASS											0.14				T	0.20	0.68				0.38	0.25	2.79	0.04					0.02	0.40	4.90 0.0	0630 EDT/EST	

ACON MD / DE / DC
NOVEMBER 2011 DAILY PRECIPITATION

STATION	1	2	3	4	5	6	7	8	9	10	11	12	13	14	15	16	17	18	19	20	21	22	23	24	25	26	27	28	29	30	TOTAL	OBS TIME
LAUREL JHU / APL GIANNOLA								0.08								0.40				0.08	0.16	0.98	0.31						0.44		2.45 0.0	2400 EDT/EST
NORBECK 1 SE BERGER										0.11					0.02	0.42				0.04	0.31	1.02	0.30						0.52		2.74 0.0	2200 EDT/EST
POTOMAC 4N COHEN										0.13					0.01	0.51	0.03			0.05	0.22	0.95	0.37						0.65		2.92 0.0	2100 EDT/EST
OLNEY 1 S GIANNOLA										0.11					0.01	0.46				0.03	>	1.29	0.34						0.62		2.86 0.0	2400 EDT/EST
CLARKSBURG 2ENE HOLDEN										0.11					0.01	0.83				0.07	0.24	1.13	0.66						0.61	0.01	3.67 0.0	2400 EST
MONTGOMERY VILLAGE ROTH 1SW																																2400 EDT/EST
GLENMONT 1NNE ROSSEN				T						0.09					0.01	0.39	T			0.09	0.17	0.84	0.24						0.52	T	2.35 0.0	2400 EST
BETHESDA SCAFIDE										0.10					0.13	0.27	0.01			0.13	0.11	0.76	0.18						0.37	0.02	2.08 -	2400 EDT/EST
GAITHERSBURG 2WNW SHAW										0.07					0.01	0.49				0.08	0.24	0.99	0.53						0.59		3.00 0.0	2400 EDT/EST
FOREST GLEN TERRY										0.10					0.02	0.38				0.07	0.17	0.73	0.29						0.51		2.27 0.0	2400 EDT/EST
OXON HILL SMITH										0.05					T	0.70	0.05			0.01	0.13	0.44	0.43						0.57		2.38 0.0	2300 EDT/EST
HOLLYWOOD 3 ENE GLEASON	0.04	0.01					0.01	0.01	0.02	0.02						1.09	0.21				0.05	0.35	0.44						0.41		2.66 0.0	2400 EDT/EST
RIDGE ZYLA	0.13			0.02						0.02						1.94	0.35				0.06	0.15	0.80						0.56		4.03 0.0	2400 EDT/EST
SMITHSBURG 1.5 SW HUTTO										0.16	0.01				0.12	0.99				0.34	0.22	1.62	0.94						0.58		4.98 0.0	2400 EDT/EST
HAGERSTOWN 1E KEEFER										0.14					0.10	0.84				0.31	0.18	1.32	0.74						0.50		4.13 0.0	2400 EDT/EST
SMITHSBURG 3 NE VAUGHN										0.08	0.02				0.08	0.84				0.45	0.28	1.64	0.92						0.68		4.99 0.0	2400 EDT/EST
SALISBURY NWS WICOMICO CO APT	0.10			0.01						0.03						0.55	0.28				0.08	0.02	0.64					0.01	0.59		2.31 0.0	2400 EST
WASH NATIONAL NWS ASOS										0.06					T	0.54	0.01			0.02	0.07	0.55	0.28						0.41		1.94 0.0	2400 EST
WASH DULLES NWS ASOS										0.07					0.05	0.34	T			0.01	0.21	0.70	0.30						0.50		2.18 0.0	2400 EST
STERLING 4 N SHAFFER																																2400 EDT/EST
DAVIS 3 SE WV LESHER										0.01	0.06 0.6	0.02 0.3			0.35	0.15	0.78 T	0.14 1.8		0.07	0.64	0.14	1.76 1.2	0.28				0.20	0.60 3.2	5.20 7.1	0700 EDT/EST	