



<http://www.jhuapl.edu/weather/education/ACONdata.html>

ATLANTIC COAST OBSERVER NETWORK, MD / DE / DC CHAPTER WITH DATA FROM NEARBY AREAS

PERSISTENT COLD WITH A MEMORABLE WINTER STORM EVENT

The first month of 2011 followed in the foot steps of the last month of 2010 i.e. temperatures persistently below normal along with sub-normal precipitation and above normal snowfall. No extreme heat or cold occurred this month. Much of the month's precipitation fell in the frozen form, i.e. snow, sleet, and freezing rain / drizzle. The storm of the 26th was the only notable event of the month. Winds speeds were below the average levels for a January.

The month began with a warming spell which began during the last few days of December. Any normal and above normal temperatures were welcomed after a cold December. Temperatures rose above 50° on the 1st and briefly on the 2nd. Other than a handful of stations where the temperature rose to 50° on the 18th or 19th maximum temperatures generally failed to rise above 40°.

There were two periods with temperatures consistently below 35 degrees. The first one occurred from the 8th to the 14th and the second one, which was the coldest of the month, from the 22nd to the 24th.

Other than the events of the 17th—19th and the 26th precipitation amounts were fairly light. Many stations reported at least of a trace snow on the ground on most of the days from the 7th to the end of the month.

New Years day was cloudy and mild with some light rain. Winds upwards to 30 mph ushered in colder weather late on the 2nd. Light snow totaling upwards of 2 inches fell on the 7th and the 8th. On the 11th upwards of 4 inches plus fell in the northern portions of Maryland and Delaware and 1 to 2 inches in the Baltimore and Washington area along with some sleet and freezing rain.

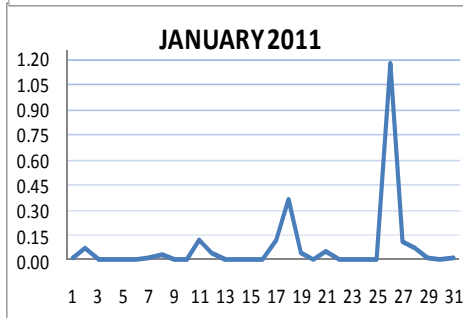
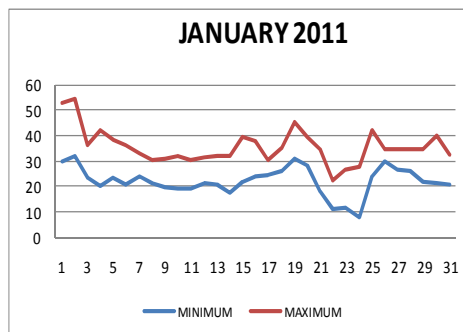
Precipitation on the 17th, which began as snow, changed to sleet and freezing rain and then rain on the 18th. The heaviest snowfall of 1 to 3 plus inches fell from Carroll County westward. The

heaviest liquid amounts fell east of the Chesapeake Bay where totals ranged upwards of one inch plus.

The coldest temperatures of the month occurred from the 22nd to the 24th. Maximum temperatures on the 22nd were generally in the 20 to 25 degree range. Single digit minimums were common on the 24th. The only zero or below temperatures in Maryland occurred at **Frostburg** and **Smithsburg 2 NE**.

A major storm occurred on the 26th. This storm came in two parts. The first portion's precipitation which began as snow, changed to sleet, freezing rain, and then to rain before ending. Snowfall amounts from this portion of the storm was around 1.5 inches or less. After a lull phase two began as rain which changed

Continued on page 4



ACON MD/DE Network

Daily average temperatures and precipitation based on observation times, not calendar days.

EXTREMES REPORTED BY ACON OBSERVERS

MAXIMUM TEMPERATURE

Baltimore 2 SE	61
Pasadena 2 N	59
Laurel 2 E	59

MINIMUM TEMPERATURE

Davis 3 SE WV	-4
Frostburg	-1
Smithsburg 2 NE	0
Millers 4 NE	1

WARMEST AVG. TEMP.

Ridge	33.2
Baltimore 2 SE	33.0
Hollywood 3 ENE	32.9

COLDEST AVG. TEMP.

Davis 3 SE WV	19.4
Frostburg	21.9
Manchester 1 SW	26.0
LaVale	26.3

MAXIMUM PRECIPITATION

Davis 3 SE WV	4.54
DEOS Harbeson 8 S DE	3.22
Bear 2 SW DE	3.05
DEOS Rehoboth Bwk DE	3.05

MINIMUM PRECIPITATION

LaVale	1.13
Smithsburg 1.5 SW	1.29
Frostburg	1.44

MAXIMUM SNOWFALL

Davis 3 SE WV	72.5
Frostburg	23.5
Millers 4 NE	22.9
Manchester 1 SW	20.6

MINIMUM SNOWFALL

Hollywood 3 ENE	1.2
Ridge	1.9

New station added: **Rehoboth DE Boardwalk**. It is a Delaware Environmental Observation System (DEOS) station. Data from any DEOS station can be found at www.deos.udel.edu

OBSERVER COMMENTS FOR JANUARY 2011

Gary Gallaher of Bear 2 SW, DE

Persistence cold with no extreme cold. Temperatures remained below 45° from the 3rd to the end of the month. Snow was on the ground for 24 of the last 25 days. Average daily peak wind gust of 20.6 mph was the lowest for January in 21 years of records.

26th - Thunder with heavy sleet. 10.3" of snow was the third greatest daily January snowfall in 44 years of records.

Greg Latta of Frostburg

Maximum snow depth 9". Snow on the ground from the 7th to the end of the month.

Nate Mullins of LaVale

The monthly high of 44 tied January 2003 for the lowest extreme max for any month.

8th - AM snow squall, then partly cloudy, WNW winds to 30.

26th - Daily record snowfall 7.0".

Jeff Stoudt of Laurel 2 E

11th - -SN/FZDL afternoon; -SN/SN evening.

17th - -PL/-FZRA began as -SN ~ 2000.

18th - -FZRA/-IP till dawn; -FZDZ later AM.

Marty Sharrow of Owings Mills

1st - Overcast and much milder.

3rd - Ineffective sunshine & colder; windy.

11th - Overcast with late day & night snow.

Joe Manfre of Baltimore 2SE

2nd - Cloudy, mild, a few rain showers, becoming windy and cold in the evening.

26th - AM light snow, then sleet, rain, and snow in evening with thunder.

31st - Partly cloudy, cold, few evening light snow showers.

Ralph Hartsock of Westminster 4 SSE

9th - Sunny, very cold, windy.

12th - Cold, drifting and blowing snow.

21st - Clearing, windy & colder. Blowing snow.

26th - Late blowing & drifting snow, thunder and lightning

Bobby Miller of Millers 4 NE

8th - AM band of heavy snow, and afternoon flurries.

18th - Snow to sleet. 1:20 AM 1/4" in glaze. Heavy evening fog visibility 1/8 mile.

26th - Evening thunder snow.

Ray Muller of Westminster City

18th - Freezing rain, freezing drizzle, light snow.

26th - Heavy snow 10.4" By evening visibility 1/16 mile in heavy snow.

Eric Glass of Emmitsburg 2 SE

13th - Light clouds, windy, cold.

Rob Cohen of Potomac 4 N

January turned out not as much a departure from normal as it felt (-2.9 deg), probably due to the closer to normal minimums and lack of above normal daytime maximums (5). This was the coldest Dec-Jan combo since 1994. Also, it was the snowiest January since 2000.

26th - Snow / sleet before dawn: 1.0". 3 - 4 PM heavy sleet to heavy snow, 1 to 2" per hour, distant lightning. 7.5" by 10:30 PM.

Rich Giannola of Olney 1 S

Barometer: Max 30.48" on 31st, Min 29.41" on 8th.

Richard Holden of Clarksburg 2 ENE

The 18.5" of snow was the most in January since 2000 when 26.6" fell. Sleet fell on the 11th, 17th, 18th & 26th. Glaze on the 18th & 19th. Thunder occurred on the 26th.

Stan Rossen of Glenmont 1 NNE

26th - Light snow began shortly before 3 AM and it became moderate for a time. By 5:00 AM the snow had tapered and a little bit of sleet was mixing in. Around 6 AM the sleet was the dominant form of prec. with the snow fading out and a little light rain was starting to mix in. All the frozen prec. was gone by 7 AM. The rain was quite light and tapered to a light drizzle not long thereafter. By 9 AM there was a very light mix of ice pellets and drizzle. The sleet was gone after 10 AM having added another 0.2" since the last measurement. In the meantime, the light drizzle tapered to a light mist after 11 AM that stopped for a while around 1 PM before resuming. The total prec. at this time was .35". The light mist became a light rain before sleet started mixing in before 3 PM. By 4 PM both the rain and the sleet was gone and only snow was falling again. It fell heavily for a time in the late afternoon before tapering and falling at a light to moderate rate well into the evening. It tapered to flurries after 10 PM and was gone by 11 PM. The temperature remained above freezing for the entire storm bottoming at 32.4° at 6:35 PM. This storm knocked out the power three times after dusk. Two outages were brief but the third one lasted 46½ hours.

Kevin Shaw of Gaithersburg 2 WNW

Snowfall was the 6th greatest for January and the greatest since 2000 when 23.9" fell. At least a trace of snow was on the ground from the 7th to the 31st except for the 25th. The minimum temperature failed to rise above 32°.

26th - Daily records set for precipitation and snowfall. Moderate to heavy snow mid afternoon into late evening with thunder-sleet and thunder-snow.

Joe Terry of Forest Glen

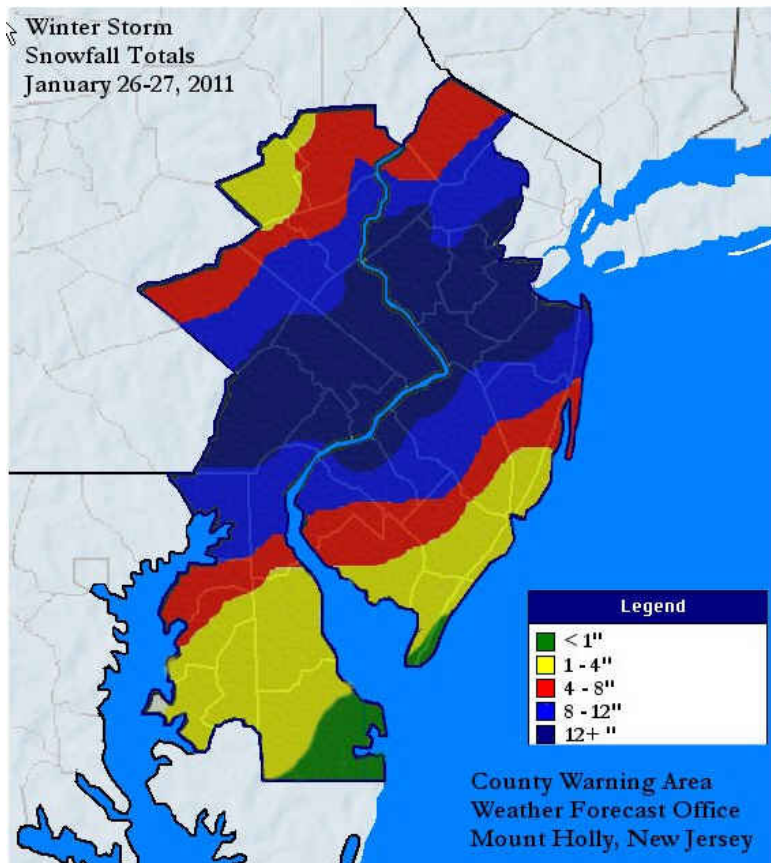
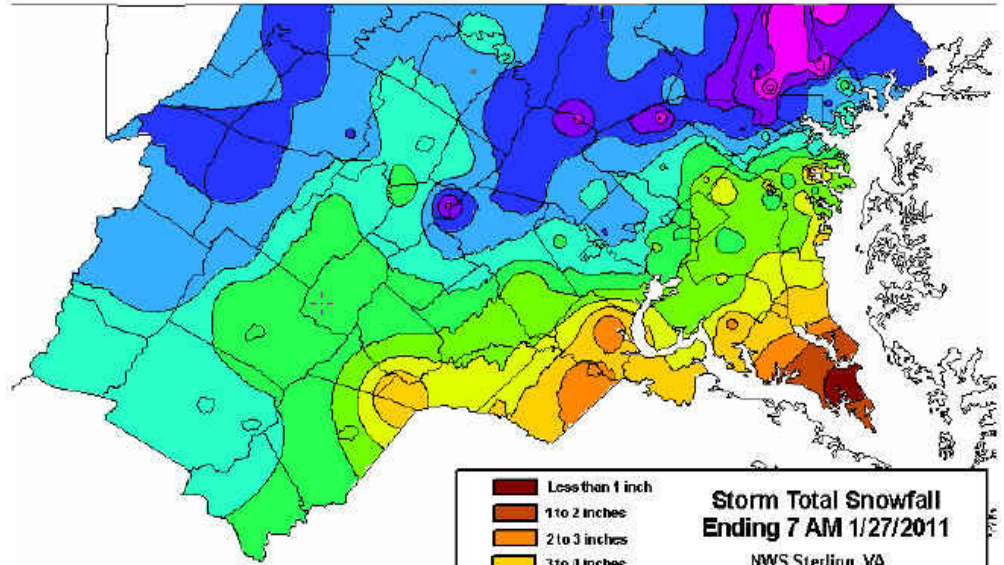
18th - Freezing rain from midnight to almost dawn resulted in 0.1" ice accumulation on all surfaces. Some transformer flashes evident due to ice buildup.

26th - Major snowstorm. A period of moderate snow and sleet early left about 1.5" on the ground then mixed with and changed to rain, ending by noon. Rain resumed at 1330, changed to sleet by 1530 and snow by 1600. Snow became moderate to heavy and ended by 2300. Another 7.2" of heavy, wet snow fell in these last 7 hours. Snow to liquid ratio was a very low 6:1. Thunder and lightning was observed a few times from 1745 to 1830. Power went out at 2015 (for 50 hours, 2nd longest in station history) as the snow's weight began breaking large tree limbs all over the neighborhood. Snow and tree damage made most side streets virtually impassable. Snow depth by the end of the day was 8".

[Continued on page 4](#)

Compiled by Gary Gallaher, MD/DE ACON Data Collector and Report Writer, from data received from dedicated observers. Without your observations each month this report will not be possible.

Maryland / Delaware / D.C. ACON January 2011

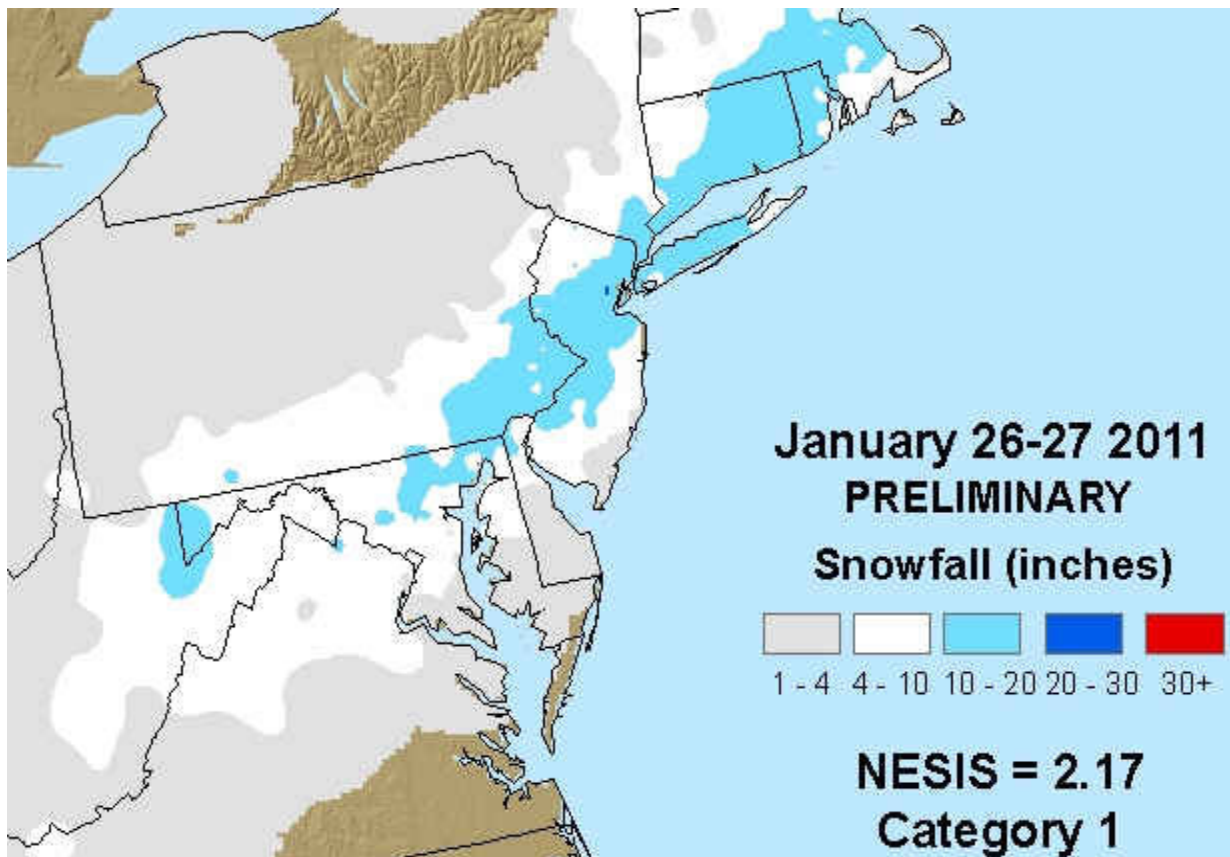


January 26/27 Snowfall Totals

Above: Sterling (Baltimore / Washington)
NWS Coverage Area Snowfall Map

Left: Mt Holly (Philadelphia) NWS Coverage
Area Snowfall Map

Maryland / Delaware / D.C. ACON January 2011



NORTHEAST SNOWFALL MAP OF THE JANUARY 26—27 STORM

Observer Notes Continued From Page 2

Brian Smith of Oxon Hill

26th - Mix 0200-0600, snowfall 0.4; -RADZ 0600-1400 w/few PL/SN; +TSRAPL 1539-1600; +SN 1600-2200; -SN 2200-2300. SD7, max depth 8".

John Zyla of Ridge

11th - Cloudy, sporadic freezing drizzle, snow at 9 PM.

26th - Rain 1:30 - 5:50 PM = 1.00", then snow 5:30 - Midnight = 1.6" (0.23").

Max Hutto of Smithsburg 1.5 SW

7th - Overnight snow, little temp change, breezy.

18th - Overnight freezing rain.

19th - Overnight freezing rain.

24th - Very cold AM, not quite as cold PM, partly cloudy, breezy.

Greg Keefer of Hagerstown 1 E

5th - Windy overnight west winds gusting to 34 MPH.

17th - Snow began this evening around 8:30 PM accumulating to 1.7" by midnight.

18th - Snow changed to sleet and freezing rain just after midnight tapered off to a freezing mist by dawn.

26th - Light snow fell this morning between 3 AM - 8 AM. Snow began again 2:30 PM and continued till 10 PM. Snow was moderate to heavy and a heavy wet snow. Some sleet was mixed in briefly. Water content from snow core sample 0.71".

Jim Vaughn of Smithsburg 2 NE

January 2011 will go down as being colder and drier than average with above average snowfall. It will also be know for one more thing, no daily, monthly, or yearly records were set. This is only the second such month in 58 years of records.

Report Continued From Page 1

to sleet and then heavy wet snow. Thunder-sleet and thunder-snow was common as the changeover moved northwards during the afternoon and early evening. The evening rush hour in Washington, D.C. and Baltimore areas was gridlocked. **Kevin Shaw of Gaithersburg 2 WNW** spent 6 plus hours driving home during the evening. **Bobby Miller of Millers 4 NE** trip, who left for home at 1 AM, took 3 hours. Snowfall amounts of seven to ten inches were common from Washington, D.C. northwards. The greatest amounts reported by an ACON observer was by **Marty Sharrow of Owings Mills** who measured 13.5 inches of snow and a liquid amount of 1.94". Power outages of upwards of 50 plus hours occurred in the Washington, D.C. area. **Joe Terry of Forest Glen** lost power for 50 hours and **Stan Rossen of Glenmont 1 NNE** lost power for 46½ hours.

Flurries occurred on the 29th. The month ended on the 31st with cold maximum temperatures which failed to rise above the 30° to 35° range along with some afternoon and evening snow flurries.