



<http://www.jhuapl.edu/weather/education/ACONdata.html>

ATLANTIC COAST OBSERVER NETWORK, MD / DE / DC CHAPTER WITH DATA FROM NEARBY AREAS

ANOTHER MONTH WITH WELL ABOVE NORMAL TEMPERATURES CAPPED OFF A WARM SPRING

May was the third consecutive month with above normal temperatures making it one of our warmest Springs. This Spring was the second warmest at NWS Washington National Airport and the fourth warmest at NWS Wilmington DE where records date both back over 100 years. Rainfall was below normal over much of the area except for a few locations outside Washington, DC and from Washington County westwards due to isolated heavy thunderstorms.

May began in the same manner as April, i.e. warm. Temperatures rose to the 80's at a majority of stations east of Carroll and Frederick Counties during the first 6 days of the month. Upper 80's and lower 90's occurred on the 1st. 92° was reported in **LaVale** on the 1st. Minimum temperatures failed to fall below 70° at many stations on either the 2nd and/or the 3rd. These were the warmest daily minimum temperatures of the month. Showers on the 2nd and 3rd brought 1.62" at **LaVale**, 1.32" at **Frostburg**, and 1.00" at **Smithsburg 1.5 SW**. East of Washington County amounts were generally less than 1/2 inch. No rain was reported in Southern Delaware.

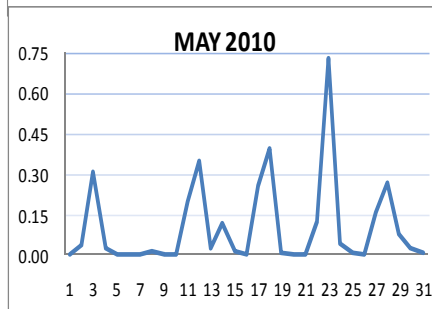
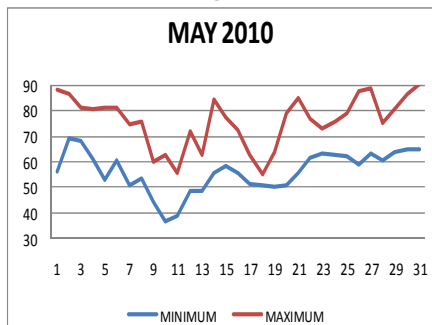
The coldest temperatures of the month occurred on the 10th and 11th. Freezing temperatures were reported at **Frostburg**, **Lothian**, **Manchester 1 SW**, **Millers 4 NE**, **Smithsburg 1.5 SW** and at **Davis 3 SW, WV**. Maximum temperatures on the 11th failed to rise above 60° across the region but at **LaVale** and **Manchester 1 SW** the temperature failed to rise out of the 40's. A cool rain fell on the 11th and 12th. Amounts ranged from 0.07" at **Ridge** to 1.09" at **Norbeck 1 SE** and **Clarksburg 2 ENE**.

Warm temperatures in the 80's returned briefly on the 14th. Scattered strong thunderstorms moved thru during the evening. Quarter size hail fell in Newark, DE, and 1/8" hail at **Millers 4 NE**. Hail was also reported at NWS Washington National Airport.

Seasonal temperatures returned from the 15th to the 17th. Maximum temperatures on the 18th were in the 50's. Much needed rains fell on the 17th and 18th. Amounts ranged from 1.47" at **Frostburg** to 0.27" at **Bethesda** and **Millers 4 NE**.

Temperatures in the 70's and 80's were common from the 20th till the end of the month except for the 26th, 27th, and Memorial Day the 31st when 90's occurred at some locations.

Scattered heavy thunderstorms on the 23rd dumped over two inches of rain at **Emmitsburg 2 SE** (2.60") and **Sterling 4 N, VA** (2.53"). Over 1" fell at many locations in the Washington DC Suburbs. A severe thunderstorm with quarter size hail stripped leaves and broke small branches from trees that occurred at **Frostburg** on the 28th.



ACON MD/DE Network

Daily average temperatures and precipitation based on observation times, not calendar days.

EXTREMES REPORTED BY

ACON OBSERVERS

MAXIMUM TEMPERATURE

Baltimore 2 SE	95
Westminster 4 SSE	95
Pasadena 2 N	94
Montgomery Village 1 SW	94
Forest Glen	94

MINIMUM TEMPERATURE

Frostburg	28
Davis 3 SE WV	28
Manchester 1 SW	31
Millers 4 NE	31

WARMEST AVG. TEMP.

Baltimore 2 SE	70.1
Ridge	69.0
Westminster 4 SSE	68.5

COLDEST AVG. TEMP.

Davis 3 SE WV	58.0
Frostburg	59.3
Manchester 1 SW	63.0

MAXIMUM PRECIPITATION

Frostburg	7.39
LaVale	5.90
Emmitsburg 2 SE	5.13

MINIMUM PRECIPITATION

Middletown 6 N DE	1.30
Bryans Road 2 ESE	1.68
Georgetown 5 SW DE	1.70

Observer Comments: Page 2
Floyd Abell Memorial: Pages 3 - 6

Don't forget the ACON Weather Gathering at the home of Herb Close of Manchester on Saturday, July 17th beginning at Noon.

OBSERVER COMMENTS FOR MAY 2010

Gary Gallaher of Bear 2 SW, DE

2nd warmest spring. Avg temp of 55.7° is 0.1° behind 1991.

10th & 11th - Light frost

14th - Severe thunderstorm with quarter size hail and blinding wind blown rain 5 miles north of here in Newark.

Greg Latta of Frostburg

28th - Quote from his web site "The most severe isolated thunderstorm I have observed in Frostburg occurred between 2 PM and 3 PM. I had quarter sized hail and winds that stripped the leaves from the trees and broke small branches. Most of today's 2.21" of precipitation came in form of thunderstorms."

Nate Mullins of LaVale

Spring tied 1991 for the warmest spring. May was the third warmest since 1948 due entirely to above normal minimum temperatures.

1st - Record high of 92°. Old record was 89 set in 2007.

2nd & 3rd - 1.62" of rain in 24 hours ending mid morning of the 3rd was more than fell during April.

11th - Very cool with steady cold rains. High of 45° tied May 6 & 7th 1958 for the coolest May maximum temperature.

27th - Severe thunderstorm 2:30 - 3:30 PM produced notable hail, intense frequent lightning, strong winds, and heavy rains.

Jeff Stoudt of Laurel 2 E

3rd - Gusty SHRA at daybreak. -RA till 0800.

Marty Sharrow of Owings Mills

10th - Patchy frost.

11th - Inc clouds then overcast, light rain & cold.

23rd - Overcast with periods of showery rain, humid.

31st - Hot & humid: sun with afternoon clouds.

Joe Manfre of Baltimore 2 SE

1st - Partly cloudy, hot, moderate humidity.

27th - Hot, humid, late PM thunderstorms.

28th - Early AM thunderstorms.

Herb Close of Manchester 1 SW

11th & 18th - Coldest max temperature for the month of 49°. April's coldest was also 49°, but it occurred only on one day.

Ralph Hartsock of Westminster 4 SSE

11th - Frosty early, becoming cloudy, afternoon rains.

27th - Hot & humid. Heavy overnight storms.

Bobby Miller of Millers 4 NE

8th - PWG 49 MPH @ 3:51 PM twigs & limbs down.

14th - Evening thunderstorm with 1/8" hail. PWG 38 mph N.

27th - Thunderstorms 10 PM to 2 AM 5/28. 1/8" hail 11:20 to 11:28 PM. PWG 37 SE.

Ray Muller of Westminster City

Dry month.

Eric Glass of Emmitsburg 2 SE

9th - Sunny, cool, and breezy.

Rob Cohen of Potomac 4 N

1st - Tied record max of 86°.

23rd - Thunderstorm 2:30 AM. 1.58" of rain today.

27th - Tied record maximum temperature of 90°.

Rich Giannola of JHU/APL

8th - Minimum barometric pressure for May of 29.51".

11th - Maximum barometric pressure for May of 30.42"

Rich Giannola of Olney 1 S

12th - SHRA/TSRA began ~ 5:00 PM. +TSRA 5:35 PM, Rain ended by 7:00 PM.

23rd - SHRA after midnight, ending before Noon. 1.00".

Richard Holden of Clarksburg 2 ENE

12th - Heavy rain.

Stan Rossen of Glenmont 1 NNE

2nd - Minimum temperature of 71° is the earliest 70 degree minimum temperature in 33 years of station record. Old earliest record was 5/24/2004.

Kevin Shaw of Gaithersburg 2 WNW

May tied 2007 for the second warmest May.

1st & 27th - Record daily max temp of 88° and 91°.

2nd - Record daily minimum temperature of 70°

5th - Sunny, warm day. Still pretty dry.

23rd - Record daily precipitation of 1.39".

25th - Cloudy, fog AM. Partly cloudy, warm, humid afternoon.

Joe Terry of Forest Glen

2nd - Very uncomfortable for early May, especially during evening. Dew points mostly in the low 70's.

27th - Impressive Tcu and Cb to the south and east late afternoon and early evening but no thunder observed and only a couple of very light showers.

Brian Smith of Oxon Hill

7th - 1847 perihelia and upper portions of halo.

14th - -TSRA 1850-1930, 0.04"; -TSRA 1958-2030. 1847 rainbow in sun shower.

John Zyla of Ridge

8th - Windy all day, constant 10 to 15 mph.

17th - Drizzle all day.

28th - Thunderstorm 12:30 - 2:00 AM.

Max Hutto of Smithsburg 1.5 SW

10th - Cold AM with frost.

27th - Mostly sunny, hot, humid, windy

Greg Keefer of Hagerstown 1 E

28th - Nearby intense thunderstorms to east around midnight produced high winds from East with gusts to 45 MPH but no rain fell here.

30th - Dense fog overnight and early this morning.

Lance Shaffer of Sterling 4 N VA

9th - Continued gusty winds, nice and cool, Fall like.

Dave Leshner of Davis 3 SE WV

9th - A few windblown snowflakes before daybreak.

Compiled by Gary Gallaher, MD/DE ACON Data Collector and Report Writer, from data received from dedicated observers. Without your observations each month this report will not be possible.

FRANCIS FLOYD ABELL

Floyd Abell, ACON weather observer from **Hollywood Maryland**, passed away on May 7, 2010. Well over 200 people attended his funeral mass on May 12th including ACON members Marty Brumback, Bobby Miller, John Zyla, Kevin Shaw and Gary Gallaher.

Below is the Eulogy presented by Marty Brumback sharing Kevin Shaw, Bob Ryan and Steve Steinke's remembrances of Floyd:

"I was so fortunate to have met Floyd back in the early 1980s through the Association of American Weather Observers. A local weather group, the Atlantic Coast Observer Network, or ACON, formed as a spinoff from the Association of American Weather Observers. Recruiting members for this new organization was relatively easy with observers like Floyd out there, eager to help get us off the ground and make major contributions to our publications and activities back in the pre-internet 1980s. Floyd added so much more besides his excellent data and reports from Hollywood. His humor, his wit, his poetry was so unique among us, and when we gathered he always commanded great respect and attention from all of us. We had frequent meetings, visits to weather stations, dinners, and much social interaction via postal correspondence and phone at first, then gradually through the internet and e-mail. Floyd embraced the new technology. His keen sense of what was right, and what was interesting and relevant to our great hobby was invaluable as our organization grew through the 1990s and into the current century. And he had "come on board" with technology that involved a new way of communication, and use of modern, wireless weather instrumentation. All of us in ACON, some 40 strong throughout Maryland and Delaware, have lost a great compatriot in weather and in life itself. May his great spirit live on forever."

Kevin Shaw, MD/DE ACON, Gaithersburg, MD

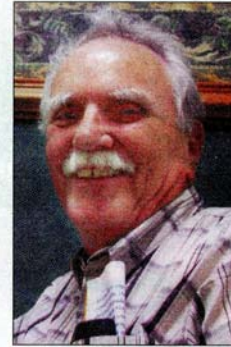
"We know Floyd was in failing health and his passing so soon after his loss of Stephanie was almost inevitable, much like the sunrises, sunsets, day to day changes in the sky he loved so much. Floyd may not have been the first person to respond to my on-air invitation to become a "Channel 4 Weather Watcher" but he sure was among the first few and the most loyal and accurate observer of any volunteer weather network. Floyd and Stephanie came to every "Weather Watcher Picnic" at Channel 4 some 20 to 30 years ago before budget cuts. He was a stone cutter by trade but a meteorologist in his heart. Everyone in St. Mary's County knows about Floyd's Weather Station, his reliable re-

Continued on page 4

Weather watcher Abell dies

Floyd Abell of Hollywood, St. Mary's most renowned weather watcher, died Friday, May 7. He was 67.

See Page A-10 for his obituary and Page A-11 for a story about his life.



Wednesday, May 12, 2010 The Enterprise Page A-11

Abell, weather watcher, dies

■ Kept temperature, precipitation records for 30 years

By JASON BABCOCK
Staff writer

St. Mary's County lost its local weatherman when Francis Floyd Abell, 67, died on Friday, May 7. He leaves behind 30 years of daily weather records from his location in Hollywood in the Winterseat neighborhood.

A family member left a final message on his telephone weather line that said he had "gone to the big weather station in the sky and we're going to miss him."

Stephanie Abell, his wife of 46 years, died on March 1.

"It was more mourning for her than anything," said JoAllen Mattingly, Floyd Abell's sister-in-law, said of his death. On Friday at St. Mary's Hospital, Mattingly reported, "He said, 'I want to go home and see her. I want to go home and see her now.' He was adamant — he was going."

She said she can imagine Stephanie Abell telling Floyd, "What are you doing up here already?"

Bob Ryan, former chief meteorologist for WRC-TV, said in an e-mail to weather observers and other professionals, "Floyd may not have been the first person to respond to my on-air invitation to become a 'Channel 4 Weather Watcher,' but he was among the first few and the most loyal and accurate observers of any volunteer weather network.

"He was a stone cutter by trade but a meteorologist in his heart. Everyone in St. Mary's County knows about Floyd's Weather Station, his reliable reports and yard of whirligigs. Floyd was a decent, honest, lovely man who loved his wife, his friends and, of course, the weather. I'll miss his calls and reports, but know he is still watching," Ryan said.

Channel 4 meteorologist Veronica Johnson mentioned Floyd Abell's death during the 11 p.m. broadcast Friday. "He performed a great service over the years," she said.

Abell first starting making daily weather observations in Hollywood in 1980.

Now the National Weather Service office of climatology is requesting Abell's records to include in its archives, said Marty Brumback, Abell's friend of 25 years.

"Floyd was a stickler for accuracy," he said, "and that's why the weather service so heavily counted on him" for local storm reports.

"I never called his weather line; I just went directly to the source," Mattingly said.

Abell started his daily weather telephone line in November 1983. When severe weather struck, he would get up to 2,000 calls a day on it.

"You know, I did not realize how many lives he has touched, and how many people really depended on him and his weather," Mattingly said.

Besides his immense collection of weather data, Abell also leaves behind a sizable thermometer collection. "The weather was his passion," Mattingly said.

Abell was somewhat of a local celebrity, said John Zyla, who has been keeping weather records in Ridge for 15 years. Abell got him set up to record weather so he could compare weather information with another St. Mary's County location.

"A lot of people know of Floyd Abell, but don't know him personally," Zyla said.

"I didn't realize how famous he really is because he's a friend of mine," Zyla said. "He was always polite, very genteel. He always made you feel like you were important when you talked."

Speaking to a class at St. John's School in Hollywood in 2001, Abell told the students the weather affects life every day.

"Today you know it's warm so you dress lightly. And even on the wedding day, the question is not, 'Do you love me?' It's, 'What's the weather going to be?'" he said.

Born in St. Mary's County on Jan. 18, 1943, Abell was drafted into the military when he was 26 to go to Vietnam. He served as a combat engineer in the Army from 1969 to 1970.

"It's a terrible thing, the Vietnam conflict, all those boys killed. We had mortar fire coming into the camps. I was fortunate I got outta there," he said in a 2004 interview.

After the war, he got a job at Capitol Hill where he worked as a mason until his retirement.

jbabcock@somdnews.com

Newspaper article from "The Enterprise", St Mary's County
© Southern Maryland Newspapers

FRANCIS FLOYD ABELL

Continued from page 3

ports and yard of whirligigs. Floyd was a decent honest lovely man who loved his wife his friends and of course the weather. I'll miss his calls and reports but know he is still watching. He enriched all our lives." 5/11/2010 Bob Ryan Continues "When anyone is driving around St. Mary's County and sees a whirligig gently moving in the breeze in someone's yard. . .think of it as the spirit of Floyd and Stephanie now part of the wind and weather."
Bob Ryan, WRC TV Channel 4, Washington, D.C.

"40 years ago I didn't know Floyd Abell. I knew I loved watching the weather. Growing up in Midwest farm country, I knew just the right country roads where I could drive, stop the car, and get out to view an approaching storm. I could take it all in. I could sense the wind and the smell of rain. And I could watch the clouds unfold in ways that spoke to me. Back then, it spoke to me and me alone. And I often wondered if there was another like me who felt the same way about the weather, and that's when I learned of Floyd Abell. Floyd had already established himself as a meticulous observer who was always most concerned about getting it right, not exaggerating the truth. When his rainfall came up short of others, he was fine with that. When he measured snow, he needed his measurements to be as accurate as it they could be. Floyd needed it "real," and he was dedicated to keeping it that way. Floyd brought to the AAWO his passion for the sky, a wonderful smile, and his ever-present gift of humor and poetry. These days when I look up to the sky I see it just as I did 40 years ago. I never get tired of it. With Floyd's help I learned more about the sky. With Floyd's help, I learned a lot about myself. Floyd gave us his perspective in ways unique to this delightful man. Those of you here today know exactly what his gift was. And when we look up each day, we know that he is looking down in appreciation of our commitment to the sky and to each other. We know, too, that Floyd's gift to us is not past tense. It is as alive today as it has ever been. In Floyd's passing we will all celebrate that gift he wants us to enjoy. I thank Floyd for answering my personal question about if there were others equally as passionate about the weather. Indeed there are many others just like Floyd and me who love the sky, never grow tired of its changing moods, and are defined by the connection we have to it. Thanks for helping me learn that from you Floyd. And thanks for sharing that gift with so many who came to know you."
Steve Steinke, Phoenix, Arizona

Floyd was also a poet. Marty ended with a poem:

"A Great Poet"

Sometimes he didn't know it
And he certainly never boasted of it
But Floyd Abell was one great poet

In his own special way
He told of glistening winter days
And of evening's kaleidoscope rays

He revealed his gentle soul
With a wit of gold
When of tomorrow's weather he foretold

His poems have given us much to borrow
His words leave us no need for pain or sorrow
Nor any worries about tomorrow

Scientists say matter can neither
be created nor destroyed
So know we are with you, Weatherman Floyd

Now Rest in eternal peace with Stephanie
In Jesus' name we pray.

Marty Brumback, White Plains, Maryland



Collage of pictures of Floyd with his weather friends on pages 5 & 6

FRANCIS FLOYD ABELL



Stephanie and Floyd



Center top: Floyd's Weather Truck



Willard Scott and Floyd



Top: Floyd and his nephew
Bottom: Floyd and his famous hat

Joe Moyer, Maryland / Delaware State Climatologist and Floyd in the 1980's

Floyd and his nephew crabbing



Floyd and his weather friends at his home in Hollywood 1997



Floyd's Weather Truck

Continued on page 6

FRANCIS FLOYD ABELL



Floyd at ACON Weather Parties held by Herb Close of Manchester

Top: Dan Hanson, Marty Brumback with Floyd 2004

Center Left: Jim Vaughn with Floyd 2003 Center Right: Kevin Shaw with Floyd 2005

Bottom left: Stan Rossen, Marty Brumback, Ray Muller with Floyd 2005

**ACON MD / DE / DC
MAY 2010 SUMMARY**

OBSERVER	STATION <i>COUNTY, STATE</i>	TEMPERATURE									PEAK WIND			PRECIPITATION					SNOWFALL				OBS TIME		
		AVG MAX	AVG MIN	MEAN	MAX	DAY	MIN	DAY	MAX >=90	MAX <=32	MIN <=32	GUST	DIR	DAY	TOTAL	MAX DAY	DATE	YEAR	DAYS >=.01"	DAYS >=1"	TOTAL	MAX DAY		DATE	SEA- SON
<i>New Castle, Delaware</i>																									
Gallaher, Gary	Bear 2 SW	75.4	53.9	64.7	91	26+	33	10+	2	0	0	44	W	8	2.19	0.69	18	19.46	10	0	0.0	0.0	72.7	2400	
Legates, David	Middletown 6 N	75.7	55.1	65.4	92	31	37	10	2	0	0	29		8	1.30	0.52	18	<u>14.89</u>	12	0				2400	
NWS Wilmington	New Castle Co. Apt.	75.4	55.7	65.6	92	26	36	11	1	0	0	52	W	8	2.32	0.79	14	18.51	11	0	0.0	0.0	72.7	2400	
UofDE AG FARM DEOS***	Newark	75.7	55.1	65.4	93	31	35	11	2	0	0	27		14	2.75	1.11	14	<u>15.30</u>	13	1				2400	
U of D REC DEOS***	Townsend 4 W	73.8	54.7	64.3	91	31	35	11	1	0	0	36		8	1.91	0.87	18	<u>15.96</u>	10	0				2400	
<i>Sussex, Delaware</i>																									
NWS Georgetown	Sussex Co. Airport	77.4	55.4	66.4	93	31	35	11	1	0	0	37	SW	8	1.73	1.28	18	17.05	8	1				2400	
U of D REC DEOS***	Georgetown 5 SW	76.5	55.4	66.0	91	31	35	11	1	0	0	39		14	1.70	1.12	18	<u>14.70</u>	5	1				2400	
U of D REC DEOS***	Harbeson 8 S	75.4	55.2	65.3	92	31	36	11	2	0	0	31		14	1.86	1.47	18	<u>16.52</u>	7	1				2400	
<i>Allegany, Maryland</i>																									
Latta, Greg	Frostburg	70.0	48.6	59.3	86	2	28	10	0	0	2				7.39	2.21	29	21.92	18	3	T	T	12	102.7	0700
Mullins, Nate**	LaVale	73.1	53.4	63.3	92	1	33	10	1	0	0				5.90	1.27	17	17.96	15	2	0.0	0.0	78.3	2400	
<i>Anne Arundel, Maryland</i>																									
Hanson, Dan	Pasadena 2 N	77.5	56.5	67.0	94	26	34	10	4	0	0	33	W	8	2.12	0.61	28	<u>13.59</u>	9	0	0.0	0.0		2400	
Jug Bay Wetlands	Lothian	78.7	56.4	67.6	91	28	32	11	3	0	1				2.77	1.01	30	<u>15.41</u>	12	1	0.0	0.0	52.8	0900	
NWS Baltimore	BWI Airport	77.3	57.4	67.4	92	27+	35	10	3	0	0	52	W	8	3.49	1.02	27	17.61	11	1	0.0	0.0	80.7	2400	
Stoudt, Jeff	Laurel 2 E	76.5	58.1	67.3	91	27+	38	10	3	0	0				2.59	0.51	12	17.36	13	0	0.0	0.0	88.5	2400	
<i>Baltimore, Maryland</i>																									
Sharrow, Marty	Owings Mills 2 SE	75.6	55.6	65.6	92	27	34	10	4	0	0				2.42	0.82	28	16.54	10	0	0.0	0.0	97.5	2400	
<i>Baltimore City, Maryland</i>																									
Manfre, Joe	Baltimore 2 SE	78.8	61.4	70.1	95	31	42	10	5	0	0				3.21	0.67	27	15.95	12	0	0.0	0.0	79.0	1800	
Maryland Science Ctr	Baltimore Inner Harbor	77.9	60.8	69.4	94	31	42	10	3	0	0				2.45	0.60	27	15.69	12	0				2400	
<i>Carroll, Maryland</i>																									
Close Jr, Herb	Manchester 1 SW	72.5	53.5	63.0	89	27	31	10	0	0	1				2.83	0.81	28	15.94	18	0	0.0	0.0	94.7	2300	
Hartsock, Ralph	Westminster 4 SSE	79.4	57.6	68.5	95	27+	34	10	5	0	0				3.62	1.26	28	<u>17.71</u>	11	1	0.0	0.0	88.0	1900	
Miller, Bobby	Millers 4 NE	74.6	54.1	64.4	87	1+	31	10	0	0	1				3.56	1.51	28	15.96	12	1	0.0	0.0	87.6	1800	
Muller, Ray	Westminster City			65.3	90	27+	33	10	0	0	0	45	SW	8	2.65	0.77	23	14.75	11	0	0.0	0.0	85.0	1900	
<i>Charles, Maryland</i>																									
Brumback, Marty	Bryans Road 2 ESE	78.4	57.8	68.1	93	27	38	10	3	0	0				1.68	0.72	17	15.20	7	0	0.0	0.0	72.6	2400/2100	
<i>Frederick, Maryland</i>																									
Glass, Eric	Emmitsburg 2 SE	73.2	53.1	63.2	90	28	36	11	1	0	0				5.13	2.60	23	19.38	11	1	0.0	0.0	71.0	0630	
<i>Garrett, Maryland</i>																									
Harvey, Rebecca	Eagle Rock																	<u>4.60</u>					<u>98.2</u>	0800	

**ACON MD / DE / DC
MAY 2010 SUMMARY**

OBSERVER	STATION <i>COUNTY, STATE</i>	TEMPERATURE									PEAK WIND			PRECIPITATION					SNOWFALL				OBS TIME							
		AVG MAX	AVG MIN	MEAN	MAX	DAY	MIN	DAY	MAX >=90	MAX <=32	MIN <=32	GUST	DIR	DAY	TOTAL	MAX DAY	DATE	YEAR	DAYS >=.01"	DAYS >=1"	TOTAL	MAX DAY		DATE	SEA- SON					
<i>Howard, Maryland</i>																														
Giannola, Rich	Laurel JHU / APL	75.4	56.9	66.2	92	26	39	10	1	0	0	44	W	8	2.83	0.78	23	15.76	12	0	0.0	0.0	88.3	2400						
<i>Montgomery, Maryland</i>																														
Berger, Ron	Norbeck 1 SE	75.1	56.7	65.9	91	27	36	10	1	0	0				3.60	1.13	23	16.21	13	1	0.0	0.0	79.9	2200						
Cohen, Rob	Potomac 4 N	75.3	57.9	66.6	90	27	39	10	1	0	0				4.40	1.58	23	16.09	10	1	0.0	0.0	76.9	2100						
Giannola, Rich	Olney 1 S	74.4	56.8	65.6	90	27	37	10	1	0	0				2.81	1.01	23	14.98	10	1	0.0	0.0	85.0	2400						
Holden, Richard	Clarksburg 2 ENE	74.2	56.1	65.2	89	27	37	10	0	0	0	40	W	8	4.53	1.35	23	19.49	11	1	0.0	0.0	102.7	2400						
Roth, David	Montgomery Village 1SW	77.0	59.5	68.3	94	27	39	10	4	0	0				3.29	<u>M</u>	<u>15.39</u>	<u>M</u>	<u>M</u>					2400						
Rossen, Stan	Glenmont 1 NNE	76.7	56.4	66.6	92	31	37	10	2	0	0	15		8+	3.89	1.45	23	16.06	10	2	0.0	0.0	76.4	2400						
Scafide, Tony	Bethesda	74.9	57.7	66.3	89	27	38	10	0	0	0	21	W	8	2.21	0.88	23	<u>9.11</u>	13	0					2400					
Shaw, Kevin	Gaithersburg 2 WNW	76.1	56.9	66.5	91	27	37	10	2	0	0	28	W	8	3.11	1.39	23	15.25	10	1	0.0	0.0	80.7	2400						
Terry, Joe	Forest Glen	79.1	56.5	67.8	94	27	36	10	8	0	0	36	NW	8	3.55	1.31	23	15.81	13	1	0.0	0.0	75.7	2400						
<i>Prince Georges, Maryland</i>																														
Smith, Brian	Oxon Hill	77.7	57.7	67.7	93	27	42	10	3	0	0				2.77	0.83	27	14.57	9	0	0.0	0.0	59.6	2300						
<i>St. Marys, Maryland</i>																														
Abell, Floyd	Hollywood	STATION CLOSED APRIL 2010																											55.6	2400
Zyla, John	Ridge	78.0	60.0	69.0	91	1+	41	10	3	0	0				2.68	1.24	18	<u>13.13</u>	7	1	0.0	0.0	45.1	2400						
<i>Washington, Maryland</i>																														
Hutto, Max	Smithsburg 1.5 SW	75.1	53.7	64.4	90	27+	32	10	2	0	1	33	W	9	4.06	1.30	23	17.86	12	1	0.0	0.0	73.9	2400						
Keefer, Greg	Hagerstown 1 E	75.5	56.3	65.9	91	26+	34	10	2	0	0	45	W+	8+	2.89	0.77	23	16.51	11	0	0.0	0.0	70.5	2400						
Vaughn, Jim	Smithsburg 2 NE																	<u>16.77</u>						77.5	2400					
<i>Wicomico, Maryland</i>																														
NWS Salisbury	Wicomico Co. Apt	77.8	54.5	66.2	90	31	35	11	1	0	0	39	W	9	2.65	1.50	18	18.51	8	1	0.0	0.0	2.0	2400						
<i>Arlington, Virginia</i>																														
NWS Washington National	National Airport	78.4	60.3	69.4	93	27	43	10	3	0	0	47	WNW	8	2.40	0.64	23	11.73	9	0	0.0	0.0	56.1	2400						
<i>Loudon, Virginia</i>																														
NWS Washington Dulles	Dulles Airport	77.7	56.3	67.0	92	27	34	10	3	0	0	45	WSW	14	5.42	2.40	23	16.71	11	2	0.0	0.0	73.2	2400						
Shaffer, Lance	Sterling 4 N	75.5	58.0	66.8	90	27	36	10	1	0	0				5.09	2.53	23	18.98	10	1	0.0	0.0	75.3	2400						
<i>Tucker, West Virginia</i>																														
Leshner, Dave	Davis 3 SE WV	67.6	48.3	58.0	81	3	28	10+	0	0	3				4.90	0.85	2	24.08	15	0	T	T	9	250.9	0700					
SECTION AVERAGE*		75.5	55.0	65.2											3.09			16.94						77.4						

NOTES:

M OR UNDERLINE = MISSING DATA
 > = INCLUDED IN NEXT DAYS DATA
ITALIC = ESTIMATED DATA

*SECTIONAL AVERAGE DOES NOT INCLUDE DATA FROM WEST VIRGINIA.

**OBSERVER FOR LAVALE IS SCOTT LOHR. DATA COMPILED BY NATE MULLINS.

*** DATA FROM DEOS (DELAWARE ENVIROMENTAL OBSERVING SYSTEM) PERMISSION GRANTED FOR USE OF DATA

*** REC= UNIVERSITY OF DELAWARE RESEARCH AND EDUCATION CENTER

National Weather Service station data listed herein is preliminary and may be subject to change. The data has not been certified and cannot be used in legal actions.
 Only reports certified by the National Climatic Data Center in Asheville, NC may be used for these purposes.
 Accuracy of Data from ACON Observers not guaranteed.

GARY GALLAHER 6/29/10 REV 8/9/10

ACON MD / DE / DC
MAY 2010 DAILY TEMPERATURES

STATION	1	2	3	4	5	6	7	8	9	10	11	12	13	14	15	16	17	18	19	20	21	22	23	24	25	26	27	28	29	30	31	AVG	OBS TIME	
BEAR 2 SW, DE GALLAHER	86	87	81	80	78	80	72	77	58	62	58	59	65	84	74	72	67	53	66	81	85	74	75	76	80	91	86	73	79	87	91	75.4	2400 EDT	
MIDDLETOWN 6 N LEGATES	88	88	81	81	80	80	73	77	59	62	58	58	66	85	75	72	67	53	66	82	87	74	73	75	81	91	86	73	80	88	92	75.7	2400 EDT	
WILMINGTON , DE NWS NEW CASTLE CO APT	86	87	81	82	78	80	72	78	58	62	57	57	65	84	74	73	68	53	67	82	84	75	75	76	79	92	85	71	79	87	89	75.4	2400 EST	
NEWARK AG FARM, DE U OF DE DEOS	89	89	82	81	81	80	73	77	57	61	58	58	67	85	73	72	67	52	66	81	87	75	73	74	81	90	87	75	80	85	93	75.7	2400 EDT	
TOWNSEND 4 W, DE U of D REC DEOS	86	85	79	79	79	80	73	76	57	60	55	61	64	84	73	70	64	53	63	78	85	73	73	73	78	89	84	61	79	85	91	73.8	2400 EDT	
GEORGETOWN, DE NWS SUSSEX CO APT	89	86	82	84	82	88	77	84	62	63	60	81	65	87	77	74	64	58	66	79	86	78	72	69	76	89	80	77	82	89	93	77.4	2400 EST	
GEORGETOWN, DE U of D REC DEOS	88	85	81	83	81	86	77	84	61	62	59	79	65	86	75	71	64	58	66	78	86	76	73	71	76	87	81	74	82	87	91	76.5	2400 EDT	
HARBESON 8 S, DE U of D REC DEOS	91	87	82	83	79	88	71	84	60	61	57	77	61	87	76	69	63	58	65	77	85	74	70	67	73	87	77	71	81	87	92	75.4	2400 EDT	
FROSTBURG LATTA	82	86	73	74	70	79	70	73	57	50	58	59	69	65	81	70	68	50	49	55	74	77	62	71	68	76	82	83	79	77	84	70.0	0700 EDT	
LAVALE MULLINS**	92	74	77	74	80	72	77	74	53	59	45	68	55	83	72	72	55	54	60	82	81	66	76	69	79	86	88	85	85	87	86	73.1	2400 EDT	
PASADENA 2 N HANSON	89	89	82	83	82	83	73	77	61	66	56	70	61	89	78	73	61	54	67	84	86	78	73	78	82	94	92	75	83	91	92	77.5	2400 EDT	
LOTHIAN JUG BAY	85	90	89	82	85	84	86	80	57	>	69	68	82	65	88	81	72	63	57	70	82	88	78	73	78	80	89	91	>	80	90	78.7	0900 EDT	
BALTIMORE NWS BWI APT	88	86	82	81	81	81	74	76	60	64	54	78	62	88	78	76	63	56	67	83	87	79	75	77	81	91	92	75	81	89	92	77.3	2400 EST	
LAUREL 2 E STOUDT	90	87	80	81	83	81	75	76	60	65	55	78	61	86	78	74	60	54	65	81	86	78	72	75	80	88	91	72	80	87	91	76.5	2400 EST	
OWINGS MILLS 2SE SHARROW	90	87	79	81	82	81	74	71	59	62	51	75	61	88	75	71	60	52	62	82	86	77	71	76	80	90	92	72	79	88	90	75.6	2400 EDT	
BALTIMORE 2SE MANFRE	90	89	84	83	84	84	76	78	61	66	56	76	64	89	79	76	64	57	69	83	89	79	76	79	83	93	93	76	82	90	95	78.8	1800 EDT	
BALT INNER HARBOR MD SCIENCE CENTER	89	89	84	83	83	83	75	76	60	65	56	74	61	89	77	75	64	56	67	83	87	79	75	79	81	91	92	76	82	89	94	77.9	2400 EST	
MANCHESTER 1SW CLOSE	87	85	78	77	78	76	72	69	54	59	49	68	59	83	71	68	57	49	60	78	84	73	68	73	78	84	89	70	79	83	89	72.5	2300 EDT	
WESTMINSTER 4 SSE HARTSOCK	91	91	85	81	82	79	79	72	62	64	56	76	70	88	78	74	67	56	71	82	90	84	77	86	86	89	95	80	88	88	95	79.4	1900 EDT	
MILLERS 4NE MILLER	87	85	81	76	78	77	73	69	61	59	58	65	59	83	82	70	66	53	62	79	83	80	70	76	78	86	87	83	78	83	87	74.6	1800 EDT	
WESTMINSTER CITY MULLER																																		1900 EDT
BRYANS ROAD 2 ESE BRUMBACK	90	88	81	85	84	85	76	80	65	66	55	81	65	89	81	76	62	56	68	80	86	79	76	77	80	89	93	76	80	89	91	78.4	2400 EDT	
EMMITSBURG 2 SE GLASS	82	87	83	79	77	79	76	71	68	56	62	51	65	59	83	73	71	59	53	63	80	83	75	72	76	77	87	90	69	78	85	73.2	0630 EDT	

ACON MD / DE / DC
MAY 2010 DAILY TEMPERATURES

STATION	1	2	3	4	5	6	7	8	9	10	11	12	13	14	15	16	17	18	19	20	21	22	23	24	25	26	27	28	29	30	31	AVG	OBS TIME		
EAGLE ROCK HARVEY																																		0800 EST	
LAUREL JHU / APL	88	86	81	80	82	78	74	75	57	62	53	78	59	87	75	71	59	53	63	81	85	75	71	77	79	86	92	72	80	88	90	75.4	2400 EDT		
GIANNOLA	59	72	68	65	53	61	50	52	44	39	40	49	48	57	60	56	50	49	50	53	58	63	63	63	63	60	61	59	65	68	64	56.9			
NORBECK 1 SE	88	85	79	79	83	79	73	73	60	64	53	76	59	83	75	70	62	54	64	78	87	77	70	74	76	86	91	76	76	88	89	75.1	2200 EDT		
BERGER	56	70	68	64	51	63	49	58	44	36	39	49	49	57	60	56	52	50	49	49	54	63	64	64	64	58	68	60	64	66	64	56.7			
POTOMAC 4N	86	85	80	79	82	79	75	73	59	64	53	75	62	85	76	70	67	55	62	80	84	76	72	74	77	86	90	74	80	85	89	75.3	2100 EDT		
COHEN	53	70	68	64	52	65	60	67	46	39	41	49	52	59	65	56	54	52	48	49	49	64	65	63	64	59	65	62	65	64	65	57.9			
OLNEY 1 S	88	85	79	80	81	80	73	72	59	63	51	73	58	>	84	72	58	54	61	79	83	75	70	74	76	85	90	74	79	87	89	74.4	2400 EDT		
GIANNOLA	56	70	67	63	54	65	50	53	44	37	41	48	49	>	56	57	53	50	49	51	57	63	63	63	63	60	67	60	64	65	65	56.8			
CLARKSBURG 2ENE	86	83	79	78	80	78	73	70	57	63	51	75	59	84	74	70	60	54	60	79	83	77	74	76	80	85	89	73	79	84	88	74.2	2400 EST		
HOLDEN	60	69	67	62	54	59	48	48	41	37	43	48	47	56	58	55	50	49	48	52	63	60	63	63	63	61	60	60	63	65	67	56.1			
MONTGOMERY VILLAGE	93	89	82	82	84	81	76	72	61	64	55	78	61	87	78	71	60	53	M	M	M	M	M	M	75	81	92	94	76	81	89	91	77.0	2400 EDT	
ROTH 1SW	57	73	69	66	55	64	67	55	47	39	44	50	50	59	62	60	53	52	M	M	M	M	M	M	65	66	61	68	64	66	67	67	59.5		
GLENMONT 1NNE	91	88	81	82	86	83	77	75	63	66	54	78	60	89	78	72	60	54	63	80	86	77	72	75	80	86	89	72	81	87	92	76.7	2400 EST		
ROSSEN	53	71	68	60	52	61	50	53	45	37	39	50	50	59	57	55	52	51	49	49	55	63	65	64	62	58	64	62	65	65	64	56.4			
BETHESDA	86	85	80	80	80	79	73	75	59	63	53	77	60	85	76	70	62	55	63	79	83	76	72	75	77	86	89	73	78	85	88	74.9	2400 EDT		
SCAFIDE	57	69	68	64	54	64	52	55	46	38	44	50	50	58	63	58	51	50	49	51	56	64	64	63	65	61	67	63	65	66	67	57.7			
GAITHERSBURG 2WNW	88	86	80	81	82	79	75	72	59	66	53	75	61	86	79	74	60	56	62	81	85	77	73	76	81	87	91	74	82	88	90	76.1	2400 EDT		
SHAW	54	70	69	62	52	60	50	53	46	37	41	51	50	58	59	56	53	51	49	50	55	64	64	64	64	59	67	62	66	65	64	56.9			
FOREST GLEN	91	90	83	84	85	84	77	77	65	68	55	80	62	90	80	76	61	56	65	85	90	81	77	80	84	91	94	74	82	91	93	79.1	2400 EDT		
TERRY	54	70	67	60	51	64	49	53	45	36	41	51	50	57	58	57	51	50	47	49	54	64	65	64	61	59	66	62	65	65	65	56.5			
OXON HILL	90	86	80	83	84	82	78	77	63	66	56	79	62	88	79	75	61	56	67	82	86	79	74	79	80	89	93	74	81	89	91	77.7	2300 EDT		
SMITH	58	71	68	60	54	65	52	55	48	42	45	55	51	58	60	59	51	51	49	51	55	62	65	65	59	59	61	61	64	67	68	57.7			
HOLLYWOOD																																		2359 EDT	
ABELL																																			
RIDGE	91	87	80	86	83	90	75	85	66	66	58	81	62	86	82	73	62	58	71	77	83	77	76	77	78	86	88	76	83	85	91	78.0	2400 EDT		
ZYLA	64	72	69	65	65	67	60	59	50	41	48	58	52	57	63	59	52	53	51	54	59	62	66	63	63	60	64	61	65	69	71	60.0			
SMITHSBURG 1.5 SW	89	84	81	78	81	76	73	71	55	63	53	68	59	87	75	72	58	55	63	83	84	74	75	80	82	87	90	72	82	88	90	75.1	2400 EDT		
HUTTO	49	67	62	53	45	55	43	50	42	32	35	50	49	58	56	55	53	50	50	49	53	63	63	64	61	56	60	60	63	59	60	53.7			
HAGERSTOWN 1E	89	84	82	80	81	79	73	69	56	63	52	67	59	89	76	72	60	56	63	82	85	74	74	78	81	89	91	76	83	88	91	75.5	2400 EDT		
KEEFER	55	69	66	57	48	60	46	50	43	34	38	51	50	59	60	58	55	51	51	51	57	63	62	65	65	59	64	63	67	63	64	56.3			
SMITHSBURG 2 NE																																			2400 EDT
VAUGHN																																			
SALISBURY	88	86	82	84	82	88	76	86	63	63	60	80	66	85	78	75	62	61	67	78	85	76	78	78	77	87	87	75	81	88	90	77.8	2400 EST		
NWS WICOMICO CO APT	60	68	68	60	53	54	49	57	41	40	35	51	50	53	54	51	48	51	52	51	51	57	61	61	56	52	59	59	60	64	62	54.5			
WASH NATIONAL	88	87	83	84	83	84	77	79	63	66	57	79	63	89	79	76	64	61	68	83	86	78	74	79	81	90	93	76	79	89	91	78.4	2400 EST		
NWS ASOS	61	71	70	65	59	66	59	55	49	43	46	55	52	59	64	62	53	52	51	54	58	64	67	66	66	63	69	66	66	68	71	60.3			
WASH DULLES	90	88	83	82	84	83	78	76	63	67	55	79	63	89	80	74	64	60	62	81	86	77	75	78	80	87	92	76	81	87	90	77.7	2400 EST		
NWS ASOS	57	70	67	59	50	61	48	54	47	34	39	53	52	59	56	57	53	51	47	47	51	63	65	64	60	58	65	63	67	64	65	56.3			
STERLING 4 N	86	86	83	79	81	80	76	74	63	64	55	78	61	85	77	71	63	57	60	76	82	73	72	78	78	84	90	75	79	88	86	75.5	2400 EDT		
SHAFFER	53	71	71	65	53	62	49	58	47	36	39	54	53	60	63	57	55	52	50	54	63	65	65	65	60	67	63	66	64	66	66	58.0			
DAVIS 3 SE WV	77	74	81	69	66	73	65	79	50	46	53	57	62	72	76	67	65	48	58	56	71	72	63	67	70	73	75	79	77	76	78	67.6	0700 EDT		
LESHER	54	60	60	49	49	51	45	45	30	28	28	38	50	53	47	48	48	43	43	45	45	56	53	55	51	53	53	54	53	53	56	48.3			

ACON MD / DE / DC
MAY 2010 DAILY PRECIPITATION

STATION	1	2	3	4	5	6	7	8	9	10	11	12	13	14	15	16	17	18	19	20	21	22	23	24	25	26	27	28	29	30	31	TOTAL	OBS TIME	
BEAR 2 SW, DE GALLAHER		T	0.14								0.18	0.30		0.59			0.08	0.69				T	0.17	0.02			0.01	0.01	T			2.19 0.0	2400 EDT	
MIDDLETOWN 6 N LEGATES			0.17								0.08	0.04	0.02	0.01	0.01		0.25	0.52				0.01	0.14	0.03			0.02					1.30	2400 EDT	
WILMINGTON , DE NWS NEW CASTLE CO APT		T	0.08								0.06	0.40		0.79			0.12	0.56		T		T	0.15	0.03			0.07	T	0.03	0.03		2.32 0.0	2400 EST	
NEWARK AG FARM, DE U OF DE DEOS			0.11								0.09	0.33		1.11			0.03	0.65			0.01	0.01	0.24	0.07			0.04	0.01	0.05			2.75	2400 EDT	
TOWNSEND 4 W, DE U of D REC DEOS			0.11								0.20	0.33		0.03			0.14	0.87					0.07	0.10			0.03	0.03				1.91	2400 EDT	
GEORGETOWN, DE NWS SUSSEX CO APT								0.01			0.14	0.04		0.15			0.09	1.28					0.01	T			0.01	T				1.73 -	2400 EST	
GEORGETOWN, DE U of D REC DEOS											0.12	0.06		0.37			0.03	1.12															1.70	2400 EDT
HARBESON 8 S, DE U of D REC DEOS											0.10	0.04		0.19			0.04	1.47					0.01				0.01						1.86	2400 EDT
FROSTBURG LATTA			1.32	0.07			0.03	0.15	0.06			0.82 T	0.17	0.11	0.02		0.13	1.26	0.08	0.02		0.01	0.56	0.31	0.06				2.21			7.39 T	0700 EDT	
LAVALE MULLINS**		1.12	0.50			0.03	0.13				0.80	0.10	0.16	0.02			1.27	0.08	0.02			0.76	T	0.07			0.80			0.04		5.90 0.0	2400 EDT	
PASADENA 2N HANSON			0.31								0.19	0.40		0.02			0.26	0.30				0.01	0.02						0.61			2.12 0.0	2400 EDT	
LOTHIAN JUG BAY			0.17	0.02								0.10	0.07		0.10		0.02	0.86	0.02				0.34	0.01			0.05		1.01			2.77 0.0	0900 EDT	
BWI NWS ASOS		T	0.22								0.28	0.37	T	T			0.29	0.37	T			0.02	0.42	0.04	T	T	1.02	0.45	0.01			3.49 0.0	2400 EST	
LAUREL 2 E STOUDT			0.35								0.22	0.51	0.01	0.01			0.35	0.25	T			0.02	0.44	0.06			0.16	0.13	0.08			2.59 0.0	2400 EST	
OWINGS MILLS 2SE SHARROW		T	0.19					T			0.20	0.47		0.11			0.11	0.23				0.03	0.23	0.03	T		0.82					2.42 0.0	2400 EDT	
BALTIMORE 2SE MANFRE			0.22								0.24	0.30	T	0.21			0.16	0.41				0.06	0.28	0.02	0.01		0.67	0.63				3.21 0.0	1800 EDT	
BALT INNER HARBOR MD SCIENCE CENTER			0.26								0.19	0.24		0.29			0.13	0.38				0.06	0.15	0.02	0.01		0.60	0.12				2.45 -	2400 EST	
MANCHESTER 1SW CLOSE		0.01	0.15					0.01	0.02		0.38	0.11	0.01	T			0.23	0.11	0.01			0.04	0.56	0.03	0.01		0.31	0.81	0.01	0.02		2.83 0.0	2300 EDT	
WESTMINSTER 4 SSE HARTSOCK			0.16								0.27	0.32	0.13				0.17	0.16					0.92	0.15	0.04		1.26			0.04		3.62 0.0	1900 EDT	
MILLERS 4NE MILLER		T	0.28			T		0.02			0.25	0.24	T		0.25		0.10	0.17	T			0.01	0.58	0.09	T		1.51	T		0.06		3.56 0.0	1800 EDT	
WESTMINSTER CITY MULLER			0.13								0.34	0.18	T				0.21	0.07				0.08	0.77	0.08	0.06		0.71			0.02		2.65 0.0	1900 EDT	
BRYANS ROAD 2 ESE BRUMBACK											0.10	0.01		0.01			0.72	0.40				0.07	0.37									1.68 0.0	2100 EDT	
EMMITSBURG 2 SE GLASS			0.63					0.02				0.63	0.12	T	0.01		T	0.22	0.10				2.60	0.05			0.74	0.01				5.13 0.0	0630 EDT	

**ACON MD / DE / DC
MAY 2010 DAILY PRECIPITATION**

STATION	1	2	3	4	5	6	7	8	9	10	11	12	13	14	15	16	17	18	19	20	21	22	23	24	25	26	27	28	29	30	31	TOTAL	OBS TIME	
EAGLE ROCK HARVEY																																0800 EST		
LAUREL JHU / APL GIANNOLA			0.38								0.26	0.51	0.01				0.22	0.10	0.01			0.04	0.78	0.02			0.41	0.09				2.83 0.0	2400 EDT	
NORBECK 1 SE BERGER		T	0.50								0.16	0.91	0.02				0.39	0.09	0.01			0.15	1.13	0.07	0.01			0.15	0.01			3.60 0.0	2200 EDT	
POTOMAC 4N COHEN			T	0.61							0.18	0.91					0.40	0.06	T			0.24	1.58	0.16			0.17	0.09				4.40 0.0	2100 EDT	
OLNEY 1 S GIANNOLA			0.49								0.17	0.42	0.03				>	0.34	T	0.01		0.17	1.01	0.02				0.15				2.81 0.0	2400 EDT	
CLARKSBURG 2ENE HOLDEN			0.43					T			0.21	0.85	0.03	0.04			0.30	0.04				0.68	1.35				0.38	0.22				4.53 0.0	2400 EST	
MONTGOMERY VILLAGE ROTH 1SW			0.37						0.01											M	M	M	M	M				0.13	0.08			0.59 0.0	2400 EDT	
GLENMONT 1NNE ROSSEN		T	0.49					T			0.15	1.00					0.41	0.07				0.08	1.45	0.01			0.01	0.22				3.89 0.0	2400 EST	
BETHESDA SCAFIDE			0.40								0.13	0.32	0.10	0.02			0.19	0.07	0.01	0.01			0.88	0.03			0.01	0.04				2.21 -	2400 EDT	
GAITHERSBURG 2WNW SHAW		T	0.52								0.12	0.41	0.01	T			0.28	0.02	T			0.30	1.39		T		0.05	0.01	T			3.11 0.0	2400 EDT	
FOREST GLEN TERRY		T	0.53					T			0.15	0.76	0.01	0.02			0.43	0.08	T			0.06	1.31	0.04			0.02	0.13	0.01			3.55 0.0	2400 EDT	
OXON HILL SMITH		T	0.18								0.10	0.01		0.28			0.61	0.29	T			0.06	0.41		>	>	0.83					2.77 0.0	2300 EDT	
HOLLYWOOD ABELL																																	2359 EDT	
RIDGE ZYLA											0.06	0.01					0.39	1.24				0.04	0.47					0.47					2.68 0.0	2400 EDT
SMITHSBURG 1.5 SW HUTTO		0.11	0.89					0.04	0.01		0.70	0.07	0.01	T			0.33	0.14				0.45	1.30	T				0.01					4.06 0.0	2400 EDT
HAGERSTOWN 1E KEEFER		0.10	0.54					0.02	0.04		0.49	0.15		T			0.25	0.11				0.39	0.77	T						0.03			2.89 0.0	2400 EDT
SMITHSBURG 2 NE VAUGHN																																	0.00 0.0	2400 EDT
SALISBURY NWS WICOMICO CO APT			T								0.09	0.19				0.01	0.25	1.50					0.40				0.02	0.19	T				2.65 0.0	2400 EST
WASH NATIONAL NWS ASOS			T	0.23				T	T		0.11	T		0.14			0.49	0.14				0.06	0.64	T	T		0.26	0.33					2.40 0.0	2400 EST
WASH DULLES NWS ASOS		0.01	0.55					T			0.09	0.05	T	0.07		T	0.53	0.01	T			0.61	2.40	0.01			1.09	T					5.42 0.0	2400 EST
STERLING 4 N SHAFFER			0.44								0.20	0.54	T				0.45	0.06	0.01			0.41	2.53	0.03	t			0.42					5.09 0.0	2400 EDT
DAVIS 3 SE WV LESHAR		0.85	0.30					0.31	0.02		T	0.78	0.28		0.09		0.38	0.47	0.45	0.04			0.33	0.07	0.02				0.51	T			4.90 T	0700 EDT