



<http://www.jhuapl.edu/weather/education/ACONdata.html>

ATLANTIC COAST OBSERVER NETWORK, MD / DE / DC CHAPTER WITH DATA FROM NEARBY AREAS

HOT AND DRY

June was one of the hottest June's in the region's history. **Greg Keefer** of **Hagerstown 1E**, where records date back to 1898, broke the old record set in 1899 and tied in 1943 by one degree. NWS Washington National Airport (DCA) recorded its warmest June, NWS Baltimore (BWI) its 2nd warmest and NWS Wilmington DE (ILG) its 3rd warmest. Along with the heat came dry conditions. Many stations reported less than 2 inches of rainfall. Less than one inch fell at some stations in Northern Delaware and North Central Maryland.

The month began warm and humid with temperatures ranging from the mid 80's to lower 90's. Scattered thunderstorms with varying rainfall amounts, mostly less than a quarter of an inch, occurred across the region during the first 6 days. Total amounts ranged from a Trace in portions of Northern Delaware and North Central Maryland to 3.75" at Frostburg. A severe thunderstorm with 1" hail occurred at **Millers 4 NE** on the evening of the 4th. See radar picture submitted by **Bobby Miller** on page 3.

The first of three "cool" periods occurred from the 7th to the 9th. Rain showers fell on the 9th when temperatures failed to rise out of the 60's at many locations. Rainfall amounts were generally less than a half inch. The heaviest amount reported was 0.66" by **Nate Mullins (Scott Lohr)** of **LaVale** and 0.62" by **Mac Hutto** of **Smithsburg 2 NE**.

Near 90 degree temperatures returned from the 12th to the 14th. The second "cool" period occurred on the 14th and 15th. Seasonal temperatures returned on the 15th. Showers and thunderstorms occurred again on the 16th. This has been a typical occurrence during the first half of the month. Most of these storms were light and with June's high sun angle and heat the moisture quickly evaporated stressing crops and vegetation.

The longest and hottest stretch of 90 degree plus temperatures started on the 19th and would not end till the 30th. During this stretch temperatures the 100 degree mark would be broken at the following ACON observer sites: **Baltimore 2 SE** (three days), **Pasadena 2N** (two days), and one day each at **Westminster 4 SSE**, and **Ridge**. Scattered thunderstorms occurred on the 22nd and 24th. Lightning caused two house fires on the 22nd in Charles County. See page 4 for an article provided by **Marty Brumback** of **Bryans Road 2 ESE**.

Scattered thunderstorms also occurred the 28th. Wilmington NWS reported a wind gust of 70 mph. **Gary Galaher** of **Bear 2 SW DE** reported a peak wind gust of 49 MPH. **Kevin Shaw** of

EXTREMES REPORTED BY

ACON OBSERVERS

MAXIMUM TEMPERATURE

Baltimore 2 SE	102
Westminster 4 SSE	101
Ridge	100

MINIMUM TEMPERATURE

Davis 3 SE WV	37
Frostburg	44
Smithsburg 2 NE	45
Manchester 1 S	46

WARMEST AVG. TEMP.

Baltimore 2 SE	81.8
Ridge	79.5
Montgomery Village 1 SW	78.5

COLDEST AVG. TEMP.

Davis 3 SE WV	65.5
Frostburg	68.4
Millers 4 NE	72.8

MAXIMUM PRECIPITATION

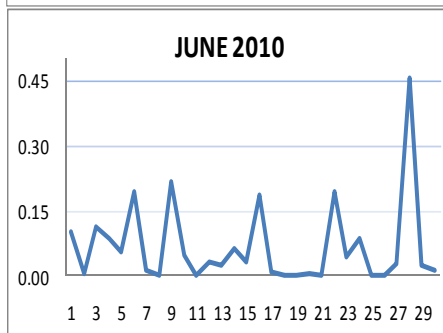
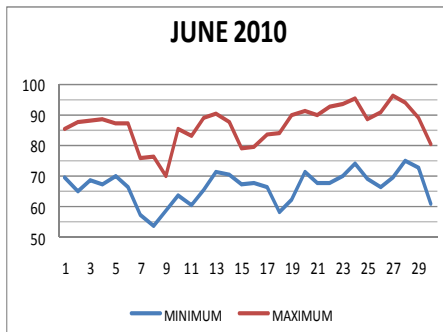
Frostburg	5.15
Davis 3 SE WV	3.97
Gaithersburg 2 WNW	3.48
Bethesda	3.47

MINIMUM PRECIPITATION

Owings Mills 2 SE	0.37
Middletown 6 N DE	0.92
Baltimore 2 SE	1.04

Gaithersburg 2 WNW reported a rainfall total of 1.44". Along with the 0.65 that fell on the 27th the two day total accounted for 60% of his monthly total.

The month ended on a sunny, much cooler day with dew points in the upper 40's and temperatures in the lower 80's.



ACON MD/DE Network

Daily average temperatures and precipitation based on observation times, not calendar days.

OBSERVER COMMENTS FOR JUNE 2010

Gary Gallaher of Bear 2 SW, DE

Dry, hot month. Fifth driest and tied 1973 for the warmest June. 13 days with max temp 90° or greater broke the old record of 11 set in 1991. Yard completely brown.

22nd - Thunderstorm with hail passed just to the north / east.

28th - AM minimum temperature 80°. Afternoon thunderstorm lowered temperature from 97° to 77°. PWG 49 MPH. Tree limbs down in neighborhood.

Nate Mullins of LaVale

73.7°, warmest June on record. Old record was 73.3° set in 1973. Dry month with a lack of significant thunderstorms or rainfall events. Everything seem to split and go north and/or south or dissipate when they crossed the Allegheny Front.

28th - All time June record high min temperature of 77°. Previous record was 75° set on June 26, 1948.

Jeff Stoudt of Laurel 2 E

22nd - Brief ++TSRA ~ 1900.

28th - +TSRA early afternoon, SHRA late evening.

Marty Sharrow of Owings Mills

7th - Sunny, breezy, pleasantly cooler.

9th - Cool with showers.

27th - Sun, very hot & humid.

Joe Manfre of Baltimore 2SE

1st - Cloudy, hot, humid, afternoon thundershower.

19th - Partly cloudy, hot, low humidity.

Ralph Hartsock of Westminster 4 SSE

Very dry and hot month.

9th - Rain and cool.

10th - Early shower, sunny and warmer.

23rd - Sunny, hot, dry. Grass needs water.

27th - Sunny, humid - blazing PM heat.

Bobby Miller of Millers 4 NE

4th - Three storms, 5PM, 8 PM & 8:15 to 8:30 PM. 1" hail 8:24PM to 8:26 PM. Largest hail since 6/15/1980.

10th - Ground fog before sunrise.

24th - Hot, windy

Ray Muller of Westminster City

8th - Sunny, pleasant. 51° at 6 AM.

27th - Very hot humid day. Temperature 96° at 4 PM.

Marty Brumback of Bryans Road 2 ESE

22nd - TRW+ w/CCCG LTG struck between 8:15 & 8:30 PM causing much small limb and tree damage. One tree down behind my house. PWG 39 from the SW just before 8:20 PM.

Eric Glass of Emmitsburg 2 SE

1st - Sunny, clear

25th - Not as humid.

26th - Low haze, sunny and warm.

Rich Giannola of JHU/APL

28th - +TSRA 2:00 - 2:30 PM. Maximum temperature at 1:33 PM and minimum temperature at 2:20 PM were separated by less than an hour.

Rob Cohen of Potomac 4 N

Warmest June on record. Previous warmest was 1994.

23rd, 24th - Daily record maximum temperature.

30th - Low humidity.

Rich Giannola of Olney 1 S

9th - SHRAs during day, ending by late afternoon = 0.13". SHRA in evening ending by 10:00 PM = 0.03".

22nd - TS began 7:30PM, +TSRA with gusty winds began 7:40PM ending by 7:55PM. Leaves and small twigs down.

Richard Holden of Clarksburg 2 ENE

Thunder on the 3rd, 5th, 12th, 22nd, 27th & 28th.

Stan Rossen of Glenmont 1 NNE

6th - Thunder first heard at 12:27PM EST but precip held off to almost 1:15PM. It quickly became heavy for a few minutes. The barometer rose from 29.52" at 1:06PM to 29.59" at 1:17PM and fell back down to 29.56" at 1:44PM.

Kevin Shaw of Gaithersburg 2 WNW

Warmest June on record. Monthly minimum temperature of 54° was the warmest monthly low temperature ever. The previous was 53° set in 1989 & 1995. Three daily record high along with six record high minimum temperatures set.

Joe Terry of Forest Glen

Warmest June in 16 year station history, making this the fourth month in a row with either the warmest or second warmest on record.

6th - Mid afternoon thunderstorm with some intense lightning, heavy rain and one good gust of wind but overall storm was of short duration.

27th - 99°, warmest so early in the season.

John Zyla of Ridge

13 days with 90 degree temperatures beat the old record of 10 set in 1999.

24th - 100° for only the second time in June and the first since July 25, 2005.

Max Hutto of Smithsburg 1.5 SW

9th - Cloudy, cool with several periods of rain.

Greg Keefer of Hagerstown 1 E

Hottest June on record with an average temperature of 76.0. Old record was 75.0 set in 1899 & 1943.

23rd - Tied record high of 95 set in 1899.

24th - Tied record high of 96 set in 1997 & 1966.

27th - Record high of 98 breaks old record 97 set 1966.

28th - Overnight low of 77 very rare in July and August but almost unheard of in June.

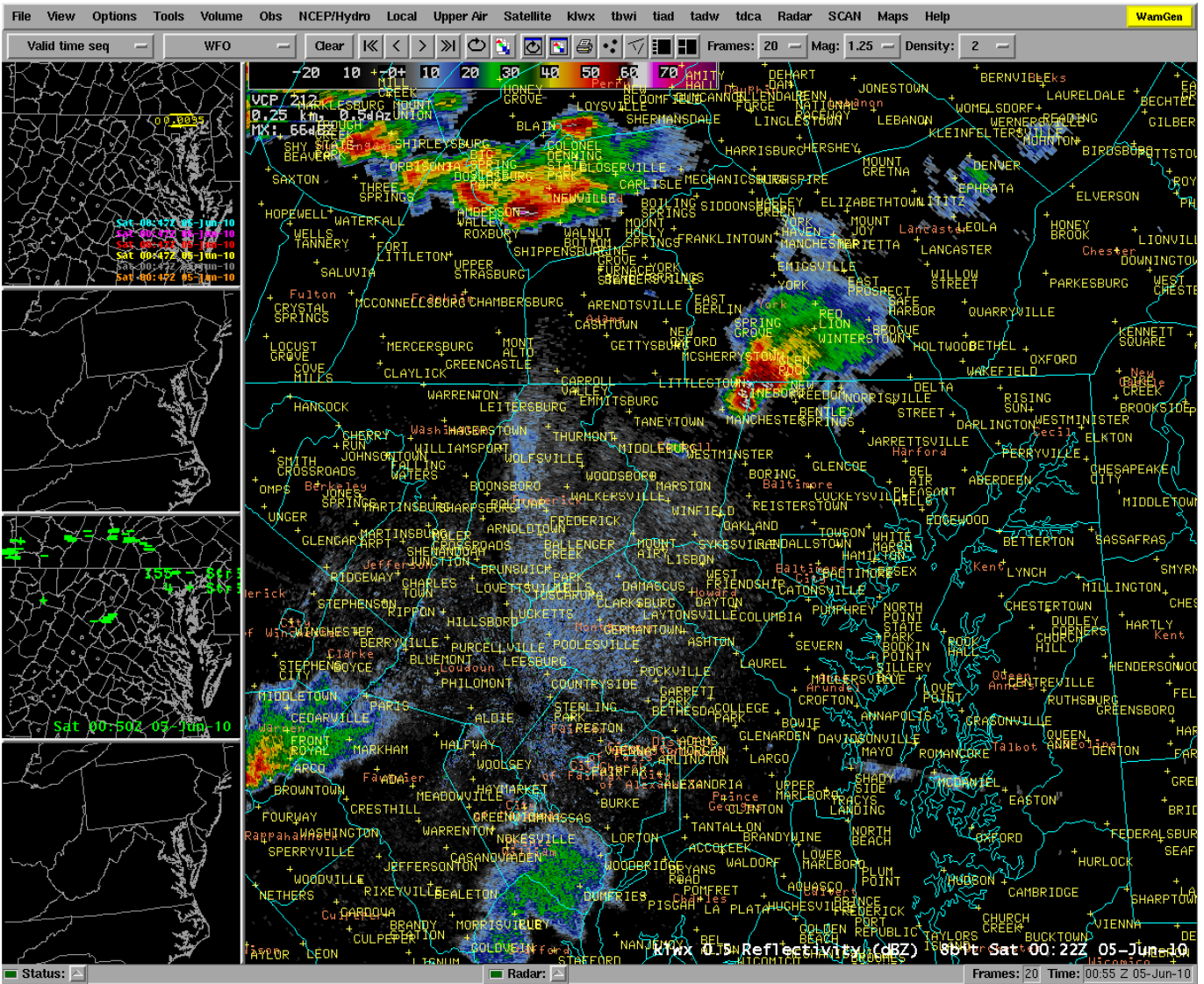
Jim Vaughn of Smithsburg 2 NE

Third warmest and fifth driest June. There were no PWG over 40 MPH which is actually rare in these here parts.

Lance Shaffer of Sterling 4 N VA

"Too dry and too much heat".

Compiled by Gary Gallaher, MD/DE ACON Data Collector and Report Writer, from data received from dedicated observers. Without your observations each month this report will not be possible.



Severe thunderstorm which dropped 1" hail on Millers 4 NE MD.
 Time stamp of the radar is 00:22Z Saturday 05 June 2010



Partial rainbow June 28.
 Submitted by Marty Brumback of Bryans Road 2 ESE



Brown yard as a result of dry, hot weather.
 Submitted by Gary Gallaher of Bear 2 SW

Lightning strikes cause 2 house fires

■ Thousands without power at height of storm

By **NANCY BROMLEY McCONATY**
Staff writer

Heat, humidity and Mother Nature clashed Tuesday evening and the battle whipped up a thunderstorm that sparked two house fires and left more than 8,000 households in the dark for several hours in Charles County.

A powerful thunderstorm raged through the county between 8:15 and 9 p.m., bringing with it lightning and winds

that topped out at 60 mph in some locations, according to the National Weather Service in Sterling, Va. The wind toppled trees and slung power lines to the ground, particularly in the western section of Charles County.

Lightning strikes are being blamed for house fires on Biggs Farm Place in La Plata and Chicamuxen Road in Indian Head, according to 10th District Volunteer Fire Department Chief Wally Danielson. Calls for the house fires came in simultaneously to the Marbury-based fire department, he said.

The two-story, log cabin-style home

on Biggs Farm Place caught fire when lightning struck the corner of the house, Danielson said. The blaze quickly moved inside of the house and spread to the crawl space underneath the structure, he said.

Firefighters had to cut out a portion of the floor and go into the crawl space to extinguish the fire, which did not displace the family, said Danny Hudson, assistant chief for the 10th District VFD.

The Maryland State Fire Marshal's Office did not respond to either incident because the cause of the fires was

See **STORM**, Page A-11

Storm

Continued from Page A-1

immediately evident, he said.

Volunteers with the 10th District and La Plata fire departments responded to the call.

The blaze on Chicamuxen Road started in the basement and spread to the first floor after lightning struck the house, Hudson said, adding the family is displaced because of extensive damage to the structure.

Volunteers with the 10th

District, Marbury, Potomac Heights, Bryans Road, Nanjemoy and Waldorf fire departments responded to the call.

The storm also plunged 8,314 households in the dark in Charles County, said Thomas Dennison, spokesman for Southern Maryland Electric Cooperative in Hughesville.

Twelve distribution feeder lines in Southern Maryland, including eight in Charles County, were damaged during the storm, Dennison said, adding that 3,118 households in St. Mary's County and 3,428 in Calvert County

reported outages during the height of the storm.

"Anytime that we have that many feeders affected it's severe weather," he said. "It was a fast-moving storm, and it caused a great amount of damage. When we lose that amount of feeders the number of power outages really increases."

On Wednesday morning, about 200 households, mainly in the western section of Charles County, were still without power, Dennison said, adding that those outages were primarily in Nanjemoy, Marbury

and Indian Head.

"It was a violent storm, and unfortunately it caused extensive outages in our service area," he said.

The Charles County Sheriff's Office had numerous calls for downed power lines and toppled trees that

Friday, June 25, 2010 Maryland Independent Page A-11

stretched across roads, but there were no serious vehicular accidents, said Kristen Timko, spokeswoman.

Mother Nature may not be done with the area yet. With the heat index predicted to soar between 98 degrees and 104 degrees and a strong cold

front approaching, the NWS issued a severe thunderstorm watch for Thursday afternoon and evening. The storms could produce damaging wind, large hail and possibly tornadoes.

nmccnaty@somdnews.com

Article provided by Marty Brumback of Bryans Road 2 ESE
Strong thunderstorms of Tuesday, June 22

**ACON MD / DE / DC
JUNE 2010 SUMMARY**

OBSERVER	STATION COUNTY, STATE	TEMPERATURE									PEAK WIND			PRECIPITATION					SNOWFALL				OBS TIME	
		AVG MAX	AVG MIN	MEAN	MAX	DAY	MIN	DAY	MAX >=90	MAX <=32	MIN <=32	GUST	DIR	DAY	TOTAL	MAX DAY	DATE	YEAR	DAYS >=.01"	DAYS >=1"	TOTAL	MAX DAY		DATE
<i>New Castle, Delaware</i>																								
Gallagher, Gary	Bear 2 SW	87.5	64.9	76.2	99	24	52	9	13	0	0	49	NNW	24	1.15	0.49	28	20.61	5	0	0.0	0.0	72.7	2400
Legates, David	Middletown 6 N	87.5	65.6	76.6	98	24	52	8	14	0	0	33		22	0.92	0.36	9	<u>15.81</u>	7	0				2400
NWS Wilmington	New Castle Co. Apt.	87.0	66.3	76.7	98	24	53	7	13	0	0	70	WNW	24	1.83	0.71	24	20.34	4	0	0.0	0.0	72.7	2400
UofDE AG FARM DEOS***	Newark	86.0	65.7	75.9	95	24+	54	9	11	0	0	34		24	2.62	0.83	28	<u>17.92</u>	10	0				2400
U of D REC DEOS***	Townsend 4 W	85.4	65.1	75.3	94	24+	51	8	7	0	0	27		28	1.16	0.78	22	<u>17.12</u>	5	0				2400
<i>Sussex, Delaware</i>																								
NWS Georgetown	Sussex Co. Airport	88.6	67.4	78.0	97	24	56	8	18	0	0	35	SW+	6+	2.69	0.68	24	19.74	11	0				2400
U of D REC DEOS***	Georgetown 5 SW	86.9	67.1	77.0	95	24	56	8	11	0	0	32		24	<u>0.28</u>	<u>0.23</u>	28	<u>14.98</u>	2	0				2400
U of D REC DEOS***	Harbeson 8 S	85.9	66.4	76.2	95	28	54	8	10	0	0	24		6	2.64	0.82	24	<u>19.16</u>	12	0				2400
<i>Allegany, Maryland</i>																								
Latta, Greg	Frostburg	78.3	58.4	68.4	87	28	44	8+	0	0	0				5.15	1.90	6	27.07	17	2	0.0	0.0	102.7	0700
Mullins, Nate**	LaVale	83.1	64.3	73.7	95	27	48	8	5	0	0				1.38	0.66	9	19.34	8	0	0.0	0.0	78.3	2400
<i>Anne Arundel, Maryland</i>																								
Hanson, Dan	Pasadena 2 N	88.8	66.7	77.8	101	27	51	8	15	0	0	30	WNW	22	1.74	0.41	22	<u>15.33</u>	11	0	0.0	0.0		2400
Jug Bay Wetlands	Lothian	89.7	65.4	77.6	99	25+	51	8	16	0	0				1.61	0.37	15	<u>17.02</u>	11	0	0.0	0.0	52.8	0900
NWS Baltimore	BWI Airport	89.5	68.2	78.9	100	24+	56	7+	16	0	0	39	WNW	28	1.55	0.57	1	19.16	7	0	0.0	0.0	80.7	2400
Stoudt, Jeff	Laurel 2 E	87.1	69.2	78.2	98	27	57	8	13	0	0				2.41	0.88	22	19.77	8	0	0.0	0.0	88.5	2400
<i>Baltimore, Maryland</i>																								
Sharrow, Marty	Owings Mills 2 SE	85.9	65.2	75.6	98	27	53	8	9	0	0				0.37	0.23	9	16.91	3	0	0.0	0.0	97.5	2400
<i>Baltimore City, Maryland</i>																								
Manfre, Joe	Baltimore 2 SE	90.5	73.1	81.8	102	24	62	9	20	0	0				1.04	0.48	16	16.99	7	0	0.0	0.0	79.0	1800
Maryland Science Ctr	Baltimore Inner Harbor	89.7	72.3	81.0	101	24+	62	8	19	0	0				0.92	0.46	16	16.61	5	0				2400
<i>Carroll, Maryland</i>																								
Close Jr, Herb	Manchester 1 SW	85.8	62.2	74.0	97	27	46	8	8	0	0				1.64	0.92	4	17.58	9	0	0.0	0.0	94.7	2300
Hartsock, Ralph	Westminster 4 SSE	88.8	66.1	77.5	101	27	51	8	18	0	0				1.09	0.51	28	18.80	6	0	0.0	0.0	88.0	1900
Miller, Bobby	Millers 4 NE	83.0	62.6	72.8	94	27	50	8	4	0	0	45	NNW	4	2.02	1.12	5	17.98	11	1	0.0	0.0	87.6	1800
Muller, Ray	Westminster City		74.5		96	27	51	8	8	0	0	25	WNW	4	1.11	0.43	4	15.86	7	0	0.0	0.0	85.0	1900
<i>Charles, Maryland</i>																								
Brumback, Marty	Bryans Road 2 ESE	88.9	67.8	78.4	98	24+	57	8	15	0	0				3.41	0.80	12	18.61	9	0	0.0	0.0	72.6	2400/2000
<i>Frederick, Maryland</i>																								
Glass, Eric	Emmitsburg 2 SE	82.6	63.8	73.2	93	28	52	8	2	0	0				1.56	0.61	10	<u>20.94</u>	9	0	0.0	0.0	71.0	0630
<i>Garrett, Maryland</i>																								
Harvey, Rebecca	Eagle Rock																	<u>4.60</u>					98.2	0800

**ACON MD / DE / DC
JUNE 2010 SUMMARY**

OBSERVER	STATION COUNTY, STATE	TEMPERATURE									PEAK WIND			PRECIPITATION					SNOWFALL				OBS TIME			
		AVG MAX	AVG MIN	MEAN	MAX	DAY	MIN	DAY	MAX >=90	MAX <=32	MIN <=32	GUST	DIR	DAY	TOTAL	MAX DAY	DATE	YEAR	DAYS >=.01"	DAYS >=1"	TOTAL	MAX DAY		DATE	SEA- SON	
<i>Howard, Maryland</i>																										
Giannola, Rich	Laurel JHU / APL	86.1	67.2	76.7	97	27	56	8	9	0	0	37	WSW	22	1.55	0.81	28	17.31	7	0	0.0	0.0	88.3	2400		
<i>Montgomery, Maryland</i>																										
Berger, Ron	Norbeck 1 SE	85.8	66.4	76.1	96	27	52	8	8	0	0				2.34	1.05	28	18.55	10	1	0.0	0.0		2200		
Cohen, Rob	Potomac 4 N	85.4	66.9	76.2	94	24	53	8	6	0	0				2.27	0.58	28	18.36	10	0	0.0	0.0	76.9	2100		
Giannola, Rich	Olney 1 S	86.2	66.4	76.3	98	27	54	8	11	0	0				2.18	0.80	28	17.16	12	0	0.0	0.0	85.0	2400		
Holden, Richard	Clarksburg 2 ENE	84.4	65.6	75.0	96	27	53	8	5	0	0	46	NW	3	1.50	0.32	9	20.99	11	0	0.0	0.0		2400		
Roth, David	Montgomery Village 1SW	88.1	68.9	78.5	99	24+	57	8	14	0	0				2.03	1.00	28	<u>17.42</u>	9	1				2400		
Rossen, Stan	Glenmont 1 NNE	86.3	66.6	76.5	96	27	54	8	12	0	0	17	N	25	2.16	0.61	28	18.22	9	0	0.0	0.0	76.4	2400		
Scafide, Tony	Bethesda	84.7	67.8	76.3	94	24	54	8	5	0	0	15		24	3.47	1.40	16	<u>12.58</u>	13	2				2400		
Shaw, Kevin	Gaithersburg 2 WNW	86.3	66.7	76.5	97	27	54	8	10	0	0	17	NE+	17+	3.48	1.44	28	18.73	10	1	0.0	0.0	80.7	2400		
Terry, Joe	Forest Glen	89.2	66.5	77.9	99	27	53	8	18	0	0	27	WNW	6	3.20	1.04	16	19.01	12	1	0.0	0.0	75.7	2400		
<i>Prince Georges, Maryland</i>																										
Smith, Brian	Oxon Hill	87.9	68.6	78.3	98	24	60	8+	13	0	0				2.73	1.05	28	17.30	9	1	0.0	0.0	59.6	2300		
<i>St. Marys, Maryland</i>																										
Abell, Floyd	Hollywood	STATION CLOSED APRIL																							55.6	2400
Zyla, John	Ridge	88.5	70.4	79.5	100	24	61	7+	13	0	0	25	NW	3	2.92	0.68	6	22.57	12	0	0.0	0.0	45.1	2400		
<i>Washington, Maryland</i>																										
Hutto, Max	Smithsburg 1.5 SW	84.6	62.4	73.5	96	27	45	8	7	0	0	27	S	6	1.56	0.62	9	19.42	13	0	0.0	0.0	73.9	2400		
Keefer, Greg	Hagerstown 1 E	86.4	65.7	76.1	98	27	49	6	10	0	0	44	W	6	1.61	0.51	9	18.12	11	0	0.0	0.0	70.5	2400		
Vaughn, Jim	Smithsburg 2 NE	85.0	64.7	74.9	99	27	50	8	8	0	0				1.52	0.52	9	18.29	12	0	0.0	0.0	77.5	2400		
<i>Wicomico, Maryland</i>																										
NWS Salisbury	Wicomico Co. Apt	88.0	66.6	77.3	98	24	56	8	12	0	0	43	WNW	22	1.54	0.43	24	20.05	11	0	0.0	0.0	<u>2.0</u>	2400		
<i>Arlington, Virginia</i>																										
NWS Washington National	National Airport	89.8	71.3	80.6	100	24	60	8	18	0	0	55	W	22	1.87	0.79	28	13.60	10	0	0.0	0.0	56.1	2400		
<i>Loudon, Virginia</i>																										
NWS Washington Dulles	Dulles Airport	87.4	66.1	76.8	97	24+	50	8	12	0	0	44	W	14	1.29	0.70	28	18.00	7	0	0.0	0.0	73.2	2400		
Shaffer, Lance	Sterling 4 N	85.2	68.0	76.6	95	27	53	8	8	0	0				1.52	0.71	28	20.50	12	0	0.0	0.0	75.3	2400		
<i>Tucker, West Virginia</i>																										
Leshner, Dave	Davis 3 SE WV	74.5	56.5	65.5	83	28	37	8	0	0	0				3.97	0.88	7	28.05	14	0	0.0	0.0	250.9	0700		
SECTION AVERAGE*		86.1	64.9	75.5											1.92			18.86					77.4			

NOTES:

M OR UNDERLINE= MISSING DATA
 > = INCLUDED IN NEXT DAYS DATA
 ITALIC = ESTIMATED DATA

*SECTIONAL AVERAGE DOES NOT INCLUDE DATA FROM WEST VIRGINIA.

**OBSERVER FOR LAVALE IS SCOTT LOHR. DATA COMPILED BY NATE MULLINS.

*** DATA FROM DEOS (DELAWARE ENVIROMENTAL OBSERVING SYSTEM) PERMISSION GRANTED FOR USE OF DATA

*** REC= UNIVERSITY of DELAWARE RESEARCH AND EDUCATION CENTER

National Weather Service station data listed herein is preliminary and may be subject to change. The data has not been certified and cannot be used in legal actions.
 Only reports certified by the National Climatic Data Center in Asheville, NC may be used for these purposes.
 Accuracy of Data from ACON Observers not guaranteed.

GARY GALLAHER 8/9/10

ACON MD / DE / DC
JUNE 2010 DAILY TEMPERATURES

STATION	1	2	3	4	5	6	7	8	9	10	11	12	13	14	15	16	17	18	19	20	21	22	23	24	25	26	27	28	29	30	AVG	OBS TIME
BEAR 2 SW, DE GALLAHER	86 69	88 65	89 69	90 68	88 69	90 67	77 54	77 53	67 52	87 63	81 56	89 60	91 72	88 69	80 64	78 67	84 63	85 54	90 57	94 70	92 65	94 64	95 70	99 75	89 67	91 63	97 70	97 76	91 74	80 62	87.5 64.9	2400 EDT
MIDDLETOWN 6 N LEGATES	87 70	89 66	89 71	91 68	89 70	91 66	77 55	77 52	67 55	87 63	81 58	90 61	92 71	87 68	79 67	79 63	84 56	85 59	90 70	93 66	91 66	95 71	94 74	98 68	92 65	97 71	96 77	91 74	80 62	87.5 65.6	2400 EDT	
WILMINGTON , DE NWS NEW CASTLE CO APT	86 71	88 66	90 70	87 69	90 71	91 66	77 53	78 54	68 55	87 63	79 59	86 64	92 73	88 69	80 67	77 67	86 61	85 59	86 64	96 73	92 68	91 67	95 71	98 73	88 70	90 66	96 73	94 76	91 70	79 62	87.0 66.3	2400 EST
NEWARK AG FARM, DE U OF DE DEOS	86 71	88 66	89 69	89 68	88 70	91 67	74 55	75 56	67 54	85 62	80 58	89 61	90 71	84 69	80 66	79 66	81 58	84 60	90 71	92 67	90 67	93 70	92 70	95 68	86 64	90 70	95 74	93 73	88 62	78 62	86.0 65.7	2400 EDT
TOWNSEND 4 W, DE U of D REC DEOS	86 70	87 66	87 67	89 67	88 67	90 65	75 51	74 54	67 61	84 59	80 61	88 59	89 70	85 68	77 65	77 62	83 57	83 60	88 70	91 66	93 65	91 70	94 74	86 68	89 64	94 70	93 78	89 74	77 59	77 59	85.4 65.1	2400 EDT
GEORGETOWN, DE NWS SUSSEX CO APT	87 71	91 67	91 69	91 68	92 74	92 66	77 58	78 56	73 59	91 69	80 59	91 62	94 73	89 68	81 68	84 67	87 68	83 61	91 62	95 73	93 68	95 68	94 69	97 74	89 71	90 69	96 74	96 76	90 77	80 59	88.6 67.4	2400 EST
GEORGETOWN, DE U of D REC DEOS	86 70	89 68	88 69	90 68	91 75	90 67	76 59	77 56	72 69	80 60	87 62	87 60	92 74	87 68	79 68	83 67	86 58	83 61	88 72	94 67	91 66	93 66	92 68	95 73	87 70	89 68	94 71	95 76	89 58	80 59	86.9 67.1	2400 EDT
HARBESON 8 S, DE U of D REC DEOS	85 70	86 67	89 68	90 67	91 74	91 68	74 58	76 54	72 55	87 68	75 60	87 62	92 71	84 67	76 68	82 67	86 69	80 59	89 59	93 73	87 66	92 66	92 68	94 73	84 70	89 68	94 71	95 76	88 58	78 58	85.9 66.4	2400 EDT
FROSTBURG LATTA	83 62	78 57	82 62	77 62	83 64	79 63	73 52	66 44	69 44	68 53	75 53	76 55	85 63	80 65	80 64	65 62	80 51	71 52	79 59	85 60	80 60	82 60	83 64	85 66	80 57	79 58	82 58	87 70	81 62	76 49	78.3 58.4	0700 EDT
LAVALLE MULLINS**	81 67	83 59	83 67	87 66	84 70	76 65	69 48	74 56	64 57	80 57	85 70	86 72	87 70	87 67	71 67	84 68	82 66	85 56	90 61	86 66	90 66	88 67	90 69	85 68	84 64	90 63	95 63	89 77	83 70	76 56	83.1 64.3	2400 EDT
PASADENA 2 N HANSON	89 71	88 65	92 68	88 67	91 70	90 70	79 58	80 51	70 60	89 65	82 64	88 67	94 70	91 72	80 71	79 68	88 67	85 58	90 60	95 71	95 65	95 67	96 70	100 73	89 65	92 70	101 74	99 73	92 62	81 62	88.8 66.7	2400 EDT
LOTHIAN JUG BAY	91 68	88 66	89 70	92 66	89 71	92 55	91 51	80 58	81 63	72 59	89 64	85 69	91 69	94 66	90 66	82 68	83 56	88 60	84 72	92 66	95 66	95 66	95 69	95 73	99 65	99 65	> >	> >	98 72	93 65	89.7 65.4	0900 EDT
BALTIMORE NWS BWI APT	88 71	90 66	89 70	89 69	88 71	91 64	78 56	80 56	71 62	88 66	83 66	92 67	94 73	90 73	82 68	80 70	88 69	87 59	93 63	95 74	94 71	96 68	97 71	100 76	93 71	94 67	100 72	99 75	92 76	83 65	89.5 68.2	2400 EST
LAUREL 2 E STOUDT	85 73	90 68	87 70	85 69	87 73	88 66	76 59	77 57	70 63	87 67	83 63	92 69	91 74	88 74	79 71	79 69	83 69	85 60	91 65	92 74	91 72	95 70	94 72	96 79	90 69	92 73	98 75	94 74	87 64	82 64	87.1 69.2	2400 EST
OWINGS MILLS 2SE SHARROW	84 68	86 64	88 69	89 66	84 67	85 68	76 55	76 53	66 56	85 62	83 58	90 66	88 70	88 67	76 66	77 66	83 64	85 56	93 60	92 71	89 66	92 71	93 66	94 74	86 69	92 65	98 68	92 75	88 71	80 59	85.9 65.2	2400 EDT
BALTIMORE 2SE MANFRE	90 75	91 73	90 74	91 74	89 76	93 69	79 63	80 63	71 62	90 68	84 68	92 72	96 75	92 76	81 72	81 70	87 71	86 67	94 70	96 78	95 79	97 78	99 79	102 83	94 77	95 76	101 79	100 80	93 77	85 68	90.5 73.1	1800 EDT
BALT INNER HARBOR MD SCIENCE CENTER	88 74	90 72	90 73	90 72	89 76	92 69	78 62	79 64	91 68	84 68	91 71	94 84	91 75	81 76	80 72	86 70	85 67	95 66	94 70	94 69	97 77	97 77	98 77	101 82	93 76	94 75	101 77	99 77	93 67	84 67	89.7 72.3	2400 EST
MANCHESTER 1SW CLOSE	83 65	87 61	86 67	89 63	84 65	84 60	74 51	74 46	65 56	84 59	82 57	> >	> >	> >	> >	90 62	81 62	82 54	89 60	90 67	88 67	90 63	88 68	91 72	94 64	95 66	88 68	91 71	88 67	80 54	85.8 62.2	2300 EDT
WESTMINSTER 4 SSE HARTSOCK	90 69	90 64	91 70	91 68	88 67	89 66	79 58	78 51	69 58	86 61	87 60	90 66	91 71	92 69	81 67	82 67	85 66	87 58	92 62	92 71	91 68	94 67	96 72	99 77	90 68	93 65	101 68	96 76	92 73	82 60	88.8 66.1	1900 EDT
MILLERS 4NE MILLER	81 66	83 61	83 66	84 65	82 62	81 67	76 54	72 50	69 52	82 60	87 54	86 62	83 69	77 66	74 64	78 63	80 62	87 53	86 67	85 64	87 63	85 68	87 73	90 66	91 66	85 61	88 64	93 71	86 69	80 56	83.0 62.6	1800 EDT
WESTMINSTER CITY MULLER																															#### ####	1900 EDT
BRYANS ROAD 2 ESE BRUMBACK	87 71	88 66	90 68	89 67	89 72	88 66	77 59	78 57	75 62	88 68	85 62	91 67	91 71	90 71	81 69	83 71	86 68	85 59	91 66	93 73	92 69	96 68	95 69	98 75	98 71	94 67	98 69	98 78	93 74	80 62	88.9 67.8	2400 EDT
EMMITSBURG 2 SE GLASS	87 69	81 62	83 63	83 66	85 66	81 70	80 57	72 52	74 55	66 58	82 59	87 60	85 68	82 68	76 65	77 66	79 66	80 56	86 57	85 63	84 65	88 67	89 75	91 68	84 62	86 65	93 65	88 71	85 58	85 58	82.6 63.8	0630 EDT

ACON MD / DE / DC
JUNE 2010 DAILY TEMPERATURES

STATION	1	2	3	4	5	6	7	8	9	10	11	12	13	14	15	16	17	18	19	20	21	22	23	24	25	26	27	28	29	30	AVG	OBS TIME	
EAGLE ROCK HARVEY																																	0800 EST
LAUREL JHU / APL GIANNOLA	85 71	88 67	88 69	90 68	86 70	88 65	74 57	74 56	69 61	85 65	82 61	91 67	89 72	87 72	79 68	79 68	81 68	85 59	90 62	88 74	88 70	93 67	92 73	95 78	88 70	91 65	97 69	94 72	88 73	79 61	86.1 67.2	2400 EDT	
NORBECK 1 SE BERGER	83 70	88 64	88 69	88 67	84 69	85 68	75 56	77 52	68 60	86 63	86 64	91 68	89 72	87 71	78 67	76 68	83 67	85 57	89 63	90 72	89 68	91 67	92 70	94 73	88 69	91 65	96 68	93 72	86 71	78 61	85.8 66.4	2200 EDT	
POTOMAC 4N COHEN	83 71	86 65	88 69	89 67	86 66	85 69	74 59	76 53	68 61	87 63	85 60	90 67	89 64	86 73	77 68	76 66	81 63	84 63	89 72	88 71	88 67	92 73	92 73	94 69	87 66	89 66	94 68	93 77	88 73	79 64	85.4 66.9	2100 EDT	
OLNEY 1 S GIANNOLA	86 70	88 65	88 65	87 67	86 69	84 66	76 57	77 54	68 61	86 63	84 61	90 67	85 72	85 71	78 67	77 68	82 66	84 58	91 64	92 72	90 67	93 68	91 69	94 73	88 68	92 67	98 70	93 74	87 72	80 61	86.2 66.4	2400 EDT	
CLARKSBURG 2ENE HOLDEN	82 68	85 65	86 66	87 66	83 68	84 63	73 56	75 53	67 58	84 62	81 59	89 64	88 71	84 67	78 67	76 66	81 67	82 57	89 64	88 71	87 68	91 72	92 70	94 73	86 68	89 68	96 70	90 73	88 69	78 59	84.4 65.6	2400 EST	
MONTGOMERY VILLAGE ROTH 1SW	85 72	90 68	91 74	92 70	88 69	86 60	75 57	79 63	69 66	88 63	86 63	92 70	91 75	88 74	82 67	78 69	86 62	87 66	93 76	92 69	94 70	92 71	95 76	99 72	99 67	89 76	87 67	99 75	96 61	83 62	88.1 68.9	2400 EDT	
GLENMONT 1NNE ROSSEN	85 71	90 66	89 69	91 68	86 70	86 64	75 58	77 54	68 60	86 64	84 60	93 66	90 73	87 71	77 68	77 68	81 67	85 58	92 63	90 71	89 67	94 69	90 73	95 69	89 66	91 66	96 68	93 75	84 73	80 62	86.3 66.6	2400 EST	
BETHESDA SCAFIDE	83 71	86 66	86 69	88 68	86 69	86 69	74 59	76 54	70 62	85 65	83 64	87 68	88 72	87 74	78 68	77 68	80 67	82 60	87 67	88 72	87 69	90 70	91 75	94 72	86 69	89 70	93 73	91 73	86 73	78 63	84.7 67.8	2400 EDT	
GAITHERSBURG 2WNW SHAW	86 70	89 65	87 69	89 67	85 68	87 67	75 58	78 54	68 61	86 63	86 62	90 68	89 72	87 71	77 67	78 69	81 66	85 59	90 64	90 72	90 68	93 67	93 69	94 73	88 70	91 66	97 69	91 73	89 72	82 62	86.3 66.7	2400 EDT	
FOREST GLEN TERRY	88 70	91 65	92 68	91 68	90 68	88 64	79 57	81 53	71 62	89 64	88 62	93 68	92 72	91 71	83 67	80 66	85 57	87 64	93 72	93 67	92 68	94 70	95 73	98 69	91 66	93 69	99 73	95 73	92 73	83 63	89.2 66.5	2400 EDT	
OXON HILL SMITH	84 71	89 67	89 68	89 68	89 72	88 70	77 61	78 60	75 64	87 68	85 66	92 65	91 72	87 74	80 69	82 69	85 61	85 60	91 66	92 74	91 70	95 69	94 70	98 75	91 73	93 69	96 71	93 73	91 78	80 65	87.9 68.6	2300 EDT	
HOLLYWOOD ABELL																																	2359 EDT
RIDGE ZYLA	89 71	87 70	89 69	85 67	91 75	91 65	75 61	78 61	77 62	89 71	83 69	88 69	92 74	93 73	85 72	84 72	88 73	82 63	89 67	93 74	92 74	92 72	95 74	100 74	89 74	92 73	99 76	99 78	93 76	80 64	88.5 70.4	2400 EDT	
SMITHSBURG 1.5 SW HUTTO	83 65	87 58	86 67	88 64	83 66	80 63	74 56	77 45	68 56	84 58	84 55	91 63	87 70	84 65	74 63	82 68	79 63	84 53	90 59	88 67	88 60	90 64	88 68	90 70	86 62	90 60	96 64	89 75	84 69	80 55	84.6 62.4	2400 EDT	
HAGERSTOWN 1E KEEFER	86 70	88 62	87 69	89 68	86 68	83 65	76 58	78 49	69 59	87 61	83 58	91 67	90 73	86 69	74 66	81 69	81 65	85 57	91 62	90 71	89 65	93 68	95 71	96 74	87 69	92 63	98 69	92 77	88 70	81 58	86.4 65.7	2400 EDT	
SMITHSBURG 2 NE VAUGHN	84 67	86 62	86 69	88 66	84 66	81 63	72 50	74 56	69 63	83 60	84 68	92 68	91 72	85 67	74 64	82 66	78 66	83 56	90 63	87 69	88 63	93 67	95 73	95 74	85 66	88 64	99 67	91 74	85 68	78 56	85.0 64.7	2400 EDT	
SALISBURY NWS WICOMICO CO APT	84 68	88 66	87 67	89 67	90 75	92 67	77 57	77 56	76 57	88 67	83 62	88 60	92 73	89 70	82 69	85 68	88 68	83 58	89 59	94 70	92 68	94 66	95 68	98 72	88 69	90 68	96 70	97 76	90 76	79 60	88.0 66.6	2400 EST	
WASH NATIONAL NWS ASOS	87 73	89 71	92 71	89 70	91 73	91 69	78 63	79 60	76 66	90 70	86 67	93 69	94 73	91 75	82 72	82 71	87 72	87 65	93 70	95 76	93 76	96 73	97 74	100 78	92 76	95 73	99 75	97 73	92 78	81 67	89.8 71.3	2400 EST	
WASH DULLES NWS ASOS	86 70	87 62	89 68	89 67	89 66	87 66	75 58	77 50	73 61	88 64	85 59	91 68	91 71	90 72	78 68	80 71	84 67	84 58	91 63	91 71	89 66	94 66	92 73	95 67	98 73	88 65	90 67	96 73	97 74	90 63	81 63	87.4 66.1	2400 EST
STERLING 4 N SHAFFER	83 71	85 66	85 72	86 69	84 69	83 68	74 59	75 53	70 61	86 64	83 61	89 67	89 73	86 73	77 70	78 71	87 68	82 61	90 65	90 74	89 68	91 68	92 70	93 75	86 71	90 67	95 70	93 76	87 75	79 64	85.2 68.0	2400 EDT	
DAVIS 3 SE WV LESHNER	78 61	72 59	77 57	73 59	78 60	72 61	68 50	60 37	66 40	63 55	71 51	75 53	76 63	73 63	75 63	73 63	74 56	71 54	76 55	78 55	80 62	78 57	80 60	79 60	78 52	78 58	78 61	83 63	77 60	75 46	74.5 56.5	0700 EDT	

**ACON MD / DE / DC
JUNE 2010 DAILY PRECIPITATION**

STATION	1	2	3	4	5	6	7	8	9	10	11	12	13	14	15	16	17	18	19	20	21	22	23	24	25	26	27	28	29	30	TOTAL	OBS TIME	
BEAR 2 SW, DE GALLAHER	T		T			T			0.43				0.02		T	0.02						0.19		T					0.49			1.15 0.0	2400 EDT
MIDDLETOWN 6 N LEGATES						0.01			0.36				0.07			0.04						0.26		0.06					0.12			0.92	2400 EDT
WILMINGTON, DE NWS NEW CASTLE CO APT	T				T	T			0.36				T		T							0.32		0.71		T	0.44				1.83 0.0	2400 EST	
NEWARK AG FARM, DE U OF DE DEOS	0.04								0.45	0.01			0.12			0.03						0.77	0.01	0.35				0.83	0.01		2.62	2400 EDT	
TOWNSEND 4 W, DE U of D REC DEOS						0.02			0.17							0.18						0.78						0.01			1.16	2400 EDT	
GEORGETOWN, DE NWS SUSSEX CO APT	0.02		0.10		T	0.11			0.02				0.06			0.06						0.66	0.58	0.68			0.38	0.02	T	-	2.69	2400 EST	
GEORGETOWN, DE U of D REC DEOS	M	M	BROKEN WIRE ON THE TIPPNG BUCKET										M	M	M	M	M	M	M	M	M	M	M	M	M			0.23	0.05		0.28	2400 EDT	
HARBESON 8 S, DE U of D REC DEOS	0.02		0.07			0.02			0.04				0.23			0.06						0.39	0.65	0.82			0.28	0.04	0.02		2.64	2400 EDT	
FROSTBURG LATTA	0.05			1.60	T	1.90	0.20	0.01	0.11	0.57	0.01		T	0.01	0.05	0.27	0.10				0.05		0.01	0.03	0.09			0.09			5.15 0.0	0700 EDT	
LAVALE MULLINS**			0.03		0.21	0.03			0.66						0.27	0.13						0.03		0.02							1.38 0.0	2400 EDT	
PASADENA 2N HANSON	0.37		0.13	0.01		0.09			0.08	0.01						0.07	0.01					0.41		0.16			0.40				1.74 0.0	2400 EDT	
LOTHIAN JUG BAY		0.01		0.15			0.25	0.01		0.02			0.17		0.37	0.07	0.01							0.25				0.30			1.61 0.0	0900 EDT	
BWI NWS ASOS	0.57		0.23		T	0.06			0.11	0.02		T	T		T	0.05						T					0.51				1.55 0.0	2400 EST	
LAUREL 2 E STOUDT			0.25			0.20			0.11	0.02		T			0.01	0.17						0.88		T			0.77				2.41 0.0	2400 EST	
OWINGS MILLS 2SE SHARROW	T		T	T		T			0.23			T	T	0.03	T	0.11											T				0.37 0.0	2400 EDT	
BALTIMORE 2SE MANFRE	0.09		0.10		T	0.08			0.17	0.02					T	0.48											0.10				1.04 0.0	1800 EDT	
BALT INNER HARBOR MD SCIENCE CENTER	0.10		0.03						0.21							0.46												0.12				0.92 -	2400 EST
MANCHESTER 1SW CLOSE	0.02		T	0.92	0.02	0.07	0.01		0.33		T	>	>	>	>	0.04						T						0.21	0.02			1.64 0.0	2300 EDT
WESTMINSTER 4 SSE HARTSOCK				T	T	0.02			0.32	0.05				0.02	T	0.17											0.51				1.09 0.0	1900 EDT	
MILLERS 4NE MILLER	T	0.01		0.09	1.12	0.02			0.32	0.02			0.03	T	0.01	0.09						T	T	0.19			0.12	T			2.02 0.0	1800 EDT	
WESTMINSTER CITY MULLER			T	0.43	0.03	0.01			0.34						0.02	0.23											0.05				1.11 0.0	1900 EDT	
BRYANS ROAD 2 ESE BRUMBACK	0.75		0.77			0.70			0.02	0.02		0.80			0.12							0.08					0.15				3.41 0.0	2000 EDT	
EMMITSBURG 2 SE GLASS		0.04			0.50	0.02	0.01			0.61						0.04	0.16				0.04							0.14			1.56 0.0	0630 EDT	

**ACON MD / DE / DC
JUNE 2010 DAILY PRECIPITATION**

STATION	1	2	3	4	5	6	7	8	9	10	11	12	13	14	15	16	17	18	19	20	21	22	23	24	25	26	27	28	29	30	TOTAL	OBS TIME
EAGLE ROCK HARVEY																															0800 EST	
LAUREL JHU / APL GIANNOLA			0.18			0.16			0.12	0.08					T	0.03						0.17						0.81			1.55 0.0	2400 EDT
NORBECK 1 SE BERGER	T		0.04			0.31			0.15	0.01			0.01	0.21	T	0.10						0.39					1.05	0.07		2.34 0.0	2200 EDT	
POTOMAC 4N COHEN	0.06	0.16	0.08	T	T	0.57			0.14			T		0.21	T	0.23						0.21				T	0.58	0.03		2.27 0.0	2100 EDT	
OLNEY 1 S GIANNOLA	0.02		0.05	0.01	T	0.27			0.16	0.01		T	T	0.05	0.01	0.05						0.68				0.07	0.80			2.18 0.0	2400 EDT	
CLARKSBURG 2ENE HOLDEN	0.10		0.25	T	T	0.15			0.32	0.07		0.05		0.14	0.04	0.12					T			0.02			0.24			1.50 0.0	2400 EST	
MONTGOMERY VILLAGE ROTH 1SW			0.05		0.01	0.24			0.37						0.02	0.01						0.13				0.20	1.00			2.03 0.0	2400 EDT	
GLENMONT 1NNE ROSSEN	0.02		0.05	0.01		0.43	T.		0.12			T.		0.09	T.	0.45						0.38		T.		T.	0.61			2.16 0.0	2400 EST	
BETHESDA SCAFIDE	0.23		0.07	0.02	0.01	0.23			0.06			0.01		0.14	0.02	1.40						0.24				0.01	1.03			3.47 -	2400 EDT	
GAITHERSBURG 2WNW SHAW	T		0.06		T	0.64			0.28				0.08	0.15	0.03	0.04						0.11				0.65	1.44			3.48 0.0	2400 EDT	
FOREST GLEN TERRY	0.21		0.08	0.03	T	0.40			0.07			0.01		0.13	0.01	1.04						0.23		T		0.01	0.98			3.20 0.0	2400 EDT	
OXON HILL SMITH	0.28		0.68			0.11			0.04	0.07		0.03		0.42	T							0.05					1.05		T	2.73 0.0	2300 EDT	
HOLLYWOOD ABELL																															2359 EDT	
RIDGE ZYLA	0.68		0.60	0.03		0.68						0.04		0.03		0.12	0.01							0.10			0.10	0.15	0.38	2.92 0.0	2400 EDT	
SMITHSBURG 1.5 SW HUTTO	0.02		0.02		0.10	0.02			0.62	0.09		0.02	0.01	0.02	0.11	0.19					0.03						0.31			1.56 0.0	2400 EDT	
HAGERSTOWN 1E KEEFER			0.01		0.09	0.02			0.51			0.23		0.18	0.08	0.36			0.01	0.01				T			0.11			1.61 0.0	2400 EDT	
SMITHSBURG 2 NE VAUGHN	0.01		0.01	0.16	0.09	0.03			0.52	0.19		0.13			0.02	0.19					0.01						0.16			1.52 0.0	2400 EDT	
SALISBURY NWS WICOMICO CO APT	0.18		0.13		T	0.03			0.02				0.02	0.04		T					0.12	0.16	0.43				0.38		0.03	1.54 0.0	2400 EST	
WASH NATIONAL NWS ASOS	0.06		0.33			0.03			0.06	0.05		T		0.27	0.01	0.02						0.25		T			0.79			1.87 0.0	2400 EST	
WASH DULLES NWS ASOS	T		0.07	0.01	T	T	T		0.06			T	T	0.30	T	0.09							T	T			0.06	0.70			1.29 0.0	2400 EST
STERLING 4 N SHAFFER	0.08		0.07		0.02	0.07	0.01		0.14			0.02	0.07	0.01	T	0.15								T			0.17	0.71			1.52 0.0	2400 EDT
DAVIS 3 SE WV LESHAR	0.49	0.02		0.15		0.31	0.88		0.12	0.61			0.80	T		0.21	0.11						0.03	0.14	0.06			0.04			3.97 0.0	0700 EDT