



<http://www.jhuapl.edu/weather/education/ACONdata.html>

ATLANTIC COAST OBSERVER NETWORK, MD / DE / DC CHAPTER WITH DATA FROM NEARBY AREAS

THREE FACE MONTH: COLD AND WINDY, THEN MILD, AND FINALLY COLD WITH SNOW

January's temperatures averaged a degree above normal while precipitation was an inch below normal. Most of the months snow fell on the last weekend of the month. Temperature extremes were typical for January. There was only one sub zero temperature reading and two daily snowfall totals over 7.5" this month among all of the stations in Maryland and Delaware.

A cold front that crossed the region on New Years day ushered in cold, windy conditions which would last for the first 12 days. Winds blew unabated from the west to northwest for the first week. 40+ MPH wind gusts was common on the 2nd and 3rd. Snow flurries were common especially over central and western Maryland. Temperatures failed to rise above 40° from the 2nd thru the 13th.

The first snowfall event occurred on the 8th. Amounts were generally in the one to two inch range except in Garrett County Maryland and Tucker County West Virginia where 6 inches fell. 3.0" fell in Ridge, St Marys County.

The "January Thaw" began on the 14th and lasted through the 28th. 50 degree plus readings occurred on 6 or 7 days during this period. Minimum temperatures fell below or to slightly above freezing on a majority of the days during the "thaw".

Two rainfall events occurred during the "January Thaw." The first rain event occurred on the 17th. Rainfall amounts were generally around three quarters of an inch except on the Delmarva Peninsula where amounts averaged 1 1/2 inches and in southern St. Marys County where John Zyla of Ridge reported 1.49" along with a thunderstorm.

The second rainfall event occurred on the 24th and 25th. Amounts were the heaviest in Washington County where over 2 inches fell. Jim Vaughn of Smithsburg 2 NE reported 2.79" along with a peak wind gust of 61 MPH from the south along with sustained 45+ mph winds for 8 consecutive hours. Both Jim Vaughn and Greg Keefer of Hagerstown 1E reported

widespread flooding of small streams, fields, and low lying roads. Temperatures rose into the 60's for the only time this month on the 25th. Joe Manfre of Baltimore 2 SE reported 68°

Weather forecasting is not an exact science. A storm, which was forecasted to only bring light snow to the southern portion of the region, moved further north than forecasted and brought with it the heaviest snowfall of the month on the 30th. The snow was very dry and fluffy. The heaviest amounts fell in St. Marys County where John Zyla of Ridge reported 15.2" and Floyd Abell of Hollywood 11.8". Amounts decreased to less than 3 inches in extreme northern Maryland. Temperatures during the event were in the mid to upper teens.

As a result of the fresh snow cover, light winds, and a clear sky the temperatures dropped below the teens across most of the region on the morning of the 31st.

EXTREMES REPORTED BY

ACON OBSERVERS

MAXIMUM TEMPERATURE

Baltimore 2 SE	68
Jug Bay Wetlands	66
Bryans Road 2 ESE	66
Forest Glen	66
Oxon Hill	66
Hollywood	66

MINIMUM TEMPERATURE

Davis 3 SE WV	-5
Eagle Rock	-4
Frostburg	1
Smithsburg 1.5 SW	1

WARMEST AVG. TEMP.

Baltimore 2 SE	35.8
Hollywood	35.0
Ridge	35.0

COLDEST AVG. TEMP.

Davis 3 SE WV	19.3
Eagle Rock	21.2
Frostburg	22.9

MAXIMUM PRECIPITATION

Davis 3 SE WV	6.31
Eagle Rock	4.60
Ridge	4.12

MINIMUM PRECIPITATION

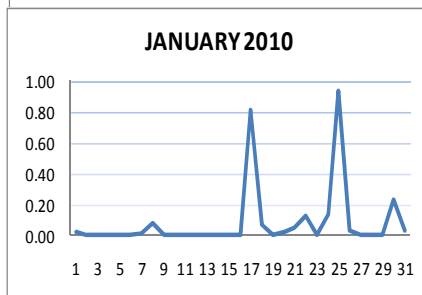
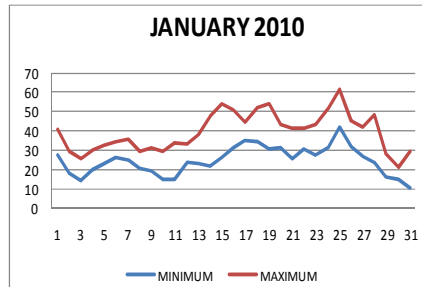
Olney 1 S	1.87
Glenmont 1 NNE	1.87
Oxon Hill	1.87

MAXIMUM SNOWFALL

Davis 3 SE WV	68.7
Eagle Rock	40.5
Ridge	18.2

MINIMUM SNOWFALL

Smithsburg 2 NE	3.9
Hagerstown 1 E	4.0
Smithsburg 1.5 SW	4.2



ACON MD/DE Network

Daily average temperatures and precipitation based on observation times, not calendar days.

OBSERVER COMMENTS FOR JANUARY 2010

Gary Gallaher of Bear 2 SW, DE

2nd to 6th - Persistent winds from the West to Northwest peaking at 45 mph averaged nearly 13 mph for the period.

25th - Heavy AM rain. 60°+ temperatures mid day.

30th - Very dry "squeaky" snow. Temperature remained in the mid teens during the storm.

Greg Latta of Frostburg

1st & 22nd - Glaze.

Nate Mullins of LaVale

1st to 12th - Prolonged period of sub-freezing temperatures, wind, and cold.

28th - Cold front moved through bringing locally damaging west wind gusts to 40+ mph.

30th - Surprised fluffy snow with 0.09" liquid from a storm system to the south. No snow fell 20 miles to the north.

Jeff Stoudt of Laurel 2 E

7th to 8th - Light snow late evening on the 7th continued till dawn of the 8th.

30th - Fluffy snow between 0900 and 2100.

Marty Sharrow of Owings Mills

3rd - Partly sunny, windy, and very cold.

30th - Surprise snowstorm, bitter cold.

31st - Azure blue skies and cold.

Joe Manfre of Baltimore 2SE

2nd - Variable clouds, cold, very windy.

8th - Light snow until early morning.

25th - Cloudy, warm, occasional rain.

Ralph Hartsock of Westminster 4 SSE

1st - Overnight freezing rain.

3rd - Very windy, bitter cold, sunny, late flurries.

17th - All day soaking rain.

19th - Very frosty morning.

25th - High winds, flooding and warm temps. Clearing late.

30th - Daytime temperature 14°, very cold.

Bobby Miller of Millers 4 NE

1st - AM freezing drizzle, late afternoon snow pellet shower.

14th - Some AM frost, nearly 100% sunshine, mildest day since 12/25/09.

19th - Heavy AM frost.

Ray Muller of Westminster City

24th & 25th - Deep low produces 1.03" of rain, low barometer of 998 MB and wind gusts of 35 knots from the west.

31st - Very cold morning, 9° at 0600.

Marty Brumback of Bryans Road 2 ESE

22nd - Rain and ice pellets morning and early afternoon.

Eric Glass of Emmitsburg 2 SE

1st - Light ground fog, icy, cloudy.

22nd - Light sleet off and on.

25th - Heavy and steady rain, windy.

Rich Giannola of JHU/APL

2nd - Peak wind gust 44 MPH NW @ 1:35 PM

3rd - Peak wind gust 46 mph WNW @ 1:22 PM

21st - Evening sleet changing to rain.

Rob Cohen of Potomac 4 N

The 8.0" of snow is the most for January since 2005.

20th - Brief rain / sleet pre-dawn.

Rich Giannola of Olney 1 S

30th - Very powdery snow. Snow / rain = 19.4 to 1.

31st - Strong early morning radiation cooling with the snowpack.

Richard Holden of Clarksburg 2 ENE

21st - Moderate sleet, light freezing rain.

22nd - Light freezing rain, moderate sleet, light snow.

30th - Moderate snow, light snow pellets.

Stan Rossen of Glenmont 1 NNE

I have rarely seen the wind so persistent here - particularly at night. During the first dozen days of the month (once it picked up on the 1st) the wind rarely went calm for even an hour at a time. At this valley location the wind is usually calm all night on most nights.

Kevin Shaw of Gaithersburg 2 WNW

26th - Cloudy, colder, light afternoon rain / snow / snow pellet showers.

30th - Daily record low maximum temperature of 21°.

30th - Cloudy, very cold, snow from about 9 AM to 10 PM.

Joe Terry of Forest Glen

3rd - Extremely windy, highest gust since Dec 31, 2008.

30th - Very dry snow, consistently 17:1 ratio. Temps remained in mid to upper teens during the entire storm.

Brian Smith of Oxon Hill

13th - There are still small snow piles around from the Dec 18-19 storm!

Floyd Abell of Hollywood

8th - Early AM snow them fair.

17th - Rainy day, foggy at times.

30th - Snowy day.

John Zyla of Ridge

17th - Thunderstorm, dense PM fog.

30th & 31st - 14.2" of snow from 6 AM of the 30th to 4 AM of the 31st.

Max Hutto of Smithsburg 1.5 SW

21st - Late snow, sleet, freezing rain.

25th - Much warmer, very windy. Heavy rain overnight into mid day. Event total 2.90".

Greg Keefer of Hagerstown 1 E

7th - Temperatures briefly rose above freezing for the first time in 140 hours today for 2 hours.

25th - Heavy rain and strong SE winds overnight gusted to 45 MPH. Flooding was reported in rivers, streams and roads across the area.

Lance Shaffer of Sterling 4 N VA

2nd - Gusty winds.

Dave Leshner of Davis 3 SE WV

Snow depth ranged from 5" on the 25th to 31" on the 9th and 10th.

Compiled by Gary Gallaher, MD/DE ACON Data Collector and Report Writer, from data received from dedicated observers. Without your observations each month this report will not be possible.