



<http://www.jhuapl.edu/weather/education/ACONdata.html>

ATLANTIC COAST OBSERVER NETWORK, MD / DE / DC CHAPTER WITH DATA FROM NEARBY AREAS

COLD, DRY MONTH WITH THE HEAVIEST SNOW IN THE EXTREME EASTERN AREAS

December's temperatures averaged below normal for the first month since February. Below is an excerpt from Jeff Stoudt's report:

"December began and ended with half days of mild temperatures, even though cold prevailed in between except for a mild spike on the 12th. Although cold was persistent, it was never severe. Persistent winds enhanced the feeling of the chill. Even though mildness held a very small minority, it accompanied the great majority of the precipitation resulting in rain from two storms. All other precipitation fell as snow, but was all on the light side."

The snow event of the 16th was the only snow event to affect the entire region. Amounts from this event ranged upwards to 2 inches. **John Zyla of Ridge** observed the greatest amount of 3.2" which became a common theme for the month. A storm the day after Christmas deposited nearly a foot of snow along the coast but not at any ACON locations. According to the National Weather Service Wallops Island VA had 10 inches, Selbyville DE over 11 inches, Philadelphia PA 12 inches, and Atlantic City NJ 20 inches. **John Zyla of Ridge** again observed the greatest amount of 4.9". In the West Virginia mountains, just west of Garrett County Maryland, **Dave Leshner of Davis 3 SE WV** reported snow fell on all but four days.

December began wet as a storm that moved in on November 30th dumped upwards of an inch of rain east of Carroll County and upwards of 2 inches plus westwards with temperatures peaking in the 50's and 60's. **Greg Latta of Frostburg** reported 2.52", **Greg Keefer of Hagerstown 1 E** 2.17" and **Bobby Miller of Millers 4 NE** 1.81". Cold air moved into the region in the wake of the storm during the PM hours of the 1st and remained unabated except for the 12th until after Christmas when a slow warming trend set in on the 27th. To show how persistent

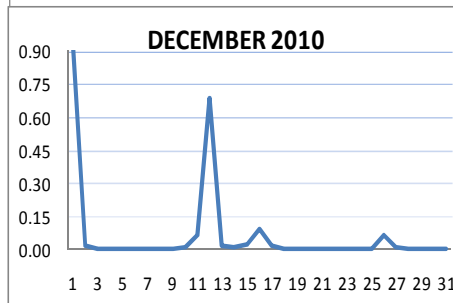
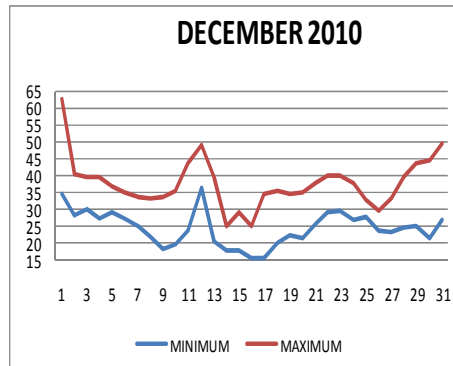
the cold was NWS Washington National only recorded two days which the temperature rose to 50° or higher. This was the fewest number of days since 1942.

The only other significant rain event occurred on the 12th. Rainfall amounts were generally in the 3/4 to 1 inch range.

The coldest period occurred from the 14th to the 16th when temperatures remained below freezing at all but four ACON stations, all on the 15th. The only single digit readings occurred during the middle of the month.

Christmas was cold with some light snow in advance of the storm of the 26th / 27th. The storm, which bombed off

Continued on Page 3



ACON MD/DE Network

Daily average temperatures and precipitation based on observation times, not calendar days.

EXTREMES REPORTED BY

ACON OBSERVERS MAXIMUM TEMPERATURE

Townsend 4 W DE DEOS	66
Middletown 6 N DE	65
Georgetown 5 SW DE DEOS	65
Harbeson 8 S DE DEOS	65
Baltimore 2 SE	65

MINIMUM TEMPERATURE

Davis 3 SE WV	-3
Frostburg	7
Smithsburg 1.5 SW	9
Smithsburg 2 NE	9

WARMEST AVG. TEMP.

Baltimore 2 SE	34.9
Ridge	33.6
Oxon Hill	32.6

COLDEST AVG. TEMP.

Davis 3 SE WV	16.9
Frostburg	21.7
Smithsburg 2 NE	27.1

MAXIMUM PRECIPITATION

Davis 3 SE WV	4.30
Frostburg	2.98
Millers 4 NE	2.87
Ridge	2.70

MINIMUM PRECIPITATION

Gaithersburg 2 WNW	1.55
Laurel JHU/APL	1.56
Clarksburg 2 ENE	1.61

MAXIMUM SNOWFALL

Davis 3 SE WV	71.0
Frostburg	14.0
Ridge	9.3

MINIMUM SNOWFALL

Smithsburg 2 NE	1.2
Smithsburg 1.5 SW	1.3
Hagerstown 1 E	1.3

OBSERVER COMMENTS FOR DECEMBER 2010

Gary Gallaher of Bear 2 SW, DE

Cold, windy month. Windiest December since wind records began in 1990. Temperatures 50° or above for only 22 hours.

26th-27th - On the western edge of a snowstorm which dumped 12.4" on Philadelphia, PA. 3.5" fell here.

27th - Very windy in the wake of the snowstorm. PWG 53 mph. Average daily wind speed of 17.8 mph made this the second windiest day ever in 21 years of wind records.

Greg Latta of Frostburg

2nd - Sleet during the previous 24 hours ending at obs. time.

2nd, 12th, & 13th - Glaze reported during the previous 24 hours ending at observation time.

Nate Mullins of LaVale

1st - Heavy AM rain, brief sleet, strong winds. Storm total 2.73" (1 1/30—12/1).

14th - Record low max high 19°. Old record 20° set in 1958.

16th - Snow showers though out the day.

17th - Tied record low max of 21° set in 1958.

Jeff Stoudt of Laurel 2 E

10th - Early afternoon flurries, first snow of the season.

12th - Periods of rain till early evening.

16th - Light snow from late AM till dusk.

Marty Sharrow of Owings Mills

1st - Wind swept rain. PM clearing and colder.

4th - Good deal of clouds and quite chilly.

14th - Mostly cloudy, very windy and frigid.

26th - Cold with light snow much of the day.

Joe Manfre of Baltimore 2SE

1st - Rain till noon, PM partly cloudy, very windy and colder.

24th - Partly cloudy, cold, breezy until noon.

31st - Variable clouds, mild.

Herb Close of Manchester 1 SW

Third coldest December in 22 years of records here.

Ralph Hartsock of Westminster 4 SSE

1st - Tornado watch, flood watch, and wind advisory.

10th - Mid day snow, flash freeze on roads.

15th - Bitter cold, windy, sunny.

29th & 30th - Partly cloudy, milder.

Ray Muller of Westminster City

1st - 1.54" of rain in 24 hours ending at 1700.

12th - 1.04" of rain.

Eric Glass of Emmitsburg 2 SE

1st - Blowing rain, windy, warm and blustery at obs time.

15th - Clear, sunny, very windy and cold at obs time.

27th - Thin clouds, very windy and cold at obs time.

Rob Cohen of Potomac 4 N

Third coldest December behind 1989 and 2000.

3rd - Very light snow flurry.

12th - AM fog.

13th - Windy, temperatures fall to the 20's late AM.

Rich Giannola of Olney 1 S

1st - Strong cold FROPA 9-10 AM including a 14° drop from 9:15-9:30AM. Wide directional change in peak wind gusts from SSE 35 mph at 6:42AM to WNW 38 mph at 11:40AM.

9th - Monthly maximum barometric pressure 30.37".

12th - Monthly minimum barometric pressure 29.20".

Richard Holden of Clarksburg 2 ENE

Peak wind gusts 40 mph or greater on the: 1st (40), 6th (40), 13th (47), 14th (45), 15th (41), 23rd (41), 27th (50), and 28th (40).

Stan Rossen of Glenmont 1 NNE

1st - The only time that I noted that the rain became heavy was the period surrounding the passage of the strong cold front at 9:06 A.M. At that time I noted the wind shifting and the temp. start to drop. In the next hour the temp. fell from the high of 63° to 46°. It continued down to 42° around noon.

26th - Snow began very lightly shortly before 11:30 A.M. in this bust of a storm here and remained little more than flurries through the afternoon. It was a breezy day.

Kevin Shaw of Gaithersburg 2 WNW

December was my 5th driest in 32 years with a record low amount of only 5 days with measurable precipitation days (old record was 6 days in 1978 and 1988). Temperature wise it tied 1985 for the 5th coldest.

5th - Cloudy, cold, blustery at times.

10th - Cloudy, light snow mid-day.

31st - Sunny, high clouds, mild.

Joe Terry of Forest Glen

Second coldest December and windiest month in 16 years of station history. Only 5 days had a mean wind direction with a southerly component.

Wes Gleason of Hollywood 3 ENE

16th - Snow 1000 to 1530 hours.

John Zyla of Ridge

Snow on the ground from the 16th to the 31st.

11th - Heavy AM frost.

26th - All day snow, 4.7".

Max Hutto of Smithsburg 1.5 SW

12th - Overnight fog/freezing rain then rain most of day (0.41"), Little temp change, Breezy.

17th - Very cold AM, Partly cloudy, Slightly warmer PM, Breezy.

Greg Keefer of Hagerstown 1 E

10th - Quick burst of snow and wind between 10 AM and 11 AM produced 0.1". Lots of accidents as roads quickly turned to ice.

14th - Windy and very cold with snow flurries. NW winds gusting to 40 mph. Wind chills in single digits all day.

Jim Vaughn of Smithsburg 2 NE

Fourth coldest December. Temps below 32° everyday.

16th - Record low min of 9°. Old record was 10° in 1989.

Lance Schaffer of Sterling 4 N

23rd - Gusty winds today.

Dave Leshner of Davis 3 SE, WV

Measurable snow on the ground at obs time from the 2nd to the 31st.

27th - December maximum snow depth 18".

Compiled by Gary Gallaher, MD/DE ACON Data Collector and Report Writer, from data received from dedicated observers. Without your observations each month this report will not be possible.

MARYLAND / DELAWARE / DISTRICT OF COLUMBIA DECEMBER 2010 ACON

Continued from page 1

the Mid Atlantic coast, brought winds upwards of 60+ MPH on the 27th blowing and drifting any snow that fell. Temperatures failed to rise above freezing from Christmas to the 27th at many stations. Afterwards temperatures rose into the 40's from the 28th to the 30th and to near or above 50° on New Years Eve.

SNOWFALL MAP OF THE STORM THAT AFFECTED THE COASTAL SECTIONS OF MARYLAND AND DELAWARE FROM THE 25th TO THE 27th

