



<http://www.jhuapl.edu/weather/education/ACONdata.html>

ATLANTIC COAST OBSERVER NETWORK, MD / DE / DC CHAPTER WITH DATA FROM NEARBY AREAS

MID MONTH NOR'EASTERS BRING COLD, WET, RAW CONDITIONS AND SOME SNOW

October was a cool, wet month. Almost all the months precipitation fell during three events after a dry first two weeks. Some snow fell in North Central and Western Maryland.

The most memorable event this month were the back to back nor'easters between the 15th and 18th. Daily maximum temperatures, which failed to rise out of the 40's east of the mountains, set daily records for the coldest maximums at NWS stations. Some ACON observers also reported daily record minimum maximums. Temperatures failed to rise out of the 30's in Western Maryland. Wet snow was reported during the pre-dawn hours of the 18th in Carroll County. Measurable snowfall was reported by the following observers east of the mountains: **Herb Close of Manchester 1 SW 0.4"**, **Bobby Miller of Millers 4 NE 0.3"**, **Ralph Hartsock of Westminster 4 SSE 0.1"**. In Baltimore County **Marty Sharrow of Owings Mills 2 SE** measured 0.1". Snow fell as far south as **Clarksburg 2 ENE** in Montgomery County where **Richard Holden** reported a trace and in the Western Maryland mountains where **Rebecca Harvey of Eagle Rock** reported 2.0". Rainfall amounts from these two nor'easters totaled over 2 inches east of Allegany County with 3 inches plus east of the Blue Ridge to the Chesapeake Bay. The heaviest observed amounts fell in St Marys County where **John Zyla of Ridge** reported 4.18", **Floyd Abell of Hollywood** 4.03" and in Anne Arundel County where **Dan Hanson of Pasadena 2 N** reported 4.05".

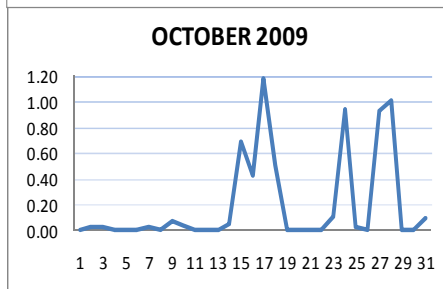
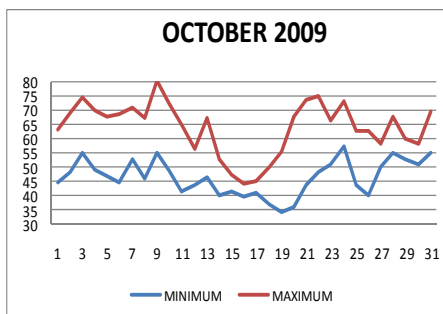
The first 10 days were dry with light precipitation falling generally on the 2nd, 7th, 9th and 10th. Amounts were generally less than a tenth of an inch east of Carroll County. Amounts increased from four tenths of an inch in Carroll County to an inch in Garrett County. Temperatures were pleasant for October during this period. The warmest days were the 3rd and the 9th. Mid 70's were common on the 3rd and 80's on the 9th including $\geq 85^\circ$ from



Photo by Herb Close of Manchester 1 SW

Montgomery County southeast to St Marys County. Strong winds associated with a FROPA occurred mid day on the 7th. Gusts of 50 MPH plus occurred. The strongest gusts reported by ACON

CONTINUED ON PAGE 3



ACON MD/DE Network

Daily average temperatures and precipitation based on observation times, not calendar days.

EXTREMES REPORTED BY

ACON OBSERVERS

MAXIMUM TEMPERATURE

Glenmont 1 NNE	87
Forest Glen	86
Six Stations	85

MINIMUM TEMPERATURE

Davis 3 SE WV	25
Eagle Rock	26
Smithsburg 1.5 SW	26
3 Stations	30

WARMEST AVG. TEMP.

Ridge	59.2
Baltimore 3 SE	58.9
Hollywood	58.3

COLDEST AVG. TEMP.

Davis 3 SE WV	45.8
Frostburg	48.1
Eagle Rock	48.6

MAXIMUM PRECIPITATION

Hollywood	8.68
UofD DEOS Harbeson 8S	8.01
UofD DEOS Georgetown	7.19

MINIMUM PRECIPITATION

Bethesda	4.37
Hagerstown 1 E	4.37
Frostburg	4.73

MAXIMUM SNOWFALL

Davis 3 SE WV	3.6
Eagle Rock	2.2
Manchester 1 SW	0.4

Herb Close of Manchester 1 S is holding his annual Weather Gathering on Saturday, December 5th. Contact either Herb, Kevin or Gary for directions or information.

OBSERVER COMMENTS FOR OCTOBER 2009

Gary Gallaher of Bear 2 SW, DE

Cool, wet month.

14th—16th - Daily record minimum maximum temperatures broken each day.

15th & 17th - Two nor'easters within 3 days brought three consecutive "Raw" days with max's only in the 40's.

19th & 20th - Scrapable frost on cars.

24th - Thunderstorm with heavy rain during the evening.

Greg Latta of Frostburg

16th & 17th - Heavy fog, visibility < 1/2 mile.

Nate Mullins of LaVale

14th—18th - Five consecutive days with record low maximum temperatures. Rain was mixed with snow and sleet at higher elevations.

16th - Max of 38° set a record for the earliest in the season.

29th - Record high min of 54° broke the 53° set in 2004.

Jeff Stoudt of Laurel 2 E

17th - Rain, heavy at times.

24th - Heavy thunderstorm late afternoon.

Marty Sharrow of Owings Mills

3rd - AM clouds; then mostly sunny and warm.

9th - Sunny, breezy, and much warmer.

18th - Rain & AM wet snow, then partly cloudy and milder.

20th - Frosty start, then sun and much warmer.

Joe Manfre of Baltimore 2SE

16th - Cloudy, cold, light rain and drizzle.

31st - Mild, occasional drizzle and light rain.

Ralph Hartsock of Westminster 4 SSE

7th - Brief shower, clearing, windy, wind advisory. Lot of power outages.

18th - Woke up to snow on grass and mulch.

24th - Windy, warm, humid PM rain and thunderstorm.

28th - More rain, heavy at times.

Bobby Miller of Millers 4 NE

1st - Heavy AM dew.

8th - Increasing clouds with afternoon virga. A few drops of rain late evening.

14th - Scattered light frost.

18th - 3 AM: moderate snow, visibility 1/2 mile. First October snow in 30 years.

19th - AM frost, clear skies, 100% sun.

Ray Muller of Westminster City

Past six months with above normal precipitation.

Marty Brumback of Bryans Road 2 ESE

21st - Spectacular day. Sunny, cool, with low humidity.

24th - Showers prior to FROPA, humid, windy.

Eric Glass of Emmitsburg 2 SE

2nd - Very light drizzle, cool.

28th - Steady rain.

Rob Cohen of Potomac 4 N

19th - Light frost on roofs.

24th - 3 PM Thunderstorm

Rich Giannola of Olney 1 S

14th—18th - RA began in afternoon on the 14th. Rainfall was 0.13" by 6:20 AM on the 15th. Rainy day on the 15th. RA and DZ on the 16th totaled 1.04" more by 7:30 PM. RA on 17th = 1.43" more by 11:00 PM. RA continued on the 18th into morning, totaling 0.49" more before ending..

Richard Holden of Clarksburg 2 ENE

7th - Light rain. AM minimum temperature 60°.

18th - Moderate rain / light snow.

24th - Heavy rain. AM minimum temperature 62°.

Stan Rossen of Glenmont 1 NNE

15th—18th - Precipitation continued for over 72 ½ hours from 0530 EST on 10/15 to 0605 EST on 10/18. During this time the precipitation never quite stopped, a light mist continued to fall even when the radar showed nothing.

16th - 43°, second coldest October maximum temperature. Only 10/30/2002 was colder when the max was 40°.

Kevin Shaw of Gaithersburg 2 WNW

No freezing temperature this month for only 5th October out of 31 years of records. 4th wettest October. Daily rainfall records set on 4 days.

14th—18th - Cold rainy period. Daily record low maximum temperature set each day.

19th - Sunny, drying out still cool - frosty AM.

Joe Terry of Forest Glen

9th - Hot and more humid. Dew points rising all day from 50 to 70 degrees.

27th - Surprise thunderstorm very early, only one long, rumble of thunder around 1 AM. First thunder since 9/28.

Floyd Abell of Hollywood

Wettest October in station history. Only 0.01" falling during the first 14 days.

24th - Heavy late day and evening showers.

John Zyla of Ridge

7.18" of rain made this the second wettest October behind 7.27" that fell in 2002.

12th - Cool, grey day.

17th - Heavy rain from 4 AM to 7 AM

Max Hutto of Smithsburg 1.5 SW

10th - Overnight showers, much cooler, breezy.

14th - Cold AM with light frost, day very cool, PM drizzle.

Greg Keefer of Hagerstown 1 E

19th - Morning moderate to heavy frost. Temperature was 32 or below for 4 hours so this is considered a killing freeze.

Jim Vaughn of Smithsburg 2 NE

12th, 15th—18th - Each day set a new daily minimum maximum temperature.

24th - PWG 60 MPH set a new October monthly high surpassing 58 MPH set on 10/28/2006.

Compiled by Gary Gallaher, MD/DE ACON Data Collector and Report Writer, from data received from dedicated observers. Without your observations each month this report will not be possible.

ACON OCTOBER 2009 REPORT

Continued from page 1

observers were 49 MPH by **Jim Vaughn** of **Smithsburg 3 NE**, 48 MPH from the West by **Bobby Miller** of **Millers 4 NE**, and 47 MPH from the Northwest by **Greg Keefer** of **Hagerstown 1 E**. NWS ASOS Wilmington DE reported a 52 MPH gust from the West and NWS BWI ASOS a 48 MPH gust from the West.

Upwards of two inches plus of rain fell during the event of the 23rd and 24th. Heavy showers and thunderstorms occurred during the afternoon and early evening of the 24th. Rainfall amounts from this event as reported by ACON observers varied from as little as 0.25" by **Stan Rossen** of **Glenmont 1 NNE** to 2.27" by **Nate Mullins** of **LaVale**.

The next significant rainfall event occurred on the 27th and 28th. Amounts were generally in the 1 inch to 2 inch range. Below are the greatest amounts reported by ACON observers:

3.97" **UofD DEOS** of **Harbeson 8 S DE**
3.92" **UofD DEOS REC** of **Georgetown DE**
3.36" **Floyd Abell** of **Hollywood**
2.45" **Marty Brumback** of **White Plains 5.5 WNW**

The 31st, Halloween, was mild with light rain during the late afternoon and evening.

Pictures of Joe Terry's Weather Station located in Forest Glen.



Equipment:

Bottom left - Acoustic Snow Depth Sensor
Left - Manual Precip Gauge & Tipping Bucket
Center - Stevenson Screen Instr. Shelter
Right - Lightning Detector Antenna



Instrument Shelter - Newly built from scratch by Joe from the original specifications of a Stevenson Screen.



Rooftop Wind Sensors

Young and Hanson Anemometers



Snow Depth Sensor

If anyone has pictures of their weather station that you would like to include in a future report please forward them. Formats accepted are digital and prints. Prints will be scanned and returned if requested.

**ACON MD / DE / DC
OCTOBER 2009 SUMMARY**

OBSERVER	STATION COUNTY, STATE	TEMPERATURE									PEAK WIND			PRECIPITATION					SNOWFALL				OBS TIME		
		AVG MAX	AVG MIN	MEAN	MAX	DAY	MIN	DAY	MAX >=90	MAX <=32	MIN <=32	GUST	DIR	DAY	TOTAL	MAX DAY	DATE	YEAR	DAYS >=.01"	DAYS >=1"	TOTAL	MAX DAY		DATE	SEA- SON
<i>New Castle, Delaware</i>																									
Gallaher, Gary	Bear 2 SW	63.8	44.7	54.3	80	9	32	19+	0	0	2	42	NW	7	6.25	1.84	24	42.55	14	3	0.0	0.0	0.0	2400	
Legates, David	Middletown 6 N	64.5	46.1	55.3	81	9	34	20	0	0	0	31		7	6.52	1.91	24	<u>21.83</u>	15	3	0.0	0.0	0.0	2400	
NWS Wilmington	New Castle Co. Apt.	64.0	46.6	55.3	79	9	35	19	0	0	0	52	W	7	5.90	1.66	24	41.16	13	3	0.0	0.0	0.0	2400	
UofDE AG FARM DEOS***	Newark	63.6	45.7	54.7	79	9	34	20	0	0	0	27		7	6.51	1.46	24	40.47	14	3				2400	
U of D REC DEOS***	Townsend 4 W	63.5	44.7	54.1	81	9	34	19+	0	0	0	31		7	6.13	1.43	17	<u>37.97</u>	12	3				2400	
<i>Sussex, Delaware</i>																									
NWS Georgetown	Sussex Co. Airport	69.7	51.1	60.4	83	9+	37	20	0	0	0	46	SSW	24	8.86	2.77	27	46.71	11	3				2400	
U of D REC DEOS***	Georgetown 5 SW	66.7	48.5	57.6	80	9	34	20	0	0	0	30		24	7.19	2.39	27	42.34	12	2				2400	
U of D REC DEOS***	Harbeson 8 S	66.5	48.1	57.3	81	24	33	20	0	0	0	24		7	8.01	2.39	27	41.78	10	3				2400	
<i>Allegany, Maryland</i>																									
Latta, Greg	Frostburg	56.4	39.7	48.1	76	10	30	19+	0	0	5				4.73	1.79	24	36.12	13	1	T	T	15	T	0700
Mullins, Nate**	LaVale	57.9	43.2	50.6	74	22	30	19	0	0	1				5.25	1.14	23	36.06	13	2	0.0	0.0	0.0	2400	
<i>Anne Arundel, Maryland</i>																									
Hanson, Dan	Pasadena 2 N	65.4	46.4	55.9	85	9	34	19	0	0	0	32	WNW	7	7.09	1.93	17	42.12	13	3	0.0	0.0	0.0	2400	
Jug Bay Wetlands	Lothian	66.6	44.8	55.7	85	11	32	19	0	0	1				7.11	1.86	18	45.27	14	3	0.0	0.0	0.0	0900	
NWS Baltimore	BWI Airport	64.4	46.2	55.3	83	9	34	20	0	0	0	49	W	7	6.24	1.49	17	42.57	13	2	0.0	0.0	0.0	2400	
Stoudt, Jeff	Laurel 2 E	64.1	48.3	56.2	84	9	37	18+	0	0	0				6.37	2.46	-	44.38	12	3	0.0	0.0	0.0	2400	
<i>Baltimore, Maryland</i>																									
Sharrow, Marty	Owings Mills 2 SE	62.6	44.8	53.7	78	9	32	19+	0	0	2				5.84	1.49	17	35.74	10	1	0.1	0.1	18	0.1	2400
<i>Baltimore City, Maryland</i>																									
Manfre, Joe	Baltimore 2 SE	66.2	51.5	58.9	84	9	37	18	0	0	0				5.99	1.34	17	43.64	13	2	0.0	0.0	0.0	1800	
Maryland Science Ctr	Baltimore Inner Harbor	65.9	51.5	58.7	84	9	37	18	0	0	0				<u>5.09</u>	1.45	17	<u>41.80</u>	13	1				2400	
<i>Carroll, Maryland</i>																									
Close Jr, Herb	Manchester 1 SW	61.3	44.6	53.0	79	9	32	18	0	0	1				6.67	1.18	17	41.99	14	2	0.4	0.4	18	0.4	2300
Hartsock, Ralph	Westminster 4 SSE	63.5	45.2	54.4	77	9	31	19	0	0	2				7.14	1.17	24	<u>46.50</u>	14	5	0.1	0.1	18	0.1	1900
Miller, Bobby	Millers 4 NE	62.2	44.5	53.4	79	9	32	18	0	0	1	48	W	7	6.44	1.09	24	44.93	12	3	0.3	0.3	18	0.3	1800
Muller, Ray +	Westminster City	62.6	45.7	54.2	82	9	32	19	0	0	1	32	SSW	24	6.98	1.58	17	43.39	13	3	T	T	18	T	1900
<i>Charles, Maryland</i>																									
Brumback, Marty	White Plains 5.5 WNW	65.7	48.1	56.9	85	9	37	19+	0	0	0	29	W+	7+	6.46	1.73	17	<u>35.50</u>	9	2	0.0	0.0	0.0	2400	
<i>Frederick, Maryland</i>																									
Glass, Eric	Emmitsburg 2 SE	62.0	43.0	52.5	80	10	35	20	0	0	0				5.73	1.31	18	38.24	13	3	0.0	0.0	0.0	0700	
<i>Garrett, Maryland</i>																									
Harvey, Rebecca	Eagle Rock	56.9	40.2	48.6	76	22	26	19	0	0	6				5.32	1.80	24	41.83	11	2	2.2	2.0	18	2.2	0800

**ACON MD / DE / DC
OCTOBER 2009 SUMMARY**

OBSERVER	STATION COUNTY, STATE	TEMPERATURE									PEAK WIND			PRECIPITATION					SNOWFALL				OBS TIME		
		AVG MAX	AVG MIN	MEAN	MAX	DAY	MIN	DAY	MAX >=90	MAX <=32	MIN <=32	GUST	DIR	DAY	TOTAL	MAX DAY	DATE	YEAR	DAYS >=.01"	DAYS >=1"	TOTAL	MAX DAY		DATE	SEA- SON
<i>Howard, Maryland</i>																									
Giannola, Rich	Laurel JHU / APL	63.2	46.6	54.9	84	9	34	18	0	0	0	43	WSW	7	5.35	1.25	17	36.59	14	1	0.0	0.0	0.0	2400	
<i>Montgomery, Maryland</i>																									
Berger, Ron	Norbeck 1 SE	62.4	46.7	54.6	81	9	34	19	0	0	0				5.74	1.40	17	42.34	13	1	0.0	0.0	0.0	2200	
Cohen, Rob	Potomac 4 N	63.9	46.9	55.4	84	9	35	20	0	0	0				6.24	1.45	17	44.90	11	3	0.0	0.0	0.0	2100	
Giannola, Rich	Olney 1 S	63.5	46.8	55.2	85	9	33	19	0	0	0				6.09	-	41.39	8	3	0.0	0.0	0.0	2400		
Holden, Richard	Clarksburg 2 ENE	62.6	46.6	54.6	83	9	33	19	0	0	0	44	W	7	6.79	1.41	17	44.57	15	3	T	T	18	T	2400
Roth, David	Montgomery Village 1SW	63.3	48.0	55.7	83	9	37	18+	0	0	0	<u>15</u>	<u>Z</u>		5.17	1.14	24	<u>41.33</u>	12	1					2400
Rossen, Stan	Glenmont 1 NNE	65.4	46.5	56.0	87	9	35	19+	0	0	0	15		24	5.45	1.46	17	38.63	14	2	0.0	0.0	0.0	2400	
Scafide, Tony	Bethesda	63.0	47.5	55.3	81	9	36	19	0	0	0	19		24	4.37	1.01	27	34.31	13	1					2400
Shaw, Kevin	Gaithersburg 2 WNW	63.3	47.1	55.2	83	9	34	19	0	0	0				6.57	1.41	17	41.85	14	2	0.0	0.0	0.0	2400	
Terry, Joe	Forest Glen	66.6	46.4	56.5	86	9	33	19	0	0	0	33	WSW	7	5.75	1.43	17	42.09	13	2	0.0	0.0	0.0	2400	
<i>Prince Georges, Maryland</i>																									
Smith, Brian	Oxon Hill																	<u>41.12</u>					<u>0.0</u>	2300	
<i>St. Marys, Maryland</i>																									
Abell, Floyd	Hollywood	67.4	49.1	58.3	85	9	38	19+	0	0	0	26		7	8.68	1.96	27	42.67	10	4	0.0	0.0	0.0	2400	
Zyla, John	Ridge	66.5	51.8	59.2	85	9	39	19	0	0	0	30		17	7.18	1.79	17	44.36	12	2	0.0	0.0	0.0	2400	
<i>Washington, Maryland</i>																									
Hull, Gary	Sharpsburg																	<u>11.04</u>						2400	
Hutto, Max	Smithsburg 1.5 SW	62.6	43.1	52.9	80	9	26	19	0	0	1	34	W	7	5.60	1.47	17	39.60	12	1	0.0	0.0	0.0	2400	
Keefer, Greg	Hagerstown 1 E	63.6	45.5	54.6	81	9	30	19	0	0	1	47	W	7	4.37	1.13	17	36.63	12	1	0.0	0.0	0.0	2400	
Vaughn, Jim	Smithsburg 2 NE	61.6	44.1	52.9	81	9	31	19	0	0	1	60	SE	24	5.12	1.65	17	35.81	12	1	0.0	0.0	0.0	2400	
<i>Wicomico, Maryland</i>																									
NWS Salisbury	Wicomico Co. Apt	67.9	48.6	58.3	80	24	33	20	0	0	0	44	NNW	31	3.70	1.15	28	35.03	8	1	0.0	0.0	0.0	2400	
<i>Arlington, Virginia</i>																									
NWS Washington National Airport	National Airport	66.1	50.8	58.5	85	9	39	18	0	0	0	45	W	7	5.71	1.23	27	35.68	13	2	0.0	0.0	0.0	2400	
<i>Loudon, Virginia</i>																									
NWS Washington Dulles	Dulles Airport	66.1	46.6	56.4	87	9	33	19	0	0	0	45	W	7	5.70	1.69	24	38.93	12	2	0.0	0.0	0.0	2400	
Shaffer, Lance	Sterling 4 N	64.0	48.2	56.1	84	9	36	19+	0	0	0				5.23	1.57	27-28	42.36	12	2	0.0	0.0	0.0	2400	
<i>Tucker, West Virginia</i>																									
Leshner, Dave	Davis 3 SE WV	53.7	37.8	45.8	71	10	25	19	0	2	6				6.63	1.51	24	54.17	16	1	3.6	3.1	18	3.1	0700
SECTION AVERAGE*		63.5	45.5	54.5											5.97		40.92			0.1		0.1			

*SECTIONAL AVERAGE DOES NOT INCLUDE DATA FROM WEST VIRGINIA.

**OBSERVER FOR LAVALLE IS SCOTT LOHR. DATA COMPILED BY NATE MULLINS.

*** DATA FROM DEOS (DELAWARE ENVIROMENTAL OBSERVING SYSTEM) PERMISSION GRANTED FOR USE OF DATA

*** REC= UNIVERSITY OF DELAWARE RESEARCH AND EDUCATION CENTER

+WESTMINSTER CITY MAXIMUMS TEMPERATURES ESTIMATED

National Weather Service station data listed herein is preliminary and may be subject to change. The data has not been certified and cannot be used in legal actions.

Only reports certified by the National Climatic Data Center in Asheville, NC may be used for these purposes.

Accuracy of Data from ACON Observers not guaranteed.

NOTES:

M OR UNDERLINE= MISSING DATA

>= INCLUDED IN NEXT DAYS DATA

ITALIC = ESTIMATED DATA

GARY GALLAHER 11/27/09

ACON MD / DE / DC
OCTOBER 2009 DAILY TEMPERATURES

STATION	1	2	3	4	5	6	7	8	9	10	11	12	13	14	15	16	17	18	19	20	21	22	23	24	25	26	27	28	29	30	31	AVG	OBS TIME
BEAR 2 SW, DE GALLAHER	60 42	68 45	76 55	72 48	68 43	68 40	71 56	68 44	80 57	76 47	65 37	55 42	68 46	53 37	47 41	43 40	46 42	50 35	56 32	66 32	73 39	73 44	66 48	73 61	62 40	62 36	59 50	68 55	57 51	58 44	71 56	63.8 44.7	2400 EDT
MIDDLETOWN 6 N LEGATES	62 44	69 47	77 57	73 50	69 47	70 43	72 54	69 45	81 57	76 48	66 39	55 45	69 45	53 42	47 40	44 42	47 38	51 36	57 37	68 34	74 40	75 45	66 50	74 61	62 43	62 42	59 52	69 56	57 51	58 44	71 56	64.5 46.1	2400 EDT
WILMINGTON , DE NWS NEW CASTLE CO APT	60 44	68 48	74 58	74 51	69 48	67 43	72 54	67 47	79 59	71 47	65 41	55 44	68 44	53 38	49 41	45 40	46 42	51 36	57 35	67 36	75 42	73 48	67 51	73 60	62 44	62 41	60 52	68 56	57 51	58 48	71 57	64.0 46.6	2400 EST
NEWARK AG FARM, DE U OF DE DEOS	59 43	67 46	77 57	72 50	67 46	69 43	71 55	67 45	79 56	75 48	64 41	54 43	67 46	53 39	47 40	43 39	45 41	51 38	55 35	69 34	75 42	75 46	66 50	72 60	62 43	61 39	59 48	67 54	57 51	58 46	69 55	63.6 45.7	2400 EDT
TOWNSEND 4 W, DE U of D REC DEOS	60 42	68 44	75 54	71 47	67 45	69 41	72 53	66 43	79 57	75 46	64 38	55 42	68 43	51 37	46 41	44 40	45 41	49 37	55 34	68 34	73 38	74 45	65 48	75 61	61 40	61 40	58 51	68 55	57 44	58 44	70 55	63.5 44.7	2400 EDT
GEORGETOWN, DE NWS SUSSEX CO APT	68 46	78 50	83 61	77 56	71 50	73 47	79 57	71 51	83 59	79 55	71 45	64 49	75 54	57 46	58 49	57 51	59 51	53 43	60 38	72 37	77 47	79 69	69 83	83 64	64 46	63 43	65 58	72 60	63 53	63 52	78 58	69.7 51.1	2400 EST
GEORGETOWN, DE U of D REC DEOS	64 42	74 48	79 61	74 53	68 43	70 46	75 61	67 46	80 56	77 51	67 44	60 44	71 51	53 42	55 45	53 47	55 48	50 40	55 35	69 34	75 43	76 49	68 53	79 64	64 45	61 40	63 56	69 59	59 53	63 51	76 58	66.7 48.5	2400 EDT
HARBESON 8 S, DE U of D REC DEOS	62 40	72 45	76 61	73 51	66 45	67 42	74 62	68 45	79 54	77 49	66 40	55 43	60 51	71 45	53 45	55 49	56 49	51 44	65 34	69 33	75 42	78 46	67 52	81 64	64 44	61 39	63 57	70 59	59 53	60 53	78 59	66.5 48.1	2400 EDT
FROSTBURG LATTA	54 40	59 40	57 42	66 42	58 40	61 39	64 39	56 41	59 41	76 50	52 38	56 36	54 36	57 32	38 33	35 32	38 32	43 33	43 30	54 30	66 44	74 46	72 44	59 51	62 40	58 37	58 37	54 45	55 47	57 47	58 46	56.4 39.7	0700 EDT
LAVALE MULLINS**	58 48	56 46	62 49	59 45	62 43	60 42	64 47	67 41	72 57	57 44	60 39	55 38	59 42	42 37	40 38	38 36	42 36	43 36	55 30	64 36	72 41	74 42	61 50	64 49	58 44	63 37	55 45	57 51	58 54	57 53	62 44	57.9 43.2	2400 EDT
PASADENA 2 N HANSON	65 42	72 47	78 56	72 49	70 45	69 44	73 49	70 44	85 58	77 48	68 40	56 45	71 48	53 44	48 43	43 41	45 43	53 39	57 34	71 35	77 40	75 46	65 49	74 60	63 41	62 39	58 52	71 57	60 54	60 52	70 57	65.4 46.4	2400 EDT
LOTHIAN JUG BAY	72 44	68 46	73 60	80 48	76 45	73 52	72 42	77 45	> 39	85 >	72 42	56 44	73 37	53 44	50 41	45 42	48 40	53 42	48 32	60 33	60 33	72 39	78 44	> 55	71 45	65 39	65 51	60 53	70 50	57 52	61 53	66.6 44.8	0900 EDT
BALTIMORE NWS BWI APT	64 44	71 51	76 51	69 48	68 47	68 43	71 47	68 45	83 58	73 47	66 40	55 46	55 48	48 43	43 42	43 40	45 42	52 37	57 35	70 34	75 43	74 47	64 48	75 56	62 41	62 39	57 51	71 57	60 54	58 52	70 57	64.4 46.2	2400 EST
LAUREL 2 E STOUDT	63 48	71 51	76 57	70 56	69 50	69 47	70 53	69 48	84 58	75 48	66 44	54 46	69 49	50 42	48 42	43 40	45 40	49 37	56 37	69 38	76 46	73 52	64 58	74 44	62 42	63 52	58 56	66 54	59 52	58 57	69 48.3	2400 EST	
OWINGS MILLS 2SE SHARROW	62 44	69 47	76 56	69 50	68 46	66 42	69 55	67 42	78 53	72 42	65 42	53 42	66 45	49 42	46 40	43 39	44 40	50 34	55 32	68 32	74 41	73 45	62 46	75 50	59 43	61 39	55 45	66 52	59 49	56 53	66 44.8	2400 EDT	
BALTIMORE 2SE MANFRE	66 51	73 56	76 62	71 57	70 53	69 53	74 54	70 51	84 59	76 56	67 50	57 48	71 52	48 46	46 43	46 41	54 42	58 37	72 40	76 43	78 50	65 56	77 63	63 64	64 61	61 74	62 60	74 62	60 55	72 59	66.2 51.5	1800 EDT	
BALT INNER HARBOR MD SCIENCE CENTER	65 51	73 56	76 62	70 57	69 53	74 53	70 51	84 59	76 56	67 48	57 45	70 48	52 46	43 43	41 42	46 37	54 40	57 43	72 50	76 54	77 54	65 56	75 59	63 49	63 50	60 49	60 52	72 63	63 56	61 55	72 59	65.9 51.5	2400 EST
MANCHESTER 1SW CLOSE	62 39	66 46	76 53	67 48	66 45	68 47	66 50	67 43	79 52	67 46	64 41	50 39	65 45	48 36	41 36	38 34	40 37	55 32	69 33	74 40	77 48	62 52	69 54	60 42	61 45	53 46	67 51	56 50	52 47	65 52	61.3 44.6	2300 EDT	
WESTMINSTER 4 SSE HARTSOCK	68 43	69 43	73 53	74 47	67 46	70 41	63 57	77 46	73 58	62 41	60 45	66 37	54 41	45 37	41 36	42 38	52 32	53 31	65 35	70 46	74 46	65 50	75 56	63 42	61 38	56 46	66 53	62 54	57 50	70 54	63.5 45.2	1900 EDT	
MILLERS 4NE MILLER	59 41	66 41	73 52	66 47	65 41	65 41	65 56	65 47	79 52	76 56	61 39	56 43	63 35	45 40	40 35	41 38	51 35	55 32	68 35	72 36	75 49	66 51	70 55	65 44	62 37	55 45	66 51	62 48	54 52	66 44.5	1800 EDT		
WESTMINSTER CITY MULLER	61 45	68 45	75 55	65 49	66 47	68 43	70 55	66 47	82 54	76 52	63 41	55 42	66 48	50 38	50 39	43 37	43 38	52 34	54 38	69 43	61 50	74 51	63 56	70 44	63 39	61 49	54 49	67 51	61 52	56 50	68 45.7	1900 EDT	
WHITE PLAINS 5.5 WNW BRUMBACK	65 49	70 48	77 55	71 49	70 47	71 54	69 46	85 46	89 50	77 42	68 46	56 46	74 44	54 44	49 44	43 43	45 39	51 37	57 37	69 43	75 52	74 54	70 57	62 42	64 53	58 57	71 60	60 54	60 53	71 57	65.7 48.1	2400 EDT	
EMMITSBURG 2 SE GLASS	63 45	59 43	67 48	73 44	66 46	66 40	65 40	66 45	80 45	67 45	62 38	52 39	64 43	48 40	45 37	43 38	43 38	53 39	55 37	67 35	72 38	76 46	67 49	74 45	61 37	62 39	55 49	69 49	59 53	59 52	62.0 43.0	0630 EDT	

**ACON MD / DE / DC
OCTOBER 2009 DAILY TEMPERATURES**

STATION	1	2	3	4	5	6	7	8	9	10	11	12	13	14	15	16	17	18	19	20	21	22	23	24	25	26	27	28	29	30	31	AVG	OBS TIME	
EAGLE ROCK	50	60	50	58	59	66	68	54	69	75	50	56	54	58	38	38	34	38	38	59	69	76	70	64	60	62	60	59	52	56	64	56.9	0800	
HARVEY	40	40	42	44	40	38	44	38	38	52	38	36	38	32	34	30	30	30	26	30	44	52	52	54	50	34	38	48	45	46	44	40.2	EDT	
LAUREL JHU / APL	63	70	77	67	67	67	70	67	84	75	64	54	67	49	45	40	43	50	56	71	76	76	62	73	60	61	56	68	58	57	68	63.2	2400	
GIANNOLA	46	49	54	50	48	45	53	48	56	50	43	44	45	40	39	37	39	34	36	36	47	52	50	56	43	40	49	55	53	51	55	46.6	EDT	
NORBECK 1 SE	62	68	73	67	66	67	68	65	81	76	63	54	68	54	47	42	45	50	52	65	70	71	63	70	59	62	57	65	60	57	68	62.4	2200	
BERGER	43	48	56	49	47	45	55	46	57	51	40	44	46	40	42	39	40	36	34	35	47	49	50	60	43	38	51	55	54	52	56	46.7	EDT	
POTOMAC 4N	64	70	75	68	68	68	70	67	84	76	66	55	68	56	46	43	44	52	55	66	73	71	64	70	63	63	56	71	62	57	69	63.9	2100	
COHEN	43	49	56	47	46	46	56	45	56	54	41	46	46	42	43	39	41	37	36	35	42	47	49	60	41	39	52	57	54	52	56	46.9	EDT	
OLNEY 1 S	64	69	75	69	68	67	68	68	85	75	65	54	68	49	46	42	44	50	56	70	76	74	62	71	61	65	56	68	59	57	68	63.5	2400	
GIANNOLA	45	50	55	50	48	46	55	46	57	50	43	44	47	40	41	38	40	34	33	37	47	50	51	57	43	41	51	54	53	51	55	46.8	EDT	
CLARKSBURG 2ENE	62	68	75	67	67	68	67	66	83	69	64	53	67	48	45	41	42	51	55	70	74	73	63	71	60	63	55	70	60	55	69	62.6	2400	
HOLDEN	44	49	54	52	49	47	51	47	55	46	44	42	45	38	38	37	38	35	33	41	53	52	54	53	43	44	50	54	52	50	54	46.6	EST	
MONTGOMERY VILLAGE	62	68	74	66	65	67	68	66	83	74	63	53	66	51	47	43	44	52		67	71	72	63	71	60	63	57	68	62	61	70	63.3	2400	
ROTH 1SW	46	51	57	49	48	46	55	48	50	51	43	46	48	42	42	39	41	37		37	44	50	52	57	45	39	52	55	57	57	57	48.0	EDT	
GLENMONT 1NNE	66	70	79	74	72	70	72	72	87	72	68	54	71	50	47	43	45	50	58	73	78	76	64	72	62	66	57	71	60	59	69	65.4	2400	
ROSSEN	44	50	53	48	48	46	49	47	57	48	42	44	47	40	42	40	42	37	35	35	43	47	49	55	42	39	52	57	54	52	57	46.5	EST	
BETHESDA	62	69	73	67	67	67	71	66	81	75	63	54	68	51	47	42	44	52	54	66	71	73	65	73	60	62	57	68	60	58	69	63.0	2400	
SCAFIDE	45	52	56	50	48	48	51	46	57	50	44	46	46	42	42	39	41	37	36	37	46	51	52	57	43	41	52	56	54	52	56	47.5	EDT	
GAITHERSBURG 2WNW	64	69	74	68	67	68	69	67	83	73	65	55	67	51	47	43	44	53	55	67	70	71	63	72	61	63	56	69	61	58	70	63.3	2400	
SHAW	45	50	55	49	48	46	53	46	58	50	43	45	48	42	42	39	41	37	34	36	43	48	51	57	44	39	52	55	55	53	57	47.1	EDT	
FOREST GLEN	68	71	79	72	72	72	74	71	86	75	69	57	73	52	48	44	46	53	60	73	78	77	66	74	64	67	58	75	62	59	69	66.6	2400	
TERRY	43	51	53	48	46	46	50	45	58	48	41	45	45	40	42	40	41	37	33	35	44	49	51	57	42	39	52	56	53	52	56	46.4	EDT	
OXON HILL																																		2300
SMITH																																		EDT
HOLLYWOOD	68	75	80	73	72	73	78	71	85	76	70	56	74	55	52	48	48	50	59	70	76	76	75	79	62	65	58	74	59	62	71	67.4	2359	
ABELL	47	50	58	52	48	50	53	47	59	51	44	47	48	46	48	43	43	40	38	38	45	50	52	62	45	43	54	58	52	53	59	49.1	EDT	
RIDGE	64	74	76	75	70	72	79	70	85	78	65	61	74	52	54	48	49	51	58	67	70	75	73	77	59	62	61	71	58	61	73	66.5	2400	
ZYLA	53	63	61	58	54	59	54	52	61	58	50	52	50	48	48	46	43	43	39	46	49	48	48	59	49	48	47	58	51	53	59	51.8	EDT	
SHARPSBURG																																		2400
HULL																																		EDT
SMITHSBURG 1.5 SW	61	68	75	65	67	68	64	65	80	68	61	54	64	48	44	42	42	51	57	70	74	76	66	74	62	63	54	67	61	56	74	62.6	2400	
HUTTO	43	44	50	41	43	37	54	45	55	42	35	39	46	33	39	38	39	34	26	33	37	45	49	55	39	33	50	54	51	53	55	43.1	EDT	
HAGERSTOWN 1E	63	67	76	68	69	69	66	66	81	68	64	54	66	49	45	42	43	52	58	72	75	78	66	74	63	63	55	68	61	56	75	63.6	2400	
KEEFER	46	49	54	45	46	40	55	48	56	45	38	42	48	37	40	38	39	39	30	37	40	47	51	56	42	36	51	54	52	53	55	45.5	EDT	
SMITHSBURG 2 NE	60	66	73	64	66	66	65	63	81	68	61	52	63	47	44	40	42	50	55	69	73	75	66	72	63	62	54	65	56	56	72	61.6	2400	
VAUGHN	45	48	51	44	47	42	51	44	52	45	39	40	43	33	34	34	35	33	31	37	46	51	53	52	44	40	48	51	52	50	51	44.1	EDT	
SALISBURY	66	75	78	76	70	71	78	69	79	76	68	62	73	56	56	54	56	52	57	67	75	75	73	80	63	64	65	71	60	64	77	67.9	2400	
NWS WICOMICO CO APT	44	46	63	53	47	45	54	48	52	52	43	45	50	44	46	48	50	39	34	33	42	48	52	63	43	41	58	60	53	52	59	48.6	EDT	
WASH NATIONAL	66	72	77	72	71	71	75	71	85	74	68	57	73	52	50	45	47	53	59	70	75	73	67	72	63	65	59	73	62	61	71	66.1	2400	
NWS ASOS	50	56	61	54	54	52	56	52	61	53	49	49	50	46	44	42	43	39	40	41	47	52	54	58	48	45	54	58	56	54	58	50.8	EST	
WASH DULLES	67	71	78	71	71	71	74	71	87	72	68	55	73	51	49	44	45	53	59	72	77	77	69	74	63	66	57	72	63	58	72	66.1	2400	
NWS ASOS	41	52	50	44	47	47	54	49	58	48	39	46	46	44	42	40	40	40	33	35	40	49	50	56	41	38	53	56	56	54	57	46.6	EST	
STERLING 4 N	65	68	75	68	69	68	72	68	84	71	66	54	68	51	49	44	45	52	56	67	72	72	62	73	62	65	57	69	63	58	70	64.0	2400	
SHAFFER	46	50	57	49	47	47	63	48	58	54	44	47	43	44	41	42	41	36	36	43	47	51	61	46	40	52	53	56	56	53	48.2	EDT		
DAVIS 3 SE WV	45	54	59	59	52	57	62	50	63	71	50	51	51	54	38	40	38	31	31	46	62	69	63	63	60	53	56	57	50	61	69	53.7	0700	
LESHER	36	36	41	41	38	36	42	35	35	50	36	34	40	32	32	35	30	28	25	26	38	42	50	51	34	34	38	48	42	42	45	37.8	EDT	

ACON MD / DE / DC
OCTOBER 2009 DAILY PRECIPITATION

STATION	1	2	3	4	5	6	7	8	9	10	11	12	13	14	15	16	17	18	19	20	21	22	23	24	25	26	27	28	29	30	31	TOTAL	OBS TIME
BEAR 2 SW, DE GALLAHER		0.02	0.01				0.02		0.02	0.01					0.50	0.12	1.39	0.27					0.09	1.84			0.57	1.26			0.13	6.25 0.0	2400 EDT
MIDDLETOWN 6 N LEGATES		0.01	0.01				0.02		0.05	0.02					0.53	0.15	1.43	0.23					0.08	1.91	0.01		0.57	1.34			0.16	6.52 0.0	2400 EDT
WILMINGTON, DE NWS NEW CASTLE CO APT		0.03	T				0.04		0.07	0.01				T	0.44	0.02	1.19	0.22					0.16	1.66			0.66	1.22			0.18	5.90 0.0	2400 EST
NEWARK AG FARM, DE U OF DE DEOS		0.04	0.01				0.06		0.11	0.04					0.57	0.12	1.45	0.34					0.14	1.46			0.70	1.23			0.24	6.51 0.0	2400 EDT
TOWNSEND 4 W, DE U of D REC DEOS			0.01				0.02		0.02						0.73	0.17	1.43	0.40					0.05	1.18			0.64	1.28			0.20	6.13 0.0	2400 EDT
GEORGETOWN, DE NWS SUSSEX CO APT			0.08			T	0.06			T				0.07	0.95	0.30	1.11	0.23						0.88			2.77	2.06			0.35	8.86 -	2400 EST
GEORGETOWN, DE U of D REC DEOS			0.13	0.01			0.05							0.05	0.93	0.21	0.77	0.27						0.71			2.39	1.53			0.14	7.19 0.0	2400 EDT
HARBESON 8 S, DE U of D REC DEOS							0.06							0.05	0.98	0.63	1.46	0.52						0.28			2.39	1.58			0.06	8.01 0.0	2400 EDT
FROSTBURG LATTA	0.01		0.21				0.01		0.10	0.29	T		T		0.20 T	0.84	0.07	0.11						1.79	0.30		T	0.79	0.01			4.73 T	0700 EDT
LAVALE MULLINS**		0.18					0.12		0.19					0.12	0.74	0.38	0.20	T					1.14	1.13			0.69	0.27		0.06	0.03	5.25 0.0	2400 EDT
PASADENA 2N HANSON		0.02					0.04			0.02				0.06	0.99	0.61	1.93	0.46					0.03	1.03			0.86	1.00			0.04	7.09 0.0	2400 EDT
LOTHIAN JUG BAY		0.02	0.01				0.01			>	0.01				0.20	0.67	1.01	1.86					>	0.03	0.72	0.01	0.75	1.80	0.01			7.11 0.0	0900 EDT
BWI NWS ASOS		0.08				T	0.02	T	0.02	T				0.04	0.50	0.48	1.49	0.68					0.04	0.96			1.06	0.84		T	0.03	6.24 0.0	2400 EST
LAUREL 2 E STOUDT		0.13					0.03		0.01	0.02				0.06	0.67	>	>	2.46					0.03	1.12			1.08	0.72	T	T	0.04	6.37 0.0	2400 EST
OWINGS MILLS 2SE SHARROW		T					T		0.04	T				0.04	0.50	0.48	1.49	0.68 0.1					0.04	0.86			0.81	0.90				5.84 0.1	2400 EDT
BALTIMORE 2SE MANFRE		0.08					0.01							0.03	0.56	0.38	1.34	0.68					0.06	1.16			0.67	0.96		0.01	0.05	5.99 0.0	1800 EDT
BALT INNER HARBOR MD SCIENCE CENTER		0.08					0.01		0.04					0.03	0.51	0.35	1.45	0.60					0.18	0.96			0.85	M		0.01	0.02	5.09 -	2400 EST
MANCHESTER 1SW CLOSE		0.06	0.01			T	0.01	T	0.26	0.01				T	1.06	0.59	1.18	0.56 0.4	T				0.32	0.86			0.80	0.88	T	T	0.07	6.67 0.4	2300 EDT
WESTMINSTER 4 SSE HARTSOCK			0.06				0.02		0.23	0.07				0.01	1.00	0.53	1.07	1.03 0.1					0.05	1.17			0.77	1.08			0.05	7.14 0.1	1900 EDT
MILLERS 4NE MILLER			0.07				T		0.15	0.19					0.78	0.50	0.98	1.07 0.3					0.04	1.09	T		0.51	1.01		T	0.05	6.44 0.3	1800 EDT
WESTMINSTER CITY MULLER		0.06	T						0.36	0.10				0.02	1.00	0.60	1.58	0.77 T					0.05	1.24			0.67	0.47		T	0.06	6.98 T	1900 EDT
WHITE PLAINS 5.5 WNW BRUMBACK								T							0.75	0.52	1.73	0.14					0.01	0.56			0.90	1.55			0.30	6.46 0.0	2400 EDT
EMMITSBURG 2 SE GLASS		T	T						0.20	0.01					0.04	1.01	0.66	1.31						0.83	0.17		0.28	1.10		0.04	0.04	5.73 0.0	0630 EDT

ACON MD / DE / DC
OCTOBER 2009 DAILY PRECIPITATION

STATION	1	2	3	4	5	6	7	8	9	10	11	12	13	14	15	16	17	18	19	20	21	22	23	24	25	26	27	28	29	30	31	TOTAL	OBS TIME		
EAGLE ROCK HARVEY	0.14		0.30						0.29	0.40					0.25	0.60	0.20	0.27						1.80				1.00	0.07			5.32	0800 EDT		
LAUREL JHU / APL GIANNOLA		0.02					0.04		0.01	0.01				0.08	0.66	0.46	1.25	0.75					0.03	0.30			0.97	0.76			0.01		5.35	2400 EDT	
NORBECK 1 SE BERGER		0.03					0.02			0.03				0.13	0.72	0.49	1.40	0.52					0.01	0.65			0.75	0.96			0.03		5.74	2200 EDT	
POTOMAC 4N COHEN		T					0.03			0.04				0.16	0.72	0.58	1.45	0.36					0.02	1.23			0.60	1.05			T		6.24	2100 EDT	
OLNEY 1 S GIANNOLA		0.02					0.05			0.02				>	>	>	>	3.09					0.03	1.13			>	1.69			0.06		6.09	2400 EDT	
CLARKSBURG 2ENE HOLDEN		0.03					0.05	T	0.06	0.02				0.15	1.01	0.72	1.41	0.26					0.10	0.91			1.38	0.66		0.01	0.02		6.79	2400 EST	
MONTGOMERY VILLAGE ROTH 1SW		0.04				0.05				0.02				0.17	0.73	0.28	0.65	0.22					0.05	1.14			0.87	0.95					5.17	2400 EDT	
GLENMONT 1NNE ROSSEN		0.02				T	0.01	T	0.01	0.01				0.11	0.75	0.61	1.46	0.40					0.02	0.23		T	1.16	0.65	T	T	0.01		5.45	2400 EST	
BETHESDA SCAFIDE		0.01	0.01							0.03				0.14	0.67	0.56	0.93	0.18					0.02	0.32			1.01	0.48			0.01		4.37	2400 EDT	
GAITHERSBURG 2WNW SHAW		0.02					0.04	T	T	0.02				0.16	0.84	0.45	1.41	0.22				T	0.03	1.41			0.95	0.95	0.01	T	0.06		6.57	2400 EDT	
FOREST GLEN TERRY		0.02					0.01	T	T	0.03				0.15	0.71	0.59	1.43	0.43					0.01	0.28			1.29	0.76		T	0.04		5.75	2400 EDT	
OXON HILL SMITH																																		2300 EDT	
HOLLYWOOD ABELL							0.01			T				T	0.96	0.46	1.59	1.02					T	0.60		0.01	1.96	1.40			0.67		8.68	2359 EDT	
RIDGE ZYLA						T	0.01		0.04					0.01	0.87	0.60	1.79	0.91					0.04	0.29			0.97	1.22			0.43		7.18	2400 EDT	
SHARPSBURG HULL																																		2400 EDT	
SMITHSBURG 1.5 SW HUTTO		0.04							0.27	T				0.01	0.91	0.33	1.47	0.29					0.57	0.19			0.72	0.75	T	T	0.05		5.60	2400 EDT	
HAGERSTOWN 1E KEEFER		0.02							0.17	T				0.01	0.76	0.26	1.13	0.15					0.50	0.18			0.54	0.60	T	T	0.05		4.37	2400 EDT	
SMITHSBURG 2 NE VAUGHN									0.30					0.02	0.62	0.22	1.65	0.24					0.44	0.53			0.52	0.50		0.01	0.07			5.12	2400 EDT
SALISBURY NWS WICOMICO CO APT		T				T	0.01			0.02				T	0.69	T	0.69	0.45					0.04		T	0.65	1.15			T			3.70	2400 EDT	
WASH NATIONAL NWS ASOS		0.02				T	T	T	0.01	T				0.06	0.57	0.44	1.20	0.33					0.02	0.90		0.02	1.23	0.78	T	T	0.13		5.71	2400 EST	
WASH DULLES NWS ASOS		T					T	0.01	0.03	T				0.10	0.77	0.32	1.01	0.06					0.04	1.69		T	0.95	0.66		T	0.06		5.70	2400 EST	
STERLING 4 N SHAFFER		0.01					0.01	T		0.01				0.16	0.80	0.50	1.00	0.10					0.04	0.90	T		>	1.57			0.13		5.23	2400 EDT	
DAVIS 3 SE WV LESHAR	0.19		0.09				0.69		0.65	0.76	0.17		0.04		0.18	0.54	0.07	0.41	0.04					1.51	0.29		T	0.93	0.07				6.63	0700 EDT	
															T		T	3.1	0.5														3.6		