



<http://www.jhuapl.edu/weather/education/ACONdata.html>

ATLANTIC COAST OBSERVER NETWORK, MD / DE / DC CHAPTER WITH DATA FROM NEARBY AREAS

WET MONTH ESPECIALLY ALONG THE I-95 CORRIDOR SOUTH OF BALTIMORE

The trend of frequent soaking rainfalls that began during April continued through May and even intensified. Moist ground turned soggy. Then after the drying shortly after mid month, the grounds became saturated with numerous patches of standing water as several heavy to intense thunderstorm downpours drenched the area within a five-day period from the 25th to the 29th. Baltimore, having marked its 2nd wettest May of 139, provided an idea how anomalously wet this May was. The prevailing wet grounds appeared to have a significant tempering affect on numerous daily max temperatures, preventing extremes of heat. However, the month average temperature was close to normal. The above was taken from **Jeff Stoudt's Laurel 2E** monthly report and edited for this report.

The month began with measurable precipitation on 8 of the first 9 days. **Nate Mullins** of **LaVale** reported 2.56" on the 4th and some flooding in the area.

Many stations in central Maryland had rainfall on all but three of the first 17 days. The only dry period of the month occurred from the 18th to the 24th.

Rains returned on the 25th and lasted till the 29th. The heaviest fell south of Baltimore and in the Washington DC suburbs. 3 to 5 inches was common in this area. **Jeff Stoudt** of **Laurel 2 E** reported slightly more than 4" in the 24 hour period on the 25th - 26th. **Lance Schafer** of **Sterling 4 N** reported 5.49" the 24th - 29th.

Meanwhile less than an inch of rain fell from the 8th to the 31st in New Castle County Delaware. In contrast to the wet, soggy ground to the southwest the ground was actually becoming dry.

An easterly wind component made for raw, wet, rainy days. Maximum temperatures on the 4th were only in the lower to mid 50's. Another cold damp day was the 26th when temperatures fell into the 50's from the days high before dawn. **Joe Terry** of **Forest Glen** reported his

daily minimum at noon.

Minimum temperatures were above normal due to the above average cloud cover. Frost was reported by some observers on the 19th.

The nicest weather occurred from the 18th thru the 24th. The coldest sunny day of the month was the 18th when temperatures only rose to around 60 degrees. Clear skies and calm winds permitted the temperatures to rapidly fall into the 30's on the morning of the 19th. Temperatures quickly rebounded. From the 20th to the 25th 80's were common. The warmest day of the month was the 23rd when mid 80's were common.

A frontal system stalled to the south of Baltimore on Memorial Day, the 25th, bringing the return of showers and thundershowers.

EXTREMES REPORTED BY

ACON OBSERVERS

MAXIMUM TEMPERATURE

Montgomery Village 1SW 89
Eight Stations 88

MINIMUM TEMPERATURE

Eagle Rock 26
Davis 3 SE WV 31
Frostburg 32

WARMEST AVG. TEMP.

Baltimore 2 SE 66.6
Montgomery Village 1SW 65.9

COLDEST AVG. TEMP.

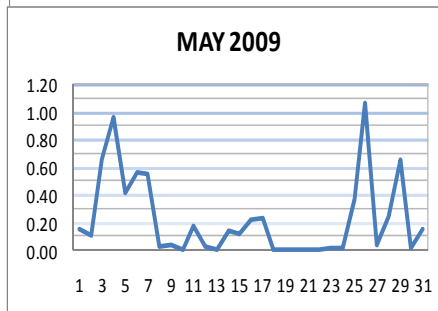
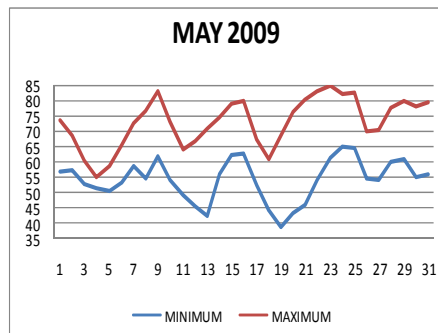
Davis 3 SE WV 55.2
Frostburg 56.8
Eagle Rock 57.9

MAXIMUM PRECIPITATION

Sterling 4 N 10.48
Gaithersburg 2 WNW 9.78

MINIMUM PRECIPITATION

UofD REC Newark DE 3.84
Owings Mills 2 SE 3.88



ACON MD/DE Network

Daily average temperatures and precipitation based on observation times, not calendar days.

IMPORTANCE OF ACCURATE DATA

With all of the reports concerning global warming the accuracy of your data is of the utmost importance. At your observation time note your temperature extremes and precipitation amount for the previous 24 hours. If any precipitation falls or temperature extremes occur after your observation during the same calendar day do not adjust your data. This can be noted in your daily notes if you wish. If you miss a day due to being away etc. include the data in your next observation and note it on your form that it is for more than one day. Do not exclude the data.

Thanks! Kevin & Gary.

OBSERVER COMMENTS FOR MAY 2009

Gary Gallaher of Bear 2 SW, DE

Temperatures averaged slightly above normal as a result of many cloudy nights which held temperatures up.

19th - Frosty morning but no damage.

Greg Latta of Frostburg

24th, 25th, 29th - Thunder during the previous 24 hours ending at 7 AM.

Nate Mullins of LaVale

4th - Steady rain overnight became heavy around daybreak and remained heavy through early afternoon. These heavy rains caused some flooding in the area.

8th - 10 consecutive days with measurable precipitation 4/29 to 5/8.

23rd - Wild thunderstorm suddenly blew up 4 to 5 miles SE of station at 4:30 PM. The storm produced extremely heavy rain, nearly continuous lightning, large hail and damaging winds. 2.52" was recorded at the Cumberland River Station on the Potomac North Branch and a 46 MPH gust at Wiley Ford, WV.

Jeff Stoudt of Laurel 2 E

May was much rainier than normal (9.45) with several heavy to intense thunderstorm downpours mostly near the end of the month. This wetness likely reduced some daily maximum temperatures; however, the monthly temperature (64.7) averaged to near normal.

Marty Sharrow of Owings Mills

1st - Lots of clouds, AM showers and milder.

4th - Low overcast, rainy, and chilly.

13th - Cold start, then sunny and seasonable.

Joe Manfre of Baltimore 2SE

6th, 7th, 25th, & 29th - Thunder.

18th - Mostly cloudy, cool, breezy.

26th - Occasional showers and drizzle.

Ralph Hartsock of Westminster 4 SSE

4th - Rain, some moderate to heavy, ends late.

13th - Light frost

16th - Late heavy thunderstorms, vivid lightning.

26th - Rainy and cold. Carryover high temperature.

Bobby Miller of Millers 4 NE

14th - Occasional light showers, thunder late AM, lightning north 9PM.

21st - Heavy AM dew, clear skies all day. Minimum relative humidity 27%.

29th - Heavy shower 1:30 AM, thunder 4 PM.

Marty Brumback of Bryans Road 2 ESE

16th - Cloudy AM, sunny PM, Thunderstorm 10 PM.

25th - Mostly cloudy with dew points in lower 70's, thundershowers.

26th - Thunderstorm with high winds at 8:25 AM.

29th - Thunderstorms just after midnight and at 5:40 PM with intense precipitation.

Eric Glass of Emmitsburg 2 SE

16th - Lots of overcast clouds, humid, and warmer.

25th - Little sunshine, humid and warm.

26th - Light steady rain, cooler.

Rebecca Harvey of Eagle Rock

19th - Light frost.

Rich Giannola of JHU/APL

29th - ++TSRA began 2:30 PM, peak wind gust 45 WNW at 2:32 PM. Max rainfall rate 5.12"/hour at 2:45 PM.

Rob Cohen of Potomac 4 N

Wettest May at this station.

Thunder on the following days: 6th, 7th, 16th, 25th, 26th, 28th & 29th.

Rich Giannola of Olney 1 S

3rd & 4th - Rainy days. 1.72" by 5:45 PM of the 4th. 0.08" more during the evening.

6th & 7th - Rain began ~ 6PM on the 6th and totaled 1.14" by 6 AM of the 7th.

Stan Rossen of Glenmont 1 NNE

2008 tied 1978 for the third wettest May since station was established on 8/4/1976. Only 5/1989 (10.93") and 5/1988 (7.73") were wetter.

Kevin Shaw of Gaithersburg 2 WNW

Second wettest May with 9.78". Wettest May is 1988 when 10.05" fell. 5 days had more than an inch or rain. 19 days with measurable rain one day shy of the record of 20 days set in 2003.

Joe Terry of Forest Glen

Wettest May in 15 year station history. Exceeds the previous record set last year by 1.51". About half of the days managed to reach the 80's despite the very wet, cloudy weather.

Floyd Abell of Hollywood

3rd - Rain heavy a times during the evening.

31st - Early morning thunderstorm, then fair.

John Zyla of Ridge

8th - First day with clear sky since 4/27.

29th - Pea size hail at 6:18 AM.

Max Hutto of Smithsburg 1.5 SW

15th - AM fog, warm, cloudy.

25th - Memorial Day, partly cloudy, nearby thunderstorm.

Greg Keefer of Hagerstown 1 E

14th - Warm, mild, humid with scattered showers and thundershowers.

19th - Trace of frost but not a killer.

Jim Vaughn of Smithsburg 2 NE

Wind gust of 56 on the 14th, 48 on the 26th & 48 on the 13th.

Compiled by Gary Gallaher, MD/DE ACON Data Collector and Report Writer, from data received from dedicated observers. Without your observations each month this report will not be possible.

**ACON MD / DE / DC
MAY 2009 SUMMARY**

OBSERVER	STATION COUNTY, STATE	TEMPERATURE									PEAK WIND			PRECIPITATION					SNOWFALL				OBS TIME	
		AVG MAX	AVG MIN	MEAN	MAX	DAY	MIN	DAY	MAX >=90	MAX <=32	MIN <=32	GUST	DIR	DAY	TOTAL	MAX DAY	DATE	YEAR	DAYS >=.01"	DAYS >=1"	TOTAL	MAX DAY		DATE
<i>New Castle, Delaware</i>																								
Gallaher, Gary	Bear 2 SW	72.9	52.3	62.6	85	23	33	19	0	0	0	33	S+	14+	4.76	0.95	6	15.15	14	0	0.0	0.0	16.1	2400
NWS Wilmington	New Castle Co. Apt.	73.0	53.8	63.4	85	23	37	19	0	0	0	37	S	14	3.89	1.01	6	13.01	15	1	0.0	0.0	16.1	2400
UofDE AG FARM DEOS***	Newark	73.5	53.1	63.3	86	23	37	19	0	0	0	24		26	3.84	0.73	7	13.73	15	0				2400
U of D REC DEOS***	Townsend 4 W	71.6	53.6	62.6	83	23	38	19	0	0	0	24		10	4.72	0.84	4	14.26	15	0				2400
<i>Sussex, Delaware</i>																								
NWS Georgetown	Sussex Co. Airport	74.6	56.2	65.4	88	9	41	19	0	0	0	48	SSW	14	4.92	0.69	31	15.63	15	0				2400
U of D REC DEOS***	Georgetown 5 SW	73.6	55.6	64.6	86	9	39	20	0	0	0	27		10	5.96	1.44	25	15.94	15	1				2400
U of D REC DEOS***	Harbeson 8 S	71.8	54.1	63.0	85	9	38	19+	0	0	0	24		14	4.44	0.72	7	15.06	16	0				2400
<i>Allegany, Maryland</i>																								
Latta, Greg	Frostburg	66.8	46.7	56.8	82	22	32	18+	0	0	2				6.44	1.29	5	17.13	19	2	0.0	0.0	42.7	0700
Mullins, Nate**	LaVale	69.1	51.2	60.2	84	23	34	19	0	0	0				5.76	2.56	4	15.56	18	1	0.0	0.0	20.9	2400
<i>Anne Arundel, Maryland</i>																								
Hanson, Dan	Pasadena 2 N	74.2	55.0	64.6	87	9	38	19	0	0	0	28	SE	14	6.70	1.52	26	17.87	17	2	0.0	0.0	8.9	2400
Jug Bay Wetlands	Lothian	75.0	54.5	64.8	86	30	36	19	0	0	0				5.69	1.49	3	14.82	16	1	0.0	0.0	7.8	0900
NWS Baltimore	BWI Airport	73.4	54.0	63.7	86	23	38	19	0	0	0	36	W	9	8.42	2.29	26	19.28	18	3	0.0	0.0	8.5	2400
Stoudt, Jeff	Laurel 2 E	73.3	56.0	64.7	87	23	41	19	0	0	0				9.45	2.35	26	21.27	19	3	0.0	0.0	11.0	2400
<i>Baltimore, Maryland</i>																								
Sharrow, Marty	Owings Mills 2 SE	72.4	52.8	62.6	84	23+	37	19	0	0	0				3.88	0.91	4	13.88	16	0	0.0	0.0	14.8	2400
<i>Baltimore City, Maryland</i>																								
Manfre, Joe	Baltimore 2 SE	74.7	58.5	66.6	88	23	48	19	0	0	0				7.64	1.58	26	18.72	19	3	0.0	0.0	6.5	1800
Maryland Science Ctr	Baltimore Inner Harbor	74.6	58.5	66.6	88	23	48	19	0	0	0				6.35	1.26	6	17.41	18	1				2400
<i>Carroll, Maryland</i>																								
Close Jr, Herb	Manchester 1 SW	71.4	51.9	61.7	84	22+	41	12+	0	0	0				5.58	1.51	4	14.20	18	2	0.0	0.0	17.5	2300
Hartsock, Ralph	Westminster 4 SSE	73.3	52.1	62.7	86	23	35	19	0	0	0	40		9	6.05	1.34	4	16.31	18	1	0.0	0.0	15.4	1900
Miller, Bobby	Millers 4 NE	71.5	51.4	61.5	83	23	34	19	0	0	0	39	SW	16	4.86	1.48	4	14.30	16	1	0.0	0.0	18.6	1800
Muller, Ray	Westminster City														5.55	1.31	4	13.62	19	2			15.5	1900
<i>Charles, Maryland</i>																								
Brumback, Marty	Bryans Road 2 ESE	75.6	55.5	65.6	88	9	35	19	0	0	0	34	S	14	8.02	1.24	25	18.28	20	1	0.0	0.0	10.4	2400
<i>Frederick, Maryland</i>																								
Glass, Eric	Emmitsburg 2 SE	70.5	50.9	60.7	83	23+	37	19	0	0	0				6.11	0.97	5	14.75	16	0	0.0	0.0	6.8	0630
<i>Garrett, Maryland</i>																								
Harvey, Rebecca	Eagle Rock	68.5	47.3	57.9	86	23	26	18	0	0	1				7.15	1.50	4	22.10	17	2	0.0	0.0	118.3	0800

**ACON MD / DE / DC
MAY 2009 SUMMARY**

OBSERVER	STATION COUNTY, STATE	TEMPERATURE									PEAK WIND			PRECIPITATION					SNOWFALL				OBS TIME		
		AVG MAX	AVG MIN	MEAN	MAX	DAY	MIN	DAY	MAX >=90	MAX <=32	MIN <=32	GUST	DIR	DAY	TOTAL	MAX DAY	DATE	YEAR	DAYS >=.01"	DAYS >=1"	TOTAL	MAX DAY		DATE	SEA- SON
	<u>Howard, Maryland</u>																								
Giannola, Rich	Laurel JHU / APL	73.2	54.7	64.0	85	23	39	19	0	0	0	45	WNW	29	6.64	1.44	29	16.94	16	2	0.0	0.0		10.0	2400
	<u>Montgomery, Maryland</u>																								
Berger, Ron	Norbeck 1 S	72.5	54.9	63.7	84	23	37	19	0	0	0				7.90	1.79	26	19.04	18	1	0.0	0.0		10.3	2200
Cohen, Rob	Potomac 4 N	73.5	54.8	64.2	85	23	39	19	0	0	0				8.71	2.07	26	19.70	17	4	0.0	0.0		8.8	2100
Giannola, Rich	Olney 1 S	72.0	54.2	63.1	83	23	39	19	0	0	0				8.64	1.80	2-3	19.70	16	4	0.0	0.0		10.1	2400
Holden, Richard	Clarksburg 2 ENE	72.7	54.3	63.5	85	23	40	19	0	0	0	36	SSE	14	8.06	1.77	26	18.54	20	3					2400
Roth, David	Montgomery Village 1SW	74.9	56.9	65.9	89	23	41	19	0	0	0	13		10	9.66	2.42	26	19.74	18	3					2400
Rossen, Stan	Glenmont 1 NNE	75.2	54.6	64.9	88	23	38	19	0	0	0	21		14	7.72	2.16	26	18.46	19	1	0.0	0.0		8.5	2400
Scafide, Tony	Bethesda	72.3	54.6	63.5	84	9	41	19	0	0	0	15	S	26	6.28	1.86	25	15.87	20	1					2400
Shaw, Kevin	Gaithersburg 2 WNW	74.4	55.5	65.0	87	23	40	19	0	0	0				9.78	2.26	26	19.33	19	5	0.0	0.0		11.7	2400
Terry, Joe	Forest Glen	76.1	55.1	65.6	88	23	39	19	0	0	0	26	W+	9+	9.56	2.99	26	21.10	19	1	0.0	0.0		10.2	2400
	<u>Prince Georges, Maryland</u>																								
Smith, Brian	Oxon Hill	75.4	56.4	65.9	87	9	41	19	0	0	0				8.96	1.50	14	19.76	16	4	0.0	0.0		12.3	2300
	<u>St. Marys, Maryland</u>																								
Abell, Floyd	Hollywood	74.9	56.9	65.9	88	9	41	19	0	0	0	27		7	6.77	1.82	7	17.60	17	2	0.0	0.0		13.2	2400
Zyla, John	Ridge	74.0	57.7	65.9	88	9	46	21	0	0	0	26		17	4.28	1.58	29	15.08	17	1	0.0	0.0		12.0	2400
	<u>Washington, Maryland</u>																								
Hull, Gary	Sharpsburg																	<u>7.15</u>							2400
Hutto, Max	Smithsburg 1.5 SW	73.8	51.7	62.8	88	22	34	19	0	0	0	26	SSW	14	5.57	1.38	4	14.57	19	2	0.0	0.0		8.2	2400
Keefer, Greg	Hagerstown 1 E	73.9	53.8	63.9	88	22	37	19	0	0	0	44	SE	14	5.45	1.38	4	13.47	19	2	0.0	0.0		5.7	2400
Vaughn, Jim	Smithsburg 2 NE	71.7	53.7	62.7	85	22	40	19	0	0	0	56	S	14	4.23	0.91	4	12.48	15	0	0.0	0.0		12.1	2400
	<u>Wicomico, Maryland</u>																								
NWS Salisbury	Wicomico Co. Apt	74.6	53.5	64.1	87	9	32	20	0	0	1	61	WNW	29	5.18	1.84	26	12.46	14	2	0.0	0.0		5.5	2400
	<u>Arlington, Virginia</u>																								
NWS Washington National Airport	National Airport	73.8	57.2	65.5	86	9	45	19	0	0	0	39	SW	9	8.05	1.65	26	17.27	16	2	0.0	0.0		7.5	2400
	<u>Loudon, Virginia</u>																								
NWS Washington Dulles	Dulles Airport	74.8	55.2	65.0	86	9+	38	19	0	0	0	38	S	14	10.26	3.59	26	19.78	18	2	0.0	0.0		8.0	2400
Shaffer, Lance	Sterling 4 N	71.5	56.3	63.9	83	23	42	19	0	0	0				10.48	2.16	26	20.67	16	4	0.0	0.0		10.1	2400
	<u>Tucker, West Virginia</u>																								
Leshner, Dave	Davis 3 SE WV	64.0	46.4	55.2	80	22	31	18+	0	0	2				7.07	1.17	4	30.85	20	2	0.0	0.0		176.5	0700
SECTION AVERAGE*		73.1	54.2	63.7											6.71			16.82						27.4	

*SECTIONAL AVERAGE DOES NOT INCLUDE DATA FROM WEST VIRGINIA.

**OBSERVER FOR LAVALE IS SCOTT LOHR. DATA COMPILED BY NATE MULLINS.

*** DATA FROM DEOS (DELAWARE ENVIROMENTAL OBSERVING SYSTEM) PERMISSION GRANTED FOR USE OF DATA

*** REC= UNIVERSITY OF DELAWARE RESEARCH AND EDUCATION CENTER

NOTES:

M OR UNDERLINE= MISSING DATA

>= INCLUDED IN NEXT DAYS DATA

ITALIC = ESTIMATED DATA

National Weather Service station data listed herein is preliminary and may be subject to change. The data has not been certified and cannot be used in legal actions.

Only reports certified by the National Climatic Data Center in Asheville, NC may be used for these purposes.

Accuracy of Data from ACON Observers not guaranteed.

GARY GALLAHER 6/27/09

ACON MD / DE / DC
MAY 2009 DAILY TEMPERATURES

STATION	1	2	3	4	5	6	7	8	9	10	11	12	13	14	15	16	17	18	19	20	21	22	23	24	25	26	27	28	29	30	31	AVG	OBS TIME
BEAR 2 SW, DE	73	65	58	54	61	64	72	78	83	72	63	68	70	75	80	79	70	61	70	76	80	82	85	81	83	69	76	78	77	77	81	72.9	2400
GALLAHER	56	57	54	51	51	53	54	52	63	55	45	43	38	54	63	63	51	40	33	40	44	51	56	63	64	51	52	62	59	53	50	52.3	EDT
WILMINGTON , DE	73	65	58	55	60	65	73	76	83	72	63	69	71	75	79	78	68	62	68	78	79	82	85	82	84	70	75	79	77	79	81	73.0	2400
NWS NEW CASTLE CO APT	56	57	54	51	51	53	54	54	61	52	48	46	43	58	64	63	53	42	37	46	47	56	60	65	67	51	52	59	59	55	54	53.8	EST
NEWARK AG FARM, DE	74	66	58	54	60	64	73	80	84	71	63	68	71	76	80	80	69	62	70	78	82	82	86	84	84	69	76	79	78	79	81	73.5	2400
U OF DE DEOS	57	57	54	51	50	52	53	53	62	54	47	46	41	54	64	62	53	44	37	43	47	52	58	65	65	51	52	61	58	55	52	53.1	EDT
TOWNSEND 4 W, DE	73	66	57	54	59	62	71	77	81	71	62	66	70	74	80	79	68	60	69	75	79	80	83	80	80	67	76	78	77	75	78	71.6	2400
U of D REC DEOS	56	56	52	51	50	52	55	58	65	55	50	45	40	55	63	62	52	44	38	43	44	55	64	67	64	52	52	60	59	54	53	53.6	EDT
GEORGETOWN, DE	78	71	58	53	60	65	73	80	88	77	60	69	72	76	80	82	73	61	66	78	81	83	86	82	86	68	79	81	84	83	81	74.6	2400
NWS SUSSEX CO APT	55	55	51	51	51	52	63	58	68	58	51	50	45	54	66	64	54	48	41	42	43	56	64	67	66	57	58	64	66	62	62	56.2	EST
GEORGETOWN, DE	78	71	58	55	61	65	73	79	86	74	58	69	70	75	80	81	72	60	66	77	81	81	84	80	83	69	78	80	84	79	79	73.6	2400
U of D REC DEOS	55	55	52	52	52	53	63	58	67	57	49	50	43	53	66	63	52	48	40	39	42	55	65	67	69	57	57	62	64	59	61	55.6	EDT
HARBESON 8 S, DE	76	70	56	53	61	63	74	78	85	73	58	65	69	73	79	80	70	58	61	73	78	81	83	80	82	66	74	73	81	78	79	71.8	2400
U of D REC DEOS	54	54	50	50	51	52	62	56	65	56	48	48	41	54	64	62	51	45	38	38	41	53	62	66	64	56	56	61	62	59	59	54.1	EDT
FROSTBURG	58	69	62	51	50	49	64	69	72	74	63	55	60	67	72	76	80	54	57	69	78	82	80	81	77	77	52	62	73	69	69	66.8	0700
LATTA	44	47	46	46	45	45	48	48	51	48	43	38	39	41	49	50	45	32	32	35	43	47	58	59	56	52	49	49	56	52	55	46.7	EDT
LAVALE	68	68	56	53	52	59	63	69	76	65	62	61	69	74	77	83	59	59	68	76	80	83	84	83	83	55	60	76	72	75	75	69.1	2400
MULLINS**	53	54	49	50	49	52	54	50	55	54	43	44	39	56	57	58	49	35	34	42	45	56	58	61	55	53	53	60	58	55	55	51.2	EDT
PASADENA 2 N	77	68	60	55	60	64	74	78	87	75	65	71	72	74	81	80	66	64	70	77	79	83	85	84	85	70	74	81	80	81	84	74.2	2400
HANSON	60	60	55	53	52	54	58	55	63	57	52	46	41	59	64	65	56	46	38	42	43	54	61	67	65	56	55	62	61	53	55	55.0	EDT
LOTHIAN		80	71	56	61	74	80	69		85	78	64	72	72	77	79	74	64	65	68	79	81	85	84	84	85	61	75	81	86	84	75.0	0900
JUG BAY		63	53	51	54	54	64	58		55	48	46	38	56	65	60	58	48	36	40	42	56	60	60	62	60	57	60	68	54	54	54.5	EDT
BALTIMORE	76	69	60	55	59	64	74	79	84	72	64	68	71	74	79	80	65	62	69	77	80	83	86	83	83	70	72	78	81	78	80	73.4	2400
NWS BWI APT	58	59	55	52	51	54	60	54	63	54	50	44	39	59	64	62	51	43	38	41	44	52	60	65	64	56	55	59	58	55	54	54.0	EST
LAUREL 2 E	76	69	61	56	58	64	71	80	84	72	65	68	72	75	77	81	66	61	72	79	83	85	87	81	81	70	70	76	76	78	79	73.3	2400
STOUDT	60	61	55	52	51	54	61	56	64	56	52	49	44	58	66	64	52	46	41	45	47	56	65	67	67	56	56	61	60	57	58	56.0	EST
OWINGS MILLS 2SE	71	67	61	55	57	64	72	78	81	72	65	67	71	73	78	77	65	60	70	78	82	82	84	83	84	69	68	75	79	77	80	72.4	2400
SHARROW	56	56	52	51	48	51	55	53	60	52	51	46	41	55	61	62	53	45	37	43	46	52	57	63	64	51	51	57	62	52	54	52.8	EDT
BALTIMORE 2SE	77	69	62	56	60	66	75	78	87	74	67	70	72	74	80	81	67	64	70	76	81	85	88	85	84	72	74	79	80	81	82	74.7	1800
MANFRE	60	61	55	52	51	56	58	62	65	58	53	51	51	61	66	67	58	53	48	52	54	59	66	68	70	56	55	66	63	59	60	58.5	EDT
BALT INNER HARBOR	76	69	62	56	61	66	75	78	87	75	67	70	72	74	80	81	67	63	69	76	80	85	88	85	84	72	72	79	79	81	83	74.6	2400
MD SCIENCE CENTER	60	60	55	52	51	56	58	61	65	58	53	51	51	61	66	67	58	53	48	52	54	59	66	68	70	56	55	66	63	59	60	58.5	EST
MANCHESTER 1SW	69	68	60	53	57	67	71	75	80	68	63	65	69	72	79	77	64	59	68	77	80	84	84	83	81	70	66	75	78	74	78	71.4	2300
CLOSE	54	53	48	47	46	50	53	53	60	45	48	41	48	52	59	60	46	41	41	46	54	54	64	61	67	47	48	58	59	52	53	51.9	EDT
WESTMINSTER 4 SSE	73	72	66	54	64	71	75	80	83	70	68	67	68	72	78	81	65	60	69	74	77	85	86	85	79	67	70	77	79	79	78	73.3	1900
HARTSOCK	58	55	51	51	48	52	62	53	61	50	48	43	38	54	59	61	54	43	35	41	44	49	62	62	61	51	50	56	61	51	51	52.1	EDT
MILLERS 4NE	68	66	64	53	56	66	71	75	79	77	64	64	68	71	78	77	73	59	68	76	80	82	83	81	81	71	65	74	76	74	77	71.5	1800
MILLER	55	54	51	51	48	52	54	53	58	49	45	44	38	54	57	61	51	44	34	42	46	52	58	62	62	49	49	58	60	52	49	51.4	EDT
BRYANS ROAD 2 ESE	79	71	60	57	60	65	78	80	88	78	63	70	74	78	79	83	66	66	72	78	82	85	85	82	84	70	77	84	86	83	82	75.6	2400
BRUMBACK	58	60	54	53	52	55	62	55	65	58	44	48	43	58	64	65	53	45	35	43	44	58	63	67	69	59	58	60	62	55	58	55.5	EDT
EMMITSBURG 2 SE	60	71	68	56	54	58	69	73	77	80	69	63	66	70	74	77	75	61	62	67	76	80	83	83	81	83	56	64	78	78	74	70.5	0630
GLASS	50	57	55	52	50	50	53	53	55	51	48	42	39	40	56	57	57	45	37	40	43	47	54	63	62	55	52	53	54	56	53	50.9	EDT

**ACON MD / DE / DC
MAY 2009 DAILY TEMPERATURES**

STATION	1	2	3	4	5	6	7	8	9	10	11	12	13	14	15	16	17	18	19	20	21	22	23	24	25	26	27	28	29	30	31	AVG	OBS TIME	
EAGLE ROCK	60	64	49	50	50	54	64	62	72	70	72	60	62	70	78	82	80	56	60	72	79	82	86	82	82	82	54	72	79	69	70	68.5	0800	
HARVEY	46	46	42	42	42	42	52	52	64	44	42	34	36	50	48	56	40	26	34	44	44	54	60	60	58	50	48	52	59	48	50	47.3	EST	
LAUREL JHU / APL	75	68	61	55	59	64	72	78	84	72	63	66	70	75	81	81	65	59	71	78	81	83	85	83	82	69	73	77	81	77	80	73.2	2400	
GIANNOLA	58	59	53	51	49	53	60	56	64	54	50	47	42	57	64	65	53	44	39	43	45	54	65	67	64	54	60	60	56	56	54.7	EDT		
NORBECK 1 S	72	67	61	56	58	66	69	76	81	73	63	65	72	73	79	78	66	62	71	78	82	83	84	81	84	69	68	78	78	75	78	72.5	2200	
BERGER	59	61	54	53	51	54	60	53	63	55	51	47	40	58	64	64	53	46	37	42	45	55	62	66	65	55	55	60	62	54	58	54.9	EDT	
POTOMAC 4N	73	68	62	56	60	69	71	78	84	76	64	66	72	76	79	81	65	62	71	76	81	83	85	82	83	68	70	80	80	78	80	73.5	2100	
COHEN	58	60	54	53	50	53	59	52	62	55	52	47	41	59	64	65	55	48	39	42	45	53	59	64	63	56	55	60	63	55	58	54.8	EDT	
OLNEY 1 S	73	72	60	55	57	65	70	>	82	72	63	67	69	73	77	78	64	60	68	76	80	82	83	81	81	69	69	78	79	78	79	72.0	2400	
GIANNOLA	58	60	53	52	50	53	59	>	54	53	51	46	43	58	64	64	52	44	39	43	47	55	61	65	65	54	54	60	59	53	56	54.2	EDT	
CLARKSBURG 2ENE	73	66	60	54	60	70	72	78	81	71	62	66	72	75	80	81	64	61	69	76	80	82	85	82	81	68	69	80	79	77	79	72.7	2400	
HOLDEN	57	56	52	50	49	52	61	55	61	52	49	45	50	56	62	63	50	44	40	48	50	56	63	64	65	54	53	60	58	53	54	54.3	EST	
MONTGOMERY VILLAGE	74	68	63	57	61	70	73	80	87	73	66	68	73	77	80	82	66	63	71	78	82	84	89	86	86	69	72	82	84	80	82	74.9	2400	
ROTH 1SW	59	60	54	53	52	56	63	56	65	58	53	49	44	59	66	66	54	47	41	45	49	58	64	68	67	55	56	63	64	58	59	56.9	EDT	
GLENMONT 1NNE	76	67	61	56	60	68	75	83	87	76	66	68	75	78	82	84	66	61	74	81	85	85	88	84	85	68	69	79	82	80	81	75.2	2400	
ROSSEN	59	60	55	52	51	55	61	53	62	54	53	46	41	59	65	63	52	43	38	42	46	53	59	65	64	56	56	60	59	54	57	54.6	EST	
BETHESDA	75	67	60	55	59	67	70	77	84	72	64	66	70	74	78	80	61	61	69	75	78	81	83	81	82	66	71	80	80	78	80	72.3	2400	
SCAFIDE	60	60	53	51	51	54	55	54	58	56	47	44	44	59	65	58	49	42	41	46	49	58	64	66	65	56	55	62	59	55	58	54.6	EDT	
GAITHERSBURG 2WNW	74	68	61	56	61	69	70	78	83	74	66	68	73	75	83	82	65	62	72	81	84	86	87	83	85	69	70	80	80	80	82	74.4	2400	
SHAW	59	60	54	53	51	54	61	54	62	56	52	47	42	59	64	64	53	46	40	44	47	56	62	66	66	57	56	61	60	55	58	55.5	EDT	
FOREST GLEN	77	68	61	56	61	70	74	81	86	76	66	70	77	80	83	83	66	65	74	80	83	86	88	85	85	70	75	81	85	82	84	76.1	2400	
TERRY	59	61	55	52	51	54	61	53	62	53	51	47	42	59	65	65	52	44	39	43	46	56	62	67	66	56	55	60	59	54	58	55.1	EDT	
OXON HILL	78	68	60	57	61	66	76	81	87	76	63	69	74	78	80	84	67	64	71	79	82	85	86	83	83	70	77	83	84	81	84	75.4	2300	
SMITH	59	60	55	53	51	54	62	54	64	58	50	49	44	59	64	64	56	45	41	45	46	58	62	67	67	58	57	62	67	58	58	56.4	EDT	
HOLLYWOOD	79	70	61	60	60	67	78	79	88	77	61	70	72	77	80	83	67	63	69	75	80	83	84	79	82	70	78	81	86	81	81	74.9	2359	
ABELL	58	60	54	54	53	63	63	58	65	60	52	47	45	56	66	64	52	46	41	43	43	58	65	68	69	60	58	62	64	56	61	56.9	EDT	
RIDGE	82	72	61	62	58	67	78	76	88	78	59	71	72	76	77	81	66	60	68	73	76	81	81	79	80	72	77	78	83	81	82	74.0	2400	
ZYLA	64	60	52	50	53	53	64	60	63	62	50	49	49	63	65	66	50	50	47	48	46	52	61	69	68	63	61	65	65	58	63	57.7	EDT	
SHARPSBURG																																		2400
HULL																																		EDT
SMITHSBURG 1.5 SW	74	70	58	54	60	71	76	79	81	68	64	67	73	77	82	79	65	63	72	80	84	88	87	84	83	69	67	79	80	76	79	73.8	2400	
HUTTO	57	56	52	51	50	53	60	49	59	49	47	42	36	57	55	64	50	39	34	40	43	51	59	65	60	52	53	60	57	53	50	51.7	EDT	
HAGERSTOWN 1E	73	70	61	54	59	69	76	79	82	71	65	67	72	77	80	77	65	63	71	79	82	88	87	85	83	70	66	79	82	78	80	73.9	2400	
KEEFER	57	57	53	52	51	54	60	52	61	53	49	45	40	58	58	65	54	44	37	43	46	54	63	66	63	52	53	60	60	55	54	53.8	EDT	
SMITHSBURG 2 NE	71	68	61	54	58	68	73	75	79	66	61	64	70	74	80	76	66	60	68	76	80	85	83	83	81	70	66	78	77	75	77	71.7	2400	
VAUGHN	56	56	52	51	49	53	61	53	62	52	48	42	43	57	57	65	49	41	40	45	49	57	64	67	62	51	52	61	60	57	54	53.7	EDT	
SALISBURY	79	74	60	58	61	66	75	79	87	75	59	72	71	76	81	82	72	61	66	75	79	81	83	80	83	71	80	82	84	80	80	74.6	2400	
NWS WICOMICO CO APT	54	55	53	51	52	54	61	56	67	55	48	45	38	48	63	58	51	43	35	32	35	47	63	65	68	60	58	62	63	59	59	53.5	EDT	
WASH NATIONAL	77	69	61	56	60	65	72	76	86	75	62	68	72	76	77	82	66	62	71	75	79	81	85	80	82	71	74	83	81	80	83	73.8	2400	
NWS ASOS	59	60	55	53	52	55	60	55	62	57	52	48	49	58	65	64	54	50	45	50	51	60	64	68	68	58	57	64	64	58	57	57.2	EST	
WASH DULLES	77	68	60	56	61	67	73	80	86	74	65	68	73	78	81	83	66	63	71	77	82	85	86	83	85	71	73	81	83	80	83	74.8	2400	
NWS ASOS	58	59	54	54	52	55	59	51	64	56	51	46	41	58	65	66	55	43	38	41	47	55	63	66	65	58	58	61	61	54	57	55.2	EST	
STERLING 4 N	74	66	58	56	59	66	72	73	82	71	64	65	70	75	78	79	66	61	66	75	79	81	83	80	81	70	66	75	74	75	76	71.5	2400	
SHAFFER	58	60	56	55	52	55	61	53	63	56	52	47	44	58	65	66	55	48	42	45	48	55	63	66	65	58	57	61	65	59	56.3	EDT		
DAVIS 3 SE WV	60	58	51	49	46	54	63	56	69	69	56	54	56	65	71	76	76	50	53	68	76	80	75	76	73	74	58	73	73	63	63	64.0	0700	
LESHER	48	45	45	44	41	41	47	48	51	42	38	34	34	43	51	53	38	31	31	37	53	53	57	56	59	58	50	56	58	47	49	46.4	EDT	

**ACON MD / DE / DC
MAY 2009 DAILY PRECIPITATION**

STATION	1	2	3	4	5	6	7	8	9	10	11	12	13	14	15	16	17	18	19	20	21	22	23	24	25	26	27	28	29	30	31	TOTAL	OBS TIME				
BEAR 2 SW, DE GALLAHER	0.36	0.06	0.51	0.64	0.63	0.95	0.58		0.09					0.03	0.01	T	0.23									0.15		0.43		0.09	4.76	2400					
WILMINGTON , DE NWS NEW CASTLE CO APT	0.12	0.08	0.57	0.52	0.44	1.01	0.26		0.03					0.13	0.01	0.01	0.10									0.12		T	0.42		0.07	3.89	2400				
NEWARK AG FARM, DE U OF DE DEOS	0.10	0.12	0.69	0.57	0.07	0.40	0.73		0.01					0.06	0.20		0.13									0.13		0.07	0.50		0.06	3.84	2400				
TOWNSEND 4 W, DE U of D REC DEOS	0.02	0.03	0.70	0.84	0.43	0.81	0.57							0.06	0.04	0.04	0.35									0.20		0.01	0.54		0.08	4.72	2400				
GEORGETOWN, DE NWS SUSSEX CO APT	0.18	0.42	0.47	0.50	0.61	0.14	0.54		0.01		T			0.01	0.10		0.28	T							0.67	0.16		T	0.14		0.69	4.92	2400				
GEORGETOWN, DE U of D REC DEOS	0.20	0.14	0.32	0.66	0.57	0.12	0.65		0.17		0.02				0.13		0.22								1.44	0.68			0.09		0.55	5.96	2400				
HARBESON 8 S, DE U of D REC DEOS	0.20	0.09	0.25	0.62	0.51	0.05	0.72		0.21		0.03				0.09		0.34									0.42	0.47		0.01	0.10		0.33	4.44	2400			
FROSTBURG LATTA	0.02	0.35	0.17	1.12	1.29	0.27	0.73	0.01	0.09			0.20			0.07		0.05								0.23	0.18	0.30	0.30	0.17	0.88	0.01		6.44	0700			
LAVALE MULLINS**	0.31	0.06	0.63	2.56	0.24	0.51	0.02	0.06			0.10			0.04		0.11									0.36	0.09	0.05	0.36	0.06	0.16	0.04		5.76	2400			
PASADENA 2N HANSON	0.02		0.60	0.84	0.23	0.79	0.77				0.03			0.02	0.06	0.30	0.20									0.11	1.52	0.03		1.00	0.01	0.17	6.70	2400			
LOTHIAN JUG BAY	>	T	1.49	0.14	0.33	0.12		0.76	>		0.05	0.21			0.94	0.01	0.50	0.01									T	T		T	0.34	0.03	0.10	0.28	0.38	5.69	0900
BWI NWS ASOS	0.02	0.01	0.82	0.84	0.42	1.21	0.56	T	0.02		0.05			0.07	0.02	0.38	0.07									0.32	2.29	T	0.01	1.17		0.14	8.42	2400			
LAUREL 2 E STOUDT	0.03	T	0.68	0.79	0.33	0.79	0.49		0.01		0.22			0.01	0.03	0.40	0.05								0.01	1.71	2.35	0.02	0.04	1.30		0.19	9.45	2400			
OWINGS MILLS 2SE SHARROW	0.12	0.04	0.55	0.91	0.24	0.08	0.53		0.08		T	T		T	0.26	0.22	0.06									0.47	0.04	0.08	0.12		0.08	3.88	2400				
BALTIMORE 2SE MANFRE	0.01	0.02	0.80	0.88	0.40	1.25	1.04		0.04		0.01			0.18	0.11	0.29	0.06									0.21	1.58	0.02	0.03	0.59		0.12	7.64	1800			
BALT INNER HARBOR MD SCIENCE CENTER	0.01	0.02	0.79	0.86	0.43	1.26	0.36		0.02		0.01			0.25	0.20	0.17	0.05									0.21	0.89		0.03	0.69		0.10	6.35	2400			
MANCHESTER 1SW CLOSE	0.50	0.09	0.50	1.51	0.35	0.28	0.14		0.03		0.06	T		0.17	0.01	1.02	0.06									T	0.28	0.02	0.14	0.41		0.01	5.58	2300			
WESTMINSTER 4 SSE HARTSOCK	0.36	0.11	0.48	1.34	0.23	0.18	0.51		0.03		0.05			0.09	0.61		0.36									0.52	0.64	0.05	0.02	0.42		0.05	6.05	1900			
MILLERS 4NE MILLER	0.41	0.08	0.29	1.48	0.13	0.31	0.31		0.02		T	0.01		0.13	0.04	T	0.61									T	0.20	0.02	T	0.80		0.02	4.86	1800			
WESTMINSTER CITY MULLER	0.29	0.25	0.26	1.31	0.20	0.21	0.26	T	0.04		0.12	0.03		0.11	0.40	T	1.09									0.21	0.27	0.03	0.17	0.25		0.05	5.55	1900			
BRYANS ROAD 2 ESE BRUMBACK	0.01	0.05	0.70	0.80	0.33	0.44	0.74	0.01	0.02		0.26	0.01		0.39	0.46	0.79	0.15									1.24	0.50		0.08	0.72	T	0.32	8.02	2400			
EMMITSBURG 2 SE GLASS	T	0.43	T	0.78	0.97	0.24	0.82	0.05	0.04			0.04		T	0.28		0.48										0.33	0.42	0.01	0.95	0.24	0.03	6.11	0630			
																																	0.0	EDT			

ACON MD / DE / DC
MAY 2009 DAILY PRECIPITATION

STATION	1	2	3	4	5	6	7	8	9	10	11	12	13	14	15	16	17	18	19	20	21	22	23	24	25	26	27	28	29	30	31	TOTAL	OBS TIME	
EAGLE ROCK HARVEY	0.10	0.62	0.40	1.50	0.50	0.50	0.67					0.28			0.01		0.22							0.20	0.50	0.10	0.10	1.00	0.24	T	0.21	7.15 0.0	0800 EST	
LAUREL JHU / APL GIANNOLA	0.03		0.73	0.90	0.23	0.37	0.31		0.02		0.17			0.04		0.18	0.06								0.80	1.14	T	0.10	1.44		0.12	6.64 0.0	2400 EDT	
NORBECK 1 S BERGER	0.10	0.02	0.70	0.93	0.27	0.58	0.64		0.01		0.46			0.03		0.46	0.25								0.07	1.79	0.02	0.53	0.87		0.17	7.90 0.0	2200 EDT	
POTOMAC 4N COHEN	0.13	0.03	0.72	1.02	0.29	0.28	1.12				0.38			T	0.03	0.33	0.28							T	0.20	2.07	0.03	0.49	1.15		0.16	8.71 0.0	2100 EDT	
OLNEY 1 S GIANNOLA	0.12	0.03	>	1.80	0.27	>	1.19	>	0.03		0.37			0.05	0.01	>	0.57								0.85	1.60	0.01	0.46	1.14		0.14	8.64 0.0	2400 EDT	
CLARKSBURG 2ENE HOLDEN	0.33	0.06	1.09	1.18	0.26	0.43	0.37		0.02		0.40	0.01		0.05	0.01	0.48	0.03								0.36	1.77	0.03	0.63	0.42		0.13	8.06 0.0	2400 EST	
MONTGOMERY VILLAGE ROTH 1SW	0.19	0.03	1.00	0.94	0.30	0.69	0.14		0.02		0.22	0.03		0.07		0.54									0.85	2.42	0.04	0.91	1.14		0.13	9.66 0.0	2400 EDT	
GLENMONT 1NNE ROSSEN	0.06	0.01	0.86	0.77	0.29	0.85	0.24	T	0.02		0.42			0.01	0.09	0.38	0.03								0.16	2.16	0.02	0.71	0.49		0.15	7.72 0.0	2400 EST	
BETHESDA SCAFIDE	0.02	0.04	0.97	0.30	0.19	0.07	0.21	0.01	0.01		0.41			0.02	0.01	0.41	0.01								1.86	0.49	0.03	0.39	0.68		0.15	6.28 -	2400 EDT	
GAITHERSBURG 2WNW SHAW	0.22	0.05	1.14	1.03	0.31	0.42	0.34		0.01		0.33			0.04	0.03	0.50	0.08								1.38	2.26	0.02	0.31	1.17		0.14	9.78 0.0	2400 EDT	
FOREST GLEN TERRY	0.03	0.01	0.68	0.86	0.28	0.47	0.77		0.01		0.46			0.01	0.05	0.61	0.14								0.98	2.99	0.02	0.47	0.53		0.19	9.56 0.0	2400 EDT	
OXON HILL SMITH	0.01	0.03	0.65	1.06	0.35	0.86	1.12		0.01		0.42			1.50	0.20	0.13	0.50									1.41			0.41		0.30	8.96 0.0	2300 EDT	
HOLLYWOOD ABELL	0.05	0.13	0.93	0.54	1.39	0.25	1.82	0.01	0.31		0.09					0.03	0.39							T	0.05	0.06		0.08	0.36	T	0.28	6.77 0.0	2359 EDT	
RIDGE ZYLA	0.06	0.08	0.24	0.25	0.53	0.16	0.85		0.08		0.12				0.01	0.01	0.23							T	0.01	0.01		0.03	1.58		0.03	4.28 0.0	2400 EDT	
SHARPSBURG HULL																																		2400 EDT
SMITHSBURG 1.5 SW HUTTO	0.53	0.16	0.60	1.38	0.44	1.10	0.11		0.01		0.20	0.01		0.28	0.01	0.18	0.07									0.37	0.02	0.07	0.02		0.01	5.57 0.0	2400 EDT	
HAGERSTOWN 1E KEEFER	0.41	0.09	0.51	1.38	0.43	1.07	0.09		0.02		0.33	0.01		0.22		0.16	0.08								0.05	0.37	0.02	0.14	0.04		0.03	5.45 0.0	2400 EDT	
SMITHSBURG 2 NE VAUGHN	0.12	0.17	0.60	0.91	0.39	0.85	0.08		0.01		0.07			0.29		0.19	0.06									0.27		0.11	0.11				4.23 0.0	2400 EDT
SALISBURY NWS WICOMICO CO APT	0.15	0.03	0.13	0.30	0.66	0.24	0.33		0.04		0.03					T	0.34	T						T	T	1.84		0.06	1.02	0.01	T	5.18 0.0	2400 EDT	
WASH NATIONAL NWS ASOS	T	0.04	0.83	0.60	0.27	0.96	0.53	T	T		0.30			1.05	0.15	0.52	0.03							T	0.02	1.65	T	0.09	0.78		0.23	8.05 0.0	2400 EST	
WASH DULLES NWS ASOS	0.05	0.02	0.84	0.91	0.29	0.67	0.22	T	T		0.47			0.50		0.53	0.01							0.19	0.06	3.59	0.02	1.13	0.60		0.16	10.26 0.0	2400 EST	
STERLING 4 N SHAFFER	0.20	0.02	0.77	1.30	0.18	0.58	0.56	0.02	T		0.46	T		0.07	T	>	0.61							T		2.16	0.07	1.45	1.81	T	0.22	10.48 0.0	2400 EDT	
DAVIS 3 SE WV LESHAR	0.13	0.77	0.22	1.17	0.30	0.31	0.83	0.18	0.09	0.02		0.18			0.12		1.01							0.19		0.34	0.06	0.07	0.11	0.18	0.79	7.07 0.0	0700 EDT	