



<http://www.jhuapl.edu/weather/education/ACONdata.html>

ATLANTIC COAST OBSERVER NETWORK, MD / DE / DC CHAPTER WITH DATA FROM NEARBY AREAS

HEAVIEST MARCH SNOW EVENT SINCE 1999

Temperatures this month averaged around normal but precipitation was below normal for the third consecutive month. Yearly totals at NWS stations were ~50% below normal. Snowfall totals “flip-flopped” from normal, i.e. the heaviest amounts fell in the east and the west saw little snow. The following was taken from **Joe Terry’s Forest Glen** monthly summary: “The month began with the biggest snowstorm of the season and the lowest temperature since mid-January. Less than a week later temperatures were in the upper 70’s and all the snow was melted. Temperatures the rest of the month were more seasonable. No liquid precipitation fell until late on the 13th, and it remained rather dry until the four consecutive rainy days at the end of the month. The bulk of the month’s precipitation occurred in this 4-day period.”

The month began with the heaviest snow event of the season which came in two parts. **Jeff Stoudt of Laurel 1 E** reported that the storm quadrupled his season snowfall total. Precipitation began as rain and sleet in the southern portions and wet snow in the north early on the 1st. After a lull the steady snow began to move north and west during the afternoon and evening. Bands of heavy snow occurred the morning of the 2nd. See page 3 for a report from **Herb Close of Manchester 1 SW**. The snow ended as flurries the afternoon of the 2nd. Temperatures failed to rise above freezing on the 2nd and 3rd as strong winds blew the snow.

Extreme cold for March followed in the wake of the storm. Sub teen minimum temperatures were common on the 2nd and 3rd. Below zero temperatures were reported by two ACON observers: -4° by **Dave Leshar of Davis 3 SE WV**, and -2° by **Rebecca Harvey of Eagle Rock**.

The snow cover was short lived. Warm air began to move into the region on the 5th. 60’s were common on the 6th and 70’s on the 7th and 8th.

Humidity fell to 20% or lower the

afternoon of the 11th. Light snow fell on the 13th southeast of Washington D.C. This was the only other snow reported for the month east of the mountains.

Spring arrived on the 20th. Pre-dawn light rain fell in the far eastern portions. Otherwise it was sunny and cool. Minimum temperatures fell below freezing from the 20th to the 25th and again on the 31st.

Four consecutive days of rain from the 26th to the 29th brought over an inch to most of the region. The heaviest amounts reported by ACON observers were: 1.96” by **Rick Holden of Clarksburg**, 1.81” by **Rob Cohen of Potomac 4 N**, and 1.76” by **Ron Berger of Norbeck 1 SE**. Temperatures rose into the 70’s on the 29th from Carroll County eastwards. Thunderstorms moved thru on the 29th.

EXTREMES REPORTED BY ACON OBSERVERS

MAXIMUM TEMPERATURE

Lothian	80
Hollywood	80
Baltimore 2 SE	79
Bryans Road 2 ESE	79
Ridge	79

MINIMUM TEMPERATURE

Davis 3 SE WV	-4
Eagle Rock	-2
Bear 2 SW DE	3
Frostburg	3

WARMEST AVG. TEMP.

Oxon Hill	45.6
Ridge	45.5
Baltimore 2 SE	45.4
Bryans Road 2 ESE	45.4

COLDEST AVG. TEMP.

Davis 3 SE WV	36.4
Eagle Rock	37.7
Frostburg	38.0

MAXIMUM PRECIPITATION

Ridge	4.28
Hollywood	3.85
Sterling 4 N	3.29

MINIMUM PRECIPITATION

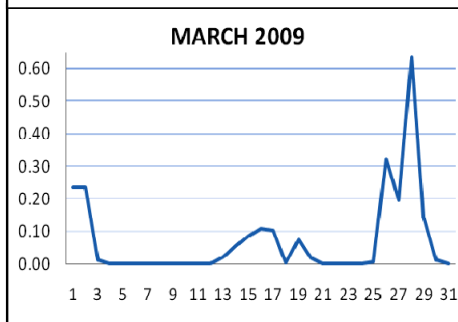
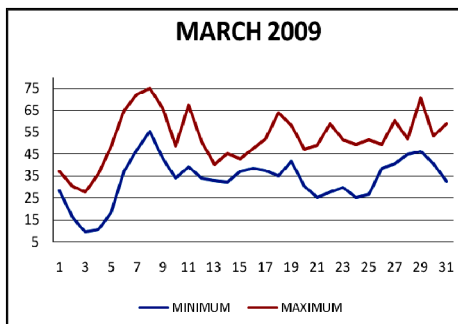
Owings Mills	1.60
LaVale	1.64
Manchester 1 SW	1.66
Hagerstown 1 E	1.66

MAXIMUM SNOWFALL

Hollywood	11.3
Bear 2 SW DE	10.5
Ridge	9.5

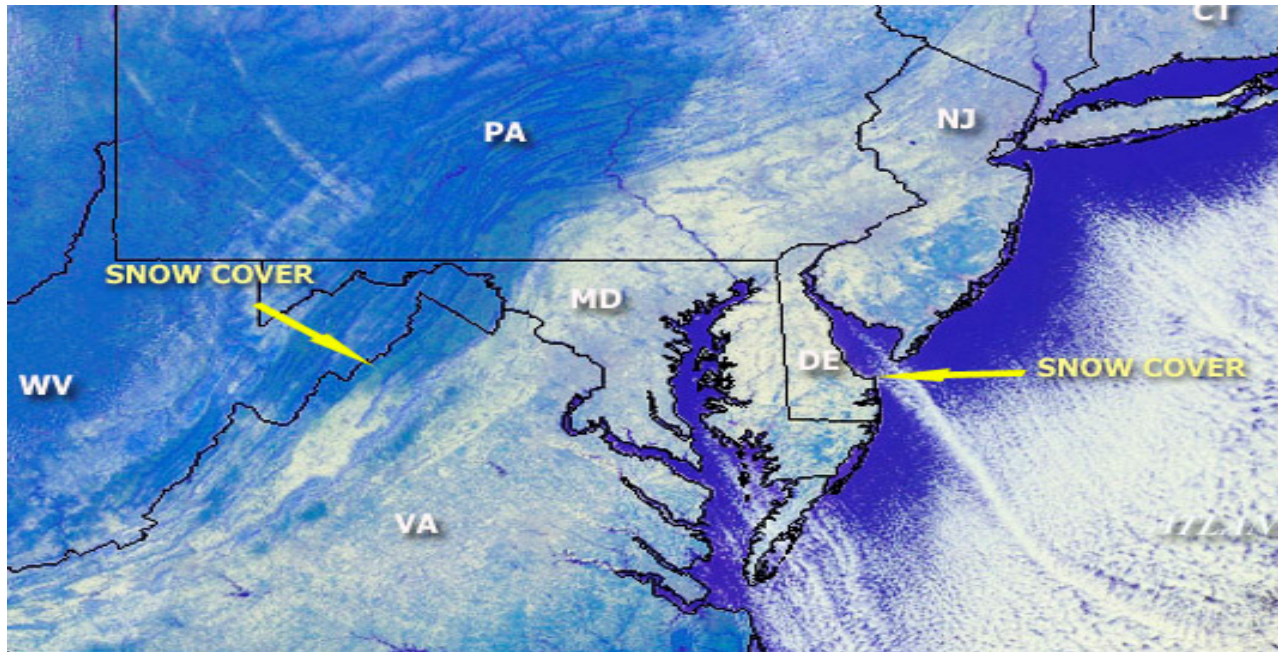
MINIMUM SNOWFALL

Frostburg	0.1
Hagerstown 1 E	0.6



ACON MD/DE Network

Daily average temperatures and precipitation based on observation times, not calendar days.



NOAA-17 SATELITE IMAGE MARCH 3, 2009 AT 15:11:28 UTC

OBSERVER COMMENTS FOR MARCH 2009

Gary Gallaher of Bear 2 SW, DE

Dry cool month. Ground dry enough to till and plant onions and cabbage on the 14th.

1st-2nd - 2nd heaviest March snowstorm in station history.

4th - Very cold, 3° the second coldest ever for March.

Nate Mullins of LaVale

Considerably milder and woefully drier than average.

2nd - 23° Maximum ties for 3rd lowest March max temp.

8th - Daily record high of 74°.

30th - Very windy all day.

Jeff Stoudt of Laurel 2 E

2nd - Snowstorm till early afternoon. +SN 0700-0900 brought a fluffy 4" from only 0.16" liquid equivalent.

28th - -RA/+SHRA before daybreak then -DZ.

Marty Sharrow of Owings Mills

2nd - Snowy AM, windy and bitter cold.

6th - Abundant sunshine and warmer.

31st - Frosty start, lots of sun and mild.

Joe Manfre of Baltimore 2SE

2nd - Snow until mid afternoon, very windy, blowing snow.

8th - Mostly cloudy, very warm.

Ralph Hartsock of Westminster 4 SSE

2nd - Heavy snow, blizzard conditions, windy.

26th - Off and on rain, mostly in the PM.

29th - Partly cloudy, warmer, PM thunderstorms.

Bobby Miller of Millers 4 NE

2nd - Dry drifting snow, 3.0" 0730 - 0830.

6th - Clouds early with virga then mostly sunny afternoon.

18th - Patchy dense fog early, then afternoon clearing.

Ray Muller of Westminster City

2nd - Snow - Visibility down to 1/16 mile at 0800.

9th - Sunny, blustery.

29th - Barometer falls to 29.22"

Marty Brumback of Bryans Road 2 ESE

13th - Light snow 6 - 9 AM, flurries later.

14th - Overcast intermittent light rain and drizzle.

21st - High thin overcast during the day, light winds.

Eric Glass of Emmitsburg 2 SE

29th - Light ground fog.

Rebecca Harvey of Eagle Rock

Maximum snow cover 1" on the 1st - 4th & 30th.

31st - Heavy frost.

Rich Giannola of JHU/APL

2nd - SN in morning with +SN after dawn. SN ending in late morning with -SNSH in afternoon. PWG 40 mph NNW @ 11:05 AM.

Rob Cohen of Potomac 4 N

2nd - Heavy snow 11PM 3/1 to 1 AM and 6 AM - 8 AM.

30th - Windy.

Rich Giannola of Olney 1 S

29th - Temperature drops rapidly with late afternoon FROPA.

Stan Rossen of Glenmont 1 NNE

27th - Dense early morning fog.

Kevin Shaw of Gaithersburg 2 WNW

March was generally mild and dry, but with a few notable periods of exceptions. Early month snowpack short lived.

Continued on Page 3

OBSERVER COMMENTS FOR MARCH 2009

Continued from Page 2

Kevin Shaw of Gaithersburg 2 WNW

7th - Tied maximum temperature of 73 first set in 2000.

14th - Cloudy, not quite as cool, light rain / drizzle mid afternoon and evening.

20th - Sunny most of the day, colder, some clouds AM.

24th - Sunny, seasonably cool - lots of afternoon cirrus clouds.

Joe Terry of Forest Glen

2nd - A period of very heavy snow ensued from 0700 to 0900. About 3 inches of snow fell during this time, mostly

in a 70 minute period from 0700 to 0815 but only produced 0.06 inches melted!

28th - Moderate to heavy rain early then drizzle most of the remainder of the day. Biggest one-day precipitation event since Jan 7th.

Floyd Abell of Hollywood

13th - Morning snow - afternoon and evening rain and sleet at times.

28th - Heavy rain before dawn.

John Zyla of Ridge

1st - Rain: MID-5:45pm=0.47", Snow: 5:45-MID=0.73" liquid.

13th - Rain, MID-2:45am =0.02", Snow, 6:30-9am = 0.1"

Max Hutto of Smithsburg 1.5 SW

29th - Overnight showers, nearby PM t'storms, windy.

Greg Keefer of Hagerstown 1 E

2nd - Periods of light fine snow fell overnight and during part of the morning only 0.1" fell. Strong north winds gusting up to 39 mph caused some blowing snow.

6th - Partly cloudy, breezy, and much warmer. 73° high close to the record of 75° set in 1946.

9th - Cooler, very windy, WNW winds gusting to 49 mph.

11th - Cloudy, windy, much warmer, late afternoon humidity 10% -14%.

Jim Vaughn of Smithsburg 2 NE

Peak wind gusts 40 MPH or higher on the 1st, 2nd, 5th, 9th, 11th, 18th, 29th & 31st.

2nd & 3rd - Wind chill below zero, -6° on the 2nd and -9° on the 3rd.

6th - Max temp of 70 degrees is a new daily high surpassing 66 degrees set in 2004

Lance Shaffer of Sterling 4 N VA

18th - Dense fog.

25th - Frosty start to the day.

31st - AM frost.

Dave Leshner of Davis 3 SE WV

Maximum snow depth 1" on the 1st - 5th, 13th & 30th.

Report from Herb Close of Manchester 1 SW on the March 1st-2nd snowstorm:

Yesterday evening around 9:15 pm, light snow began here at Manchester 1SW, Md. I was disappointed that the snow began so late. I hoped the snow would start in the afternoon or at least by early evening, but the air here and in Pa. was so dry. North and NE winds were blowing in cold, dry air. All evening virga on the radar had overspread north central Maryland and here in Carroll County but no snow falling to the ground. The humidity and DP were low and it took awhile for the air to moist up. By the time the snow did begin, I could see the tail end of the first area of snow moving north with a wide break in the snow below it. I only had 0.8" snow at 11pm obs time. I went to bed not knowing what I would find the next morning. The next morning, I did have a little more snow. At least the grass was covered. At 6:48am, I had 1.5" snow and I did notice on WJZ channel 13 radar a heavy band of snow from the Pa. line to the Va. line across eastern Frederick County and western Carroll County moving slowly eastward. At 6:48am, I noticed the snow had gotten heavier, instead of fine to small flakes, I now had moderate to large flakes. The snow picked up snowing heavy and Visibilities lowered from a 1/4 mile to 1/8 mile. Winds were blowing NNE 10 - 25 mph. By 7:10am, I had very heavy snow, snowing heavy, larger flakes. Vis 1/8 mile. By 7:24am I measured 3.5" snow, (2" in 36 min. or a snowfall rate of almost 4"/hr.) I called my Mom to see how conditions were at Finksburg 2NW and to tell her what I had. It was snowing good there too. After I got off the phone, I went out to measure again at 7:36am just 12 minutes later and now my average depth was 5.0" and the snow was piling up fast!!! (That's 1.5" in 12 minutes or a rate of 7.5"/hr and a new record obs for snowfall rates!)(I also received 3.5" snow in 48 minutes!) I had almost a half a foot! The air was thick with large flakes around 1/2" with some possibly larger. Vis down to 1/16 mile. By 7:58am, I had 6.0" snow! (1" snow in past 22 minutes or a rate of almost 3"/hr.) From just before 7 am to 8 am, I went from 1.5" snow on the ground to 6.0" snow on the ground. I picked up 4" snow in one hour. At 8:24am, I measured 6.5" snow (That's .5" in 26 minutes or about 1"/hr.) After that, the snow slacked up to snow showers and flurries with moderate to small then fine flakes. Snow showers lingered the rest of the morning and early afternoon but very little if any accumulation.

My previous record for intense snowfall was on Feb. 22-23, 1987 when 18" snow fell in 10 hours. Between 11pm to 11:30pm, 2.5" snow fell or 5"/hr for a half hour., then between 11:30pm to 1AM another 6" fell or a snowfall rate of 4"/hr for an hour and half. In that storm, the flakes were large like silver dollars and the air was thick with them.

Compiled by Gary Gallaher, MD/DE ACON Data Collector and Report Writer, from data received from dedicated observers. Without your observations each month this report will not be possible.