



<http://www.jhuapl.edu/weather/education/ACONdata.html>

# ATLANTIC COAST OBSERVER NETWORK, MD / DE / DC CHAPTER WITH DATA FROM NEARBY AREAS

## WET FIRST THREE WEEKS PLEASANT TEMPERATURES

The first month of the 2009 summer began wet. Rainfall was divided between two steady rain events and thunderstorms. Hail was reported by many observers. After the summer solstice very little rain fell. Temperatures averaged out to around normal. Tornadoes occurred on two days: 9th: EF-0 in Dundalk, Baltimore County, and the 20th: EF-1 in Essex, Baltimore County, and EF-0 in Pleasant Hills, Harford County.

The month began with unseasonal cool temperatures. Minimums in the 40's were common.

Temperatures warmed up quickly on the 2nd. 90's were observed at a few of the warmer locations. Late in the afternoon a severe thunderstorm with a 76 MPH wind gust hit Wilmington DE NWS at the New Castle County Airport. **Greg Keefer of Hagerstown 1E** observed a 44 MPH wind gust but only 0.10" of rain.

Thunderstorms dumped over an inch of rain along the I-95 corridor from Baltimore southwards into Northern Virginia on the 3rd. **Joe Terry of Forest Glen** measured 1.65".

A cold steady rain fell on the 4th and 5th. **Floyd Abell of Hollywood** measured 2.09". Temperatures ranged from the mid 50's to the mid 60's.

Temperature in the mid 80's to lower 90's on the 9th fueled thunderstorms, some of which were intense. Hail was reported by the following ACON stations in Maryland: Hagerstown 1E (3/4"), Smithburg 2 NE (pea), Westminster 4 SSE (marble), Owings Mills (penny), White Plains 5.5 WNW (marble).

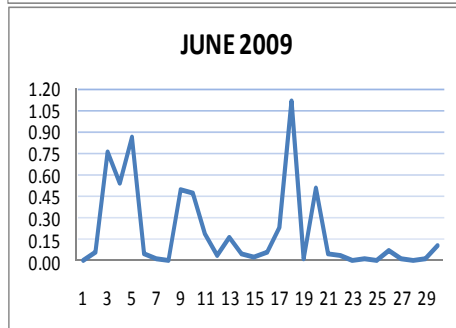
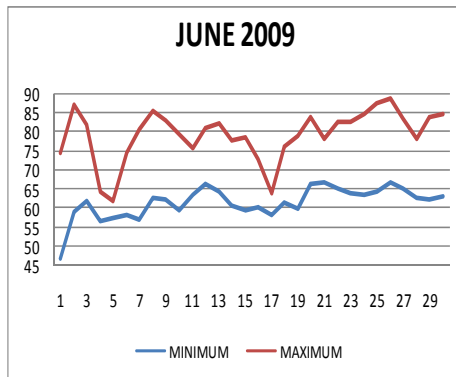
Humid, warm conditions, with temperatures in the mid 70's to mid 80's along with some showers and thunderstorms occurred from the 10th to the 16th. The 17th saw a cool rain with temperatures in the 60's along with some thunder. Maximum temperatures generally in the 80's returned on the 18th and lasted to

the end of the month.

Thunderstorms on the 18th dumped heavy rains upwards of 2 inches plus. **Rebecca Harvey of Eagle Rock** recorded 2.60" along with some hail. **Gary Gallaher of Bear 2SW DE** recorded 1.78" and a peak rainfall rate of 6.62".

The 19th was dry. Showers and thundershowers returned on the 20th, the last day of Spring.

The warmest temperatures of the month occurred on the 25th and 26th. Temperature ranged from the mid 80's to lower 90's. A severe thunderstorm with 1/2" hail was observed by Greg Keefer of Hagerstown 1E on the afternoon of the 26th. The month ended with some light showers on the 30th.



### ACON MD/DE Network

Daily average temperatures and precipitation based on observation times, not calendar days.

### EXTREMES REPORTED BY

#### ACON OBSERVERS

##### MAXIMUM TEMPERATURE

|                         |    |
|-------------------------|----|
| LaVale                  | 93 |
| Baltimore 2 SE          | 93 |
| Montgomery Village 1 SW | 93 |
| 3 Stations              | 92 |

##### MINIMUM TEMPERATURE

|            |    |
|------------|----|
| Eagle Rock | 38 |
| Frostburg  | 39 |

##### WARMEST AVG. TEMP.

|                |      |
|----------------|------|
| Baltimore 2 SE | 74.7 |
| Hollywood      | 73.3 |

##### COLDEST AVG. TEMP.

|               |      |
|---------------|------|
| Davis 3 SE WV | 62.2 |
| Frostburg     | 64.0 |
| Eagle Rock    | 65.0 |

##### MAXIMUM PRECIPITATION

|                |      |
|----------------|------|
| Potomac 4 N    | 7.51 |
| Hagerstown 1 E | 7.42 |

##### MINIMUM PRECIPITATION

|                   |      |
|-------------------|------|
| Manchester 1 SW   | 3.94 |
| Owings Mills 2 SE | 4.26 |

### IMPORTANCE OF ACCURATE DATA

Follow-up from the note concerning accurate data in the May ACON: Record your observation temperature on your form. This temperature must fall within the range of max and min temperature for the following day. Example: The temp. at your obs time of 7 PM on the 7th is 77°. On the 8th afternoon the temperature only reaches a max of 71°. For 8th the maximum temperature is 77°, not 71°. **Do not** adjust your data to match the calendar day or any other nearby station that uses midnight as an obs time. To prevent this problem **Do not** reset your thermometer between obs times.

Thanks! Kevin & Gary.

# OBSERVER COMMENTS FOR JUNE 2009

---

## **Gary Gallaher of Bear 2 SW, DE**

Average barometric pressure of 29.84", lowest for June in 18 years of press records. Old record was 29.87" set in 1998.

1st - Tied record low of 42 set in 1984.

## **Greg Latta of Frostburg**

18th - Morning fog, visibility less than 1/2 mile.

## **Nate Mullins of LaVale**

10th - Strong thunderstorm with frequent lightning 2 - 3 PM.

## **Jeff Stoudt of Laurel 2 E**

Thunderstorms were numerous with some drenching this neighborhood, and others delivered little rain here while drenching some nearby areas.

## **Marty Sharrow of Owings Mills**

1st - Chilly start, sunshine and mild.

4th - Overcast, rainy and quite cool.

18th - Overcast with heavy rain early, then partly cloudy.

26th - Good deal of clouds, warm and humid.

## **Joe Manfre of Baltimore 2SE**

2nd - Variable clouds, hot, moderate humidity.

29th - Warm, low humidity.

## **Ralph Hartsock of Westminster 4 SSE**

5th - Soaking all day rain.

9th - Marble size hail in PM.

10th - Late very heavy thunderstorms, hail, flooding.

## **Bobby Miller of Millers 4 NE**

11th - Dense fog - visibility 1/8 mile at 8 AM.

15th - Dense fog - visibility 1/8 mile at 7 AM.

21st - Light AM shower, PM variable clouds & windy.

## **Ray Muller of Westminster City**

10th - Thunderstorm 1810 - 1908. PWG 35 mph, visibility down to ¼ mile, 3 MB press rise in 15 minutes during storm.

11th - Thunderstorm, ½" hail reported outside city but none here.

## **Marty Brumback of White Plains 5.5 WNW**

Station name changed from Bryans Road 2 ESE on June 1st.

9th - Thunderstorm 5:50 - 7:55 PM dumped 0.48" rain plus marble size hail after 6 PM lasting 7 minutes.

22nd - Double rainbow and anti-crepuscular rays 8 PM.

## **Eric Glass of Emmitsburg 2 SE**

26th - Hazy, cloudy and humid.

## **Rebecca Harvey of Eagle Rock**

18th - Thunder and hail.

## **Rich Giannola of JHU/APL**

9th - +TSRA began just before 5:00 PM, moving from NW to SE. Peak wind gust 50 MPH from NW at 4:49 PM. High and low temperatures for the day were separated by 39 minutes (88° at 4:31 PM and 60° at 5:10 PM).

## **Rob Cohen of Potomac 4 N**

18th - Heavy rain 5 to 6 AM 1.60".

## **Rich Giannola of Olney 1 S**

4th—5th -RA morning into early evening = 0.37", stopping by 8:15 PM. RA began again shortly thereafter continuing into evening on the 5th = 0.96" more.

## **Stan Rossen of Glenmont 1 NNE**

Fourth wettest June since records began 8/4/79. Only 2006 (13.85"), 2003 (7.23"), 1979 (7.10") were wetter.

11th - Dense morning fog - visibility 3/8 mile.

## **Kevin Shaw of Gaithersburg 2 WNW**

1st - Sunny, mild, pretty nice. First sub 50° June temperature since 6/2/2003.

16th - Cloudy, cooler, east winds.

25th - Sunny, hot.

## **Joe Terry of Forest Glen**

1st - 47° minimum was the fifth coolest June temperature in 15 years station history.

9th - Late afternoon thunderstorm with impressive gust front and mammatus along with close lightning. Temperature dropped 24 degrees with storm.

26th - Early evening thunderstorm, very brief, with one good gust of wind that was accompanied by about 5 minutes of pea sized hail.

## **Floyd Abell of Hollywood**

Only 0.25" of rain during the last 12 days.

3rd - Pre-dawn thunderstorm, fair, then evening thunderstorm.

20th - Variable clouds, mid day thunderstorm.

## **John Zyla of Ridge**

26th - 1st humid day. No A/C for 21 days!! - a record!

## **Max Hutto of Smithsburg 1.5 SW**

9th - AM haze, continued very warm, PM thunderstorm with pea sized hail and very windy.

17th - Cloudy, rain most of the day, breezy.

26th - PM severe thunderstorms - we were on the edge.

## **Greg Keefer of Hagerstown 1 E**

9th - Very intense line of severe thunderstorms moved across the area between 3:30 - 4:30 PM with black, ominous skies, frequent lightning, heavy rain, PWG 38 and several rounds of hail up to ¾" here with reports of up to 1.0" in the area.

26th - Intense thunderstorm 3:30 - 4:00 PM with brief heavy rain and hail up to ½ in diameter. Another storm 4:50 - 5:30 PM brought PWG of 43 MPH and hail up to ¾ in diameter. Wind damage to trees on local street. Some reports of golf ball hail in the area.

## **Jim Vaughn of Smithsburg 2 NE**

Third coolest June behind 67.7 set in 1958.

5th - Maximum temperature of 60 tied daily low max set in 2004. It also ties the second lowest max for the month. Record min max 59° set 6/3/1997.

Compiled by Gary Gallaher, MD/DE ACON Data Collector and Report Writer, from data received from dedicated observers. Without your observations each month this report will not be possible.

**ACON MD / DE / DC  
JUNE 2009 SUMMARY**

| OBSERVER                        | STATION<br>COUNTY, STATE | TEMPERATURE |             |             |     |     |     |     |             |             | PEAK WIND   |      |     | PRECIPITATION |       |            |      |       | SNOWFALL       |              |       |            | OBS<br>TIME |      |
|---------------------------------|--------------------------|-------------|-------------|-------------|-----|-----|-----|-----|-------------|-------------|-------------|------|-----|---------------|-------|------------|------|-------|----------------|--------------|-------|------------|-------------|------|
|                                 |                          | AVG<br>MAX  | AVG<br>MIN  | MEAN        | MAX | DAY | MIN | DAY | MAX<br>>=90 | MAX<br><=32 | MIN<br><=32 | GUST | DIR | DAY           | TOTAL | MAX<br>DAY | DATE | YEAR  | DAYS<br>>=.01" | DAYS<br>>=1" | TOTAL | MAX<br>DAY |             | DATE |
| <i>New Castle, Delaware</i>     |                          |             |             |             |     |     |     |     |             |             |             |      |     |               |       |            |      |       |                |              |       |            |             |      |
| Gallaher, Gary                  | Bear 2 SW                | 78.8        | 61.1        | 70.0        | 88  | 26  | 42  | 1   | 0           | 0           | 0           | 30   | NW+ | 2+            | 5.17  | 1.78       | 18   | 20.32 | 14             | 1            | 0.0   | 0.0        | 16.1        | 2400 |
| NWS Wilmington                  | New Castle Co. Apt.      | 78.9        | 62.1        | 70.5        | 88  | 26  | 47  | 1   | 0           | 0           | 0           | 76   | NW  | 2             | 6.67  | 1.81       | 18   | 19.68 | 13             | 2            | 0.0   | 0.0        | 16.1        | 2400 |
| UofDE AG FARM DEOS***           | Newark                   | 78.9        | 61.4        | 70.2        | 89  | 26  | 46  | 1   | 0           | 0           | 0           | 22   |     | 2             | 5.81  | 1.59       | 18   | 19.54 | 11             | 1            |       |            |             | 2400 |
| U of D REC DEOS***              | Townsend 4 W             | 77.8        | 61.1        | 69.5        | 88  | 26  | 44  | 1   | 0           | 0           | 0           | 35   |     | 9             | 5.16  | 1.26       | 3    | 19.42 | 11             | 2            |       |            |             | 2400 |
| <i>Sussex, Delaware</i>         |                          |             |             |             |     |     |     |     |             |             |             |      |     |               |       |            |      |       |                |              |       |            |             |      |
| NWS Georgetown                  | Sussex Co. Airport       | 81.2        | 64.4        | 72.8        | 91  | 26+ | 53  | 1   | 3           | 0           | 0           | 49   | NNE | 22            | 5.58  | 1.48       | 18   | 21.21 | 13             | 2            |       |            |             | 2400 |
| U of D REC DEOS***              | Georgetown 5 SW          | 79.1        | 62.8        | 71.0        | 88  | 2+  | 50  | 1   | 0           | 0           | 0           | 27   |     | 22            | 5.47  | 2.34       | 18   | 21.41 | 12             | 1            |       |            |             | 2400 |
| U of D REC DEOS***              | Harbeson 8 S             | 77.6        | 61.9        | 69.8        | 89  | 26  | 52  | 1   | 0           | 0           | 0           | 19   |     | 30            | 4.92  | 1.66       | 18   | 19.98 | 11             | 2            |       |            |             | 2400 |
| <i>Allegany, Maryland</i>       |                          |             |             |             |     |     |     |     |             |             |             |      |     |               |       |            |      |       |                |              |       |            |             |      |
| Latta, Greg                     | Frostburg                | 73.0        | 54.9        | 64.0        | 83  | 26  | 39  | 1   | 0           | 0           | 0           |      |     |               | 5.84  | 1.91       | 18   | 22.97 | 12             | 2            | 0.0   | 0.0        | 42.7        | 0700 |
| Mullins, Nate**                 | LaVale                   | 77.4        | 59.7        | 68.6        | 93  | 25  | 44  | 1   | 3           | 0           | 0           |      |     |               | 5.78  | 1.96       | 17   | 21.34 | 12             | 2            | 0.0   | 0.0        | 20.9        | 2400 |
| <i>Anne Arundel, Maryland</i>   |                          |             |             |             |     |     |     |     |             |             |             |      |     |               |       |            |      |       |                |              |       |            |             |      |
| Hanson, Dan                     | Pasadena 2 N             | 81.7        | 62.9        | 72.3        | 91  | 2+  | 54  | 1   | 3           | 0           | 0           | 28   | W   | 9             | 6.38  | 1.05       | 16   | 24.25 | 14             | 1            | 0.0   | 0.0        | 8.9         | 2400 |
| Jug Bay Wetlands                | Lothian                  | <u>84.1</u> | <u>62.8</u> | <u>73.5</u> | 92  | 3+  | 46  | 2   | 3           | 0           | 0           |      |     |               | 5.56  | 1.12       | 5    | 20.38 | 13             | 1            | 0.0   | 0.0        | 7.8         | 0900 |
| NWS Baltimore                   | BWI Airport              | 80.6        | 62.2        | 71.4        | 89  | 25+ | 46  | 1   | 0           | 0           | 0           | 40   | NW  | 9             | 5.52  | 1.77       | 18   | 24.80 | 12             | 2            | 0.0   | 0.0        | 8.5         | 2400 |
| Stoudt, Jeff                    | Laurel 2 E               | 79.4        | 64.7        | 72.1        | 89  | 26  | 49  | 1   | 0           | 0           | 0           |      |     |               | 6.18  | 1.57       | 18   | 27.45 | 12             | 2            | 0.0   | 0.0        | 11.0        | 2400 |
| <i>Baltimore, Maryland</i>      |                          |             |             |             |     |     |     |     |             |             |             |      |     |               |       |            |      |       |                |              |       |            |             |      |
| Sharrow, Marty                  | Owings Mills 2 SE        | 79.8        | 60.7        | 70.3        | 88  | 9+  | 45  | 1   | 0           | 0           | 0           |      |     |               | 4.26  | 0.98       | 18   | 18.14 | 12             | 0            | 0.0   | 0.0        | 14.8        | 2400 |
| <i>Baltimore City, Maryland</i> |                          |             |             |             |     |     |     |     |             |             |             |      |     |               |       |            |      |       |                |              |       |            |             |      |
| Manfre, Joe                     | Baltimore 2 SE           | 82.5        | 67.1        | 74.8        | 93  | 26  | 58  | 1   | 3           | 0           | 0           |      |     |               | 5.39  | 1.45       | 3    | 24.11 | 13             | 2            | 0.0   | 0.0        | 6.5         | 1800 |
| Maryland Science Ctr            | Baltimore Inner Harbor   | 82.4        | 66.9        | 74.7        | 93  | 26  | 58  | 1   | 3           | 0           | 0           |      |     |               | 4.85  | 1.34       | 3    | 22.26 | 13             | 1            |       |            |             | 2400 |
| <i>Carroll, Maryland</i>        |                          |             |             |             |     |     |     |     |             |             |             |      |     |               |       |            |      |       |                |              |       |            |             |      |
| Close Jr, Herb                  | Manchester 1 SW          | 78.9        | 58.2        | 68.6        | 87  | 25+ | 46  | 1   | 0           | 0           | 0           |      |     |               | 3.94  | 0.68       | 5    | 18.14 | 15             | 0            | 0.0   | 0.0        | 17.5        | 2300 |
| Hartsock, Ralph                 | Westminster 4 SSE        | 79.6        | 59.8        | 69.7        | 89  | 9   | 44  | 1   | 0           | 0           | 0           |      |     |               | 5.16  | 1.00       | 5    | 21.47 | 12             | 1            | 0.0   | 0.0        | 15.4        | 1900 |
| Miller, Bobby                   | Millers 4 NE             | 77.6        | 59.2        | 68.4        | 85  | 26  | 44  | 1   | 0           | 0           | 0           |      |     |               | 4.41  | 0.78       | 5    | 18.71 | 13             | 0            | 0.0   | 0.0        | 18.6        | 1800 |
| Muller, Ray                     | Westminster City         | 79.7        | 61.2        | 70.5        | 90  | 26  | 46  | 1   | 1           | 0           | 0           |      |     |               | 5.81  | 2.23       | 10   | 19.43 | 13             | 1            | 0.0   | 0.0        | 15.5        | 1900 |
| <i>Charles, Maryland</i>        |                          |             |             |             |     |     |     |     |             |             |             |      |     |               |       |            |      |       |                |              |       |            |             |      |
| Brumback, Marty ****            | White Plains 5.5 WNW     | 82.3        | 64.1        | 73.2        | 92  | 2   | 50  | 1   | 4           | 0           | 0           | 40   | SW  | 9             | 6.24  | 1.27       | 9    | 24.52 | 14             | 1            | 0.0   | 0.0        | 10.4        | 2400 |
| <i>Frederick, Maryland</i>      |                          |             |             |             |     |     |     |     |             |             |             |      |     |               |       |            |      |       |                |              |       |            |             |      |
| Glass, Eric                     | Emmitsburg 2 SE          | 78.2        | 59.6        | 68.9        | 87  | 26  | 45  | 1   | 0           | 0           | 0           |      |     |               | 5.97  | 1.66       | 10   | 20.72 | 11             | 2            | 0.0   | 0.0        | 6.8         | 0700 |
| <i>Garrett, Maryland</i>        |                          |             |             |             |     |     |     |     |             |             |             |      |     |               |       |            |      |       |                |              |       |            |             |      |
| Harvey, Rebecca                 | Eagle Rock               | 75.1        | 54.8        | 65.0        | 84  | 26  | 38  | 1   | 0           | 0           | 0           |      |     |               | 6.90  | 2.60       | 18   | 29.00 | 10             | 2            | 0.0   | 0.0        | 118.3       | 0800 |

**ACON MD /DE / DC  
JUNE 2009 SUMMARY**

| OBSERVER                | STATION<br>COUNTY, STATE        | TEMPERATURE |             |             |     |     |     |     |             |             | PEAK WIND   |      |     | PRECIPITATION |             |            |              |              | SNOWFALL       |              |            |            | OBS<br>TIME |      |
|-------------------------|---------------------------------|-------------|-------------|-------------|-----|-----|-----|-----|-------------|-------------|-------------|------|-----|---------------|-------------|------------|--------------|--------------|----------------|--------------|------------|------------|-------------|------|
|                         |                                 | AVG<br>MAX  | AVG<br>MIN  | MEAN        | MAX | DAY | MIN | DAY | MAX<br>>=90 | MAX<br><=32 | MIN<br><=32 | GUST | DIR | DAY           | TOTAL       | MAX<br>DAY | DATE         | YEAR         | DAYS<br>>=.01" | DAYS<br>>=1" | TOTAL      | MAX<br>DAY |             | DATE |
|                         | <i>Howard, Maryland</i>         |             |             |             |     |     |     |     |             |             |             |      |     |               |             |            |              |              |                |              |            |            |             |      |
| Giannola, Rich          | Laurel JHU / APL                | 80.3        | 62.6        | 71.5        | 90  | 26  | 47  | 1   | 1           | 0           | 0           | 50   | NW  | 9             | 6.64        | 1.78       | 18           | 23.58        | 10             | 2            | 0.0        | 0.0        | 10.0        | 2400 |
|                         | <i>Montgomery, Maryland</i>     |             |             |             |     |     |     |     |             |             |             |      |     |               |             |            |              |              |                |              |            |            |             |      |
| Berger, Ron             | Norbeck 1 SE                    | 79.3        | 62.6        | 71.0        | 89  | 25+ | 46  | 1   | 0           | 0           | 0           |      |     |               | 6.41        | 1.88       | 18           | 25.45        | 15             | 1            | 0.0        | 0.0        | 10.3        | 2200 |
| Cohen, Rob              | Potomac 4 N                     | 80.0        | 62.2        | 71.1        | 88  | 2+  | 47  | 1   | 0           | 0           | 0           |      |     |               | 7.51        | 1.88       | 18           | 27.21        | 13             | 3            | 0.0        | 0.0        | 8.8         | 2100 |
| Giannola, Rich          | Olney 1 S                       | 79.8        | 61.9        | 70.9        | 88  | 26  | 47  | 1   | 0           | 0           | 0           |      |     |               | 5.95        | 2.36       | -            | 25.65        | 10             | 2            | 0.0        | 0.0        | 10.1        | 2400 |
| Holden, Richard         | Clarksburg 2 ENE                | 79.4        | 61.2        | 70.3        | 87  | 2+  | 47  | 1   | 0           | 0           | 0           | 42   | N   | 9             | 5.75        | 1.30       | 18           | 24.29        | 14             | 2            | 0.0        | 0.0        |             | 2400 |
| Roth, David             | Montgomery Village 1SW          | <u>82.6</u> | <u>63.6</u> | <u>73.1</u> | 93  | 25  | 50  | 1   | 4           | 0           | 0           |      |     |               | <u>4.65</u> | 1.40       | 5            | <u>24.39</u> | 11             | 2            |            |            |             | 2400 |
| Rossen, Stan            | Glenmont 1 NNE                  | 80.8        | 62.3        | 71.6        | 91  | 26  | 47  | 1   | 1           | 0           | 0           |      |     |               | 6.26        | 1.61       | 18           | 24.72        | 13             | 2            | 0.0        | 0.0        | 8.5         | 2400 |
| Scafide, Tony           | Bethesda                        | 79.5        | 63.3        | 71.4        | 87  | 2+  | 50  | 1   | 0           | 0           | 0           | 21   | WSW | 20            | 6.02        | 1.28       | 5            | 21.89        | 11             | 3            |            |            |             | 2400 |
| Shaw, Kevin             | Gaithersburg 2 WNW              | 82.5        | 63.0        | 72.8        | 92  | 26  | 49  | 1   | 4           | 0           | 0           |      |     |               | 4.68        | 0.96       | 5            | 24.01        | 15             | 0            | 0.0        | 0.0        | 11.7        | 2400 |
| Terry, Joe              | Forest Glen                     | 83.3        | 62.6        | 73.0        | 92  | 25+ | 47  | 1   | 5           | 0           | 0           | 28   | NNW | 9             | 7.11        | 1.65       | 3            | 28.21        | 15             | 2            | 0.0        | 0.0        | 10.2        | 2400 |
|                         | <i>Prince Georges, Maryland</i> |             |             |             |     |     |     |     |             |             |             |      |     |               |             |            |              |              |                |              |            |            |             |      |
| Smith, Brian            | Oxon Hill                       | 82.2        | 64.5        | 73.4        | 90  | 2+  | 51  | 1   | 3           | 0           | 0           |      |     |               | 6.43        | 1.39       | 3            | 26.19        | 14             | 2            | 0.0        | 0.0        | 12.3        | 2300 |
|                         | <i>St. Marys, Maryland</i>      |             |             |             |     |     |     |     |             |             |             |      |     |               |             |            |              |              |                |              |            |            |             |      |
| Abell, Floyd            | Hollywood                       | 81.7        | 64.8        | 73.3        | 91  | 2   | 54  | 1   | 1           | 0           | 0           | 28   |     | 9             | 4.49        | 1.09       | 5            | 22.09        | 14             | 2            | 0.0        | 0.0        | 13.2        | 2400 |
| Zyla, John              | Ridge                           | 79.8        | 66.6        | 73.2        | 90  | 2   | 61  | 1   | 1           | 0           | 0           | 23   | NW  | 9             | 4.94        | 0.95       | 9            | 20.02        | 12             | 0            | 0.0        | 0.0        | 12.0        | 2400 |
|                         | <i>Washington, Maryland</i>     |             |             |             |     |     |     |     |             |             |             |      |     |               |             |            |              |              |                |              |            |            |             |      |
| Hull, Gary              | Sharpsburg                      |             |             |             |     |     |     |     |             |             |             |      |     |               |             |            |              | <u>7.15</u>  |                |              |            |            |             | 2400 |
| Hutto, Max              | Smithsburg 1.5 SW               | 80.0        | 58.8        | 69.4        | 89  | 25  | 41  | 1   | 0           | 0           | 0           | 38   | S   | 9             | 6.24        | 0.99       | 5            | 20.81        | 16             | 0            | 0.0        | 0.0        | 8.2         | 2400 |
| Keefer, Greg            | Hagerstown 1 E                  | 81.3        | 61.7        | 71.5        | 90  | 9+  | 45  | 1   | 2           | 0           | 0           | 44   | W   | 2             | 7.42        | 1.25       | 9            | 20.89        | 14             | 1            | 0.0        | 0.0        | 5.7         | 2400 |
| Vaughn, Jim             | Smithsburg 2 NE                 | 77.6        | 60.7        | 69.2        | 86  | 2+  | 44  | 1   | 0           | 0           | 0           | 57   | W   | 2             | 6.24        | 1.10       | 9            | 18.72        | 11             | 2            | 0.0        | 0.0        | 12.1        | 2400 |
|                         | <i>Wicomico, Maryland</i>       |             |             |             |     |     |     |     |             |             |             |      |     |               |             |            |              |              |                |              |            |            |             |      |
| NWS Salisbury           | Wicomico Co. Apt                | 80.0        | 62.2        | 71.1        | 89  | 2   | 51  | 1   | 0           | 0           | 0           | 40   | W   | 3             | 6.57        | 1.79       | 13           | 19.03        | 13             | 2            | 0.0        | 0.0        | 5.5         | 2400 |
|                         | <i>Arlington, Virginia</i>      |             |             |             |     |     |     |     |             |             |             |      |     |               |             |            |              |              |                |              |            |            |             |      |
| NWS Washington Nation:  | National Airport                | 81.5        | 65.8        | 73.7        | 91  | 25  | 55  | 1   | 2           | 0           | 0           | 48   | N   | 26            | 5.86        | 1.50       | 3            | 23.13        | 11             | 2            | 0.0        | 0.0        | 7.5         | 2400 |
|                         | <i>Loudon, Virginia</i>         |             |             |             |     |     |     |     |             |             |             |      |     |               |             |            |              |              |                |              |            |            |             |      |
| NWS Washington Dulles   | Dulles Airport                  | 82.6        | 63.6        | 73.1        | 91  | 2+  | 48  | 1   | 2           | 0           | 0           | 36   | N   | 9             | 6.69        | 2.69       | 3            | 26.47        | 10             | 2            | 0.0        | 0.0        | 8.0         | 2400 |
| Shaffer, Lance          | Sterling 4 N                    | 78.9        | 63.9        | 71.4        | 86  | 2+  | 49  | 1   | 0           | 0           | 0           |      |     |               | 6.76        | 1.82       | 10           | 27.43        | 14             | 3            | 0.0        | 0.0        | 10.1        | 2400 |
|                         | <i>Tucker, West Virginia</i>    |             |             |             |     |     |     |     |             |             |             |      |     |               |             |            |              |              |                |              |            |            |             |      |
| Leshner, Dave           | Davis 3 SE WV                   | 71.2        | 53.2        | 62.2        | 77  | 3+  | 39  | 1   | 0           | 0           | 0           |      |     |               | 4.95        | 1.68       | 5            | 35.80        | 12             | 1            | 0.0        | 0.0        | 176.5       | 0700 |
| <b>SECTION AVERAGE*</b> |                                 | <b>79.9</b> | <b>62.1</b> | <b>71.0</b> |     |     |     |     |             |             |             |      |     |               | <b>5.80</b> |            | <b>22.62</b> |              |                |              | <b>0.0</b> |            | <b>27.4</b> |      |

\*SECTIONAL AVERAGE DOES NOT INCLUDE DATA FROM WEST VIRGINIA.

\*\*OBSERVER FOR LAVALE IS SCOTT LOHR. DATA COMPILED BY NATE MULLINS.

\*\*\* DATA FROM DEOS (DELAWARE ENVIROMENTAL OBSERVING SYSTEM) PERMISSION GRANTED FOR USE OF DATA

\*\*\* REC= UNIVERSITY OF DELAWARE RESEARCH AND EDUCATION CENTER

\*\*\*\* = ID CHANGED 6/1/09 WAS BRYANS ROAD 2 ESE

National Weather Service station data listed herein is preliminary and may be subject to change. The data has not been certified and cannot be used in legal actions.

Only reports certified by the National Climatic Data Center in Asheville, NC may be used for these purposes.

Accuracy of Data from ACON Observers not guaranteed.

**NOTES:**

M OR UNDERLINE= MISSING DATA

> = INCLUDED IN NEXT DAYS DATA

*ITALIC* = ESTIMATED DATA

GARY GALLAHER 7/29/09

REV 9/28/09

**ACON MD / DE / DC**  
**JUNE 2009 DAILY TEMPERATURES**

| STATION               | 1  | 2  | 3  | 4  | 5  | 6  | 7  | 8  | 9  | 10 | 11 | 12 | 13 | 14 | 15 | 16 | 17 | 18 | 19 | 20 | 21 | 22 | 23 | 24 | 25 | 26 | 27 | 28 | 29 | 30   | AVG  | OBS TIME |      |
|-----------------------|----|----|----|----|----|----|----|----|----|----|----|----|----|----|----|----|----|----|----|----|----|----|----|----|----|----|----|----|----|------|------|----------|------|
| BEAR 2 SW, DE         | 73 | 85 | 78 | 63 | 61 | 76 | 80 | 85 | 82 | 81 | 72 | 84 | 82 | 79 | 77 | 69 | 68 | 75 | 79 | 79 | 79 | 83 | 82 | 84 | 86 | 88 | 82 | 83 | 84 | 85   | 78.8 | 2400     |      |
| GALLAHER              | 42 | 57 | 59 | 57 | 57 | 58 | 55 | 61 | 64 | 58 | 65 | 68 | 66 | 64 | 59 | 59 | 56 | 62 | 59 | 62 | 68 | 65 | 65 | 65 | 64 | 68 | 63 | 63 | 61 | 62   | 61.1 | EDT      |      |
| WILMINGTON , DE       | 71 | 86 | 78 | 63 | 62 | 76 | 81 | 84 | 81 | 82 | 73 | 85 | 81 | 80 | 76 | 70 | 69 | 72 | 79 | 78 | 79 | 84 | 83 | 83 | 84 | 88 | 83 | 85 | 84 | 86   | 78.9 | 2400     |      |
| NWS NEW CASTLE CO APT | 47 | 60 | 58 | 57 | 57 | 58 | 58 | 65 | 65 | 60 | 65 | 68 | 65 | 63 | 62 | 58 | 57 | 62 | 60 | 64 | 67 | 64 | 66 | 66 | 67 | 69 | 64 | 63 | 63 | 65   | 62.1 | EST      |      |
| NEWARK AG FARM, DE    | 74 | 86 | 78 | 64 | 59 | 76 | 81 | 85 | 81 | 82 | 71 | 84 | 81 | 80 | 78 | 68 | 67 | 77 | 78 | 79 | 78 | 83 | 82 | 84 | 88 | 89 | 81 | 81 | 84 | 88   | 78.9 | 2400     |      |
| U OF DE DEOS          | 46 | 58 | 58 | 56 | 56 | 58 | 57 | 62 | 64 | 59 | 65 | 68 | 64 | 63 | 61 | 59 | 56 | 62 | 60 | 62 | 66 | 65 | 66 | 67 | 66 | 67 | 64 | 63 | 62 | 63   | 61.4 | EDT      |      |
| TOWNSEND 4 W, DE      | 72 | 83 | 78 | 62 | 61 | 73 | 79 | 83 | 81 | 80 | 73 | 83 | 80 | 78 | 75 | 69 | 66 | 75 | 77 | 79 | 79 | 82 | 81 | 82 | 86 | 88 | 81 | 79 | 84 | 86   | 77.8 | 2400     |      |
| U of D REC DEOS       | 44 | 59 | 58 | 56 | 56 | 57 | 55 | 63 | 63 | 59 | 65 | 69 | 65 | 63 | 59 | 58 | 57 | 63 | 60 | 61 | 68 | 64 | 65 | 64 | 65 | 70 | 64 | 60 | 61 | 63   | 61.1 | EDT      |      |
| GEORGETOWN, DE        | 74 | 90 | 82 | 66 | 65 | 74 | 81 | 87 | 82 | 84 | 83 | 87 | 82 | 78 | 76 | 72 | 69 | 76 | 82 | 85 | 82 | 83 | 84 | 85 | 84 | 91 | 87 | 86 | 87 | 91   | 81.2 | 2400     |      |
| NWS SUSSEX CO APT     | 53 | 59 | 65 | 59 | 60 | 60 | 58 | 61 | 66 | 63 | 65 | 71 | 66 | 63 | 62 | 59 | 59 | 65 | 66 | 65 | 71 | 68 | 67 | 72 | 69 | 68 | 73 | 67 | 66 | 66   | 64.4 | EST      |      |
| GEORGETOWN, DE        | 74 | 88 | 81 | 65 | 63 | 73 | 80 | 85 | 82 | 83 | 82 | 85 | 74 | 76 | 77 | 71 | 69 | 75 | 80 | 86 | 78 | 81 | 78 | 81 | 84 | 88 | 83 | 82 | 84 | 86   | 79.1 | 2400     |      |
| U of D REC DEOS       | 50 | 58 | 64 | 58 | 58 | 58 | 60 | 64 | 62 | 64 | 71 | 68 | 62 | 61 | 59 | 58 | 64 | 65 | 65 | 69 | 66 | 64 | 67 | 66 | 66 | 66 | 68 | 63 | 64 | 64   | 62.8 | EDT      |      |
| HARBESON 8 S, DE      | 70 | 88 | 79 | 64 | 62 | 72 | 78 | 86 | 78 | 80 | 80 | 85 | 72 | 74 | 72 | 68 | 66 | 76 | 80 | 84 | 78 | 79 | 78 | 80 | 77 | 89 | 83 | 82 | 84 | 88   | 77.6 | 2400     |      |
| U of D REC DEOS       | 52 | 57 | 63 | 58 | 57 | 58 | 56 | 59 | 64 | 62 | 63 | 69 | 65 | 61 | 60 | 59 | 58 | 63 | 64 | 63 | 67 | 65 | 63 | 66 | 66 | 65 | 66 | 63 | 64 | 62   | 61.9 | EDT      |      |
| FROSTBURG             | 67 | 74 | 79 | 73 | 52 | 55 | 73 | 79 | 77 | 78 | 71 | 67 | 73 | 73 | 75 | 77 | 72 | 61 | 72 | 76 | 75 | 74 | 76 | 78 | 83 | 78 | 74 | 77 | 75 | 73.0 | 0700 |          |      |
| LATTA                 | 39 | 40 | 58 | 48 | 48 | 51 | 50 | 52 | 57 | 60 | 57 | 58 | 58 | 51 | 52 | 55 | 56 | 56 | 59 | 61 | 62 | 59 | 57 | 58 | 58 | 64 | 57 | 57 | 54 | 54   | 54.9 | EDT      |      |
| LAVALE                | 75 | 84 | 74 | 56 | 56 | 80 | 77 | 83 | 84 | 77 | 69 | 74 | 77 | 77 | 78 | 72 | 66 | 76 | 77 | 82 | 75 | 81 | 82 | 91 | 93 | 90 | 81 | 75 | 85 | 75   | 77.4 | 2400     |      |
| MULLINS**             | 44 | 61 | 56 | 52 | 54 | 56 | 52 | 59 | 65 | 64 | 61 | 64 | 61 | 55 | 58 | 57 | 59 | 63 | 59 | 68 | 61 | 65 | 60 | 57 | 61 | 68 | 63 | 61 | 60 | 67   | 59.7 | EDT      |      |
| PASADENA 2 N          | 74 | 91 | 83 | 63 | 62 | 76 | 80 | 86 | 84 | 81 | 77 | 87 | 85 | 83 | 81 | 75 | 67 | 81 | 84 | 86 | 82 | 86 | 84 | 87 | 91 | 91 | 85 | 83 | 87 | 87   | 81.7 | 2400     |      |
| HANSON                | 54 | 62 | 62 | 58 | 59 | 59 | 57 | 63 | 64 | 60 | 67 | 70 | 68 | 63 | 62 | 62 | 60 | 64 | 61 | 65 | 68 | 69 | 66 | 62 | 63 | 68 | 65 | 63 | 62 | 62   | 62.9 | EDT      |      |
| LOTHIAN               | M  | M  | 92 | M  | 83 | M  | 76 | M  | 87 | 85 | 81 | 81 | 89 | M  | 84 | 83 | 76 | 71 | 79 | 87 | 85 | 81 | 86 | 85 | 88 | 91 | 92 | 87 | M  | 85   | 84.1 | 0900     |      |
| JUG BAY               | M  | 46 | 65 | M  | 60 | M  | 57 | 57 | 67 | 59 | 67 | 69 | 67 | 66 | 61 | 67 | 62 | 64 | 60 | 66 | 67 | 63 | 64 | 61 | 63 | 68 | 65 | 61 | M  | 61   | 62.8 | EDT      |      |
| BALTIMORE             | 75 | 87 | 83 | 64 | 62 | 76 | 81 | 84 | 86 | 80 | 76 | 85 | 82 | 81 | 81 | 73 | 66 | 79 | 83 | 86 | 79 | 85 | 84 | 87 | 89 | 89 | 85 | 80 | 84 | 87   | 80.6 | 2400     |      |
| NWS BWI APT           | 46 | 59 | 62 | 58 | 59 | 59 | 55 | 64 | 64 | 60 | 67 | 69 | 65 | 62 | 61 | 61 | 61 | 64 | 60 | 66 | 68 | 66 | 66 | 64 | 63 | 67 | 67 | 61 | 62 | 61   | 62.2 | EST      |      |
| LAUREL 2 E            | 75 | 88 | 81 | 63 | 63 | 75 | 80 | 84 | 83 | 79 | 76 | 83 | 83 | 79 | 81 | 73 | 66 | 77 | 81 | 83 | 78 | 83 | 82 | 83 | 87 | 89 | 82 | 77 | 84 | 83   | 79.4 | 2400     |      |
| STOUDT                | 49 | 62 | 63 | 59 | 59 | 59 | 61 | 67 | 65 | 62 | 68 | 70 | 68 | 66 | 63 | 62 | 61 | 64 | 63 | 69 | 70 | 68 | 68 | 67 | 67 | 73 | 70 | 65 | 67 | 66   | 64.7 | EST      |      |
| OWINGS MILLS 2SE      | 75 | 86 | 82 | 61 | 60 | 75 | 82 | 87 | 88 | 82 | 73 | 84 | 84 | 80 | 83 | 72 | 63 | 76 | 81 | 82 | 75 | 82 | 85 | 88 | 87 | 86 | 84 | 79 | 84 | 87   | 79.8 | 2400     |      |
| SHARROW               | 45 | 59 | 61 | 56 | 55 | 56 | 56 | 62 | 62 | 59 | 66 | 67 | 65 | 62 | 59 | 62 | 57 | 59 | 58 | 63 | 62 | 63 | 64 | 64 | 62 | 66 | 66 | 63 | 61 | 61   | 60.7 | EDT      |      |
| BALTIMORE 2SE         | 77 | 91 | 83 | 65 | 64 | 78 | 83 | 86 | 89 | 81 | 78 | 87 | 84 | 83 | 82 | 75 | 67 | 81 | 84 | 89 | 81 | 86 | 85 | 88 | 92 | 93 | 85 | 83 | 86 | 89   | 82.5 | 1800     |      |
| MANFRE                | 58 | 65 | 62 | 60 | 60 | 62 | 62 | 68 | 67 | 66 | 68 | 72 | 69 | 66 | 66 | 64 | 62 | 66 | 66 | 71 | 72 | 70 | 70 | 71 | 72 | 74 | 73 | 71 | 69 | 70   | 67.1 | EDT      |      |
| BALT INNER HARBOR     | 75 | 91 | 83 | 65 | 64 | 78 | 82 | 86 | 89 | 81 | 78 | 88 | 85 | 82 | 83 | 74 | 67 | 81 | 84 | 89 | 81 | 86 | 85 | 87 | 92 | 93 | 85 | 83 | 87 | 89   | 82.4 | 2400     |      |
| MD SCIENCE CENTER     | 58 | 65 | 62 | 60 | 60 | 60 | 61 | 67 | 67 | 66 | 68 | 72 | 70 | 68 | 68 | 63 | 62 | 66 | 66 | 70 | 70 | 70 | 70 | 71 | 71 | 74 | 73 | 71 | 69 | 70   | 66.9 | EST      |      |
| MANCHESTER 1SW        | 72 | 84 | 80 | 59 | 60 | 74 | 79 | 85 | 86 | 81 | 70 | 81 | 81 | M  | M  | M  | M  | M  | 80 | 78 | 81 | 75 | 82 | 80 | 84 | 87 | 87 | 80 | 81 | 82   | 83   | 78.9     | 2300 |
| CLOSE                 | 46 | 57 | 55 | 51 | 52 | 54 | 59 | 61 | 60 | 58 | 60 | 66 | M  | M  | M  | M  | M  | 54 | 57 | 56 | 62 | 61 | 61 | 60 | 60 | 64 | M  | 61 | 60 | 58   | 61   | 58.2     | EDT  |
| WESTMINSTER 4 SSE     | 75 | 85 | 76 | 65 | 60 | 75 | 79 | 85 | 89 | 83 | 74 | 83 | 84 | 76 | 81 | 77 | 65 | 82 | 81 | 85 | 77 | 82 | 80 | 84 | 88 | 88 | 81 | 81 | 84 | 83   | 79.6 | 1900     |      |
| HARTSOCK              | 44 | 57 | 62 | 54 | 57 | 55 | 54 | 60 | 59 | 59 | 61 | 67 | 63 | 61 | 55 | 61 | 58 | 60 | 63 | 63 | 64 | 62 | 62 | 61 | 64 | 66 | 63 | 60 | 59 | 59   | 59.8 | EDT      |      |
| MILLERS 4NE           | 73 | 83 | 78 | 64 | 59 | 74 | 79 | 83 | 84 | 79 | 69 | 80 | 80 | 79 | 79 | 78 | 64 | 79 | 76 | 81 | 78 | 81 | 79 | 82 | 84 | 85 | 81 | 77 | 80 | 80   | 77.6 | 1800     |      |
| MILLER                | 44 | 57 | 61 | 53 | 54 | 56 | 55 | 61 | 65 | 58 | 62 | 67 | 63 | 60 | 55 | 60 | 56 | 58 | 56 | 61 | 63 | 63 | 62 | 62 | 62 | 67 | 61 | 59 | 59 | 57   | 59.2 | EDT      |      |
| WESTMINSTER CITY      | 76 | 88 | 84 | 64 | 61 | 76 | 81 | 84 | 88 | 80 | 73 | 83 | 82 | 78 | 80 | 74 | 66 | 75 | 80 | 84 | 78 | 84 | 84 | 85 | 86 | 90 | 84 | 78 | 82 | 84   | 79.7 | 1900     |      |
| MULLER                | 46 | 60 | 64 | 55 | 56 | 58 | 55 | 65 | 62 | 60 | 61 | 68 | 64 | 62 | 59 | 63 | 59 | 61 | 61 | 66 | 64 | 63 | 62 | 63 | 62 | 70 | 63 | 62 | 60 | 62   | 61.2 | EDT      |      |
| WHITE PLAINS 5.5 WNW  | 76 | 92 | 85 | 67 | 63 | 77 | 82 | 90 | 85 | 82 | 83 | 87 | 87 | 84 | 82 | 76 | 68 | 80 | 84 | 87 | 78 | 85 | 84 | 87 | 90 | 90 | 85 | 76 | 86 | 87   | 82.3 | 2400     |      |
| BRUMBACK ****         | 50 | 61 | 65 | 60 | 60 | 60 | 59 | 65 | 63 | 62 | 68 | 70 | 70 | 65 | 64 | 63 | 61 | 66 | 62 | 70 | 69 | 67 | 65 | 64 | 65 | 69 | 67 | 65 | 65 | 62   | 64.1 | EDT      |      |
| EMMITSBURG 2 SE       | 77 | 72 | 85 | 78 | 59 | 64 | 75 | 79 | 84 | 85 | 79 | 74 | 81 | 80 | 79 | 80 | 73 | 66 | 80 | 80 | 82 | 76 | 83 | 82 | 85 | 87 | 85 | 81 | 74 | 81   | 78.2 | 0700     |      |
| GLASS                 | 45 | 47 | 61 | 53 | 54 | 56 | 55 | 61 | 65 | 59 | 60 | 64 | 65 | 62 | 56 | 57 | 60 | 60 | 59 | 60 | 65 | 65 | 62 | 62 | 61 | 64 | 66 | 60 | 61 | 63   | 59.6 | EDT      |      |

**ACON MD / DE / DC**  
**JUNE 2009 DAILY TEMPERATURES**

| STATION             | 1  | 2  | 3  | 4  | 5  | 6  | 7  | 8  | 9  | 10 | 11 | 12 | 13 | 14 | 15 | 16 | 17 | 18 | 19 | 20 | 21 | 22 | 23 | 24 | 25 | 26 | 27 | 28 | 29 | 30   | AVG  | OBS TIME |
|---------------------|----|----|----|----|----|----|----|----|----|----|----|----|----|----|----|----|----|----|----|----|----|----|----|----|----|----|----|----|----|------|------|----------|
| EAGLE ROCK          | 70 | 78 | 82 | 76 | 50 | 56 | 74 | 80 | 80 | 80 | 79 | 75 | 74 | 76 | 76 | 80 | 72 | 69 | 72 | 82 | 74 | 70 | 74 | 79 | 82 | 84 | 80 | 78 | 74 | 76   | 75.1 | 0800     |
| HARVEY              | 38 | 54 | 56 | 46 | 48 | 50 | 50 | 56 | 62 | 63 | 58 | 54 | 56 | 48 | 60 | 58 | 52 | 54 | 60 | 58 | 60 | 58 | 52 | 52 | 60 | 62 | 52 | 54 | 54 | 60   | 54.8 | EDT      |
| LAUREL JHU / APL    | 75 | 89 | 84 | 62 | 61 | 77 | 82 | 88 | 88 | 81 | 77 | 84 | 84 | 79 | 83 | 73 | 64 | 81 | 83 | 85 | 76 | 82 | 81 | 85 | 88 | 90 | 81 | 76 | 85 | 84   | 80.3 | 2400     |
| GIANNOLA            | 47 | 61 | 61 | 57 | 58 | 58 | 60 | 64 | 60 | 61 | 66 | 70 | 65 | 63 | 60 | 61 | 59 | 62 | 61 | 67 | 66 | 66 | 64 | 65 | 68 | 72 | 67 | 64 | 63 | 63   | 62.6 | EDT      |
| NORBECK 1 SE        | 74 | 86 | 81 | 65 | 61 | 72 | 80 | 84 | 86 | 79 | 76 | 84 | 81 | 80 | 83 | 75 | 65 | 78 | 80 | 82 | 75 | 82 | 84 | 85 | 89 | 89 | 83 | 73 | 83 | 83   | 79.3 | 2200     |
| BERGER              | 46 | 61 | 65 | 58 | 59 | 59 | 56 | 64 | 64 | 60 | 66 | 69 | 68 | 63 | 60 | 65 | 60 | 63 | 60 | 68 | 68 | 65 | 62 | 64 | 65 | 68 | 66 | 62 | 62 | 62   | 62.6 | EDT      |
| POTOMAC 4N          | 76 | 88 | 82 | 65 | 62 | 75 | 81 | 85 | 86 | 81 | 78 | 82 | 83 | 80 | 82 | 76 | 67 | 80 | 82 | 83 | 76 | 83 | 83 | 84 | 87 | 88 | 82 | 74 | 84 | 84   | 80.0 | 2100     |
| COHEN               | 47 | 59 | 65 | 58 | 58 | 59 | 55 | 64 | 64 | 60 | 65 | 68 | 66 | 65 | 61 | 66 | 61 | 63 | 59 | 68 | 68 | 65 | 63 | 62 | 63 | 67 | 64 | 62 | 62 | 60   | 62.2 | EDT      |
| OLNEY 1 S           | 74 | 87 | 81 | 65 | 61 | 73 | 81 | 84 | 86 | 79 | 76 | 83 | 82 | 79 | 79 | 73 | >  | >  | >  | 85 | 77 | 83 | 83 | 84 | 87 | 88 | 83 | 74 | 84 | 84   | 79.8 | 2400     |
| GIANNOLA            | 47 | 61 | 65 | 57 | 58 | 58 | 58 | 65 | 62 | 61 | 65 | 68 | 65 | 63 | 60 | 62 | >  | >  | >  | 59 | 66 | 64 | 62 | 62 | 64 | 69 | 64 | 62 | 62 | 63   | 61.9 | EDT      |
| CLARKSBURG 2ENE     | 74 | 87 | 80 | 60 | 61 | 76 | 81 | 85 | 86 | 82 | 78 | 83 | 83 | 79 | 82 | 78 | 63 | 82 | 81 | 84 | 77 | 82 | 82 | 84 | 87 | 87 | 81 | 73 | 83 | 82   | 79.4 | 2400     |
| HOLDEN              | 47 | 60 | 59 | 54 | 57 | 58 | 59 | 64 | 62 | 60 | 64 | 67 | 64 | 61 | 61 | 59 | 58 | 62 | 60 | 68 | 64 | 63 | 62 | 61 | 65 | 69 | 64 | 60 | 61 | 64   | 61.2 | EST      |
| MONTGOMERY VILLAGE  | 76 | 91 | 87 | 64 | 63 | 78 | 85 | 91 | M  | M  | M  | M  | 86 | 84 | 86 | 77 | 66 | 82 | 84 | 88 | 78 | 86 | 87 | 88 | 93 | 92 | 85 | 76 | 87 | 89   | 82.6 | 2400     |
| ROTH 1SW            | 50 | 64 | 64 | 58 | 59 | 61 | 58 | 67 | M  | M  | M  | M  | 70 | 67 | 62 | 64 | 61 | 64 | 62 | 71 | 68 | 66 | 65 | 64 | 65 | 70 | 66 | 63 | 64 | 62   | 63.6 | EDT      |
| GLENMONT 1NNE       | 77 | 89 | 82 | 63 | 62 | 76 | 84 | 89 | 89 | 81 | 78 | 85 | 82 | 81 | 85 | 76 | 66 | 79 | 82 | 85 | 76 | 82 | 82 | 84 | 89 | 91 | 81 | 74 | 87 | 86   | 80.8 | 2400     |
| ROSSEN              | 47 | 62 | 63 | 58 | 59 | 59 | 55 | 64 | 64 | 61 | 67 | 68 | 66 | 63 | 60 | 62 | 61 | 64 | 60 | 67 | 68 | 66 | 63 | 62 | 64 | 67 | 65 | 62 | 62 | 61   | 62.3 | EST      |
| BETHESDA            | 74 | 87 | 83 | 62 | 62 | 75 | 80 | 85 | 85 | 81 | 78 | 83 | 82 | 80 | 80 | 74 | 66 | 80 | 81 | 84 | 77 | 83 | 83 | 84 | 86 | 87 | 82 | 74 | 84 | 84   | 79.5 | 2400     |
| SCAFIDE             | 50 | 62 | 62 | 58 | 59 | 60 | 59 | 65 | 63 | 61 | 66 | 69 | 68 | 65 | 63 | 63 | 61 | 64 | 61 | 70 | 68 | 66 | 66 | 64 | 65 | 69 | 65 | 63 | 63 | 64   | 63.3 | EDT      |
| GAITHERSBURG 2WNW   | 78 | 91 | 85 | 63 | 62 | 79 | 86 | 89 | 91 | 82 | 79 | 85 | 85 | 85 | 84 | 77 | 66 | 82 | 85 | 86 | 79 | 86 | 85 | 88 | 91 | 92 | 85 | 75 | 87 | 86   | 82.5 | 2400     |
| SHAW                | 49 | 61 | 63 | 58 | 59 | 60 | 56 | 65 | 64 | 62 | 66 | 69 | 67 | 64 | 61 | 65 | 62 | 64 | 61 | 69 | 68 | 65 | 64 | 63 | 64 | 68 | 66 | 63 | 62 | 62   | 63.0 | EDT      |
| FOREST GLEN         | 79 | 91 | 88 | 65 | 63 | 79 | 85 | 90 | 91 | 84 | 80 | 87 | 86 | 83 | 85 | 77 | 67 | 83 | 86 | 86 | 80 | 88 | 87 | 88 | 92 | 92 | 86 | 76 | 87 | 87   | 83.3 | 2400     |
| TERRY               | 47 | 61 | 65 | 58 | 59 | 59 | 57 | 64 | 63 | 61 | 66 | 69 | 67 | 64 | 61 | 63 | 60 | 64 | 60 | 69 | 68 | 65 | 64 | 63 | 64 | 68 | 64 | 62 | 62 | 61   | 62.6 | EDT      |
| OXON HILL           | 76 | 90 | 85 | 68 | 63 | 78 | 84 | 88 | 88 | 83 | 82 | 86 | 85 | 83 | 83 | 76 | 67 | 80 | 84 | 88 | 78 | 86 | 87 | 87 | 90 | 90 | 85 | 76 | 86 | 85   | 82.2 | 2300     |
| SMITH               | 51 | 62 | 65 | 59 | 59 | 60 | 58 | 65 | 63 | 61 | 67 | 70 | 70 | 66 | 64 | 62 | 61 | 65 | 61 | 71 | 69 | 68 | 68 | 67 | 70 | 69 | 69 | 65 | 65 | 64   | 64.5 | EDT      |
| HOLLYWOOD           | 77 | 91 | 84 | 67 | 65 | 73 | 81 | 88 | 86 | 83 | 84 | 86 | 86 | 81 | 82 | 77 | 69 | 80 | 84 | 85 | 79 | 84 | 84 | 86 | 88 | 89 | 84 | 75 | 85 | 89   | 81.7 | 2359     |
| ABELL               | 54 | 61 | 65 | 60 | 60 | 59 | 58 | 65 | 66 | 61 | 70 | 70 | 71 | 64 | 64 | 64 | 63 | 68 | 63 | 69 | 70 | 67 | 66 | 64 | 65 | 70 | 70 | 66 | 66 | 64   | 64.8 | EDT      |
| RIDGE               | 74 | 90 | 79 | 64 | 66 | 71 | 77 | 85 | 77 | 79 | 84 | 86 | 82 | 78 | 81 | 77 | 70 | 79 | 82 | 82 | 78 | 82 | 78 | 83 | 88 | 88 | 84 | 76 | 86 | 89   | 79.8 | 2400     |
| ZYLA                | 61 | 64 | 63 | 61 | 62 | 66 | 62 | 68 | 67 | 63 | 71 | 71 | 69 | 66 | 67 | 66 | 65 | 68 | 66 | 70 | 65 | 67 | 67 | 67 | 70 | 71 | 70 | 68 | 70 | 68   | 66.6 | EDT      |
| SHARPSBURG          |    |    |    |    |    |    |    |    |    |    |    |    |    |    |    |    |    |    |    |    |    |    |    |    |    |    |    |    |    |      |      | 2400     |
| HULL                |    |    |    |    |    |    |    |    |    |    |    |    |    |    |    |    |    |    |    |    |    |    |    |    |    |    |    |    |    |      |      | EDT      |
| SMITHSBURG 1.5 SW   | 74 | 88 | 78 | 59 | 61 | 79 | 83 | 87 | 87 | 79 | 78 | 84 | 84 | 81 | 83 | 77 | 63 | 81 | 83 | 84 | 78 | 85 | 85 | 87 | 89 | 85 | 82 | 74 | 82 | 79   | 80.0 | 2400     |
| HUTTO               | 41 | 59 | 58 | 53 | 56 | 57 | 52 | 60 | 60 | 57 | 62 | 66 | 61 | 57 | 54 | 63 | 61 | 63 | 58 | 67 | 64 | 60 | 58 | 57 | 58 | 65 | 60 | 58 | 57 | 62   | 58.8 | EDT      |
| HAGERSTOWN 1E       | 74 | 89 | 80 | 59 | 61 | 79 | 84 | 87 | 90 | 81 | 80 | 85 | 85 | 81 | 84 | 77 | 65 | 83 | 83 | 87 | 80 | 86 | 85 | 88 | 90 | 88 | 84 | 75 | 86 | 82   | 81.3 | 2400     |
| KEEFER              | 45 | 63 | 58 | 54 | 56 | 58 | 56 | 63 | 63 | 59 | 65 | 69 | 65 | 59 | 60 | 65 | 62 | 64 | 60 | 70 | 68 | 64 | 61 | 61 | 62 | 70 | 63 | 63 | 60 | 66   | 61.7 | EDT      |
| SMITHSBURG 2 NE     | 72 | 86 | 76 | 58 | 60 | 77 | 80 | 84 | 84 | 78 | 76 | 80 | 81 | 78 | 81 | 73 | 64 | 79 | 81 | 82 | 75 | 82 | 80 | 84 | 86 | 83 | 79 | 72 | 81 | 77   | 77.6 | 2400     |
| VAUGHN              | 44 | 65 | 58 | 53 | 56 | 58 | 56 | 63 | 63 | 59 | 64 | 68 | 63 | 57 | 58 | 62 | 59 | 64 | 60 | 68 | 65 | 63 | 60 | 59 | 61 | 68 | 61 | 60 | 62 | 63   | 60.7 | EDT      |
| SALISBURY           | 73 | 89 | 84 | 68 | 65 | 73 | 79 | 85 | 82 | 84 | 83 | 85 | 84 | 78 | 75 | 73 | 69 | 77 | 81 | 83 | 78 | 81 | 77 | 82 | 83 | 88 | 85 | 83 | 85 | 88   | 80.0 | 2400     |
| NWS WICOMICO CO APT | 51 | 54 | 65 | 58 | 59 | 57 | 56 | 60 | 64 | 63 | 65 | 70 | 66 | 62 | 61 | 59 | 58 | 64 | 64 | 63 | 69 | 65 | 63 | 67 | 64 | 64 | 62 | 63 | 67 | 62   | 62.2 | EDT      |
| WASH NATIONAL       | 74 | 90 | 84 | 66 | 63 | 74 | 80 | 85 | 83 | 81 | 86 | 85 | 82 | 82 | 76 | 68 | 80 | 84 | 89 | 79 | 85 | 85 | 87 | 91 | 89 | 84 | 77 | 86 | 85 | 81.5 | 2400 |          |
| NWS ASOS            | 55 | 63 | 66 | 60 | 61 | 61 | 60 | 66 | 65 | 64 | 69 | 71 | 68 | 68 | 66 | 63 | 62 | 67 | 64 | 72 | 70 | 68 | 67 | 67 | 69 | 72 | 70 | 68 | 66 | 66   | 65.8 | EST      |
| WASH DULLES         | 77 | 91 | 86 | 62 | 64 | 78 | 83 | 89 | 89 | 84 | 82 | 86 | 84 | 81 | 83 | 78 | 68 | 86 | 84 | 89 | 80 | 85 | 86 | 88 | 89 | 91 | 85 | 78 | 87 | 86   | 82.6 | 2400     |
| NWS ASOS            | 48 | 63 | 62 | 58 | 61 | 60 | 60 | 65 | 64 | 61 | 67 | 70 | 68 | 63 | 62 | 64 | 62 | 66 | 61 | 71 | 69 | 67 | 67 | 62 | 63 | 69 | 66 | 63 | 63 | 63   | 63.6 | EST      |
| STERLING 4 N        | 74 | 86 | 83 | 62 | 63 | 75 | 79 | 83 | 82 | 77 | 80 | 79 | 80 | 80 | 81 | 76 | 66 | 80 | 81 | 84 | 78 | 83 | 82 | 83 | 83 | 86 | 85 | 73 | 83 | 81   | 78.9 | 2400     |
| SHAFFER             | 49 | 62 | 66 | 59 | 61 | 60 | 57 | 64 | 65 | 62 | 66 | 70 | 67 | 64 | 62 | 70 | 60 | 64 | 63 | 70 | 69 | 66 | 65 | 65 | 68 | 67 | 65 | 63 | 62 | 63.9 | EDT  |          |
| DAVIS 3 SE WV       | 63 | 72 | 77 | 72 | 56 | 64 | 69 | 76 | 75 | 75 | 73 | 71 | 67 | 71 | 72 | 71 | 71 | 69 | 69 | 77 | 71 | 69 | 71 | 72 | 76 | 76 | 76 | 74 | 72 | 70   | 71.2 | 0700     |
| LESHER              | 39 | 47 | 55 | 55 | 48 | 50 | 50 | 53 | 53 | 58 | 55 | 57 | 55 | 51 | 52 | 55 | 55 | 55 | 58 | 60 | 59 | 55 | 49 | 50 | 53 | 58 | 51 | 51 | 54 | 54   | 53.2 | EDT      |

**ACON MD / DE / DC  
JUNE 2009 DAILY PRECIPITATION**

| STATION                                  | 1 | 2    | 3    | 4    | 5    | 6    | 7    | 8 | 9    | 10   | 11   | 12   | 13   | 14   | 15   | 16   | 17   | 18   | 19   | 20   | 21   | 22   | 23 | 24   | 25 | 26   | 27   | 28   | 29   | 30          | TOTAL       | OBS TIME    |             |
|--|---|------|------|------|------|------|------|---|------|------|------|------|------|------|------|------|------|------|------|------|------|------|----|------|----|------|------|------|------|-------------|-------------|-------------|-------------|
| BEAR 2 SW, DE<br>GALLAHER                |   | 0.12 | 0.74 | 0.28 | 0.68 |      |      |   | 0.28 |      | 0.29 | 0.06 | 0.05 | T    | T    |      | 0.09 | 1.78 |      | 0.70 | T    | 0.01 |    |      |    |      |      | 0.01 |      | 0.08        | 5.17<br>0.0 | 2400<br>EDT |             |
| WILMINGTON , DE<br>NWS NEW CASTLE CO APT |   | 0.53 | 0.81 | 0.41 | 0.70 |      |      |   | 0.02 | T    | 0.28 | 0.02 | 1.21 |      |      |      | 0.10 | 1.81 |      | 0.68 |      | 0.02 |    |      |    |      | T    | T    |      | 0.08        | 6.67<br>0.0 | 2400<br>EST |             |
| NEWARK AG FARM, DE<br>U OF DE DEOS       |   | 0.01 | 0.46 | 0.47 | 0.60 |      |      |   | 0.28 |      | 0.54 |      | 0.86 |      |      |      | 0.11 | 1.59 |      | 0.65 |      |      |    |      |    |      |      |      |      | 0.24        | 5.81        | 2400<br>EDT |             |
| TOWNSEND 4 W, DE<br>U of D REC DEOS      |   |      | 1.26 | 0.48 | 0.70 |      |      |   | 0.48 |      | 0.40 | 0.01 |      |      |      |      | 0.05 | 0.22 | 0.01 | 1.13 |      |      |    |      |    |      |      |      |      | 0.42        | 5.16        | 2400<br>EDT |             |
| GEORGETOWN, DE<br>NWS SUSSEX CO APT      |   | T    | 0.10 | 0.78 | 1.05 |      |      |   | 0.28 | T    | 0.09 | 0.04 | 0.35 | 0.12 | T    |      | T    | 1.48 |      | 0.53 | 0.01 | 0.74 |    | 0.01 |    |      |      | T    |      |             | 5.58<br>-   | 2400<br>EST |             |
| GEORGETOWN, DE<br>U of D REC DEOS        |   |      | 0.10 | 0.72 | 0.88 |      | 0.01 |   | 0.54 |      |      | 0.09 |      | 0.13 |      |      |      | 2.34 | 0.01 | 0.36 |      | 0.21 |    | 0.08 |    |      |      |      |      |             | 5.47        | 2400<br>EDT |             |
| HARBESON 8 S, DE<br>U of D REC DEOS      |   |      | 0.05 | 0.44 | 0.68 |      |      |   | 1.22 |      |      | 0.05 |      | 0.13 |      |      |      | 1.66 |      | 0.25 | 0.01 | 0.20 |    | 0.23 |    |      |      |      |      |             | 4.92        | 2400<br>EDT |             |
| FROSTBURG<br>LATTA                       |   | 0.13 | 0.20 | 0.33 | 1.20 | 0.26 |      |   | 0.01 | T    | 0.51 | 0.39 |      | T    |      |      | 0.17 | 1.91 |      | 0.17 | 0.56 |      |    |      |    |      |      |      |      |             | 5.84<br>0.0 | 0700<br>EDT |             |
| LAVALE<br>MULLINS**                      |   | 0.29 | 0.10 | 1.17 | 0.58 |      |      |   | 0.02 | 0.69 | 0.11 |      | 0.01 |      |      |      | 1.96 | T    |      | 0.73 |      |      |    |      |    | 0.02 |      |      | 0.10 | 5.78<br>0.0 | 2400<br>EDT |             |             |
| PASADENA 2N<br>HANSON                    |   |      | 0.70 | 0.54 | 0.70 |      |      |   | 0.95 | 0.13 | 0.23 | 0.02 | 0.05 | 0.06 |      | 1.05 | 0.08 | 0.82 |      | 0.61 |      |      |    |      |    |      |      |      |      | 0.44        | 6.38<br>0.0 | 2400<br>EDT |             |
| LOTHIAN<br>JUG BAY                       |   |      | 0.17 | >    | 1.12 | >    | 0.63 |   | 0.21 | 0.72 | 0.37 | 0.17 | T    | 0.11 | 0.72 |      |      | 0.28 | 0.63 |      | 0.18 |      |    |      |    | T    | 0.25 |      |      | 5.56<br>0.0 | 0900<br>EDT |             |             |
| BWI<br>NWS ASOS                          |   |      | 1.10 | 0.63 | 0.64 |      |      |   | 0.37 | 0.15 | 0.20 | 0.02 | 0.05 |      |      | T    | 0.16 | 1.77 |      | 0.32 | T    |      |    |      |    |      |      | T    |      | 0.11        | 5.52<br>0.0 | 2400<br>EST |             |
| LAUREL 2 E<br>STOUDT                     |   |      | 1.37 | 0.46 | 0.70 |      |      |   | 0.36 | 0.33 | 0.01 | 0.04 | 0.45 |      |      |      | 0.06 | 1.57 |      | 0.59 |      |      |    |      |    |      |      | T    |      | 0.24        | 6.18<br>0.0 | 2400<br>EST |             |
| OWINGS MILLS 2SE<br>SHARROW              |   |      | 0.08 | 0.35 | 0.91 |      |      |   | 0.31 | 0.79 |      |      | 0.10 | 0.02 |      | 0.20 | 0.23 | 0.98 |      | 0.27 | 0.02 |      |    |      |    |      |      | T    |      | T           | 4.26<br>0.0 | 2400<br>EDT |             |
| BALTIMORE 2SE<br>MANFRE                  |   |      | 1.45 | 0.53 | 0.63 |      |      |   | 0.14 | 0.05 | 0.24 | 0.01 | 0.08 | 0.03 |      | T    | 0.15 | 1.25 |      | 0.35 |      |      |    |      |    |      |      | T    |      | 0.48        | 5.39<br>0.0 | 1800<br>EDT |             |
| BALT INNER HARBOR<br>MD SCIENCE CENTER   |   |      | 1.34 | 0.53 | 0.67 |      |      |   | 0.05 | 0.05 | 0.11 | 0.01 | 0.08 |      |      | 0.03 | 0.14 | 0.96 |      | 0.39 |      |      |    |      |    |      |      |      |      | 0.49        | 4.85<br>-   | 2400<br>EST |             |
| MANCHESTER 1SW<br>CLOSE                  |   |      | 0.32 | 0.44 | 0.68 | 0.05 |      |   | 0.37 | 0.37 | 0.01 | 0.03 | 0.01 |      |      |      | 0.39 | 0.49 |      | 0.62 | 0.04 |      |    |      |    |      |      | T    | 0.02 | 0.10        | 3.94<br>0.0 | 2300<br>EDT |             |
| WESTMINSTER 4 SSE<br>HARTSOCK            |   |      |      | 0.89 | 1.00 |      |      |   | 0.81 | 0.97 | 0.05 | 0.02 | T    | 0.08 |      |      | 0.17 | 0.61 |      | 0.31 |      |      |    |      |    |      |      |      |      | 0.05        | 0.20        | 5.16<br>0.0 | 1900<br>EDT |
| MILLERS 4NE<br>MILLER                    |   |      | T    | 0.66 | 0.78 | 0.04 |      |   | 0.04 | 0.44 | 0.53 | 0.02 |      | 0.19 | T    |      | 0.34 | 0.58 |      | 0.50 | 0.05 |      |    |      |    |      | T    | T    | T    | 0.24        | 4.41<br>0.0 | 1800<br>EDT |             |
| WESTMINSTER CITY<br>MULLER               |   |      | T    | 0.88 | 0.78 | 0.03 |      |   | 0.45 | 2.23 | 0.16 | 0.01 |      |      |      |      | 0.16 | 0.38 |      | 0.59 | 0.02 |      |    |      |    |      |      |      | 0.02 | 0.10        | 5.81<br>0.0 | 1900<br>EST |             |
| WHITE PLAINS 5.5 WNW<br>BRUMBACK ****    |   |      | 0.42 | 0.37 | 0.86 | 0.82 |      |   | 1.27 | 0.41 |      | 0.01 | 0.01 |      |      | 0.81 | 0.13 | 0.62 |      | 0.46 |      | 0.02 | T  |      |    | T    |      | T    |      | 0.03        | 6.24<br>0.0 | 2400<br>EDT |             |
| EMMITSBURG 2 SE<br>GLASS                 |   |      | 0.31 | 0.26 | 0.79 | 0.48 |      |   | 0.50 | 1.66 | 0.06 |      |      | 0.01 |      | T    |      | 1.38 |      | T    | 0.45 | T    |    |      |    |      |      |      | 0.07 |             | 5.97<br>0.0 | 0700<br>EDT |             |

**ACON MD / DE / DC**  
**JUNE 2009 DAILY PRECIPITATION**

| STATION                       | 1 | 2    | 3    | 4    | 5    | 6    | 7 | 8 | 9    | 10   | 11   | 12   | 13   | 14   | 15   | 16   | 17   | 18   | 19 | 20   | 21   | 22   | 23 | 24   | 25 | 26   | 27   | 28   | 29   | 30   | TOTAL | OBS TIME |          |
|-------------------------------|---|------|------|------|------|------|---|---|------|------|------|------|------|------|------|------|------|------|----|------|------|------|----|------|----|------|------|------|------|------|-------|----------|----------|
| EAGLE ROCK HARVEY             |   |      | 0.10 | 0.45 | 1.80 | 0.15 |   |   |      | 0.10 |      |      |      |      |      |      | 0.50 | 2.60 |    | 0.61 | 0.36 |      |    |      |    |      | 0.23 |      |      |      | 6.90  | 0800 EDT |          |
| LAUREL JHU / APL GIANNOLA     |   |      | 1.58 | 0.58 | 0.72 |      |   |   | 0.54 | 0.52 |      |      | 0.46 |      |      |      | 0.07 | 1.78 |    | 0.35 |      |      |    |      |    |      |      |      | 0.04 |      | 6.64  | 2400 EDT |          |
| NORBECK 1 SE BERGER           |   |      | 0.93 | 0.63 | 0.89 | 0.01 |   |   | 0.50 | 0.28 | 0.38 | 0.02 | T    | 0.20 |      |      | 0.08 | 1.88 |    | 0.44 | 0.02 |      |    |      |    | 0.04 |      | T    |      | 0.11 |       | 6.41     | 2200 EDT |
| POTOMAC 4N COHEN              |   |      | 1.40 | 0.40 | 1.00 | 0.03 |   |   | 0.55 | 0.88 | 0.06 | 0.03 |      |      |      |      | 0.11 | 1.88 |    | 0.61 |      |      |    |      |    | 0.28 |      | T    |      | 0.28 |       | 7.51     | 2100 EDT |
| OLNEY 1 S GIANNOLA            |   |      | 0.92 | >    | 1.33 |      |   |   | 0.49 | 0.31 |      | 0.02 | 0.37 |      |      |      | >    | >    | >  | 2.36 | 0.03 |      |    |      |    | 0.11 |      | T    |      | 0.01 |       | 5.95     | 2400 EDT |
| CLARKSBURG 2ENE HOLDEN        |   |      | 1.16 | 0.56 | 0.93 | T    |   |   | 0.38 | 0.22 | 0.01 | 0.01 | 0.28 |      |      |      | 0.22 | 1.30 |    | 0.27 | 0.05 |      |    |      |    | 0.32 |      | T    |      | 0.04 |       | 5.75     | 2400 EST |
| MONTGOMERY VILLAGE ROTH 1SW   |   |      | 0.78 |      | 1.40 | 0.04 |   |   | M    | M    | M    | M    | 0.47 | 0.03 |      | 0.03 | 0.08 | 1.13 |    | 0.62 |      |      |    |      |    |      | 0.06 |      | 0.01 |      | 4.65  | 2400 EDT |          |
| GLENMONT 1NNE ROSSEN          |   |      | 1.40 | 0.53 | 0.73 |      |   | T | 0.40 | 0.54 | T    | 0.02 | 0.01 |      | T    |      | 0.15 | 1.61 |    | 0.66 | 0.01 |      |    |      |    | 0.08 |      |      | 0.12 |      | 6.26  | 2400 EST |          |
| BETHESDA SCAFIDE              |   |      | 1.21 | 0.45 | 1.28 |      |   |   | 0.71 | 0.47 |      | 0.03 |      |      |      |      | 0.09 | 1.27 |    | 0.28 |      |      |    |      |    | 0.19 |      |      | 0.04 |      | 6.02  | 2400 EDT |          |
| GAITHERSBURG 2WNW SHAW        |   |      | 0.70 | 0.46 | 0.96 | T    |   |   | 0.15 | 0.60 | 0.01 | 0.02 | 0.01 |      | 0.07 |      | 0.14 | 0.91 |    | 0.57 | 0.01 |      |    |      |    | 0.05 |      | T    |      | 0.02 |       | 4.68     | 2400 EDT |
| FOREST GLEN TERRY             |   |      | 1.65 | 0.66 | 0.75 |      |   |   | 0.67 | 0.71 | 0.01 | 0.02 | 0.02 |      | T    | 0.14 | 0.10 | 1.38 |    | 0.53 | 0.01 |      |    |      |    | 0.35 |      | T    |      | 0.11 |       | 7.11     | 2400 EDT |
| OXON HILL SMITH               |   |      | 1.39 | 0.11 | 0.97 |      |   |   | 0.92 | 1.05 |      | 0.03 | 0.01 |      |      | 0.05 | 0.07 | 0.96 |    | 0.16 | 0.01 |      |    |      |    | 0.67 |      |      | 0.03 |      |       | 6.43     | 2300 EDT |
| HOLLYWOOD ABELL               |   | 0.27 | 0.59 | 1.00 | 1.09 |      |   |   | 0.50 | 0.01 | 0.25 | 0.04 | 0.01 | 0.01 |      |      | 0.11 | 0.36 |    | 0.24 | 0.01 | T    |    |      |    |      | T    |      |      |      | 4.49  | 2359 EDT |          |
| RIDGE ZYLA                    |   | 0.85 | 0.29 | 0.69 | 0.54 |      |   |   | 0.95 |      | 0.26 | 0.05 |      | 0.05 |      |      | 0.16 | 0.36 |    | 0.70 | 0.04 |      |    |      |    |      |      | T    |      |      |       | 4.94     | 2400 EDT |
| SHARPSBURG HULL               |   |      |      |      |      |      |   |   |      |      |      |      |      |      |      |      |      |      |    |      |      |      |    |      |    |      |      |      |      |      |       |          | 2400 EDT |
| SMITHSBURG 1.5 SW HUTTO       |   |      | 0.71 | 0.60 | 0.99 |      |   |   | 0.80 | 0.39 | 0.80 | 0.02 | 0.04 |      |      |      | 0.96 | 0.36 |    | 0.27 | 0.03 |      |    |      |    | 0.24 | 0.01 | 0.01 | 0.01 |      |       | 6.24     | 2400 EDT |
| HAGERSTOWN 1E KEEFER          |   | 0.10 | 0.63 | 0.49 | 0.92 |      |   |   | 1.25 | 0.66 | 0.88 | 0.01 | 0.01 |      |      |      | 0.93 | 0.57 |    | 0.22 |      |      |    |      |    | 0.74 |      | 0.01 |      |      |       | 7.42     | 2400 EDT |
| SMITHSBURG 2 NE VAUGHN        |   |      | 0.59 | 0.49 | 0.73 |      |   |   | 1.10 | 1.08 | 0.57 |      |      |      |      |      | 0.60 | 0.33 |    | 0.49 |      |      |    |      |    | 0.08 |      |      | 0.18 |      |       | 6.24     | 2400 EDT |
| SALISBURY NWS WICOMICO CO APT |   | 0.01 | 1.08 | 0.73 | 0.17 |      |   |   | 0.74 |      | 0.10 | 0.04 | 1.79 | 0.73 | T    |      | T    | 0.33 |    | 0.27 | T    | 0.22 |    | 0.36 |    |      |      | T    |      |      |       | 6.57     | 2400 EDT |
| WASH NATIONAL NWS ASOS        |   |      | 1.50 | 0.52 | 0.57 | T    |   |   | 0.89 | 0.48 | T    | 0.02 | T    |      |      |      | 0.08 | 1.01 |    | 0.39 | T    |      |    |      |    | 0.38 |      | T    |      | 0.02 |       | 5.86     | 2400 EST |
| WASH DULLES NWS ASOS          |   |      | 2.69 | 0.56 | 0.78 |      |   | T | 0.24 | 1.16 | T    | T    | 0.04 |      |      |      | 0.27 | 0.41 |    | 0.46 |      |      |    |      |    | T    |      | T    |      | 0.08 |       | 6.69     | 2400 EST |
| STERLING 4 N SHAFFER          |   |      | 0.50 | 0.56 | 1.12 | T    |   |   | 0.45 | 1.82 | T    | 0.04 | 0.07 |      |      |      | 0.29 | 1.56 |    | 0.24 | 0.01 |      |    |      |    | 0.01 |      | 0.02 |      | 0.07 |       | 6.76     | 2400 EDT |
| DAVIS 3 SE WV LESHAR          | T |      | 0.07 | 0.36 | 1.68 | 0.38 |   |   | T    | T    | T    | 0.13 | 0.09 |      |      |      | 0.35 | 0.83 | T  | 0.14 | 0.78 |      |    |      |    |      | 0.10 |      | T    | 0.04 |       | 4.95     | 0700 EDT |