



<http://www.jhuapl.edu/weather/education/ACONdata.html>

ATLANTIC COAST OBSERVER NETWORK, MD / DE / DC CHAPTER WITH DATA FROM NEARBY AREAS

STRONG MOTHER'S DAY NORTHEASTER

Temperatures this month averaged below normal while precipitation was above normal. Two heavy rain events accounted for a large percentage of the month's precipitation. The warmest temperatures occurred early and late in the month. Almost all of the rain fell during the second and third week and on the last day of the month. The only snowfall observed fell as a trace in the Maryland Mountains.

The month dawned on a cold note. Nearly all stations reported their coldest readings on the 1st. Temperatures quickly rebounded and by the 2nd they generally ranged from the upper 70's to lower 80's.

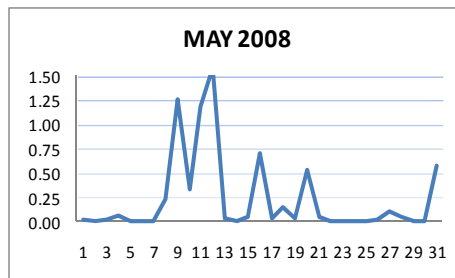
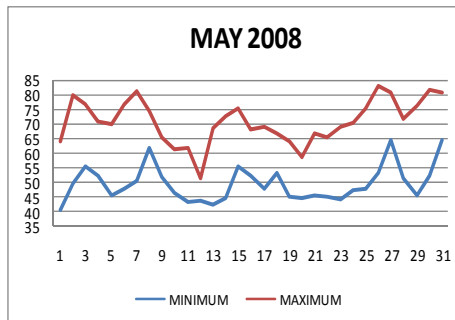
Two heavy rain events occurred from the 8th to the 12th. The first event occurred from 8th to the 10th. The heaviest rains fell the morning of the 9th. Amounts were generally in the one to two inch range. The heaviest amounts fell east of Washington DC. **Brian Smith of Oxon Hill** reported 4.42", **Marty Brumback of Bryans Road 2 ESE** reported 4.14", and **Dan Hanson of Pasadena 2N** 3.25".

A strong late season Northeaster brought strong winds, heavy rains, and unseasonal cold temperatures the afternoon of the 11th, Mother's Day, and the 12th. A boat performing wind research for a proposed off shore wind farm sunk off the Delaware Coast. One person lost his life. Storm totals ranged from less than an inch in Northern Delaware to over seven inches east of Washington DC. The heaviest rains fell in the same general area as the last event. The following amounts were reported by ACON observers: **Jug Bay Wetlands of Lothian** 7.25", **Brian Smith of Oxon Hill** and **Marty Brumback of Bryans Road 2 ESE** both 4.77", **Jim Vaughn of Smithsburg 2 NE** 4.59" and **Lance Schafer of Sterling 4N** 4.26". Maximum temperatures on the 12th failed to rise much above 50. Some observers reported their lowest maximum

temperature ever for the month of May.

Several low pressure systems brought rain to the region from the 16th to the 21st. Amounts on the 16th and 20th were generally in the half to three quarters of an inch range while lighter amounts fell on the other days.

Fair weather occurred from the 22nd to the 26th. Minimum temperatures were in the 40's while maximum temperatures rose from the 60's on the 22nd and 23rd to the 80's on the 26th (Memorial Day) and the 27th. Scattered showers occurred on the 27th and 28th. Warm temperatures returned on the 30th and 31st. Thunderstorms on the 31st brought an average of a half inch of rain. The heaviest amounts fell between the Chesapeake Bay and I-95. **Brian Smith of Oxon Hill** reported 1.87" bringing his month's



ACON MD/DE Network

Daily average temperatures and precipitation based on observation times, not calendar days.

EXTREMES REPORTED BY

ACON OBSERVERS

MAXIMUM TEMPERATURE

Bryans Road 2 ESE	90
Glenmont 1 NNE	88
Oxon Hill	88
Hollywood	88

MINIMUM TEMPERATURE

Davis 3 SE WV	31
Eagle Rock	34
Frostburg	35
Emmitsburg	35

WARMEST AVG. TEMP.

Ridge	64.2
Baltimore 2 SE	64.0

COLDEST AVG. TEMP.

Davis 3 SE WV	50.8
Frostburg	53.1
Eagle Rock	55.1

MAXIMUM PRECIPITATION

Oxon Hill	12.78
Bryans Road 2 ESE	11.75
Jug Bay Wetlands	11.23

MINIMUM PRECIPITATION

Harbeson 8 S DE	5.30
Emmitsburg	5.43

MAXIMUM SNOWFALL

Davis 3 SE WV	0.5
Eagle Rock	T

precipitation to over 12 inches. Other ACON stations reporting over 10 inches of rain this month were **Jug Bay Wetland of Lothian**, and **Marty Brumback of Bryans Road 2 ESE**.

Longtime ACON observer **AI Kreinik of Parkton 5 SW** passed away on the 28th. See pages 3 & 4 for a memorial.

OBSERVER COMMENTS FOR MAY 2008

Gary Gallaher Bear 2 of SW, DE

9th - 2.50" New May monthly daily rainfall record. Old daily record was 2.49" set 5/1/1976.

12th - Peak wind gust 54 MPH from the ENE

18th - 29.31" New May monthly minimum barometric pressure. Old was 29.32" set 5/31/2003

Nate Mullins of LaVale

Average maximum temperature of 66.8 is the coolest for any May.

10th - Daily record rainfall of 1.25".

12th - 47° high—record minimum maximum temperature for May. Old was 48 set 5/2/2005. Some light late season snowflakes in the nearby mountains.

31st - Series of strong thunderstorms, mainly in the morning, brings the daily total to a record 1.02"

Jeff Stoudt of Laurel 2 E

9th - +TSRA till 0100, then RA till near dusk.

21st - Partial double rainbow ~1845..

Marty Sharrow of Owings Mills

19th - Variable clouds, windy, and quite cool.

26th - Sunny, breezy, much warmer.

31st - Cloudy with light morning and early PM thunderstorms.

Joe Manfre of Baltimore 2SE

22nd - Partly cloudy, mild, very windy in the afternoon and evening.

26th - Cloudy, warm, a few light showers.

Eric Glass of Emmitsburg

5th - Clear, sunny, calm.

Ralph Hartsock of Westminster 4 SSE

1st - Frosty start, light showers.

9th - Thunderstorms, a soaker rain, cold.

27th - Evening heavy thunderstorm

Bobby Miller of Millers 4 NE

3rd - AM fog, PM haze, little sun, PM max 69.

12th - Moderate - heavy rain in AM windy. PM max 46.

19th - Rainbow SW

Ray Muller of Westminster City

4th - Dense fog, visibility 1/4 mile.

Rebecca Harvey of Eagle Rock

12th - Mixed snow and rain.

Rich Giannola of JHU/APL

12th - Minimum barometric pressure 29.36".

Rob Cohen of Potomac 4 N

13th - 42 tied daily minimum temperature.

31st - Occasional thunder noon to 2 PM.

Rich Giannola of Olney 1 S

11-12th - -RASH began in afternoon. Steady RA continued through 12th, totaling 2.92" by 8:00PM. Additional .02 more fell during the evening.

Rich Giannola of Olney 1 S (Cont.)

21st - SHRA with gusty winds 5:50 - 6:15 PM, gustiest 5:55 - 6:00 PM.

Stan Rossen of Glenmont 1 NNE

12th - Maximum temperature of 49 lowest in 31 Mays of record. Old minimum maximum temperature 50 set 5/4/1994.

Kevin Shaw of Gaithersburg 2 WNW

73% of May's rain, 4.88", fell from the 8th to the 12th. This was the 3rd wettest May. Record is 10.05" set in 1988.

11th - Daily precipitation record of 2.32" set.

12th - Minimum maximum temperature set for May of 49°.

13th - Minimum barometric pressure 29.35" at 3:30 AM.

Joe Terry of Forest Glen

Wettest May in station history (13 years) and the second wettest month in a row.

12th - 50° tied with May 2003 for the months minimum maximum temperature. Months minimum barometric pressure of 29.31".

Brian Smith of Oxon Hill

9th - TSRA started around 2300 5/8. +TSRA 0000-0300, RA to +RA 0300-0800.

11th - -RA 1400-1600, then +RA 1600-2400. +TSRA 2130-2150.

28th - Halo 0946

31st - +TSRA 1400 to 1600.

Floyd Abell of Hollywood

11th - Afternoon and evening heavy rain, some thunder.

John Zyla of Ridge

7th - Thick AM fog in yard.

31st - Fog, hail pea sized, thunderstorm at 8:05 PM.

Max Hutto of Smithsburg 1.5 SW

19th - Cloudy, cooler, very windy.

26th - Very warm, PM showers, breezy.

Greg Keefer of Hagerstown 1 E

13th - Dense overnight and early morning fog.

18th - Windy afternoon and evening. Minimum barometric pressure 29.28".

27th - Warm and humid. Some evening sprinkles with thunder.

Jim Vaughn of Smithsburg 2 NE

11th - New daily rainfall (1.52") and minimum maximum temperature (60°).

12th - Maximum temperature of 49 set a monthly minimum maximum temperature. Old min max was 51 set on several occasions, the last being 5/17/2003.

Compiled by Gary Gallaher, MD/DE ACON Data Collector and Report Writer, from data received from dedicated observers. Without your observations each month this report will not be possible.

Long time ACON member and weather good friend **Al Kreinik** of **Parkton 5 SW Maryland** passed away on May 28. Al was an avid weather observer and train enthusiast. Bobby Miller and Al were the best of friends. They travelled thousands of miles across the beautiful USA visiting numerous weather and railroad sites. Below is memorial written by Bobby Miller and some pictures that I took over the years at our gatherings.

Al, you will be missed,
Gary Gallaher
ACON Data Manager
and Report Writer

In Memory of Allen Kreinik: July 11, 1930- May 28, 2008

By Bobby Miller, NWS Cooperative Weather Observer and charter member of ACON

2008 was a very difficult year for all of us and for me personally as I lost my best friend and assistant observer, Al Kreinik. Al joined our Maryland and Delaware ACON group in 1988 right before our annual meeting in State College, Pennsylvania. I had met him on May 26, 1988 working at AAI Corporation on the beginning or pre production phase of ASOS. Al was very involved with the configuration management side. He called about 3 P.M that day and found him to be very interesting and full of conversation of all kinds of topics. Weather was one he was particularly fond of as he passed a correspondence course in meteorology in February 1951! His interest in weather went back at least that far! Al said he heard of somebody who works at AAI that attends weather meetings and he wanted to know more! Needless to say we and ACON had a wonderful 20 year relationship! Kevin and I will always remember the head end of his cot falling while he was talking in our room at the first meeting. We all got a great laugh out of that one and many more for two decades.

Al enjoyed the first meeting at State College and came with me (naturally!) to many other meetings and our annual parties at Robert Rickell's or Herb Close's house. He was a fixture at these gatherings, mainly due to his easy outgoing style in conversation and his knowledge of electronics. If Al couldn't fix it he would get on the telephone and find out how to fix it. That's how he did a lot of things!

On Labor Day 1988, Al paid a visit to the station at Millers 4 NE, Maryland and took notes and asked many questions on setting up a home weather station. Another item Al was excellent in doing- asking questions!

By 1989, Al had built a Heathkit 5001 weather station. I helped him install a shelter and a rain gage and he was on his way to a fine two decade record of observations at his home 5 miles southwest of the post office in Parkton, Maryland.

(Continued on page 4)



2002 Al Kreinik



1993 Al with Bobby Miller & Wayne Winston



2001 Al with Kevin Shaw

(Continued from Page 3)

During Al's initial visit I also found out that he liked trains both real and model! From 1989 until his untimely death he helped in building our model railroad layout. He also introduced me to a friend of his named Joe Albert who designed our layout and helped lay our track work beginning in 1993.

It would be impossible to list every story or highlight but I would be amiss if I didn't mention the fact that he had a lot of respect for all of our Maryland and Delaware ACON weather observers. That he told me on more than one occasion! He was extremely proud of our group and the fact that we have remained dedicated and faithful observers for such a long time.

Al was a very busy individual and remained so up to the very end. In May of this year we acquired a large part of the weather equipment of Lowell Koontz who was moving from Annandale, Virginia to northwest of Richmond, Virginia. Al and I called it the Nimbus project and we planned on working the entire summer on it.

But God had other perfect plans. Al had been suffering from diabetes for a quarter of a century or so. It forced him to live with us everyday for 5 years and 5 months. No problems here as he was part of our family! After a 911 calls and trip to the hospital on Friday May 23, 2008, he slipped into a diabetic coma and never recovered. His suffering from this terrible disease had come to an end. He always told me he would like to live to be a 100 and I believe he could have since a long life ran in his family. But he also said, "I would like to know my up from my down!" He was too active to live any other way and I am sure God called him to avoid this situation for all of us.

Al told me after his December 2002 heart bypass operation and his pacemaker procedures that everything will work out fine! If anything would happen to me you will be taken care of. He also told me never to stop observing and enjoying the train layout. I completed the Nimbus weather station on November 13, 2008 in memory of Al Kreinik. I felt like he was watching me overcome my electronics inexperience on many occasions.

I cannot image my life without knowing Al for 20 years and 2 days. I am sure many other observers feel the same way. I also would like to thank everyone for all of their cards, emails, phone calls and flowers during this difficult time. It also reminds me of all of the Maryland and Delaware observers who have gone on before like Joe Moyer, Kenney Boggs and Dave Bryant, just to name a few, who have left an excellent weather observing legacy. Take a look at the official Maryland Delaware Climatological Data publications for those individuals who have observed many decades in decades past! I also want to encourage everybody who remains to live a life and leave a legacy like Al would want us to do-keep observing. There are many more or hopefully many more blizzards and thunderstorms to observe and document! And as Al would say "How 'bout that!"



2003 Al with Bobby Miller & Jeff Stoudt



2005 Al with Jeff Stoudt



2006 Al with Marty Brumback & Bobby Miller



2007 Al with Herb Close, Bobby Miller

ACON MD/DE/DC
MAY 2008 SUMMARY

OBSERVER	STATION <i>COUNTY, STATE</i>	TEMPERATURE									PEAK WIND			PRECIPITATION					SNOWFALL				OBS TIME		
		AVG MAX	AVG MIN	MEAN	MAX	DAY	MIN	DAY	MAX >=90	MAX <=32	MIN <=32	GUST	DIR	DAY	TOTAL	MAX DAY	DATE	YEAR	DAYS >=.01"	DAYS >=1"	TOTAL	MAX DAY		DATE	SEA- SON
<i>New Castle, Delaware</i>																									
Gallagher, Gary	Bear 2 SW	70.5	47.7	59.1	83	27	38	1	0	0	0	54	ENE	12	5.68	2.50	9	17.12	13	1	0.0	0.0	9.2	2400	
NWS Wilmington	New Castle Co. Apt.	71.0	49.3	60.2	84	27	41	13	0	0	0	48	NE	12	5.12	1.94	9	16.98	12	1	0.0	0.0	9.2	2400	
U of DE DEOS***	UofD AG Farm Newark, DE	70.8	48.7	59.8	85	27+	41	1+	0	0	0	31		12	5.57	2.18	9	17.95	11	1				2400	
U of D REC DEOS***	Townsend 4 W	69.9	48.1	59.0	83	27	39	11	0	0	0	34		12	7.40	2.64	9	17.84	11	2				2400	
<i>Sussex, Delaware</i>																									
NWS Georgetown	Sussex Co. Airport	72.8	50.5	61.7	88	31	42	1+	0	0	0	51	ESE	11	6.12	2.62	12	16.16	11	2				2400	
U of D REC DEOS***	Georgetown	72.7	50.4	61.6	88	31	42	1+	0	0	0	28		12	5.72	1.78	12	15.18	9	3			4.7	2400	
U of D REC DEOS***	Harbeson 8 S	70.5	49.3	59.9	87	31	41	1+	0	0	0	47		12	5.30	2.57	12	14.63	11	1			1.0	2400	
<i>Allegany, Maryland</i>																									
Latta, Greg	Frostburg	65.2	42.4	53.8	84	27	35	1	0	0	0				6.95	1.27	4	21.67	19	3	0.0	0.0	41.4	0700	
Mullins, Nate**	LaVale	66.8	47.9	57.4	81	26+	40	1+	0	0	0				6.76	1.53	11	20.70	17	3	0.0	0.0	22.0	2400	
<i>Anne Arundel, Maryland</i>																									
Hanson, Dan	Pasadena 2 N	73.8	49.9	61.9	87	26+	39	1	0	0	0	40	NE	12	7.10	3.00	9	17.03	11	2	0.0	0.0	7.5	2400	
Jug Bay Wetlands	Lothian	74.3	49.7	62.0	86	3	37	1	0	0	0				11.23	6.59	12	25.99	10	3	0.0	0.0	2.2	0900	
NWS Baltimore	BWI Airport	72.0	49.0	60.5	85	26	38	1	0	0	0	41	NW	21	7.77	2.20	12	20.03	11	3	0.0	0.0	8.5	2400	
Stoudt, Jeff	Laurel 2 E	71.7	51.3	61.5	85	25	40	1	0	0	0				8.68	2.01	11	21.69	11	3	0.0	0.0	7.2	2400	
<i>Baltimore, Maryland</i>																									
Sharrow, Marty	Owings Mills 2 SE	71.1	48.7	59.9	85	26	36	1	0	0	0				6.11	1.84	12	16.89	11	3	0.0	0.0	11.1	2400	
<i>Baltimore City, Maryland</i>																									
Manfre, Joe	Baltimore 2 SE	73.0	54.9	64.0	87	26	47	1+	0	0	0				5.64	1.61	9	17.15	11	2	0.0	0.0	7.6	1800	
Maryland Science Ctr	Baltimore Inner Harbor	72.7	54.8	63.8	87	26	47	1+	0	0	0				5.36	1.67	9	16.64	10	1				2400	
<i>Carroll, Maryland</i>																									
Close Jr, Herb	Manchester 1 SW	68.4	49.5	59.0	83	26	40	12	0	0	0				6.17	1.84	12	19.69	15	1	0.0	0.0	18.4	2300	
Hartsock, Ralph	Westminster 4 SSE	70.9	46.9	58.9	84	26	36	1	0	0	0	41		22	6.37	2.17	12	22.25	14	1	0.0	0.0	13.1	1900	
Klein, Greg	Westminster 5 SSE	67.2	48.2	57.7	80	27	38	12	0	0	0				6.80	2.04	12	21.74	12	1	0.0	0.0	17.5	2200	
Miller, Bobby	Millers 4 NE	69.6	47.2	58.4	82	26	38	1	0	0	0	42	W	21	6.38	2.12	12	23.72	14	1	0.0	0.0	18.0	1800	
Muller, Ray	Westminster City	70.9	48.9	59.9	85	26	38	13	0	0	0	43	NNW	22	6.87	2.22	12	21.48	16	1	0.0	0.0	15.3	1900	
<i>Charles, Maryland</i>																									
Brumback, Marty	Bryans Road 2 ESE	74.6	51.2	62.9	90	31	42	1	1	0	0	40		12	11.75	3.33	9	25.08	14	4	0.0	0.0	5.9	2400	
<i>Frederick, Maryland</i>																									
Glass, Eric	Emmitsburg 2 SE	68.3	45.0	56.7	82	27	35	1	0	0	0				5.43	2.23	12	18.51	12	1	0.0	0.0	11.0	0630	
Lawrence, Bryon	Frederick 3 WNW	STATION CLOSED MAY 2008																			14.02			11.5	2300
<i>Garrett, Maryland</i>																									
Harvey, Rebecca	Eagle Rock	66.2	44.0	55.1	82	27+	34	1+	0	0	0				8.08	1.40	16	27.61	14	3	T	T	12	118.3	0800

**ACON MD / DE / DC
MAY 2008 DAILY TEMPERATURES**

STATION	1	2	3	4	5	6	7	8	9	10	11	12	13	14	15	16	17	18	19	20	21	22	23	24	25	26	27	28	29	30	31	AVG	OBS TIME
BEAR 2 SW, DE GALLAHER	63 38	77 46	70 52	71 52	68 47	77 42	80 46	75 63	63 52	63 44	63 39	51 47	73 44	74 39	77 54	65 53	73 46	69 52	61 42	55 40	67 46	65 45	69 42	72 46	76 44	82 48	83 63	69 53	76 41	82 49	78 64	70.5 47.7	2400 EDT
WILMINGTON , DE NWS NEW CASTLE CO APT	62 44	76 47	68 52	71 52	67 50	79 47	81 50	75 64	65 46	63 42	64 46	51 46	74 46	75 41	77 56	64 53	73 46	68 51	62 44	55 43	68 47	65 48	70 44	74 48	78 48	82 52	84 59	70 52	77 45	82 54	80 65	71.0 49.3	2400 EST
NEWARK AG FARM, DE U OF DE DEOS	64 41	77 45	69 51	71 51	71 52	78 46	83 48	75 63	63 51	62 45	64 41	50 46	73 46	76 41	77 54	66 52	74 44	70 51	61 44	54 41	69 47	64 47	68 43	72 49	77 49	83 51	85 62	69 51	78 44	85 53	69 61	70.8 48.7	2400 EDT
TOWNSEND 4 W, DE U of D REC DEOS	64 40	78 45	69 51	70 51	67 46	76 42	80 47	76 61	63 51	63 44	60 39	50 46	70 43	74 40	75 56	M 52	68 46	62 53	54 43	67 42	65 47	68 45	71 45	74 45	81 52	83 66	67 51	76 43	82 50	80 65	69.9 48.1	2400 EDT	
GEORGETOWN, DE NWS SUSSEX CO APT	67 42	80 55	72 53	73 50	67 46	77 46	83 53	74 64	71 52	62 49	66 42	56 46	69 44	75 45	77 57	73 56	73 50	66 53	65 47	67 43	68 45	69 48	74 52	83 50	83 76	70 61	77 49	84 53	88 65	72.8 50.5	2400 EST		
GEORGETOWN, DE U of D REC DEOS	66 43	80 58	79 52	74 53	67 46	77 45	82 51	77 65	71 51	61 49	66 43	57 46	69 42	74 45	76 57	72 54	72 49	72 54	65 47	64 46	66 48	67 44	69 44	72 51	76 46	82 53	83 67	73 49	76 43	84 53	88 64	72.7 50.4	2400 EDT
HARBESON 8 S, DE U of D REC DEOS	65 41	79 56	66 52	69 52	62 44	74 44	81 50	73 65	70 51	61 47	62 42	54 46	64 46	75 41	75 55	M 49	M 56	64 45	63 43	65 45	66 43	67 49	70 47	72 49	82 51	82 66	72 46	75 42	82 51	87 64	70.5 49.3	2400 EDT	
FROSTBURG LATTA	54 35	66 42	79 44	76 46	61 37	70 38	71 46	78 50	64 53	57 46	59 40	53 36	46 36	67 41	65 47	69 47	50 42	67 43	60 40	56 40	52 42	56 40	59 38	65 41	65 40	74 42	83 48	76 44	68 41	75 40	80 49	65.2 42.4	0700 EDT
LAVALE MULLINS**	64 40	80 45	76 58	62 50	70 41	70 47	79 47	69 60	63 53	62 50	54 44	47 41	62 48	66 44	69 57	55 46	70 47	66 47	57 44	52 45	56 41	59 46	65 40	68 47	81 45	78 46	68 64	74 50	76 44	81 58	73.8 47.9	2400 EDT	
PASADENA 2 N HANSON	65 39	81 48	77 56	74 55	70 46	81 49	84 49	74 63	65 53	67 47	65 42	52 47	75 44	76 47	80 55	71 44	77 54	67 45	57 44	67 45	57 41	69 45	74 52	77 49	78 53	87 69	72 48	81 43	82 52	85 66	73.8 49.9	2400 EDT	
LOTHIAN JUG BAY	65 37	71 48	86 56	84 59	77 43	71 48	84 50	85 66	73 64	M M	66 43	63 47	56 40	73 43	76 55	81 62	76 44	77 52	67 44	70 44	62 44	70 43	M 43	M 43	78 46	78 51	M 57	85 43	71 53	80 66	84 66	74.3 49.7	0900 EDT
BALTIMORE NWS BWI APT	64 38	83 47	77 57	71 50	69 46	79 46	82 50	74 63	64 49	65 46	63 42	50 46	72 43	73 44	76 56	68 52	74 45	68 52	65 44	57 45	68 45	67 43	70 48	74 53	85 68	83 49	70 45	79 51	83 64	82 51	72.0 49.0	2400 EST	
LAUREL 2 E STOUDT	66 40	83 50	78 58	72 53	70 47	78 55	83 53	73 52	64 50	63 45	62 45	49 44	71 46	73 46	76 59	67 52	74 48	67 55	65 48	56 47	68 48	66 47	70 51	73 50	77 55	85 70	83 55	70 49	79 54	83 65	80 51	71.7 51.3	2400 EST
OWINGS MILLS 2SE SHARROW	62 36	82 47	71 54	69 52	70 46	77 48	82 50	77 63	63 50	63 46	51 41	71 41	75 41	77 44	65 53	74 47	66 44	61 51	52 45	68 42	66 43	73 49	72 59	77 50	85 52	83 66	73 51	78 45	84 61	73 61	71.1 48.7	2400 EDT	
BALTIMORE 2SE MANFRE	65 47	79 54	75 57	72 56	69 55	80 54	84 59	77 65	66 54	64 51	51 50	73 47	76 52	79 61	69 54	66 49	56 57	66 50	56 51	68 52	71 49	68 52	72 57	75 58	78 87	86 71	70 57	80 55	83 60	80 66	73.0 54.9	1800 EDT	
BALT INNER HARBOR MD SCIENCE CENTER	64 47	78 54	72 57	72 56	69 55	80 54	84 59	77 65	66 54	64 51	51 50	73 47	76 52	79 61	67 54	77 49	69 57	66 50	57 50	70 50	68 50	72 49	74 57	78 58	87 58	86 67	70 57	80 55	83 60	80 67	72.7 54.8	2400 EST	
MANCHESTER 1SW CLOSE	60 41	80 49	68 52	66 51	69 48	76 52	78 56	71 61	61 49	61 45	47 46	69 40	71 48	74 55	64 48	71 52	66 43	58 45	52 44	65 45	61 42	68 47	71 50	74 53	83 63	81 51	65 52	75 58	80 63	73 58	68.4 49.5	2300 EDT	
WESTMINSTER 4 SSE HARTSOCK	63 36	82 44	77 54	73 54	71 45	80 47	83 50	79 60	67 50	67 44	48 39	67 39	73 39	74 43	72 52	73 42	71 50	59 42	59 40	62 42	64 43	70 41	71 44	84 40	83 52	64 66	72 52	83 42	72 48	82 60	76 46	70.9 46.9	1900 EDT
WESTMINSTER 5 SSE KLEIN	59 39	77 47	67 53	66 52	68 46	77 50	76 53	74 61	61 49	59 44	60 44	49 38	66 41	70 46	63 53	70 47	64 44	58 43	52 43	63 44	60 43	66 43	68 47	71 48	78 51	80 65	65 50	72 48	77 52	74 61	67.2 48.2	2200 EDT	
MILLERS 4NE MILLER	61 38	79 44	76 52	66 52	68 48	74 48	78 51	75 64	61 49	62 43	52 40	69 40	71 44	72 44	71 51	68 41	65 49	57 42	63 40	61 44	66 44	70 47	73 45	82 53	80 66	70 50	80 53	74 42	80 48	77 62	69.6 47.2	1800 EDT	
WESTMINSTER CITY MULLER	61 40	82 48	72 55	69 54	70 43	77 47	81 49	74 62	64 51	65 47	63 48	50 41	70 38	71 45	76 56	73 51	71 44	68 53	64 42	59 44	66 42	67 47	71 41	70 46	73 46	85 55	84 68	70 54	76 44	80 51	76 65	70.9 48.9	1900 EDT
BRYANS ROAD 2 ESE BRUMBACK	73 42	85 60	84 59	75 55	75 49	79 49	84 63	73 52	67 50	67 44	51 46	51 46	74 45	75 45	78 55	75 55	78 62	62 46	70 48	64 45	72 47	70 45	72 47	75 51	79 49	86 58	83 52	72 40	80 54	85 68	74.6 51.2	2400 EDT	
EMMITSBURG 2 SE GLASS	57 35	61 37	82 43	69 53	68 43	69 43	75 44	79 47	73 58	63 45	61 40	49 41	70 38	71 40	75 45	57 53	73 44	68 50	61 45	55 42	65 41	63 44	68 41	72 47	73 50	82 53	81 54	66 42	75 44	79 49	68.3 45.0	0630 EDT	

**ACON MD / DE / DC
MAY 2008 DAILY TEMPERATURES**

STATION	1	2	3	4	5	6	7	8	9	10	11	12	13	14	15	16	17	18	19	20	21	22	23	24	25	26	27	28	29	30	31	AVG	OBS TIME	
FREDERICK 3 WNW LAWRENCE																																		2300 EDT
EAGLE ROCK HARVEY	50 34	72 52	70 50	80 42	60 38	68 38	70 50	75 52	62 44	59 44	60 42	59 40	48 34	68 42	64 42	66 46	50 40	60 38	68 42	56 40	78 52	56 40	60 38	64 34	70 40	72 50	82 62	82 42	69 42	74 52	80 62	66.2 44.0	0800 EDT	
LAUREL JHU / APL GIANNOLA	65 39	84 50	78 56	68 54	71 48	77 50	81 55	74 62	63 51	63 48	60 43	48 43	70 45	74 46	77 57	66 51	74 47	68 55	62 47	56 45	68 48	64 48	68 46	71 51	77 50	84 58	82 68	69 52	78 45	83 52	81 64	71.1 50.8	2400 EDT	
POTOMAC 4N COHEN	64 40	84 47	82 58	63 57	72 44	77 48	83 49	73 64	65 53	59 47	58 42	51 43	65 42	72 44	76 55	68 54	74 47	68 52	65 47	57 46	67 44	65 44	70 46	73 48	76 49	85 53	81 68	72 56	77 45	82 53	79 68	71.1 50.1	2100 EDT	
OLNEY 1 S GIANNOLA	65 50	82 51	77 57	70 57	71 47	75 51	81 52	74 63	62 52	62 48	59 45	50 42	70 41	70 47	74 56	65 52	68 46	64 53	56 45	67 48	64 45	69 49	71 48	75 48	83 57	80 68	72 55	78 47	81 54	77 67	70.5 51.0	2400 EDT		
CLARKSBURG 2ENE HOLDEN	63 43	81 51	78 56	67 49	70 46	75 52	80 55	71 61	61 48	62 46	61 47	48 41	69 42	71 52	75 57	62 48	73 45	67 52	61 44	56 46	67 45	64 46	68 44	71 48	74 47	83 54	80 64	67 52	76 49	81 56	77 67	69.6 50.1	2400 EST	
MONTGOMERY VILLAGE ROTH 1SW	65 41	83 49	82 59	73 53	72 47	78 50	83 51	75 66	66 53	64 50	62 45	50 44	71 42	74 46	78 58	67 54	69 47	65 54	57 48	68 46	66 47	70 45	73 50	77 58	87 58	83 70	74 54	78 48	85 55	81 70	72.5 51.5	2400 EDT		
GLENMONT 1NNE ROSSEN	67 39	86 48	82 57	72 50	74 44	80 47	86 49	74 62	64 50	63 47	62 42	49 43	71 41	74 44	77 56	65 52	77 47	68 53	57 46	69 45	66 46	66 44	72 44	73 48	79 47	88 53	83 69	70 49	81 45	85 52	80 66	72.9 49.2	2400 EST	
BETHESDA SCAFIDE	65 42	81 51	79 58	71 57	70 48	75 51	79 52	73 62	64 51	63 48	60 45	50 44	70 43	73 48	75 54	65 48	73 54	66 47	64 48	58 46	66 45	65 48	68 49	72 51	74 55	82 68	80 54	73 47	76 55	79 67	80 70	70.6 51.4	2400 EDT	
GAITHERSBURG 2WNW SHAW	64 39	81 47	80 58	72 51	74 44	79 49	83 49	73 63	64 50	63 49	63 43	49 42	69 45	69 56	73 51	64 46	73 52	68 45	64 45	58 45	66 45	64 45	69 44	72 47	79 48	86 54	81 68	73 48	83 51	85 45	85 68	78 49.5	2400 EDT	
FOREST GLEN TERRY	69 41	85 50	84 57	74 52	74 46	81 50	84 50	74 63	66 50	66 47	61 43	50 44	74 42	75 45	79 56	67 53	76 45	69 45	68 46	60 44	70 43	69 44	73 47	77 47	80 48	87 57	84 69	73 51	81 45	85 53	82 68	74.1 49.9	2400 EDT	
OXON HILL SMITH	71 42	86 58	84 59	74 58	76 48	80 52	85 65	71 67	66 54	63 51	63 46	52 46	74 46	74 47	79 53	73 57	78 48	69 55	69 49	62 51	71 49	70 51	72 52	75 51	79 54	87 68	84 54	75 48	79 55	86 65	88 52.7	2300 EDT		
HOLLYWOOD ABELL	71 42	82 60	81 64	76 52	72 49	78 52	83 52	73 65	71 52	64 49	63 44	56 47	74 45	78 47	77 57	68 54	69 46	67 53	69 46	70 46	70 46	71 47	74 54	76 53	84 57	83 68	72 47	76 48	83 54	78 67	88 74.1	2359 EDT		
RIDGE ZYLA	69 53	82 60	83 62	73 58	70 56	81 53	82 59	71 64	62 52	62 49	53 46	67 46	74 53	78 61	78 52	76 49	72 51	66 49	69 49	62 50	71 49	70 49	73 52	72 56	75 58	84 63	84 56	66 53	74 53	79 59	89 67	73.8 54.5	2400 EDT	
SMITHSBURG 1.5 SW HUTTO	66 36	82 44	75 55	67 45	73 37	77 41	82 44	74 60	61 52	67 46	62 40	49 41	75 38	73 42	76 57	62 48	72 40	69 48	61 42	58 40	65 42	63 42	71 38	73 41	77 42	86 51	84 67	71 48	80 40	83 47	78 66	71.4 45.7	2400 EDT	
HAGERSTOWN 1E KEEFER	63 37	82 45	75 56	66 54	70 39	76 43	81 46	75 61	62 53	64 49	60 42	49 41	71 39	72 44	76 58	62 49	73 41	69 48	61 44	57 42	66 42	64 43	70 41	74 44	75 44	85 55	83 67	70 50	78 43	81 49	78 66	70.6 47.6	2400 EDT	
SMITHSBURG 2 NE VAUGHN	62 43	79 48	73 57	64 50	70 48	74 50	78 61	73 50	63 47	63 44	60 47	49 44	71 40	70 41	74 58	66 49	71 43	67 49	59 44	55 43	63 47	61 47	68 42	72 45	73 47	82 58	80 67	67 50	76 45	79 51	75 65	68.9 48.9	2400 EDT	
SALISBURY NWS WICOMICO CO APT	67 40	79 57	81 56	74 45	67 41	76 40	82 46	71 61	74 51	62 44	66 38	56 46	68 42	74 38	77 57	72 55	74 49	67 51	70 42	65 43	69 40	70 40	73 45	75 42	81 44	83 67	72 41	74 37	82 44	87 63	73.0 46.7	2400 EDT		
WASH NATIONAL NWS ASOS	71 48	81 55	83 60	73 59	73 52	79 55	82 56	75 63	66 52	67 50	63 48	52 48	74 48	75 51	80 55	74 51	77 57	70 53	63 52	72 51	70 52	63 54	72 56	75 59	78 69	85 69	83 57	73 53	77 59	82 69	87 55.1	2400 EST		
WASH DULLES NWS ASOS	67 39	83 47	82 61	71 49	73 44	77 49	82 49	72 62	63 54	64 49	58 44	50 44	71 41	73 44	76 55	66 52	75 47	66 52	61 46	69 45	69 45	70 43	71 45	74 52	85 49	81 69	73 49	84 43	83 53	85 67	72.6 49.6	2400 EST		
STERLING 4 N SHAFFER	66 41	82 47	81 60	69 56	70 47	72 49	81 50	72 65	63 55	63 50	58 46	50 42	68 44	71 45	73 56	65 54	74 47	68 53	66 49	58 47	66 46	66 46	69 46	72 50	74 50	82 52	80 68	80 58	76 48	81 52	79 69	70.9 51.2	2400 EDT	
DAVIS 3 SE WV LESHER	45 31	67 43	76 55	70 38	57 36	64 38	64 45	71 49	58 49	52 45	50 37	53 32	39 32	62 36	61 49	60 47	55 38	62 41	55 34	51 34	46 38	51 37	55 35	58 35	61 39	73 44	78 57	62 44	63 43	71 46	77 54	60.2 41.3	0700 EDT	

ACON MD / DE / DC
MAY 2008 DAILY PRECIPITATION

STATION	1	2	3	4	5	6	7	8	9	10	11	12	13	14	15	16	17	18	19	20	21	22	23	24	25	26	27	28	29	30	31	TOTAL	OBS TIME
BEAR 2 SW, DE GALLAHER	0.02		T					0.02	2.50	0.01	0.09	0.88		T		0.84	0.01	0.30		0.58	0.03									0.27	5.68 0.0	2400 EDT	
WILMINGTON, DE NWS NEW CASTLE CO APT	0.01		0.01					0.02	1.94		0.09	0.55		T	T	0.94	0.01	0.31		0.65	T	T				T	0.11	T		0.48	5.12 0.0	2400 EST	
NEWARK AG FARM, DE U OF DE DEOS	0.01							0.02	2.18		0.05	0.70				0.96	0.01	0.36		0.62										0.56	5.57	2400 EDT	
TOWNSEND 4 W, DE U of D REC DEOS								0.07	2.64	0.09	0.38	2.35				0.68		0.13		0.59	0.03									0.19	7.40	2400 EDT	
GEORGETOWN, DE NWS SUSSEX CO APT			T	0.01				0.02	0.92	0.10	0.43	2.62				0.54	T	0.01		0.29	0.04						T	T		1.14	6.12 -	2400 EST	
GEORGETOWN, DE U of D REC DEOS								0.01	1.03	0.09	0.92	1.78				0.55				0.27	0.03									1.04	5.72	2400 EDT	
HARBESON 8 S, DE U of D REC DEOS				0.07				0.02	0.43	0.35	0.27	2.57				0.41				0.28	0.11							0.02		0.77	5.30	2400 EDT	
FROSTBURG LATTA	0.01		0.05	1.27				0.14	0.38	1.01	0.05	1.25	0.16		0.03	0.66	0.15	0.47	0.27	0.26	0.22	0.07								T	6.95 0.0	0700 EDT	
LAVALE MULLINS**	T		0.57			T	T	0.12	0.14	1.25	1.53	0.09		0.04	0.01	0.61	0.11	0.59	T	0.50	0.04				T	0.04	0.09	0.01		1.02	6.76 0.0	2400 EDT	
PASADENA 2N HANSON	0.01							0.07	3.00	0.18	0.88	1.66				0.47		0.06		0.58	0.01									0.18	7.10 0.0	2400 EDT	
LOTHIAN JUG BAY		0.01						0.01	1.86		0.43	6.59	0.66			1.03			0.07	0.56		0.01									11.23 0.0	0900 EDT	
BWI NWS ASOS	0.01		0.01					0.34	1.85	0.27	1.49	2.20			T	0.60	T	0.08		0.67	T	T					T	T		0.25	7.77 0.0	2400 EST	
LAUREL 2 E STOUDT	0.03		T					0.88	1.63	0.25	2.01	1.91			T	0.82		0.10		0.63	0.01									0.41	8.68 0.0	2400 EST	
OWINGS MILLS 2SE SHARROW	T		T			T		0.08	1.02	0.23	1.01	1.84		T		0.52		0.20		0.43	0.04									0.39	6.11 0.0	2400 EDT	
BALTIMORE 2SE MANFRE	T							0.03	1.61	0.23	0.82	1.11				0.61		0.14		0.70	0.01									0.30	5.64 0.0	1800 EDT	
BALT INNER HARBOR MD SCIENCE CENTER		M	M					0.09	1.67	0.24	0.89	0.80				0.59		0.16		0.47										0.34	5.36 -	2400 EST	
MANCHESTER 1SW CLOSE	T			0.06		0.01		0.03	0.90	0.31	0.77	1.84				0.73	0.04		0.01	0.60	0.04					T	0.30	0.01		0.52	6.17 0.0	2300 EDT	
WESTMINSTER 4 SSE HARTSOCK	T			0.04				0.01	0.83	0.30	0.18	2.17	0.06			0.61		0.24		0.56	0.10									0.53	6.37 0.0	1900 EDT	
WESTMINSTER 5 SSE KLEIN				0.04				0.06	0.82	0.30	0.60	2.04				0.64		0.25		0.60	0.09									0.55	6.80 0.0	2200 EDT	
MILLERS 4NE MILLER	T			0.03				0.01	0.95	0.29	0.12	2.12	0.06		T	0.81	0.04	0.32	T	0.62	T	T								0.50	6.38 0.0	1800 EDT	
WESTMINSTER CITY MULLER	T	0.02		0.05		0.01		0.06	0.75	0.48	0.16	2.22				0.93	0.04	0.45		0.47	0.08									0.67	6.87 0.0	1900 EST	
BRYANS ROAD 2 ESE BRUMBACK	0.02							0.51	3.33	0.30	3.14	1.62	0.01		0.56	0.49		0.09	0.01	0.47	0.01						T	T		1.19	11.75 0.0	2400 EDT	
EMMITSBURG 2 SE GLASS								T	0.49	0.63	0.09	2.23	0.40			0.23	0.37		0.23	0.23	0.21										5.43 0.0	0630 EDT	

**ACON MD / DE / DC
MAY 2008 DAILY PRECIPITATION**

STATION	1	2	3	4	5	6	7	8	9	10	11	12	13	14	15	16	17	18	19	20	21	22	23	24	25	26	27	28	29	30	31	TOTAL	OBS TIME	
FREDERICK 3 WNW LAWRENCE																																2300 EDT		
EAGLE ROCK HARVEY	0.05			0.75					0.80	0.90		1.13 T				1.40	0.10	0.37	0.40	0.40	0.20	0.16						1.30	0.12			T	8.08 T	0800 EDT
LAUREL JHU / APL GIANNOLA	0.01							0.09	1.16	0.28	1.15	1.42				0.63		0.10		0.60											0.52	5.96 0.0	2400 EDT	
POTOMAC 4N COHEN	0.03			T				0.12	1.30	0.40	1.40	1.78				0.74		0.13		0.70	0.03	0.02									0.42	7.07 0.0	2100 EDT	
OLNEY 1 S GIANNOLA	0.02							>	1.25	0.38	>	2.94				0.84	0.02	0.10		0.73	0.03							T	T		0.46	6.77 0.0	2400 EDT	
CLARKSBURG 2ENE HOLDEN	T		T					0.54	0.61	0.47	2.63	0.94			0.03	0.54	0.02	0.04		0.77	0.03										0.77	7.40 0.0	2400 EST	
MONTGOMERY VILLAGE ROTH 1SW								0.15	0.90	0.48	1.82	0.44				0.69		0.09		0.72	0.02										0.28	5.59 0.0	2400 EDT	
GLENMONT 1NNE ROSSEN	0.02		T					0.74	0.85	0.35	2.13	1.09			0.07	0.78	T	0.09		0.68	0.02							T	T		0.38	7.20 0.0	2400 EST	
BETHESDA SCAFIDE	0.02							0.41	1.10	0.32	0.85	0.85	0.15	0.02	0.02	1.02		0.13		0.60	0.02										0.93	6.44 -	2400 EDT	
GAITHERSBURG 2WNW SHAW	0.02		T					0.24	0.91	0.43	2.32	0.98			T	0.65	0.02	0.06		0.72	0.04							T	0.05		0.21	6.65 0.0	2400 EDT	
FOREST GLEN TERRY	0.01		T					0.44	1.59	0.32	2.05	1.20			0.03	0.83	T	0.16		0.65	0.01										0.76	8.05 0.0	2400 EDT	
OXON HILL SMITH	0.02		T					0.16	3.97	0.29	2.70	2.06			0.25	0.80		0.05		0.60	0.01										1.87	12.78 0.0	2300 EDT	
HOLLYWOOD ABELL	T							0.20	0.83	0.26	2.56	1.11	0.01		0.41	1.56		0.16	0.01	0.27											1.03	8.41 0.0	2359 EDT	
RIDGE ZYLA								0.26	1.07	0.49	1.52	0.60				1.25		0.05		0.27	0.09										0.87	6.51 0.0	2400 EDT	
SMITHSBURG 1.5 SW HUTTO	T		0.01	0.01				0.11	0.35	0.56	1.11	1.86	0.01			0.47	0.05	0.28		0.43	0.06						0.11	0.04			0.61	6.07 0.0	2400 EDT	
HAGERSTOWN 1E KEEFER	T		0.01					0.09	0.29	0.49	1.02	1.67	0.01		0.01	0.56	0.06	0.22		0.48	0.09						0.08	0.05			0.89	6.02 0.0	2400 EDT	
SMITHSBURG 2 NE VAUGHN				0.01				0.12	0.27	0.52	1.52	3.07				0.23	0.04	0.30		0.50	0.04						0.21	0.01			0.59	7.43 0.0	2400 EDT	
SALISBURY NWS WICOMICO CO APT				0.01				0.10	1.19	0.07	1.19	0.72			T	1.15	T	0.05		0.28	0.06							0.01	0.06		1.13	6.02 0.0	2400 EDT	
WASH NATIONAL NWS ASOS	0.04		T					1.32	2.22	0.22	2.63	1.32			0.29	0.53	0.01	0.05		0.58	T							T	T		1.45	10.66 0.0	2400 EST	
WASH DULLES NWS ASOS	0.04		T					1.46	0.85	0.29	3.73	0.78			0.28	0.55	T	0.06		0.69	0.07						0.01	T	T		0.57	9.38 0.0	2400 EST	
STERLING 4 N SHAFFER	0.04		T					0.55	0.90	0.31	2.40	1.55	T		0.02	0.48	0.01	0.06	T	0.75	0.06	T				0.01	0.01			0.58	7.73 0.0	2400 EDT		
DAVIS 3 SE WV LESHER	0.02	0.01		0.16				0.32	0.86	1.21	0.16	1.11 0.1	0.13 0.4		0.14	0.82	0.40	0.15	0.60	0.75	0.37	0.12	0.03					0.44	0.13		0.02	7.95 0.5	0700 EDT	