



<http://www.jhuapl.edu/weather/education/ACONdata.html>

ATLANTIC COAST OBSERVER NETWORK, MD / DE / DC CHAPTER WITH DATA FROM NEARBY AREAS

WARM MONTH - DRIEST MAY SINCE 1991 SCATTERED SEVERE THUNDERSTORMS

May will be remembered by its dryness and warmth. After a wet April rainfall amounts were far below normal. The driest area was clustered around Washington DC. The coldest temperatures occurred on the 7th and 8th while the warmest the last week of the month. The only freezing temperature observed occurred on Maryland's Eastern Shore at Salisbury Wicomico County Airport. Memorial Day weekend was quite warm with scattered thunderstorms some of which reached severe level on Sunday the 27th.

May began on a warm note with the warmest in Central and Western Maryland. A few scattered light showers fell. The heaviest measured was 0.55" by **John Zyla** of **Ridge** on the 2nd. More light rains fell on the 5th from the Washington DC region east and south. The heaviest rains fell in St. Marys County where **Floyd Abell** of **Hollywood** reported 0.63" and **John Zyla** of **Ridge** 0.51".

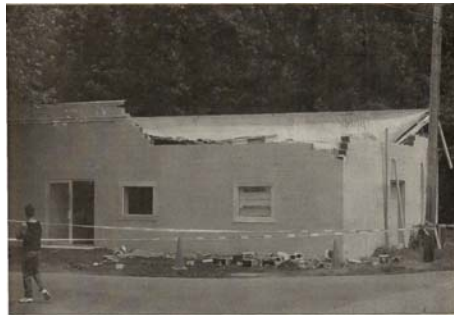
The 6th was cooler and breezy. Maximum temperatures were generally in the 60 to 65 degree range. Temperatures fell into the 30's on the mornings of the 7th and 8th at many cooler locations. No freezing temperatures were reported. Scattered light frost was reported by some ACON observers from Northern Delaware westwards through Northern Maryland.

A cold front stalled over the region on the 12th. Scattered showers and thundershowers occurred during the evening. Amounts were fairly light with amounts generally less than a half an inch. **Joe Manfre** of **Baltimore 2 SE** reported 0.74".

The 13th was cooler. Northerly winds gusted into the 20's while temperatures cooled down to around 70°.

A strong cold front moved east through the region the afternoon of the 16th. It brought showers and thunder-

storms, some severe. Rainfall amounts varied from less than a tenth of an inch to over an inch. The heaviest rains fell in Charles County Maryland and New Castle County Delaware. **Marty Brumback** of **Bryans Road 2 ESE** reported 1.74" while **Gary Gallaher** of **Bear 2 SW DE** 0.96". A severe thunderstorm moved through Charles County. **Marty Brumback** of **Bryans Road 2 ESE** reported a 47 MPH gust along with heavy rains. (See Marty's complete report on the Observer Comment Page). The winds caved in a portion of the Charles County Sheriff's District 2 station roof in Indian Head. See photo below.



© Maryland Independent May 18, 2007
Photo supplied by Marty Brumback

Cooler temperatures moved in following the front. Normal to below normal temperatures remained through the 24th.

The first summer like heat began on the 25th and peaked on the 26th with readings in the upper 80's to lower 90's. **Joe Manfre** of **Baltimore 2 SE** reported 96°.

Isolated thunderstorms occurred on the afternoon of the 26th. As typical for the month, most amounts were generally light. There was a pocket of heavy rains and with strong winds Over an inch fell in parts of Carroll County. **Ray Muller** of **Westminster City** reported 1.50" and **Herb Close** of **Manchester 1 S** 1.09".

EXTREMES REPORTED BY ACON OBSERVERS

MAXIMUM TEMPERATURE

Baltimore 2 SE	96
Montgomery Village 1SW	93
Glenmont 1 NNE	93

MINIMUM TEMPERATURE

Davis 3 SE WV	33
LaVale	34
Millers 4 NE	34
Eagle Rock	34
Smithsburg 1.5 SW	34

WARMEST AVG. TEMP.

Baltimore 2 SE	71.8
Oxon Hill	68.3

COLDEST AVG. TEMP.

Davis 3 SE WV	57.3
Eagle Rock	58.8
Frostburg	60.4

MAXIMUM PRECIPITATION

Davis 3 SE WV	3.09
Westminster City	2.79
Bryans Road 2 ESE	2.44

MINIMUM PRECIPITATION

UofD Harbeson 8 S DE	0.47
Laurel JHU/APL	0.48

Bobby Miller of **Millers 4 NE** and **Al Kreinik** of **Parkton 5 SW** in Northwestern Baltimore County both lost power for 12 hours.

Memorial Day (the 28th) was still warm but a little cooler. 90 degree temperatures returned to part of the region for the 30th and 31st. Many observers reported browning lawns by month's end.

OBSERVER COMMENTS FOR MAY 2007

Gary Gallaher of Bear 2 SW, DE

Warm days, cool nights. All of the rain fell mid month within a one week period. Sunny month - only two cloudy days.

Nate Mullins of LaVale

May was the second warmest and the driest. The average maximum temperature was the warmest on record. Measurable rain fell on only 5 days. Thunderstorms were few.

18th - A period of much needed steady rain began this morning around 6 AM and lasted until 3 PM.

31st - Thunder and gusty winds around 5 PM but no rain. Strong storms all around us again.

Jeff Stoudt of Laurel 2 E

May was unusually dry and probably was the driest May in a long time. Most of the rainfall was convective in nature and of short duration. The combination of increasing heat with skimpy rainfall resulted in soft green grass turning brown and straw-like by month's end.

Al Kreinik of Parkton 5 SW

28th - Evening thunderstorm. Power out for approximately 12 hours.

Marty Sharrow of Owings Mills

May was one of the driest Mays on record for my station. Records date back to 1966. The ground is hard as a rock. Some of the vegetation was showing signs of stress at month end.

Joe Manfre of Baltimore 2SE

7th - Variable clouds, cool, breezy in the afternoon.

27th - Hot, with moderate humidity. Evening light showers and thunderstorms.

Ralph Hartsock of Westminster 4 SSE

7th - Frosty morning. Sunny and cooler.

27th - Hot, humid. Late severe thunderstorms.

31st - Sunny, hot.

Bobby Miller of Millers 4 NE

Driest May since 1991.

7th - AM frost.

19th - Wind squall at 5:11 PM 59 MPH gust from NNW.

27th - 0.70" of rain fell in 15 minutes. Lightning knocked the Heathkit and Nimbus MMTS sensors out at 7:45 PM. Power out for 12 hours.

Marty Brumback of Bryans Road 2 ESE

16th - At approximately 1640 a rapidly moving shelf cloud darkened the station. Strong winds and rains occurred shortly thereafter. At 1646 a 46 MPH gust was recorded. At 1655 torrential downpours and strong winds bent 40 to 50 foot fully leafed trees 30 to 40 degrees side to side. Frequent CGCC lightning. The air was filled with leaf cluster ripped from trees; at times the clusters were moving in different directions.

Rebecca Harvey of Eagle Rock

17th & 29th - Thunder

Rob Cohen of Potomac 4 N

Driest May on record.

Rich Giannola of Olney 1 S

20th - Few large raindrops fell for about 1 minute around 2 PM totaled a Trace.

27th - Gusty winds 6:30 PM. Thunderstorm (TSRA) 6:40 PM, rain ending by 8:00 PM.

Stan Rossen of Glenmont 1 NNE

Driest May in station history. Old record of 0.92" was set in 1991.

Kevin Shaw of Gaithersburg 2 WNW

Driest May in my 29 years that records have been observed here. Old record was 1.19" set in 1991. May was also the third warmest behind 1991 and 2004. Five of the last seven days registered 90 degrees or greater.

Joe Terry of Forest Glen

No major rain events, mostly brief showers and thunderstorms. Quite a few cool days early and mid month, then ending hot.

16th - Late afternoon thunderstorm with gusty winds to 36 MPH and brief heavy rain. 0.40" fell in 5 minutes.

27th - Two PM thunderstorms. Dew point reached 75° between the storms.

Brian Smith of Oxon Hill

12th - +TSRA 2100 to 2145 hours.

27th - Light thunderstorm (-TSRA) 1830 to 1900 with lots of lightning but little rain.

Floyd Abell of Hollywood

5th - Rainy afternoon and evening.

16th - Late day and evening thundershowers.

John Zyla of Ridge

No rain fell during the last 13 days.

Max Hutto of Smithsburg 1.5 SW

10th - AM light fog, warm, PM nearby thunderstorms, windy, rain heavy at times.

30th - Hot, sunny, and breezy.

Greg Keefer of Hagerstown 1 E

7th - A touch of frost in some places.

10th - Showers and thundershowers 8 PM to midnight. Storms were heavier just of the north of the PA line.

27th - Thunderstorms in the area between 5:30 PM and 8 PM. Some strong winds to 43 MPH around 5:30 PM.

29th - 100% sunshine.

Jim Vaughn of Smithsburg 2 NE

10th - 65° minimum set a new daily high minimum surpassing 61 set in 2004.

Lance Shaffer of Sterling 4 N VA

Too dry this month.

Compiled by Gary Gallaher, MD/DE ACON Data Collector and Report Writer, from data received from dedicated observers. Without your observations each month this report will not be possible.

ACON MD / DE / DC
MAY 2007 SUMMARY

OBSERVER	STATION <i>COUNTY, STATE</i>	TEMPERATURE									PEAK WIND			PRECIPITATION					SNOWFALL				OBS TIME	
		AVG MAX	AVG MIN	MEAN	MAX	DAY	MIN	DAY	MAX >=90	MAX <=32	MIN <=32	GUST	DIR	DAY	TOTAL	MAX DAY	DATE	YEAR	DAYS >=.01"	DAYS >=1"	TOTAL	MAX DAY		DATE
<i>New Castle, Delaware</i>																								
Gallaher, Gary	Bear 2 SW	76.2	50.6	63.4	90	31	36	7+	1	0	0	36	NNW	16	1.47	0.96	16	20.72	5	0	0.0	0.0	12.6	2400
NWS Wilmington	New Castle Co. Apt.	76.4	53.2	64.8	90	26+	39	8	2	0	0	43	NW	19	1.02	0.75	16	19.64	3	0	0.0	0.0	12.6	2400
U of DE DEOS	UofD AG Farm Newark, DE	77.6	52.8	65.2	92	31	39	8	2	0	0	21		16	1.01	0.62	16	18.13	5	0				2400
U of D Townsend Farm	Townsend 4 W	75.3	52.3	63.8	88	31	36	8	0	0	0	33		27	1.67	0.74	16	10.26	6	0				2400
<i>Sussex, Delaware</i>																								
NWS Georgetown	Sussex Co. Airport	75.9	51.3	63.6	90	26+	40	5	2	0	0	38	ENE	6	1.01	0.32	16	14.90	6	0				2400
U of D Research & Ed Ctr	Georgetown	75.9	51.7	63.8	91	26	40	5+	2	0	0				0.85	0.30	13	12.86	6	0		7.3	2400	
U of D Warrington Farm	Harbeson 8 S	73.3	51.4	62.4	89	27	38	5	0	0	0	33		6	0.47	0.19	13+	<u>9.96</u>	4	0				2400
<i>Allegany, Maryland</i>																								
Latta, Greg	Frostburg	73.1	47.6	60.4	84	2+	38	7+	0	0	0				1.45	0.84	19	14.75	7	0	0.0	0.0	65.0	0700
Mullins, Nate**	LaVale	78.2	50.4	64.3	91	31	34	7	2	0	0				0.87	0.62	18	12.13	5	0	0.0	0.0	35.3	2400
<i>Anne Arundel, Maryland</i>																								
Hanson, Dan	Pasadena 3 SW	78.3	52.4	65.4	92	26	36	8	3	0	0	35	SSW	27	1.36	0.71	12	14.99	8	0	0.0	0.0		2400
Jug Bay Wetlands	Lothian	79.9	53.8	66.9	92	27	36	8	3	0	0				1.17	0.57	13	14.46	4	0	0.0	0.0	3.5	0900
NWS Baltimore	BWI Airport	78.1	52.9	65.5	92	26	36	8	3	0	0	48	W	16	0.94	0.52	16	14.63	6	0	0.0	0.0	11.0	2400
Stoudt, Jeff	Laurel 2 E	78.7	54.9	66.8	91	26+	39	7+	2	0	0				0.65	0.30	12	14.94	6	0	0.0	0.0	12.9	2400
<i>Baltimore, Maryland</i>																								
Kreinik, Al	Parkton 5 SW	76.2	48.2	62.2	89	31	35	7	0	0	0				1.73	0.88	28	17.79	7	0	0.0	0.0	19.3	2200
Sharrow, Marty	Owings Mills 2 SE	76.7	52.4	64.6	90	31	37	7	1	0	0				0.99	0.67	16	12.70	3	0	0.0	0.0	18.0	2400
<i>Baltimore City, Maryland</i>																								
Manfre, Joe	Baltimore 2 SE	81.3	62.3	71.8	96	26	49	7	7	0	0				1.24	0.74	12	13.99	7	0	0.0	0.0	11.2	1800
Maryland Science Ctr	Baltimore Inner Harbor	80.7	62.2	71.5	95	26	49	7	5	0	0				1.49	1.09	12	13.06	8	1				2400
<i>Carroll, Maryland</i>																								
Close Jr, Herb	Manchester 1 SW	75.8	53.4	64.6	89	31	40	7	0	0	0				2.24	1.09	27	18.47	10	1	0.0	0.0	22.7	2300
Hartsock, Ralph	Westminster 4 SSE	76.2	50.4	63.3	89	27	35	7	0	0	0				1.80	0.60	27	<u>19.32</u>	7	0	0.0	0.0	18.3	2000
Klein, Greg	Westminster 5 SSE	M	M	M											1.83	M	M	18.45			0.0	0.0	24.3	2200
Miller, Bobby	Millers 4 NE	75.2	49.5	62.4	87	31	34	7	0	0	0	58	NNW	19	1.81	0.92	28	17.81	7	0	0.0	0.0	22.3	1800
Muller, Ray	Westminster City	77.1	53.4	65.3	89	26	36	7	0	0	0	45	W	27	2.79	1.50	27	17.64	9	1	0.0	0.0	21.7	1900
<i>Charles, Maryland</i>																								
Brumback, Marty	Bryans Road 2 ESE	78.9	54.7	66.8	92	26	38	8	2	0	0	47		16	2.44	1.74	16	13.61	5	1	0.0	0.0	10.0	2400
<i>Frederick, Maryland</i>																								
Glass, Eric	Emmitsburg 2 SE	75.2	49.4	62.3	85	27+	36	7	0	0	0				1.02	0.45	11	<u>12.77</u>	7	0	0.0	0.0	19.9	0700
Lawrence, Bryon	Frederick 3 WNW																							2300
<i>Garrett, Maryland</i>																								
Harvey, Rebecca	Eagle Rock	71.8	45.8	58.8	82	10+	34	6+	0	0	0				2.38	0.80	17	19.23	7	0	0.0	0.0	124.6	0800

**ACON MD / DE / DC
MAY 2007 SUMMARY**

OBSERVER	STATION <i>COUNTY, STATE</i>	TEMPERATURE									PEAK WIND			PRECIPITATION					SNOWFALL				OBS TIME		
		AVG MAX	AVG MIN	MEAN	MAX	DAY	MIN	DAY	MAX >=90	MAX <=32	MIN <=32	GUST	DIR	DAY	TOTAL	MAX DAY	DATE	YEAR	DAYS >=.01"	DAYS >=1"	TOTAL	MAX DAY		DATE	SEA- SON
<i>Howard, Maryland</i>																									
Giannola, Rich	Laurel JHU / APL	78.1	55.3	66.7	91	26+	40	8	2	0	0	34	W	16	0.48	0.23	16	12.46	7	0	0.0	0.0		12.5	2400
<i>Montgomery, Maryland</i>																									
Cohen, Rob	Potomac 4 N	77.6	54.5	66.1	89	31	38	8	0	0	0				0.72	0.39	12	13.27	7	0	0.0	0.0		14.3	2100
Giannola, Rich	Olney 1 S	77.1	54.6	65.9	90	26	40	7+	1	0	0				0.74	0.38	16	13.11	7	0	0.0	0.0		15.1	2400
Roth, David	Montgomery Village 1SW	78.6	56.5	67.6	93	26+	41	8	3	0	0	19		2	0.65	0.18	16	14.16	6	0	0.0	0.0		12.7	2400
Rossen, Stan	Glenmont 1 NNE	79.2	52.4	65.8	93	31	38	8	2	0	0	20		6	0.72	0.35	16	13.38	5	0	0.0	0.0		14.1	2400
Scafide, Tony	Bethesda	75.4	55.1	65.3	88	26	41	8	0	0	0	15	WNW	16	0.82	0.35	16	10.95	5	0					2400
Shaw, Kevin	Gaithersburg 2 WNW	79.4	53.5	66.5	92	26	38	8	5	0	0				0.78	0.26	13	14.29	4	0	0.0	0.0		18.8	2400
Terry, Joe	Forest Glen	80.0	54.2	67.1	92	26	38	8	5	0	0	36	W	16	1.50	0.56	16	14.89	7	0	0.0	0.0		15.4	2400
Wash Gas Light	Rockville 1 NE	77.8	55.8	66.8	91	31	40	8	3	0	0				0.57	0.17	12	11.53	5	0	0.0	0.0		5.6	2400
<i>Prince Georges, Maryland</i>																									
Smith, Brian	Oxon Hill	79.6	56.9	68.3	92	26	41	8	2	0	0				1.09	0.57	12	14.61	4	0	0.0	0.0		13.1	2300
<i>St. Marys, Maryland</i>																									
Abell, Floyd	Hollywood	77.9	56.5	67.2	91	26	40	8	1	0	0	33		6	2.08	0.88	16	17.18	7	0	0.0	0.0		7.8	2400
Zyla, John	Ridge	76.2	56.7	66.5	90	27	46	7	1	0	0	37		16	1.76	0.55	2	16.07	6	0	0.0	0.0		7.1	2400
<i>Washington, Maryland</i>																									
Hutto, Max	Smithsburg 1.5 SW	78.8	49.6	64.2	90	30+	34	7	2	0	0	28	NE	6+	1.90	0.76	10	14.66	11	0	0.0	0.0		22.4	2400
Keefer, Greg	Hagerstown 1 E	76.9	51.7	64.3	89	31	35	7	0	0	0	43	W	27	1.27	0.57	16	13.93	8	0	0.0	0.0		23.6	2400
Vaughn, Jim	Smithsburg 2 NE	75.7	54.0	64.9	88	30+	40	7	0	0	0	46	NE	6	1.97	0.67	10	13.15	9	0	0.0	0.0		21.7	2400
<i>Wicomico, Maryland</i>																									
NWS Salisbury	Wicomico Co. Apt	75.8	46.6	61.2	89	26+	32	14	0	0	1	38	NW	2	0.97	0.41	13	15.33	10	0	0.0	0.0		3.4	2400
<i>Arlington, Virginia</i>																									
NWS Washington National	National Airport	77.6	58.0	67.8	91	26	44	8	1	0	0	44	SSW	1	1.75	0.93	12	13.79	4	0	0.0	0.0		9.5	2400
<i>Loudon, Virginia</i>																									
NWS Washington Dulles	Dulles Airport	78.5	53.6	66.1	92	26	36	8	2	0	0	39	WSW	27	0.34	0.12	12	11.30	7	0	0.0	0.0		14.7	2400
Shaffer, Lance	Sterling 4 N	76.3	56.2	66.3	90	26	41	7+	1	0	0				0.61	0.14	16	12.24	9	0	0.0	0.0		20.3	2400
<i>Tucker, West Virginia</i>																									
Leshner, Dave	Davis 3 SE WV	67.7	46.8	57.3	78	10	33	6+	0	0	0				3.09	1.11	19	30.02	10	1	T	T	18	193.6	0700
SECTION AVERAGE*		77.2	53.2	65.2											1.28		15.13				0.0			19.7	

NOTES:

M OR UNDERLINE = MISSING DATA
 > = INCLUDED IN NEXT DAYS DATA
ITALIC = ESTIMATED DATA

*SECTIONAL AVERAGE DOES NOT INCLUDE DATA FROM WEST VIRGINIA.

**OBSERVERS FOR LAVALLE ARE DAVID DREWERY AND CHARLES ORLICK. DATA COMPILED BY NATE MULLINS.

National Weather Service station data listed herein is preliminary and may be subject to change. The data has not been certified and cannot be used in legal actions.
 Only reports certified by the National Climatic Data Center in Asheville, NC may be used for these purposes.
 Accuracy of Data from ACON Observers not guaranteed.

GARY GALLAHER 11/19/07

**ACON MD / DE / DC
MAY 2007 DAILY TEMPERATURES**

STATION	1	2	3	4	5	6	7	8	9	10	11	12	13	14	15	16	17	18	19	20	21	22	23	24	25	26	27	28	29	30	31	AVG	OBS TIME	
BEAR 2 SW, DE GALLAHER	71	74	70	71	72	61	66	74	78	78	82	80	70	69	81	82	70	62	70	76	72	77	74	79	86	89	88	83	81	85	90	76.2	2400 EDT	
WILMINGTON , DE NWS NEW CASTLE CO APT	69	75	68	69	71	62	67	71	78	78	83	81	72	68	82	84	71	64	72	77	73	76	74	80	85	90	88	84	82	85	90	76.4	2400 EST	
NEWARK AG FARM, DE U OF DE DEOS	74	74	71	73	75	62	67	77	80	81	83	81	70	72	83	84	70	64	70	76	72	79	77	81	87	90	89	84	81	87	92	77.6	2400 EST	
TOWNSEND 4 W, DE U of D DE Townsend Farm	70	75	68	70	71	60	65	72	78	79	82	78	69	69	82	83	68	61	69	75	71	76	75	78	84	87	87	81	80	84	88	75.3	2400 EST	
GEORGETOWN, DE NWS SUSSEX CO APT	72	79	66	66	74	58	59	69	80	79	84	76	68	70	81	84	68	56	70	77	73	77	75	81	85	90	90	88	82	86	89	75.9	2400 EST	
GEORGETOWN, DE UofD RESEARCH & ED CTR	74	79	65	67	73	58	59	69	81	78	83	75	68	73	80	83	69	57	70	77	73	78	74	80	84	91	90	88	84	84	88	75.9	2400 EST	
HARBESON 8 S, DE UofD WARRINGTON FARM	67	75	62	63	73	55	54	66	77	77	80	73	64	66	81	84	66	54	M	75	70	73	72	80	84	89	89	87	77	83	88	73.3	2400 EST	
FROSTBURG LATTA	76	84	74	59	69	63	60	68	78	83	83	79	77	68	68	82	66	57	51	64	69	70	77	76	79	81	82	82	77	79	84	73.1	0700 EDT	
LAVALE MULLINS**	89	81	64	72	67	65	72	80	87	85	82	78	72	75	86	72	62	55	73	74	72	82	83	83	86	87	87	86	87	90	91	78.2	2400 EDT	
PASADENA 3 SW HANSON	75	82	69	72	73	63	66	75	79	80	86	82	71	72	85	86	71	63	74	80	75	77	76	81	88	92	90	87	84	85	91	78.3	2400 EDT	
LOTHIAN JUG BAY	87	79	86	68	72	72	63	67	76	83	81	81	82	M	76	86	86	72	M	76	83	78	77	78	81	87	92	90	90	M	88	79.9	0900 EDT	
BALTIMORE NWS BWI APT	74	83	69	71	70	63	66	75	79	80	85	81	71	71	85	85	70	63	73	78	73	76	77	82	88	92	90	86	86	87	91	78.1	2400 EST	
LAUREL 2 E STOUDT	78	82	71	74	70	64	67	76	80	83	85	85	70	73	84	85	71	62	72	78	73	78	80	83	88	91	89	83	86	89	91	78.7	2400 EST	
PARKTON 5SW KREINIK	74	76	69	71	72	62	67	75	78	80	84	82	68	68	84	79	63	61	69	76	70	79	80	77	85	87	84	82	84	86	89	76.2	2200 EDT	
OWINGS MILLS 2SE SHARROW	74	78	71	72	72	63	68	75	77	81	82	82	68	71	85	84	68	60	70	74	71	77	78	81	85	87	86	81	82	86	90	76.7	2400 EDT	
BALTIMORE 2SE MANFRE	77	82	71	74	74	67	69	77	81	83	87	84	75	74	89	88	73	67	77	82	78	79	82	86	91	96	91	91	90	90	95	81.3	1800 EDT	
BALT INNER HARBOR MD SCIENCE CENTER	76	82	71	73	74	66	69	76	80	83	88	84	73	74	88	88	73	67	77	83	77	79	80	85	90	95	90	90	89	88	94	80.7	2400 EST	
MANCHESTER 1SW CLOSE	73	74	69	70	70	59	65	74	77	80	81	81	65	68	83	83	68	61	70	74	70	75	77	81	88	88	88	82	81	86	89	75.8	2300 EDT	
WESTMINSTER 4 SSE HARTSOCK	74	77	69	71	73	58	64	71	78	80	80	82	63	70	84	86	72	62	70	76	69	77	76	78	86	88	89	83	83	84	88	76.2	2000 EDT	
WESTMINSTER 5 SSE KLEIN	M	M	M	M	M	M	M	M	M	M	M	M	M	M	M	M	M	M	M	M	M	M	M	M	M	M	M	M	M	M	M	M	M	2200 EDT
MILLERS 4NE MILLER	77	72	68	69	68	61	66	74	77	79	79	79	73	67	82	80	64	62	69	74	72	75	76	79	86	86	85	82	79	83	87	75.2	1800 EDT	
WESTMINSTER CITY MULLER	74	75	68	73	68	66	70	73	80	82	82	80	68	68	85	84	70	62	70	77	71	75	80	83	86	89	88	83	84	88	89	77.1	1900 EDT	
BRYANS ROAD 2 ESE BRUMBACK	80	84	66	74	69	64	67	76	82	81	88	83	73	76	85	84	71	60	73	82	73	78	78	81	88	92	88	87	87	87	90	78.9	2400 EDT	
EMMITTSBURG 2 SE GLASS	82	78	77	67	70	69	62	66	74	78	81	80	77	66	67	83	79	67	59	70	75	70	76	77	79	84	85	85	81	81	85	75.2	0700 EDT	

**ACON MD / DE / DC
MAY 2007 DAILY TEMPERATURES**

STATION	1	2	3	4	5	6	7	8	9	10	11	12	13	14	15	16	17	18	19	20	21	22	23	24	25	26	27	28	29	30	31	AVG	OBS TIME	
FREDERICK 3 WNW LAWRENCE																																		2300 EDT
EAGLE ROCK HARVEY	74 54	80 56	72 42	58 42	64 44	58 34	60 34	64 34	72 40	82 45	82 52	79 50	78 44	68 35	70 40	80 60	64 42	58 42	52 36	60 40	62 46	70 42	79 46	79 46	75 56	82 56	82 60	82 54	78 42	79 48	82 56	71.8 45.8	0800 EST	
LAUREL JHU / APL GIANNOLA	77 56	80 57	70 55	72 46	72 52	62 46	66 41	77 40	81 56	81 66	84 66	82 58	68 50	73 43	85 60	85 61	69 54	61 51	71 48	77 56	72 54	80 47	78 52	82 54	88 55	91 70	90 65	82 64	84 65	84 58	89 67	91 55.3	2400 EDT	
POTOMAC 4N COHEN	85 54	83 59	72 56	73 45	65 51	63 47	67 40	76 38	80 54	81 66	83 63	78 61	69 49	71 40	85 57	82 64	69 54	61 53	73 48	78 53	72 56	78 47	78 52	80 53	85 55	88 63	88 63	81 63	84 64	88 59	89 62	77.6 54.5	2100 EST	
OLNEY 1 S GIANNOLA	79 53	81 56	69 55	71 46	66 53	65 46	67 40	76 40	81 55	81 66	83 64	> >	79 48	70 44	84 57	81 59	65 53	58 51	70 46	78 56	72 53	76 49	78 54	80 56	86 64	90 64	87 63	81 63	84 59	87 66	89 54.6	2400 EDT		
MONTGOMERY VILLAGE ROTH 1SW	80 58	81 59	69 57	71 47	68 54	63 47	68 42	76 41	80 56	83 67	83 65	82 63	68 50	73 43	86 59	85 61	70 56	62 54	72 48	77 55	73 49	78 57	78 59	82 60	89 66	93 66	90 66	84 64	86 64	89 59	93 67	78.6 56.5	2400 EDT	
GLENMONT 1NNE ROSSEN	72 39	80 42	75 54	74 44	69 50	65 43	71 39	81 38	85 54	85 67	84 63	79 60	69 46	75 40	88 59	86 58	67 51	59 49	74 46	78 55	74 52	81 46	81 52	84 55	89 62	91 64	89 64	82 62	85 57	89 62	93 52.4	2400 EST		
BETHESDA SCAFIDE	78 57	81 55	66 54	69 48	67 52	61 47	64 42	74 41	78 56	77 66	81 64	78 61	66 50	71 44	81 57	81 61	67 53	59 49	70 48	77 56	71 51	76 49	75 54	78 55	84 58	88 65	85 65	81 64	82 62	84 61	86 64	75.4 55.1	2400 EDT	
GAITHERSBURG 2WNW SHAW	81 54	83 57	71 53	75 43	67 50	67 44	70 39	78 38	81 53	82 65	83 63	80 61	70 48	75 38	86 55	83 58	72 53	61 52	73 46	79 54	76 46	80 54	80 56	85 63	90 63	92 63	90 63	82 63	87 63	90 57	91 63	79.4 53.5	2400 EDT	
FOREST GLEN TERRY	82 56	85 55	72 53	75 45	70 52	66 45	70 39	79 38	84 56	82 66	86 64	81 60	72 46	75 41	86 58	85 53	71 52	61 46	73 54	81 57	76 47	80 52	80 54	83 57	90 64	92 64	90 64	85 65	87 64	91 60	91 54.2	2400 EDT		
ROCKVILLE 1NE WASH GAS LIGHT	80 57	78 58	70 55	72 46	67 52	61 47	66 42	76 40	83 56	81 66	83 65	80 60	67 48	75 44	87 59	83 61	67 55	60 51	71 48	77 58	73 48	80 48	M	83	88	90	90	82	84	88	91	77.8 55.8	2400 EDT	
OXON HILL SMITH	82 55	85 58	67 55	73 48	69 53	64 48	67 41	78 53	84 67	82 65	87 62	82 52	76 45	85 59	83 64	70 55	67 55	75 51	83 58	76 51	78 55	80 56	81 56	88 65	92 65	89 69	87 67	87 64	89 64	91 67	79.6 56.9	2300 EDT		
HOLLYWOOD ABELL	77 59	84 57	63 56	74 47	70 50	63 50	66 45	74 40	80 56	81 64	84 64	81 60	69 49	74 44	84 61	84 66	71 57	62 54	72 51	81 52	74 61	76 51	77 54	80 51	86 59	91 66	89 66	88 70	85 66	85 59	89 65	77.9 56.5	2359 EDT	
RIDGE ZYLA	72 53	80 55	59 53	72 51	65 51	62 50	65 46	70 50	78 59	77 65	82 62	80 53	67 51	72 49	83 60	85 59	70 57	60 55	73 50	83 59	72 54	76 53	77 50	80 54	84 62	89 67	90 70	87 70	83 65	82 59	87 65	76.2 56.7	2400 EDT	
SMITHSBURG 1.5 SW HUTTO	83 51	79 57	71 49	75 38	70 43	69 41	72 34	80 37	83 48	85 62	84 58	81 58	71 44	69 37	88 56	80 56	67 45	60 45	72 42	76 53	72 45	79 41	80 52	84 52	88 54	87 57	89 58	84 59	86 53	90 53	90 58	78.8 49.6	2400 EDT	
HAGERSTOWN 1E KEEFER	79 50	77 57	69 50	72 40	67 47	64 43	69 35	75 39	80 50	82 63	82 59	80 59	68 48	68 40	87 54	79 64	67 52	59 47	71 41	75 54	72 48	78 45	78 54	81 57	87 56	88 59	88 59	83 61	83 56	88 60	89 51.7	2400 EDT		
SMITHSBURG 2 NE VAUGHN	78 52	75 58	68 53	71 43	67 50	61 46	66 40	75 42	79 55	80 65	80 59	78 59	66 48	67 48	84 57	77 56	65 50	59 48	70 44	75 54	70 48	76 48	77 60	83 59	86 61	86 62	86 61	82 62	83 59	88 59	88 65	75.7 54.0	2400 EDT	
SALISBURY NWS WICOMICO CO APT	75 48	82 52	62 46	68 35	74 34	56 43	59 39	70 37	81 55	79 62	84 59	78 53	69 38	72 32	79 56	82 62	70 54	56 38	70 39	78 43	73 42	75 36	74 41	80 39	83 45	89 52	88 61	89 61	84 51	84 43	87 50	75.8 46.6	2400 EST	
WASH NATIONAL NWS ASOS	78 59	83 59	65 55	73 50	68 53	63 48	66 45	75 44	80 59	79 67	86 65	81 61	71 54	73 49	83 59	83 62	69 57	61 54	73 49	81 59	74 54	76 57	78 57	79 60	85 67	91 70	86 68	86 69	86 64	89 66	89 58.0	2400 EST		
WASH DULLES NWS ASOS	81 51	83 57	66 52	73 44	67 51	64 42	68 37	77 36	81 53	81 66	85 63	78 60	70 45	74 40	85 57	83 60	70 52	59 50	73 48	82 56	74 52	78 47	78 55	82 55	89 61	92 65	89 63	86 64	87 57	90 65	78.5 53.6	2400 EST		
STERLING 4 N SHAFFER	81 54	80 59	68 58	71 49	64 53	63 47	64 41	75 41	80 55	80 66	80 64	75 63	68 51	71 43	83 58	82 62	68 55	59 53	70 48	78 57	71 58	77 50	78 57	81 57	84 59	90 64	86 65	82 64	84 64	85 60	88 66	76.3 56.2	2400 EDT	
DAVIS 3 SE WV LESHER	69 49	78 55	70 45	52 42	61 45	59 33	54 33	63 35	75 41	78 50	77 52	74 55	71 45	64 42	71 48	74 58	63 40	53 35	40 33	56 33	60 46	65 50	75 52	76 52	70 53	76 53	75 53	72 58	75 55	76 57	67.7 46.8	0700 EDT		

**ACON MD / DE / DC
MAY 2007 DAILY PRECIPITATION**

STATION	1	2	3	4	5	6	7	8	9	10	11	12	13	14	15	16	17	18	19	20	21	22	23	24	25	26	27	28	29	30	31	TOTAL	OBS TIME	
BEAR 2 SW, DE GALLAHER	T	T										0.44	0.05			0.96			T	0.01							0.01					1.47 0.0	2400 EDT	
WILMINGTON , DE NWS NEW CASTLE CO APT		T									T	0.26	T			0.75	0.01		T	T							T					1.02 0.0	2400 EST	
NEWARK AG FARM, DE U OF DE DEOS												0.35	0.01			0.62	0.01										0.02					1.01	2400 EST	
TOWNSEND 4 W, DE U of D DE Townsend Farm												0.38	0.05			0.74			0.04								0.34	0.12				1.67	2400 EST	
GEORGETOWN, DE NWS SUSSEX CO APT					0.11							0.30	0.18			0.32		T	0.09	0.01												1.01 -	2400 EST	
GEORGETOWN, DE UofD RESEARCH & ED CTR					0.13							0.03	0.30			0.29			0.09	0.01												0.85	2400 EST	
HARBESON 8 S, DE UofD WARRINGTON FARM					0.07								0.19			0.19			0.02													0.47 0.0	2400 EST	
FROSTBURG LATTA		0.08				0.03					T		0.05				0.40	0.03	0.84	T										0.02		1.45 0.0	0700 EDT	
LAVALE MULLINS**	0.02	0.03			0.02					T		T				0.18		0.62														0.87 0.0	2400 EDT	
PASADENA 3 SW HANSON	0.01										0.01	0.71	0.05			0.46			0.03	0.03							0.06					1.36 0.0	2400 EDT	
LOTHIAN JUG BAY						0.05						T	0.57		T		0.50	T	M	T								0.05		M		1.17 0.0	0900 EDT	
BWI NWS ASOS	0.03	T									T	0.30	0.05			0.52		T	0.01	0.03							T					0.94 0.0	2400 EST	
LAUREL 2 E STOUDT	0.01	T			T						0.04	0.30	0.04			0.22			T								0.04					0.65 0.0	2400 EST	
PARKTON 5SW KREINK	0.01										0.25	0.01	0.29			0.28		T	T	0.01								0.88				1.73 0.0	2200 EDT	
OWINGS MILLS 2SE SHARROW	T	T										0.28				0.67		T	T	0.04						T	T	T				0.99 0.0	2400 EDT	
BALTIMORE 2SE MANFRE	T	0.01									T	0.74	0.01			0.39			0.02	0.02							0.05					1.24 0.0	1800 EDT	
BALT INNER HARBOR MD SCIENCE CENTER		0.01									0.02	1.09	0.01			0.26			0.03	0.02							0.05					1.49 -	2400 EST	
MANCHESTER 1SW CLOSE	T	T								0.16	0.04	0.18	0.01			0.52	0.01	0.21	0.01	0.01							1.09					2.24 0.0	2300 EDT	
WESTMINSTER 4 SSE HARTSOCK											0.07		0.38			0.49		0.18	0.01	0.07							0.60					1.80 0.0	2000 EDT	
WESTMINSTER 5 SSE KLEIN	M	M	M	M	M	M	M	M	M	M	M	M	M	M	M	M	M	M	M	M	M	M	M	M	M	M	M	M	M	M	M	M	1.83 0.0	2200 EDT
MILLERS 4NE MILLER	0.02	T									0.23	T	0.28			0.31	T	T	0.02	0.03						T		0.92				1.81 0.0	1800 EDT	
WESTMINSTER CITY MULLER	0.01										0.11		0.43			0.54	0.02	0.07	T	0.09							1.50	0.02				2.79 0.0	1900 EDT	
BRYANS ROAD 2 ESE BRUMBACK					0.51							0.01	0.05			1.74											0.13					2.44 0.0	2400 EDT	
EMMITTSBURG 2 SE GLASS											0.45		0.16				0.14		0.01	0.02						0.22		0.02				1.02 0.0	0700 EDT	

**ACON MD / DE / DC
MAY 2007 DAILY PRECIPITATION**

STATION	1	2	3	4	5	6	7	8	9	10	11	12	13	14	15	16	17	18	19	20	21	22	23	24	25	26	27	28	29	30	31	TOTAL	OBS TIME	
FREDERICK 3 WNW LAWRENCE																																2300 EDT		
EAGLE ROCK HARVEY		0.27			T	T										0.01	0.80	0.50	0.63	0.05									0.12			2.38 0.0	0800 EST	
LAUREL JHU / APL GIANNOLA	T	T									0.01	0.05	0.05			0.23		0.01									0.09	0.04				0.48 0.0	2400 EDT	
POTOMAC 4N COHEN		0.02			0.02						0.12	0.39				0.08											0.07					0.72 0.0	2100 EST	
OLNEY 1 S GIANNOLA		0.01			T						0.06	>	0.13			0.38		0.01									0.12					0.74 0.0	2400 EDT	
MONTGOMERY VILLAGE ROTH 1SW	0.02				0.01						0.18	0.13				0.17											0.14					0.65 0.0	2400 EDT	
GLENMONT 1NNE ROSSEN					T					T	0.03	0.14	0.09			0.35		T									0.11					0.72 0.0	2400 EST	
BETHESDA SCAFIDE		0.02										0.34	0.02			0.35											0.09					0.82 -	2400 EDT	
GAITHERSBURG 2WNW SHAW		T			T						0.15	T	0.26			0.15											0.22					0.78 0.0	2400 EDT	
FOREST GLEN TERRY		0.02			0.01						0.02	0.50	0.08			0.56		T									0.31					1.50 0.0	2400 EDT	
ROCKVILLE 1NE WASH GAS LIGHT					T					T	0.08	0.17	0.11			0.16		T									0.05					0.57 0.0	2400 EDT	
OXON HILL SMITH					0.18					T	T	0.57	T			0.30		T									0.04					1.09 0.0	2300 EDT	
HOLLYWOOD ABELL		0.10	T		0.63	0.01				T		T	0.44			0.88	0.01	T									0.01					2.08 0.0	2359 EDT	
RIDGE ZYLA		0.55	0.02		0.51					T	T		0.36			0.30		0.02															1.76 0.0	2400 EDT
SMITHSBURG 1.5 SW HUTTO	0.01	0.01									0.76		0.13	0.01		0.62		T			0.03					0.26	0.01	0.05	0.01			1.90 0.0	2400 EDT	
HAGERSTOWN 1E KEEFER	0.01	0.02									0.44		0.07	0.02		0.57		T								0.03	0.11					1.27 0.0	2400 EDT	
SMITHSBURG 2 NE VAUGHN											0.67		0.17	0.03		0.60		0.04	0.01	0.04							0.39	0.02				1.97 0.0	2400 EDT	
SALISBURY NWS WICOMICO CO APT		0.03			0.15				0.01	0.01		T	0.41			0.30	0.01	0.01	0.01										T	0.03		0.97 0.0	2400 EST	
WASH NATIONAL NWS ASOS		T			0.04						T	0.93	T			0.48		T		T							0.30					1.75 0.0	2400 EST	
WASH DULLES NWS ASOS		T			0.04					0.01	T	0.12	T			0.05		0.01		0.01								0.10	T			0.34 0.0	2400 EST	
STERLING 4 N SHAFFER		0.02			0.04						0.09	0.04	0.10			0.14		0.06		0.01							0.11	T				0.61 0.0	2400 EDT	
DAVIS 3 SE WV LESHER	0.13	0.08				0.18							0.09				0.96	0.48	1.11	0.03	T		0.01	T	0.02							3.09 T	0700 EDT	