



<http://www.jhuapl.edu/weather/education/ACONdata.html>

ATLANTIC COAST OBSERVER NETWORK, MD / DE / DC CHAPTER WITH DATA FROM NEARBY AREAS

TROPICAL STORM ERNESTO REMNANTS AND SEVERNA PARK TORNADO

September's weather was a welcome relief from the heat, humidity, and dryness of August. The cool temperatures resulted from the considerable cloud cover which held down maximum temperatures and held up the minimum temperatures. There were no 90 degree temperatures and a below average number of days with 80+ temperatures. **Gary Gallaher** of **Bear 2 SW DE** reported 5 days with temperatures 80 or above, the fewest number of days in 41 years of records.

The month began on a cool, wet note. The remnants of Tropical Storm Ernesto, which made landfall in North Carolina, moved slowly northwards through central Maryland on the 2nd and was absorbed by a frontal system over Pennsylvania / New York during the next couple of days. The rain shield moved northwards ahead of the center of low pressure. The southeastern portions of Maryland / Delaware region received heavy, flooding rains. See page 2 for a picture of the flooding in St Mary's County. Four inch plus amounts reached as far north as Anne Arundel County Maryland and Sussex County Delaware. Gale force winds occurred near the coast as a result of the interaction between the remnants of Ernesto and a large high pressure system to the north. Below are the heavier amounts reported by ACON observers:

Jug Bay Wetlands	7.05"
Floyd Abell of Hollywood	6.96"
John Zyla of Ridge	6.00"
UofD Res Ctr Georgetown DE	4.57"
Dave Bryant of Annapolis 2N	4.33"
Jeff Stoudt of Laurel 2E	3.84"

NWS reported the following amounts:	
Salisbury Airport	6.88"
Georgetown DE Airport	4.51"

Generally two to three inches fell over the balance of the region. A picture of flooding in St Mary's county is on page 2.

One to two inches of rain fell on the 5th as a result of a stalled frontal system.

The longest streak of 80 degree days of the month occurred from the 7th to the 10th.

Rain returned on the 11th to areas west of I-95. The heaviest amounts fell in portions of Montgomery and Washington Counties. **Max Hutto** of **Smithsburg 1.5SW** reported 1.48" while **Greg Keefer** of **Hagerstown 1E** had 1.21" and **David Roth** of **Montgomery Village 1SW** had 1.03". The balance of the region west of I-95 corridor and east of the mountains received less than a half inch.

The last few days of summer brought temperatures as high as the low to mid 80's on the 17th and 18th and minimums as low as the upper 30's to the middle 40's on the 21st and 22nd. Extremes reported were **Joe Terry** of **Forest Glen** with 86 on the 18th and **Max Hutto** of **Smithsburg 1.5SW** with 38 on the 21st.

A strong cold front moved across the region on the 28th. Rainfall amounts ranged from less than a half inch to nearly two inches. Greg Klein of Westminster 5 SSE reported 1.87" while Ralph Hartsock of Westminster 4 SSE reported 1.85". A F1 tornado touched down in Severna Park. The report

EXTREMES REPORTED BY

ACON OBSERVERS

MAXIMUM TEMPERATURE

Jug Bay Wetland	87
Glenmont 1 NNE	87
Six Stations	86

MINIMUM TEMPERATURE

Davis 3 SE WV	35
Eagle Rockl	36
Frostburg	37

WARMEST AVG. TEMP.

Baltimore 2 SE	69.4
Ridge	68.5
Hollywood	68.1

COLDEST AVG. TEMP.

Davis 3 SE WV	54.6
Eagle Rock	57.8
Frostburg	58.6

MAXIMUM PRECIPITATION

Jug Bay Wetlands	11.63
Ridge	11.47
Hollywood	11.08

MINIMUM PRECIPITATION

LaVale	3.36
Eagle Rock	3.80
Davis 3 SE WV	3.96
Frostburg	4.31

issued by NWS Sterling is on page 2 along with a picture of the damage.

The balance of the month was cool. The coldest temperatures of the month occurred on the morning of the 30th. **Dave Leshner** of **Davis 3 SE WV** reported 35. Temperatures fell to 37 at Salisbury NWS

**PUBLIC INFORMATION STATEMENT
NATIONAL WEATHER SERVICE BALTIMORE MD/WASHINGTON DC
415 PM EDT FRI SEP 29 2006**

...A TORNADO TOUCHED DOWN IN CENTRAL MARYLAND THURSDAY EVENING...

THE NATIONAL WEATHER SERVICE CONDUCTED A STORM SURVEY IN SEVERNA PARK AND PASADENA MARYLAND TODAY. FROM THIS SURVEY... INTERVIEWS WITH EYEWITNESSES... NATIONAL WEATHER SERVICE SKYWARN SPOTTERS... AND DOPPLER RADAR IMAGERY... IT WAS DETERMINED THAT A TORNADO TOUCHED DOWN AROUND 6:30 PM IN CENTRAL MARYLAND IN THE AREA OF SEVERNA PARK... AND TRAVELED TWO MILES BEFORE LIFTING IN PASADENA MARYLAND AROUND 6:40 PM. AT ITS MAXIMUM THE STORM WAS 250 YARDS WIDE WITH WINDS OF 90 MPH WITH A RANKING OF F1 ON THE FUJITA SCALE WHICH RUNS FROM F0 TO F5. 33 HOMES WERE SEVERELY DAMAGED BY FALLING TREES WITH 13 OF THOSE HOMES RENDERED UNINHABITABLE.

INITIAL MINOR DAMAGE WAS LOCATED NEAR THE INTERSECTION OF RITCHIE HIGHWAY ROUTE 2 AND MCKINSEY AVENUE. A HARDWARE STORE HAD ITS SIGN BLOWN DOWN AND A SMALL TREE WAS DOWNED NEAR THE SEVERNA PARK MARKET-PLACE SHOPPING CENTER. A FEW TREES WERE ALSO DOWNED IMMEDIATELY BEHIND THE SHOPPING CENTER ALONG LEELYNN ROAD.

THE TORNADO GATHERED STRENGTH AS IT PROGRESSED THROUGH WEST RIDGE AND TOWARDS CATTAIL CREEK OFF OF THE MAGOTHY RIVER. FIVE LARGE HARDWOOD TREES OF ONE TO TWO FEET IN DIAMETER WERE UPROOTED... AND SEVERAL OTHERS WERE SNAPPED OFF ALONG WHITTIER PARKWAY. TWO OF THE LARGE TREES HAD FALLEN THROUGH HOUSES. THESE TREES... AS MOST OF THE TREES WERE IN THE SURVEY... WERE BLOWN DOWN NEARLY PERPENDICULAR TO THE PATH OF THE TORNADO... KNOCKED DOWN TOWARDS THE WEST.

THE TORNADO THEN PASSED OVER A NORTHWEST EXTENSION OF THE MAGOTHY RIVER CALLED CATTAIL CREEK... AND REACHED ITS MOST INTENSE AND WIDEST EXTENT AS IT PASSED THROUGH THE COMMUNITY OF LOWER MAGOTHY BEACH. IN THIS AREA WINDS WERE ESTIMATED TO HAVE REACHED 90 MPH. AT ITS MAXIMUM THE STORM PASSED THROUGH A VACANT LOT BETWEEN NORTH DRIVE AND SOUTH DRIVE. IN THAT AREA NEARLY EVERY TREE WAS UPROOTED OR SNAPPED OFF AND BLOWN DOWN TO THE WEST. MANY OF THESE TREES WERE LARGE TWO FOOT DIAMETER HARDWOOD TREES THAT WERE 60 TO 80 FEET TALL. IT WAS EVEN NOTED THAT A SMALL SHRUB OF THREE FEET TALL WAS UPROOTED... AN INDICATION THAT THE CIRCULATION REACHED ALL THE WAY TO THE SURFACE. LEAF SPATTER WAS NOTED ON THE SIDES OF HOMES AND VEHICLES. SLIGHT SIDING DAMAGE WAS NOTED ON ONE HOME. SEVERAL HOMES HAD DAMAGE FROM TREES OR LARGE TREE BRANCHES FALLING INTO THEM. MANY WIRES AND TELEPHONE POLES WERE KNOCKED DOWN IN THIS AREA. THE WIDTH OF THE TORNADO AT THIS POINT WAS 250 YARDS.

THE TORNADO THEN BEGAN TO WEAKEN AS IT PASSED JUST WEST OF HAMILTON HARBOR MARINA AND CROSSED OVER THE COMMUNITY OF STEWARTS LANDING BEFORE CROSSING OLD MAN CREEK INTO RIVERDALE. DURING THIS TIME MORE TREES WERE BEING SNAPPED OFF THEN UPROOTED AS THE TORNADO WAS BEGINNING TO LIFT OFF THE GROUND.

IN THE RIVERDALE AREA... A FEW TREES AND SEVERAL LARGE BRANCHES WERE DOWN. A SMALL GARAGE WAS DESTROYED BY A TREE. DAMAGE BECAME MUCH MORE LIMITED AS THE TORNADO CONTINUED NORTH ACROSS NORWITCH ROAD AND INVERNESS ROAD IN RIVERDALE. BY THE TIME THE STORM CROSSED THE MAGOTHY FOR THE FINAL TIME AND TRAVELED OVER THE COMMUNITY OF BEACHWOOD PARK... ONLY LEAF LITTER AND SMALL DOWNED BRANCHES WERE NOTED.



Photo as published in the September 2006 Storm Data

F1 Tornado damage at Severna Park, MD Sept 26, 2006. Image courtesy of Anne Arundel County Police, Officer Rich Herard.

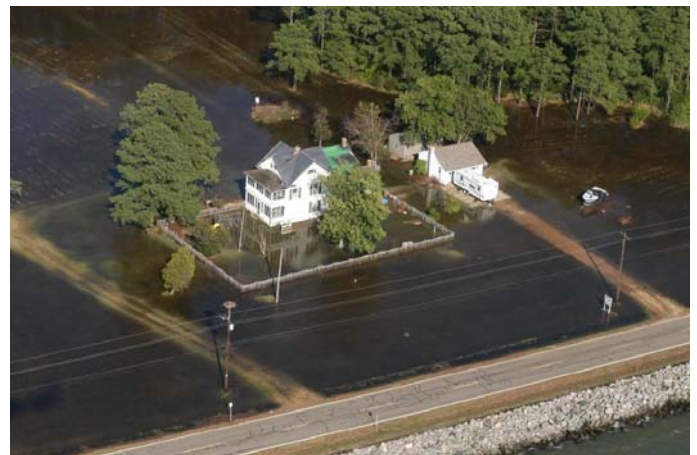


Photo as published in the September 2006 Storm Data

Flooding from the remnants of Tropical Storm Ernesto Image courtesy of St Mary's County Emergency Management

OBSERVER COMMENTS FOR SEPTEMBER 2006

Gary Gallaher of Bear 2 SW, DE

Third coolest September in 41 years of records. 5 days with maximum temperatures of 80 or higher was the fewest ever for September. Tropical Storm Ernesto brought the first beneficial rains since mid July on the 1st and 2nd. Its winds and driving rain stripped many leaves and blossoms from my pole beans which ended any future bean development..

Nate Mullins of LaVale

Due to ample cloud cover, the below normal daily max's were nearly offset by above normal nightly mins.

2nd - Rain, heavy at times continued overnight and tapered to drizzle by 8 AM. Total rain from Ernesto 2.20".

17th & 18th - Dense AM fog.

Dave Bryant of Annapolis 2 N

28th - Brief violent downburst 5-6 PM, estimated 40 - 50 knot gusts for 4 to 5 minutes.

Jeff Stoudt of Laurel 2 E

The hot and dry August turned cool and rainy immediately at the onset of September as moisture from TS Ernesto overran a wedge of cool air. The event brought 3.84" of rain.

28th - Thunderstorm during early evening turned severe nearby to the east and even tornadic at Severna Park.

Karyn Molines of Jug Bay Wetlands

Tropical storm Ernesto dumped 7.14" of rain.

Al Kreinik of Parkton 5 SW

14th - Rain early AM till early afternoon.

Marty Sharrow of Owings Mills

8th - Hazy sun with few clouds and warm.

25th - Sunny and much more comfortable.

Joe Manfre of Baltimore 2SE

5th - Cloudy, cool, occasional rain.

18th - Partly cloudy, warm, moderate humidity.

Ralph Hartsock of Westminster 4 SSE

28th - Severe PM storm pea size hail and marble size hail.

Bobby Miller of Millers 4 NE

9th - AM fog then sunny day.

16th - Periods of drizzle, very little sun.

Marty Brumback of Bryans Road 2 ESE

15th - Unusual system. Rain moved from the east to west due to an upper level low.

Rebecca Harvey of Eagle Rock

6th - Thunder

Rich Giannola of JHU/APL

1st - Peak wind gust from Ernesto was 42 MPH @ 9:13 PM.

Rob Cohen of Potomac 4 N

1st - Tropical Storm Ernesto brought mid afternoon temperatures in the low 60's and windy conditions.

28th - Moderate thunderstorm 6 to 7 PM.

Rich Giannola of Olney 1 S

1st—2nd - Rain began before 6 AM on the 1st from remnants of TS Ernesto. Windy afternoon. Power was out from 10:25—11:10 PM. Rain continued overnight into the second. Precipitation ended late in the afternoon of the 2nd.

Kevin Shaw of Gaithersburg 2 WNW

All in all a very interesting transitional month. A wet, cool month. The cool temperatures were almost entirely due to low maximum temperatures rather than low minimum temperatures.

28th - Daily rainfall record set with 1.79".

Joe Terry of Forest Glen

Very wet after an extremely dry August. Considerably cooler than August.

1st - Very cool and windy with continuous rain, occasionally heavy and slowly falling temperatures.

28th - First thunderstorm since August 7. Early evening thunderstorms with brief very heavy rain. Sky grew almost as dark as night one hour prior to sunset.

Brian Smith of Oxon Hill

28th - +TSRA 1714-1730, 1805-1930 otherwise -SHRA/SHRA 1630-2300

Floyd Abell of Hollywood

Second wettest September, 11.08" of rain fell.

1st & 2nd - Rain and wind from Tropical Storm Ernesto. Peak wind on the 1st 53 mph and 41 mph on the 2nd. 6.96" of rain fell.

28th - Fair then evening thunderstorm.

John Zyla of Ridge

6.00" of rain from Ernesto (August 31 - Sept 2). Second highest monthly precipitation, 11.47". Wettest month was September 1999 when 12.90" fell.

Max Hutto of Smithsburg 1.5 SW

11th - Overnight moderate to heavy rain, much cooler, rainy most of the day.

28th - PM thunderstorm, nearby were intense.

Greg Keefer of Hagerstown 1 E

1st & 2nd - Total rainfall from Ernesto 2.30". Winds gusted to 31 mph on the 1st and 39 mph on the 2nd.

9th & 10th - Each day dense fog overnight and in the morning

11th - Rain overnight moderate to heavy at times. Chilly with light rain and drizzle most of the day. 1.21" fell.

28th - Severe thunderstorms across the area with damaging winds in some places. Intense thunderstorm here between 4:30—5:30 PM. Ominous storm skies with wind gusts to 46 MPH, frequent sharp lightning.

Jim Vaughn of Smithsburg 2 NE

Fifth coldest September.

1st & 2nd - Remnants of Ernesto peak wind of 49 mph on the 1st and 44 mph on the 2nd. 2.71" of rain fell.

Compiled by Gary Gallaher, MD/DE ACON Data Collector and Report Writer, from data received from dedicated observers. Without your observations each month this report will not be possible.

**ACON MD / DE / DC
SEPTEMBER 2006 SUMMARY**

OBSERVER	STATION <i>COUNTY, STATE</i>	TEMPERATURE									PEAK WIND			PRECIPITATION					SNOWFALL				OBS TIME			
		AVG MAX	AVG MIN	MEAN	MAX	DAY	MIN	DAY	MAX >=90	MAX <=32	MIN <=32	GUST	DIR	DAY	TOTAL	MAX DAY	DATE	YEAR	DAYS >=.01"	DAYS >=1"	TOTAL	MAX DAY		DATE	SEA- SON	
<i>New Castle, Delaware</i>																										
Gallagher, Gary	Bear 2 SW	74.3	55.0	64.7	84	18	40	30	0	0	0	43	NE+	1+	6.95	1.57	5	35.30	12	3	0.0	0.0	0.0	2400		
Gallagher, Steve	North St. Georges	75.8	58.0	66.9	86	9	44	30	0	0	0				7.22	2.17	1-2	36.43	8	3	0.0	0.0	0.0	2200		
NWS Wilmington	New Castle Co. Apt.	74.0	57.0	65.5	82	9	43	30	0	0	0	49	NE+	1	6.18	1.89	5	37.61	10	3	0.0	0.0	0.0	2400		
U of DE DEOS	UofD AG Farm Newark, DE	74.9	56.2	65.6	85	9+	42	30	0	0	0	24		1	7.45	2.11	5	34.91	16	3				2400		
U of D Townsend Farm	Townsend 4 W	<u>73.5</u>	<u>54.5</u>	<u>64.0</u>	<u>83</u>	<u>18</u>	<u>42</u>	30	0	0	0	36		28	<u>1.83</u>	<u>1.49</u>	<u>28</u>	<u>32.82</u>	<u>5</u>	<u>1</u>				2400		
<i>Sussex, Delaware</i>																										
NWS Georgetown	Sussex Co. Airport	75.3	57.1	66.2	84	24	42	30	0	0	0	51	NE	1	7.10	4.31	1	34.28	10	2				2400		
U of D Research & Ed Ctr	Georgetown	75.6	56.7	66.2	84	9+	41	30	0	0	0				6.52	4.23	1	33.69	10	2				2400		
U of D Warrington Farm	Harbeson 8 S	74.3	55.8	65.1	83	18+	40	30	0	0	0				6.24	4.02	1	27.04	12	2				2400		
<i>Allegany, Maryland</i>																										
Latta, Greg	Frostburg	66.5	50.6	58.6	80	19	37	30	0	0	0				4.31	2.45	2	27.15	18	1	0.0	0.0	0.0	0700		
Mullins, Nate**	LaVale	70.9	54.6	62.8	82	4+	45	21+	0	0	0				3.36	1.20	2	24.10	14	2	0.0	0.0	0.0	2400		
<i>Anne Arundel, Maryland</i>																										
Bryant, Dave	Annapolis 2 N	75.5	63.2	69.4	83	24	51	30	0	0	0				8.68	4.33	1-2	36.74	7	3	0.0	0.0	0.0	2400		
Hanson, Dan	Millersville 1 SE	Station closed 3/31/2006																								2400
Hanson, Dan	Pasadena 3 SW	76.0	56.8	66.4	86	9	42	30	0	0	0	40	N	1	8.43	2.31	1		12	5	0.0	0.0	0.0	2400		
Jug Bay Wetlands	Lothian	77.0	57.3	67.2	87	19	41	30	0	0	0				11.63	6.70	2	38.36	20	2	0.0	0.0	0.0	0900		
NWS Baltimore	BWI Airport	74.2	56.7	65.5	84	9	42	30	0	0	0	43	NE	1	7.56	2.16	1	29.37	10	4	0.0	0.0	0.0	2400		
Stoudt, Jeff	Laurel 2 E	74.4	58.3	66.4	85	18	45	30	0	0	0				7.70	2.24	1	34.35	11	3	0.0	0.0	0.0	2400		
<i>Baltimore, Maryland</i>																										
Kreinik, Al	Parkton 5 SW	71.5	52.8	62.2	82	9+	38	22	0	0	0				6.63	2.28	2	32.53	11	3	0.0	0.0	0.0	2200		
Sharrow, Marty	Owings Mills 2 SE	72.4	55.5	64.0	83	9	42	30	0	0	0				5.66	1.03	1	31.46	10	2	0.0	0.0	0.0	2400		
<i>Baltimore City, Maryland</i>																										
Manfre, Joe	Baltimore 2 SE	76.2	62.2	69.2	86	9	52	30	0	0	0				7.04	1.90	5	28.74	10	4	0.0	0.0	0.0	1800		
Maryland Science Ctr	Baltimore Inner Harbor	75.8	62.0	68.9	85	9+	52	21+	0	0	0				5.89	2.04	5	28.35	12	2				2400		
<i>Carroll, Maryland</i>																										
Close Jr, Herb	Manchester 1 SW	71.9	56.1	64.0	84	9	41	21	0	0	0				5.77	1.23	2	29.45	14	4	0.0	0.0	0.0	2300		
Hartsock, Ralph	Westminster 4 SSE	73.1	54.3	63.7	83	18	40	30	0	0	0				6.70	1.85	28	<u>37.14</u>	14	3	0.0	0.0	0.0	2000		
Klein, Greg	Westminster 5 SSE	69.6	54.6	62.1	79	9	43	30	0	0	0				6.82	1.87	28	37.29	12	3	0.0	0.0	0.0	2200		
Miller, Bobby	Millers 4 NE	71.6	53.6	62.6	81	9+	39	30	0	0	0	38	NE	1	5.39	1.52	2	30.91	13	2	0.0	0.0	0.0	1800		
Muller, Ray	Westminster City	73.0	56.8	64.9	83	18	44	30	0	0	0				5.91	1.44	5	34.93	12	3	0.0	0.0	0.0	1900		
<i>Charles, Maryland</i>																										
Brumback, Marty	Bryans Head 2 ESE	75.8	57.9	66.9	86	9	44	30	0	0	0				7.18	2.27	1	<u>12.73</u>	13	4	0.0	0.0	0.0	2400		
<i>Frederick, Maryland</i>																										
Lawrence, Bryon	Frederick 3 WNW																	21.70						2300		
<i>Garrett, Maryland</i>																										
Harvey, Rebecca	Eagle Rock	65.7	49.8	57.8	80	19	36	30	0	0	0				3.80	1.60	2	31.87	14	1	0.0	0.0	0.0	0800		
<i>Harford, Maryland</i>																										
Albright, Lynn	Fallston 2 NW																							2400		

**ACON MD / DE / DC
SEPTEMBER 2006 SUMMARY**

OBSERVER	STATION <i>COUNTY, STATE</i>	TEMPERATURE									PEAK WIND			PRECIPITATION					SNOWFALL				OBS TIME	
		AVG MAX	AVG MIN	MEAN	MAX	DAY	MIN	DAY	MAX >=90	MAX <=32	MIN <=32	GUST	DIR	DAY	TOTAL	MAX DAY	DATE	YEAR	DAYS >=.01"	DAYS >=1"	TOTAL	MAX DAY		DATE
<i>Howard, Maryland</i>																								
Giannola, Rich	Laurel JHU / APL	74.0	58.1	66.1	85	18	44	30	0	0	0	42	NE	1	5.97	1.48	5	29.94	12	3	0.0	0.0	0.0	2400
<i>Montgomery, Maryland</i>																								
Cohen, Rob	Potomac 4 N	73.7	57.4	65.6	85	18	44	30	0	0	0				6.45	1.65	5	33.53	13	3	0.0	0.0	0.0	2100
Giannola, Rich	Olney 1 S	72.0	57.0	64.5	83	18	45	30	0	0	0				5.94	2.28	1-2	32.92	12	3	0.0	0.0	0.0	2400
Roth, David	Montgomery Village 1SW	73.5	57.5	65.5	84	9+	45	30	0	0	0	14		28	5.76	1.23	5	33.31	13	3	0.0	0.0	0.0	2400
Rossen, Stan	Glenmont 1 NNE	74.7	56.3	65.5	87	18	43	30	0	0	0				5.83	1.76	1	33.68	11	3	0.0	0.0	0.0	2400
Scafide, Tony	Bethesda	71.8	57.2	64.5	81	9	45	21+	0	0	0				4.56	1.46	1	28.77	11	2				2400
Shaw, Kevin	Gaithersburg 2 WNW	71.4	55.2	63.3	80	8+	42	30	0	0	0				7.60	1.79	28	38.67	13	3	0.0	0.0	0.0	2400
Terry, Joe	Forest Glen	75.6	56.8	66.2	86	9+	43	21+	0	0	0				6.44	2.03	1	33.99	12	3	0.0	0.0	0.0	2400
Wash Gas Light	Rockville 1 NE	72.8	58.3	65.6	84	18	44	30	0	0	0				4.97	1.37	1	29.96	13	2	0.0	0.0	0.0	2400
<i>Prince Georges, Maryland</i>																								
Smith, Brian	Oxon Hill	75.4	59.8	67.6	85	9	46	30	0	0	0				7.54	2.20	1	37.82	9	3	0.0	0.0	0.0	2300
<i>St. Marys, Maryland</i>																								
Abell, Floyd	Hollywood	76.4	59.7	68.1	86	18	47	30	0	0	0	53		1	11.08	6.55	1	36.19	12	2	0.0	0.0	0.0	2400
Zyla, John	Ridge	75.5	61.4	68.5	85	24	50	21	0	0	0	40	NE	1	11.47	5.49	1	38.83	13	4	0.0	0.0	0.0	2400
<i>Washington, Maryland</i>																								
Hutto, Max	Smithsburg 1.5 SW	72.2	53.5	62.9	83	18	38	21	0	0	0	29	WNW	20	6.07	1.48	11	33.28	15	2	0.0	0.0	0.0	2400
Keefer, Greg	Hagerstown 1 E	72.7	55.2	64.0	83	9	41	21	0	0	0	46	WNW	28	5.71	1.42	2	31.33	13	2	0.0	0.0	0.0	2400
Vaughn, Jim	Smithsburg 2 NE	74.4	54.9	64.7	85	9+	41	21	0	0	0	53	W	28	5.34	1.70	2	34.73	13	3	0.0	0.0	0.0	2400
<i>Wicomico, Maryland</i>																								
NWS Salisbury	Wicomico Co. Apt	75.5	54.0	64.8	85	24	37	30	0	0	0	62	ENE	1	9.27	6.80	1	33.56	12	1	0.0	0.0	0.0	2400
<i>Arlington, Virginia</i>																								
NWS Washington Nationa	National Airport	74.9	60.7	67.8	85	9	50	21+	0	0	0	47	WNW	28	6.31	2.18	1	35.99	8	3	0.0	0.0	0.0	2400
<i>Loudon, Virginia</i>																								
NWS Washington Dulles	Dulles Airport	74.6	56.6	65.6	84	9+	43	21+	0	0	0	37	NNE+	1+	7.12	2.76	1	34.11	11	2	0.0	0.0	0.0	2400
Shaffer, Lance	Sterling 4 N	73.6	58.4	66.0	84	17	46	21+	0	0	0				6.88	2.71	1	34.20	16	2	0.0	0.0	0.0	2400
<i>Tucker, West Virginia</i>																								
Leshner, Dave	Davis 3 SE WV	61.6	47.5	54.6	74	19	35	30	0	0	0				3.96	1.12		44.13	17	1	0.0	0.0	0.0	0700
SECTION AVERAGE*		73.6	56.7	65.2											6.63						0.0			

NOTES:

M OR UNDERLINE = MISSING DATA

> = INCLUDED IN NEXT DAYS DATA

ITALIC = ESTIMATED DATA

*SECTIONAL AVERAGE DOES NOT INCLUDE DATA FROM WEST VIRGINIA.

**OBSERVERS FOR LAVALLE ARE DAVID DREWERY AND CHARLES ORLICK. DATA COMPILED BY NATE MULLINS.

National Weather Service station data listed herein is preliminary and may be subject to change. The data has not been certified and cannot be used in legal actions. Only reports certified by the National Climatic Data Center in Asheville, NC may be used for these purposes. Accuracy of Data from ACON Observers not guaranteed.

GARY GALLAHER 1/14/07

ACON MD / DE / DC
SEPTEMBER 2006 DAILY TEMPERATURES

STATION	1	2	3	4	5	6	7	8	9	10	11	12	13	14	15	16	17	18	19	20	21	22	23	24	25	26	27	28	29	30	31	AVG	OBS TIME
BEAR 2 SW, DE GALLAHER	67 59	71 60	75 58	79 60	67 61	77 59	81 55	81 56	83 59	79 59	70 53	70 48	70 52	69 64	74 65	76 63	81 58	84 57	76 57	69 53	69 43	72 43	79 62	79 62	74 52	75 46	74 49	77 52	65 45	65 40	74.3 55.0	2400 EDT	
NORTH ST. GEORGES, DE GALLAHER	67 61	73 62	76 59	80 62	65 61	80 61	82 58	84 59	86 86	82 62	72 55	72 71	75 70	76 66	78 65	83 61	85 61	78 62	71 56	70 48	74 47	80 60	82 64	74 57	77 52	76 53	76 55	66 48	68 44	75.8 58.0	2200 EDT		
WILMINGTON, DE NWS NEW CASTLE CO APT	67 60	72 62	74 59	79 62	68 61	76 60	80 57	80 59	82 63	80 62	69 53	70 51	69 56	69 65	75 65	78 63	81 60	81 59	75 59	70 53	69 47	71 47	79 63	79 63	73 55	74 49	73 50	74 57	76 47	66 43	74.0 57.0	2400 EST	
NEWARK AG FARM, DE U OF DE DEOS	67 59	71 59	76 59	79 62	67 61	77 60	82 56	84 58	85 61	80 60	72 56	71 51	69 53	70 64	74 65	77 64	82 59	85 58	77 52	69 46	69 45	72 62	80 62	81 62	74 54	75 49	76 50	77 53	66 47	65 42	74.9 56.2	2400 EST	
TOWNSEND 4 W, DE U of D DE Townsend Farm	M M	M M	M M	M M	M M	M M	M M	M M	M M	82 64	78 59	69 52	69 48	70 52	70 64	75 65	75 63	79 58	83 57	77 60	68 53	67 44	71 61	78 63	80 52	72 49	73 48	74 56	78 45	65 42	73.5 54.5	2400 EST	
GEORGETOWN, DE NWS SUSSEX CO APT	69 64	71 61	74 57	81 63	70 63	76 62	80 58	80 60	82 59	77 61	70 54	69 50	73 50	70 65	79 66	81 61	83 60	82 66	71 54	69 49	72 45	81 63	84 68	74 55	75 49	75 50	79 52	67 46	71 42	75.3 57.1	2400 EST		
GEORGETOWN, DE UofD RESEARCH & ED CTR	69 65	70 61	73 58	80 63	71 62	78 62	80 57	82 60	84 58	77 59	69 54	69 50	73 50	71 65	78 62	81 58	84 59	81 66	71 53	69 48	73 44	80 62	84 69	75 54	77 49	77 48	79 52	68 46	71 41	75.6 56.7	2400 EST		
HARBESON 8 S, DE UofD WARRINGTON FARM	69 64	71 61	75 56	79 62	71 61	76 56	78 58	79 57	81 58	75 54	68 50	67 48	72 48	69 64	77 66	72 60	79 58	83 57	82 64	69 54	66 47	72 43	80 62	83 67	74 54	76 48	74 47	78 49	66 45	70 40	74.3 55.8	2400 EST	
FROSTBURG LATTA	64 55	55 51	59 52	64 50	75 50	63 56	70 51	74 51	73 54	76 53	76 53	57 54	55 53	59 55	68 56	66 57	68 52	77 52	80 48	69 41	56 41	64 45	63 45	76 59	69 54	65 46	67 47	69 47	65 45	54 37	66.5 50.6	0700 EDT	
LAVALE MULLINS**	64 59	65 55	62 59	82 53	67 60	74 55	80 56	80 56	80 54	80 56	80 58	67 59	64 57	63 58	75 57	72 61	75 59	82 55	75 62	65 54	65 46	66 59	76 60	76 50	69 46	74 45	72 48	57 48	63 48	65 46	70.9 54.6	2400 EDT	
ANNAPOLIS 2 N BRYANT	71 63	69 61	77 64	78 67	71 64	76 64	81 64	80 66	82 69	80 66	74 66	74 63	69 64	70 66	72 66	74 66	82 65	82 66	79 68	72 60	71 54	73 67	80 72	83 63	77 60	75 59	76 60	78 56	68 51	70 51	75.5 63.2	2400 EDT	
PASADENA 3 SW HANSON	67 62	70 60	77 59	83 61	68 63	77 62	82 59	83 62	86 60	82 60	70 57	72 63	69 60	69 63	72 64	76 59	85 58	85 58	80 54	72 44	72 45	81 64	83 66	77 53	78 49	77 50	78 54	68 46	67 42	76.0 56.8	2400 EDT		
LOTHIAN JUG BAY	74 63	68 61	69 58	77 62	80 64	68 61	80 59	83 59	83 62	86 59	M	83 58	72 64	70 63	70 63	73 57	74 64	84 58	87 65	82 54	72 43	72 45	73 58	81 68	86 54	80 47	80 50	79 54	79 52	67 41	77.0 57.3	0900 EDT	
BALTIMORE NWS BWI APT	67 60	68 59	76 60	81 63	66 62	76 61	81 58	81 59	84 62	80 60	68 61	69 57	67 56	68 61	72 59	76 63	82 58	83 59	78 52	68 46	68 46	70 64	80 62	82 54	74 48	76 51	76 53	78 46	66 42	74.2 56.7	2400 EST		
LAUREL 2 E STOUDT	66 59	68 59	76 60	78 62	67 62	76 59	81 62	83 61	83 63	81 61	68 59	70 62	68 60	68 62	72 64	75 60	85 60	78 64	68 54	70 48	71 48	80 64	82 66	74 54	75 54	78 58	79 56	65 48	67 45	74.4 58.3	2400 EST		
PARKTON 5SW KREINIK	63 56	66 54	73 53	78 56	65 59	75 57	79 51	79 53	82 54	79 56	65 57	65 53	63 50	64 58	66 58	72 61	80 56	82 54	78 56	65 40	66 38	68 58	78 63	77 53	73 44	72 45	74 50	76 47	62 40	60 40	71.5 52.8	2200 EDT	
OWINGS MILLS 2SE SHARROW	65 56	67 55	73 56	78 59	68 59	73 59	79 55	81 58	83 60	81 60	69 56	67 54	65 59	66 56	69 59	71 62	77 58	82 58	75 63	66 53	66 45	68 45	77 60	79 63	71 52	73 48	74 51	75 49	61 42	72 42	72.4 55.5	2400 EDT	
BALTIMORE 2SE MANFRE	69 62	72 63	79 64	82 67	69 63	77 64	82 64	83 67	86 68	82 67	69 62	69 62	69 61	69 62	78 64	84 68	85 65	81 66	70 66	71 57	73 52	81 66	85 67	76 61	77 57	78 61	79 57	68 55	67 52	76.2 62.2	1800 EDT		
BALT INNER HARBOR MD SCIENCE CENTER	67 61	71 61	78 62	81 67	70 63	77 64	82 64	83 67	85 68	82 67	70 62	71 62	70 62	69 62	72 64	77 67	84 65	84 66	80 66	70 57	70 52	81 66	85 67	76 61	77 57	77 61	79 57	67 55	67 52	75.8 62.0	2400 EST		
MANCHESTER 1SW CLOSE	61 55	66 54	73 55	79 57	65 60	74 58	81 58	79 64	84 61	79 62	65 57	64 54	62 55	65 58	70 59	82 62	81 58	76 59	76 60	67 50	68 51	68 51	77 60	76 64	72 55	74 51	76 53	64 48	62 46	71.9 56.1	2300 EDT		
WESTMINSTER 4 SSE HARTSOCK	69 57	68 54	75 54	78 57	74 60	73 58	78 54	82 55	81 57	80 57	69 57	69 56	65 54	68 58	73 56	73 63	76 56	83 55	78 61	66 52	67 42	68 43	81 58	82 65	70 52	72 47	74 52	76 48	62 40	63 40	73.1 54.3	2000 EDT	
WESTMINSTER 5 SSE KLEIN	63 54	65 52	71 53	75 56	63 57	70 56	75 58	77 58	79 58	77 60	64 56	65 54	63 56	65 56	71 60	75 58	78 58	74 61	66 53	66 44	67 48	77 56	77 64	67 53	71 51	72 54	73 52	59 47	59 43	69.6 54.6	2200 EDT		
MILLERS 4NE MILLER	67 56	66 53	71 54	77 57	72 57	74 52	77 56	77 55	81 57	79 56	74 54	65 50	62 57	64 58	66 60	71 56	79 56	81 60	77 60	73 53	64 41	67 43	77 57	77 66	71 53	71 47	73 49	74 52	63 39	60 39	71.6 53.6	1800 EDT	
WESTMINSTER CITY MULLER	70 58	67 55	73 56	79 60	69 61	74 53	80 56	80 60	82 61	79 60	72 58	67 59	66 58	67 59	72 60	72 64	79 57	83 60	77 65	66 46	67 48	68 61	76 66	80 50	74 56	75 55	76 49	75 44	63 44	62 44	73.0 56.8	1900 EDT	
BRYANS ROAD 2 ESE BRUMBACK	66 61	72 59	81 59	78 63	66 62	79 61	83 58	84 61	86 62	85 61	68 62	68 60	68 58	75 61	70 59	84 64	85 59	79 63	70 51	71 46	71 47	79 64	84 67	78 56	78 51	77 51	79 56	68 50	70 44	75.8 57.9	2400 EDT		

ACON MD / DE / DC
SEPTEMBER 2006 DAILY TEMPERATURES

STATION	1	2	3	4	5	6	7	8	9	10	11	12	13	14	15	16	17	18	19	20	21	22	23	24	25	26	27	28	29	30	31	AVG	OBS TIME	
FREDERICK 3 WNW LAWRENCE																																		2300 EDT
EAGLE ROCK HARVEY	60	50	58	60	70	64	70	74	74	74	76	60	58	60	66	69	66	78	80	66	50	66	66	78	70	62	65	70	60	50		65.7 49.8	0800 EDT	
FALLSTON 2 NW ALBRIGHT																																		2400 EDT
LAUREL JHU / APL GIANNOLA	66	69	77	78	67	76	82	82	83	81	67	69	68	68	71	73	83	85	78	66	69	69	80	82	74	75	76	77	64	66		74.0 58.1	2400 EDT	
POTOMAC 4N COHEN	68	65	74	75	67	75	81	83	83	82	72	69	65	67	71	70	82	85	76	66	69	68	80	79	76	76	79	79	63	65		73.7 57.4	2100 EDT	
OLNEY 1 S GIANNOLA	66	66	74	76	66	73	78	81	82	80	70	66	65	65	70	70	79	83	76	65	67	68	>	80	74	73	74	76	63	62		72.0 57.0	2400 EDT	
MONTGOMERY VILLAGE ROTH 1SW	68	66	76	78	67	75	80	82	84	81	70	67	67	67	73	71	80	84	76	66	68	69	81	82	73	74	75	78	64	64		73.5 57.5	2400 EDT	
GLENMONT 1NNE ROSSEN	66	68	77	78	65	77	81	85	82	81	67	71	66	68	71	71	84	87	78	68	70	71	80	83	77	78	79	81	67	65		74.7 56.3	2400 EST	
BETHESDA SCAFIDE	66	67	74	75	M	M	78	79	81	79	68	66	65	66	72	72	78	80	76	65	65	67	78	80	72	71	72	75	62	63		71.8 57.2	2400 EDT	
GAITHERSBURG 2WNW SHAW	65	65	72	75	65	71	75	80	80	80	69	67	65	67	72	70	77	80	75	65	66	67	79	80	71	72	73	77	61	61		71.4 55.2	2400 EDT	
FOREST GLEN TERRY	66	69	79	81	66	78	83	84	86	84	68	72	67	68	74	74	84	86	79	70	71	71	81	83	77	78	77	78	68	67		75.6 56.8	2400 EDT	
ROCKVILLE 1NE WASH GAS LIGHT	65	66	78	77	66	79	79	83	82	80	65	67	67	66	73	70	80	84	76	64	66	70	80	80	72	72	75	76	62	64		72.8 58.3	2400 EST	
OXON HILL SMITH	69	69	78	78	67	79	83	83	85	82	69	71	69	69	75	72	83	84	79	69	71	70	81	83	77	75	76	78	67	70		75.4 59.8	2300 EST	
HOLLYWOOD ABELL	67	72	77	78	68	80	83	83	85	82	71	73	71	72	73	71	84	86	80	71	71	73	82	85	77	78	78	80	68	72		76.4 59.7	2359 EDT	
RIDGE ZYLA	67	72	74	74	73	79	80	81	82	81	70	72	71	71	71	74	79	84	78	73	68	73	82	85	76	75	76	81	69	73		75.5 61.4	2400 EDT	
SMITHSBURG 1.5 SW HUTTO	64	62	73	78	69	74	80	82	82	81	66	67	63	73	75	73	79	83	76	63	66	68	79	75	72	72	74	73	62	62		72.2 53.5	2400 EDT	
HAGERSTOWN 1E KEEFER	65	63	74	79	70	76	81	82	83	82	64	66	64	73	76	73	80	82	79	65	67	67	77	74	73	74	73	74	63	61		72.7 55.2	2400 EDT	
SMITHSBURG 2 NE VAUGHN	66	64	74	82	73	78	83	83	85	85	66	67	64	73	78	73	81	85	81	67	69	71	79	78	74	76	76	75	64	62		74.4 54.9	2400 EDT	
SALISBURY NWS WICOMICO CO APT	69	69	75	78	77	77	82	81	83	80	69	71	73	69	75	74	82	83	80	72	69	72	81	85	73	76	75	77	67	71		75.5 54.0	2400 EST	
WASH NATIONAL NWS ASOS	67	69	79	78	68	76	82	82	85	83	69	70	68	69	75	73	81	82	80	70	70	80	83	76	74	75	78	66	68		74.9 60.7	2400 EST		
WASH DULLES NWS ASOS	67	70	80	78	68	77	82	82	84	82	69	69	66	71	75	74	81	84	78	66	68	70	80	83	75	75	75	78	65	66		74.6 56.6	2400 EST	
STERLING 4 N SHAFFER	68	67	77	77	68	76	80	81	80	80	70	68	65	70	74	74	80	84	76	67	68	69	79	80	74	74	75	78	65	65		73.6 58.4	2400 EDT	
DAVIS 3 SE WV LESHER	59	50	53	54	62	61	65	68	68	69	69	68	66	58	60	60	63	71	74	62	45	59	62	74	63	58	59	64	58	47		61.6 47.5	0700 EDT	

ACON MD / DE / DC
SEPTEMBER 2006 DAILY PRECIPITATION

STATION	1	2	3	4	5	6	7	8	9	10	11	12	13	14	15	16	17	18	19	20	21	22	23	24	25	26	27	28	29	30	31	TOTAL	OBS TIME
BEAR 2 SW, DE GALLAHER	0.93	1.47	0.01	T	1.57				T				T	1.36	0.07	0.02			0.03			T	T	0.68				0.73	0.06	0.02		6.95 0.0	2400 EDT
NORTH ST GEORGES, DE GALLAHER	>	2.17			1.98									1.16	0.23	0.01	T	T						0.94				0.70		0.03		7.22 0.0	2200 EDT
WILMINGTON, DE NWS NEW CASTLE CO APT	0.64	1.10			1.89	T				T			T	1.24	0.19	T			0.03					0.32				0.71	0.03	0.03		6.18 0.0	2400 EST
NEWARK AG FARM, DE U OF DE DEOS	0.83	1.60	0.01		2.11									1.38	0.26	0.02	0.02	0.02	0.01	0.01				0.37	0.01			0.75	0.04	0.01		7.45 0.0	2400 EST
TOWNSEND 4 W, DE U of D DE Townsend Farm	M	M	M	M	M	M	M	M						M	M		0.01							0.17				1.49	0.15	0.01		1.83	2400 EST
GEORGETOWN, DE NWS SUSSEX CO APT	4.31	0.20	T	T	0.81								0.07	1.11	0.11	0.06			T					0.31	T			0.04	0.08			7.10 -	2400 EST
GEORGETOWN, DE UoD RESEARCH & ED CTR	4.23	0.34	0.01		0.73	0.01								1.06	0.03									0.01				0.02	0.08			6.52	2400 EST
HARBESON 8 S, DE UoD WARRINGTON FARM	4.02	0.24			0.43								0.08	1.07	0.05	0.17			0.04					0.01	0.01			0.01	0.11			6.24 0.0	2400 EST
FROSTBURG LATTA	T	2.45	0.15		0.13	0.22	0.16		0.01		0.08	0.06	0.15	0.24		0.10	T		0.06	0.01				0.22	0.01	0.08			0.17	0.01		4.31 0.0	0700 EDT
LAVALE MULLINS**	1.00	1.20	0.01		0.15	0.13				T	0.08	T	0.25		T	T		0.04	0.01					0.18	0.01			0.13	0.01	0.16		3.36 0.0	2400 EDT
ANNAPOLIS 2 N BRYANT	>	4.33			1.72			0.12					0.03	1.20	0.33													0.95				8.68 0.0	2400 EDT
PASADENA 3 SW HANSON	2.31	1.08			1.85	0.01					0.02			1.55	0.06	0.06								0.04				1.42	0.01	0.02		8.43 0.0	2400 EDT
LOTHIAN JUG BAY	0.35	6.70	0.09	0.01	1.30	0.49	0.02	T	T	T	M		0.02	0.46	0.86	0.07	0.28	0.02	0.01	0.04	T	T				0.01	0.01	0.01	0.87	0.01		11.63 0.0	0900 EDT
BWI NWS ASOS	2.16	1.47		T	1.78	T				T	0.03		T	0.91	0.10	0.01			T				T	0.03				1.03		0.04		7.56 0.0	2400 EST
LAUREL 2 E STOUDT	2.24	1.60		0.01	1.83	T					0.12		T	0.86	0.06	0.02			T				T	0.01				0.93	T	0.02		7.70 0.0	2400 EST
PARKTON 5SW KREINK	0.60	2.28	T		1.00			0.10			0.25		0.05	1.25	0.20	0.05			T					0.10				0.75	T			6.63 0.0	2200 EDT
OWINGS MILLS 2SE SHARROW	1.03	1.02		T	0.87					T	0.08			0.94	0.16	0.04			T				T	0.83				0.67		0.02		5.66 0.0	2400 EDT
BALTIMORE 2SE MANFRE	1.64	1.04		T	1.90						0.04		T	1.14	0.30	0.02							T	0.03				0.90		0.03		7.04 0.0	1800 EDT
BALT INNER HARBOR MD SCIENCE CENTER	1.44	0.82		0.01	2.04					0.01	0.05			0.45	0.16	0.01								0.04				0.83		0.03		5.89 -	2400 EST
MANCHESTER 1SW CLOSE	0.70	1.23	0.01		1.13	0.02					0.30		0.05	1.06	0.08	0.03			0.02				T	0.03				1.09		0.02		5.77 0.0	2300 EDT
WESTMINSTER 4 SSE HARTSOCK	0.41	1.64	0.03		1.06	0.01					0.47		0.05	0.98	0.04	0.04			0.02				T	0.06				1.85		0.04		6.70 0.0	2000 EDT
WESTMINSTER 5 SSE KLEIN	0.74	1.51			1.10					0.20	0.27		0.05	0.93	0.04	0.03								0.05				1.87		0.03		6.82 0.0	2200 EDT
MILLERS 4NE MILLER	0.13	1.52	0.03		0.76	T		0.14			0.39		0.05	1.08	0.24	0.05			T					0.03				0.20	0.77			5.39 0.0	1800 EDT
WESTMINSTER CITY MULLER	0.87	1.23			1.44	0.03					0.24		0.03	1.05	0.08	0.02			T			T	T	0.03				0.64	0.25	T		5.91 0.0	1900 EDT
BRYANS ROAD 2 ESE BRUMBACK	2.27	0.58		0.07	1.63								0.02	1.00	0.10	0.05	0.01							0.36				1.07	0.01	0.01		7.18 0.0	2400 EDT

ACON MD / DE / DC
SEPTEMBER 2006 DAILY PRECIPITATION

STATION	1	2	3	4	5	6	7	8	9	10	11	12	13	14	15	16	17	18	19	20	21	22	23	24	25	26	27	28	29	30	31	TOTAL	OBS TIME			
FREDERICK 3 WNW LAWRENCE																															0.00	2300 EDT				
EAGLE ROCK HARVEY	0.13	1.60	0.14	T	0.41	0.26					T	0.02	0.13	0.25		T			0.05												0.32	0.05	3.80	0800 EDT		
FALLSTON 2 NW ALBRIGHT																																		2400 EDT		
LAUREL JHU / APL GIANNOLA	1.34	1.12		0.02	1.48	0.01					0.15			0.91	0.10	0.01			T					0.03						0.77		0.03	5.97	2400 EDT		
POTOMAC 4N COHEN	1.50	1.05		0.04	1.65	0.01					0.31		0.01	0.94	0.10	T			T					T	0.04				0.68	0.07	0.05	6.45	2100 EDT			
OLNEY 1 S GIANNOLA	>	2.28		0.03	1.35	0.01					0.32		0.01	1.04	0.06	0.05								>	0.14				0.59		0.06	5.94	2400 EDT			
MONTGOMERY VILLAGE ROTH 1SW	1.10	0.38			1.23	0.01					1.03		0.04	0.73	0.16	0.02								0.01	0.14				0.84		0.07	5.76	2400 EDT			
GLENMONT 1NNE ROSSEN	1.76	0.49		0.01	1.32	T		T		T	0.22		0.01	0.88	0.01	T			T										1.06		0.03	5.83	2400 EST			
BETHESDA SCAFIDE	1.46	0.40	0.01	0.02	1.00						0.11		0.02	0.82	0.01														0.65		0.06	4.56	2400 EDT			
GAITHERSBURG 2WNW SHAW	1.71	0.52		0.03	1.46	0.03		T			0.99	T	0.02	0.65	0.20	0.02			T										T	0.12	T	1.79	T	0.06	7.60	2400 EDT
FOREST GLEN TERRY	2.03	0.62		0.01	1.58			T			0.08		0.01	0.85	0.01	0.01									0.01				1.22		0.01	6.44	2400 EDT			
ROCKVILLE 1NE WASH GAS LIGHT	1.37	0.30		0.04	1.32	0.01					0.34		0.02	0.84	0.14	0.01									0.04				0.47		0.07	4.97	2400 EDT			
OXON HILL SMITH	2.20	0.91		0.03	1.50						T		T	0.94	0.12	0.16			T										1.67		0.01	7.54	2300 EST			
HOLLYWOOD ABELL	6.55	0.41	0.02	0.41	1.31								0.02	0.92	0.12	0.05	T		T					0.16					0.95	0.16		11.08	2359 EDT			
RIDGE ZYLA	5.49	0.15		0.02	1.33								0.02	1.66		1.68			0.10										T	0.26	0.02	0.61	0.12	0.01	11.47	2400 EDT
SMITHSBURG 1.5 SW HUTTO	0.81	1.43		0.01	0.44	0.08	0.01			T	1.48		0.16	0.99	T		0.01								0.10	0.04			0.47	0.01	0.03	6.07	2400 EDT			
HAGERSTOWN 1E KEEFER	0.88	1.42			0.46	0.11			0.04	1.21		0.15	0.89	0.01	T				T					0.10	0.04			0.36		0.04	5.71	2400 EDT				
SMITHSBURG 2 NE VAUGHN	1.01	1.70	0.01		0.34	0.08			T	0.52		0.12	1.00	T		0.02			T					0.09	0.01			0.40		0.04	5.34	2400 EDT				
SALISBURY NWS WICOMICO CO APT	6.80	0.08			0.59	T							0.15	0.83	0.01	0.14			0.38						T	0.09	0.03		0.04	0.13		9.27	2400 EST			
WASH NATIONAL NWS ASOS	2.18	0.53		T	1.77	T					T		T	0.71	0.02	0.05			T										1.04	T	0.01	6.31	2400 EST			
WASH DULLES NWS ASOS	2.76	0.47	T	0.02	1.35	T		0.73			0.02		0.03	0.63	0.41	T									T	T			0.67	T	0.03	7.12	2400 EST			
STERLING 4 N SHAFFER	2.71	0.44	T	0.06	1.41	0.02	T	0.13	0.01		0.27	T	0.08	0.64	0.23	0.01	T		T					0.02	0.13	T		0.52	0.20		6.88	2400 EDT				
DAVIS 3 SE WV LESHER	0.13	1.12	0.07	0.02	0.71	0.10	0.31						0.13	0.08	0.02	T	T		0.09	0.09	T			0.20	0.01	0.46	T		0.41	0.01	3.96	0700 EDT				