



# ATLANTIC COAST OBSERVER NETWORK, MD / DE / DC CHAPTER WITH DATA FROM NEARBY AREAS

## TROPICAL CONNECTION BRINGS HEAVY RAINS. FIRST SNOWS FALL IN THE MOUNTAINS.

Record precipitation totals went into the record books for the second consecutive month for Washington and at many locations east of the mountains. This time it was for wetness. Washington (National Airport) broke its record of 8.81 inches set in 1937 with 9.41 inches. Many ACON observers also reported record October wetness. See page 2 for individual station records.

Temperatures averaged above normal again. They were above normal the first three weeks and below normal most of the last 10 days.

October began where September left off, that is warm and dry. Afternoon temperatures were generally in the mid 70's to lower 80's from the 2nd to the 6th.

Everything changed on the 7th. The remnants of Tropical Storm Tammy, which made landfall in the extreme northeastern Atlantic coast of Florida on the 5th, brought tropical moisture into the region. It interacted with a slow moving cold front. The result was heavy rains on the 7th and 8th. The heaviest rains fell in a band between highways I-95 and I-81. ACON observer and Sterling NWS Skywarn Spotter **Lynn Albright of Fallston 2 NW** reported a storm total of **12.02"**. 6.48" fell through 6 a.m. on Saturday 10/8 and an additional 5.54" through 6 a.m. on Sunday 10/9. She reported that nearby creeks and small streams overflowed, but all in all the rivers and grounds took it well. Below are some of the other heavier amounts reported by ACON observers:

<b>Marty Sharrow</b> of Owings Mills	9.07"
<b>Stan Rossen</b> of Glenmont 1NNE	8.99"
<b>Joe Terry</b> of Forest Glen	8.65"
<b>Rich Giannola</b> of Olney 1 S	8.05"
<b>Bobby Miller</b> of Millers 4 NE	7.85"
<b>Al Kreinik</b> of Parkton 5 SW	7.83"
<b>Rick Giannola</b> of JHU/APL	7.50"
<b>Jeff Stoudt</b> of Laurel 2 E	7.44"
<b>Ralph Hartsock</b> of Westminster 4 SSE	7.18"
<b>Herb Close</b> of Manchester 1 SW	7.12"

Tammy pulled tropical humidity into the region resulting with more summer like minimum temperatures on the 7th. **Kevin Shaw of Gaithersburg 2 WNW** reported a October record high minimum temperature of 69.

The next week remained cloudy. Rains returned from the 11th to 14th. This time the northeastern portion of the region was on the edge of flooding rains which hit the northeast from Central New Jersey to Maine. **Gary Gallaher of Bear 2 SW DE** reported 2.24 inches, the heaviest amount.. The balance of the region received generally one quarter to three quarters of an inch of rain.

Dry, mild, sunny weather returned on the 15th. The next period of rainy weather occurred from the 20th to 26th. Thunderstorms were reported by some ACON observers on the 20th, 21st, and 23rd in the DC region and southern Maryland. Rainfall amounts for the 20th to 22nd was generally in the three quarters to an inch and a half range.

Hurricane Wilma moved across Southern Florida on the 24th and raced northeast well off the east coast. It interacted with a east coast northeaster which brought heavy wet snow, the first of the season, to the Maryland Mountains and a cold rain east of the mountains from the 24th to 26th. Maximum temperatures were in the 50's on the 24th and 26th but on the 25th they failed to rise out of the 40's at most ACON stations in Maryland east of the mountains. The snow was wet and heavy. **Rebecca Harvey of Eagle Rock** reported that the leaves were still on the trees and that she lost power from 4 AM on the 25th to 5 PM on the 27th.

For NWS radar storm estimates see page 3.

### EXTREMES REPORTED BY

#### ACON OBSERVERS

##### MAXIMUM TEMPERATURE

UofD Res Ctr Georgetown	85
Smithsburg 2 NE	85
Glenmont 1 NNE	84
Forest Glen	84
Ridge	84

##### MINIMUM TEMPERATURE

Davis 3 SE WV	20
Eagle Rock	26
Parkton 5 SW	28

##### WARMEST AVG. TEMP.

Ridge	61.5
Annapolis 2 N	60.9
Baltimore 2 SE	60.6

##### COLDEST AVG. TEMP.

Davis 3 SE WV	48.8
Eagle Rock	51.0
Frostburg	51.1

##### MAXIMUM PRECIPITATION

Glenmont 1 NNE	11.52
Owings Mills	11.47
Forest Glen	11.34

##### MINIMUM PRECIPITATION

LaVale	5.24
Davis 3 SE WV	5.51
Ridge	5.92

##### MAXIMUM SNOWFALL

Davis 3 SE WV	14.5
Eagle Rock	12.0
Frostburg	3.5

Dry weather returned on the 26th. Clear calm nights resulted with many observers reporting their first frost and or sub freezing temperatures of the autumn season. Halloween began on a cold note with frost at some locations. Temperature rose 30 to 40 degrees to the 60's and 70's creating a great night for Trick or Treating.

# OBSERVER COMMENTS FOR OCTOBER 2005

## **Gary Gallaher of Bear 2 SW, DE**

Record wet October. Previous wettest was 7.75" in 1976.  
13 days with measurable precipitation, 6 days with => 0.50"  
and 1 day =>2.00" tied records for October.  
7th - 69 degree minimum tied the warmest minimum temperature for October, 39 years of records.

## **Greg Latta of Frostburg**

11th & 22nd - Fog with visibility less than 1/4 mile at obs.

## **Nate Mullins of LaVale**

1st - Light frosts on roofs.  
7th - New daily rainfall of 2.15". Old record 2.05" set on 10/20/1995.

23rd - Mostly sunny, pleasant.  
27th - AM frost and the first freeze of the season.

## **Jeff Stoudt of Laurel 2 E**

Second wettest month behind 9.99" set in 9/2003.  
7th - Rain, heavy at times, especially evening 3.37"  
8th - Rain, frequently heavy into mid afternoon 4.07"

## **Al Kreinik of Parkton 5 SW**

Wettest October on record, 11.12".  
8th - All day heavy rain, some flooding 5.88"  
9th - Showers, heavy at times.  
26th - Rainbow at sunset.

## **Marty Sharrow of Owings Mills**

7th & 8th - Heaviest rains since TS Agnes in 1972  
31st - Scattered frost, then sunny and warmer.

## **Joe Manfre of Baltimore 2SE**

1st - Sunny, mild, low humidity.  
7th - Cloudy, mild, humid, showers.

## **Herb Close of Manchester 1 SW**

Wettest October on record and the second all time wettest month on record.  
7th - 8th - Single storm precipitation record of 7.12".

## **Ralph Hartsock of Westminster 4 SSE**

7th - 8th - Heavy rain, wind, flooding - Unbelievable  
22nd - Rain, drizzle, & cold  
27th - First frost

## **Greg Klein of Westminster 5 SSE**

Wettest October in the 12 years at this location. Wettest month since July 1996 when 10.70" fell.  
7th—8th - My largest single precipitation event with 6.81".

## **Bobby Miller of Millers 4 NE**

Wettest October on record (data back to 1981). Greatest rainstorm on record. Total 7.85" fell on the 7th & 8th. No major flooding due to the record dry September.  
8th - Heavy rain early. Streams and creeks overflowed, Much cooler. Temperature fell to 50 degrees by 10 PM.  
26th - Spectacular sunset with a rainbow.  
29th - Killing frost

## **Manuel Farfan of Frederick 4 N**

7th - Cloudy with rain all day, heavy at times.  
8th - Rain all day and ending around 6 PM.  
13th - Rain on and off, cloudy with drizzle.  
25th - Rain all day, cloudy and cool.

## **Rebecca Harvey of Eagle Rock**

11th - Thunder  
25th - 26th - Heavy wet snow. Reason for so much damage

- leaves still on trees. Electric out from 4AM 10/25 to 5 PM 10/27.

## **Rich Giannola of JHU/APL**

25th - Minimum barometric pressure 29.40".

## **Rob Cohen of Potomac 4 N**

7th - 8th - Record single storm event, 6.53". Old record 5.95" in 1979 from David.

21st - Thunder @ 8 AM.

27th - Scattered light frost.

## **Rich Giannola of Olney 1 S**

Second wettest month on record. Wettest 12.06" in September 1999. Warmest October average minimum temperature since I began records in 1986.

## **Stan Rossen of Glenmont 1 NNE**

Wettest October. Previous 6.59" in 1976.  
7th - 5.35", second biggest daily total. Record 7.46" 9/5/1979.

## **Kevin Shaw of Gaithersburg 2 WNW**

Second wettest October behind 1979 when 7.91" fell.  
7th - 2.72" new daily precipitation record. 69° minimum set a monthly record for warmest minimum temperature.  
8th - 2.11" new daily precipitation record.

## **Joe Terry of Forest Glen**

Second wettest month since station inception. October had the 2nd highest occurrence of rain with approx 129 hours.  
7th - 8th - 41 hours of almost continuous rain, mostly moderate to heavy. Two day total 8.65".  
21st - Brief AM thunderstorm, first in 2 1/2 months.

## **Brian Smith of Oxon Hill**

24th - 0850 partial halo.

## **Floyd Abell of Hollywood**

Second wettest October.  
22nd - Thunderstorm before dawn.  
27th - Fair, scattered frost.

## **John Zyla of Ridge**

20th - Thunderstorm 10:13 - 11:30 PM  
22nd - Thunderstorm 2:10 - 2:30 AM

## **Max Hutto of Smithsburg 1.5 SW**

5th - AM haze, partly cloudy, warm, breezy.  
7th - Moderate / heavy rain through entire day.  
15th - Mostly sunny, warmer, very windy.

## **Greg Keefer of Hagerstown 1 E**

7th - 4.17" a rare event with over 4 inches of rain falling in one day. The record largest amount ever total in 24 hours or less was in 7/20/1956 when 6.69" fell.  
15th - Sunny, windy warmer with strong NNW winds gusting to 40 MPH.  
29th - First freeze of season. Temp below 32° for 1 hour.

## **Jim Vaughn of Smithsburg 2 NE**

Third wettest October. Record is 8.91 set in 1990.  
7th - Minimum temp of 70 broke the old maximum minimum temperature for October of 69 set on 10/04/2002

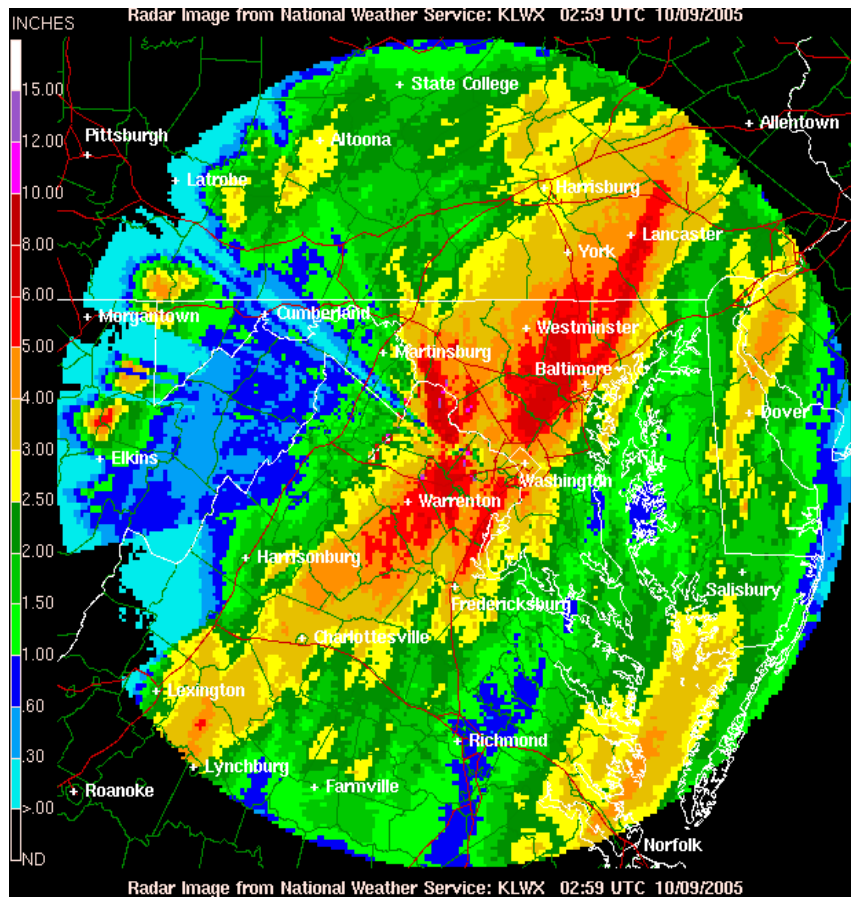
## **Lance Shaffer of Sterling 4 N VA**

9th - Nice, cool finally!  
21st - Rumble of thunder

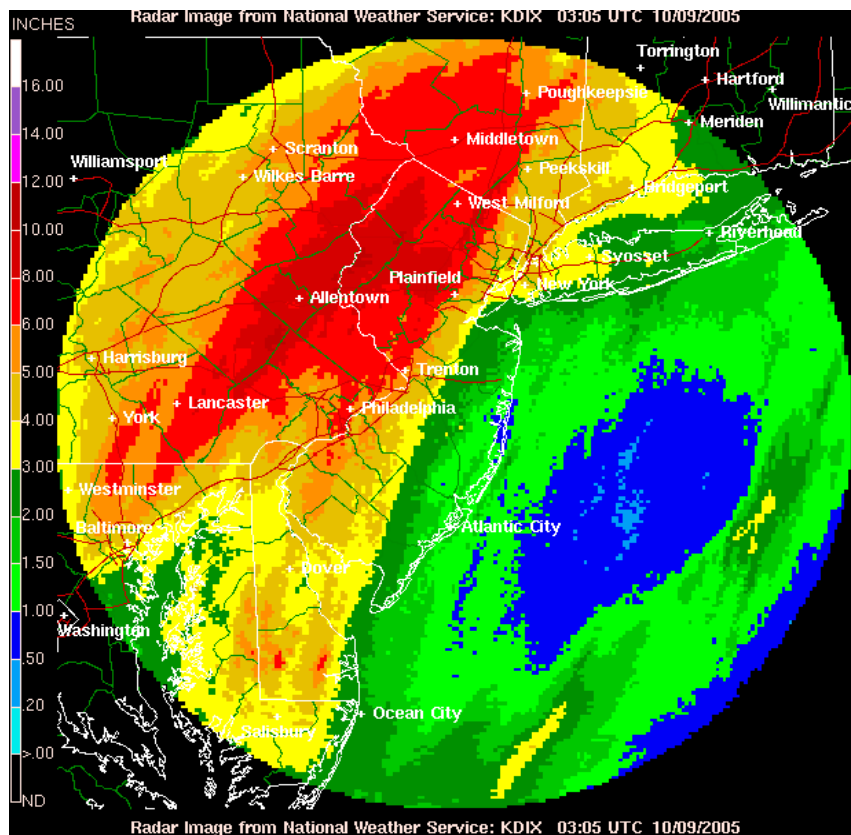
## **Dave Leshner of Davis 3 SE WV**

25th - 26th - Snow, max temp 32

Compiled by Gary Gallaher, MD/DE ACON Data Collector and Report Writer, from data received from dedicated observers. Without your observations each month this report will not be possible.



Sterling Storm Estimated Totals October 8th 10:59 PM



Mt Holly Estimated Storm Total October 8th 11:05 PM





**ACON MD / DE / DC  
OCTOBER 2005 DAILY TEMPERATURES**

STATION	1	2	3	4	5	6	7	8	9	10	11	12	13	14	15	16	17	18	19	20	21	22	23	24	25	26	27	28	29	30	31	AVG	OBS TIME	
WILMINGTON 4NNE CANAVAN																																		2400 EDT
BEAR 2 SW, DE GALLAHER	76	80	79	71	79	80	76	75	60	65	64	61	64	68	76	66	65	75	72	57	52	56	60	54	50	55	54	52	50	65	71	65.4	2400 EDT	
WILMINGTON , DE NWS NEW CASTLE CO APT	74	79	79	72	80	79	78	75	61	66	66	61	63	68	77	68	66	76	73	59	54	57	60	55	50	57	55	53	51	66	70	66.1	2400 EST	
U of D DE Townsend Farm Townsend 4 W	41	45	51	57	57	59	68	57	53	57	58	54	55	58	57	53	45	45	41	51	48	50	41	39	40	40	37	33	31	39	34	48.2	2400 EST	
GEORGETOWN, DE NWS SUSSEX CO APT	76	79	78	80	80	83	82	76	63	66	66	63	68	68	78	68	66	77	77	65	57	67	62	60	56	57	57	54	52	66	74	68.4	2400 EST	
GEORGETOWN, DE UofD RESEARCH & ED CTR	41	44	48	62	55	62	69	61	56	60	61	56	58	61	58	51	48	48	44	52	51	54	43	42	44	42	36	36	31	40	36	50.0	2400 EST	
HARBESON 8 S, DE UofD WARRINGTON FARM	72	74	74	76	76	80	80	76	63	65	64	63	67	66	76	66	65	76	76	62	56	65	60	58	56	57	56	51	51	65	74	66.6	2400 EST	
FROSTBURG LATTA	67	76	79	78	77	80	72	65	56	61	60	59	57	61	58	66	54	58	66	73	52	44	47	55	41	37	42	41	45	46	58	59.1	0700 EST	
LAVALE MULLINS**	79	78	80	81	82	75	73	64	64	63	63	63	62	64	72	62	65	75	78	55	55	50	56	52	42	48	47	48	56	68	65	64.0	2400 EDT	
ANNAPOLIS 2 N BRYANT	73	77	76	74	77	76	77	75	63	65	66	64	65	79	75	67	67	75	71	64	59	60	63	60	50	58	56	55	55	63	64	66.7	2400 EDT	
MILLERSVILLE 1SE HANSON	75	79	78	74	77	78	75	75	62	65	64	63	62	72	78	67	68	77	75	61	54	57	63	57	47	57	56	54	52	66	72	66.5	2400 EDT	
LOTHIAN JUG BAY	M	79	82	81	77	80	82	77	76	64	65	65	65	63	73	77	69	70	79	77	66	57	60	66	59	47	59	59	56	57	68	68.5	0900 EDT	
BALTIMORE NWS BWI APT	76	79	78	74	78	78	75	74	61	65	65	63	62	72	77	67	67	77	75	61	55	56	62	58	47	56	56	54	52	65	74	66.4	2400 EST	
LAUREL 2 E STOUDT	42	48	50	61	60	60	69	54	54	58	61	54	54	60	55	48	47	51	46	53	49	49	44	44	41	40	37	33	32	35	33	49.1	2400 EST	
PARKTON 5SW KREINIK	77	82	79	75	80	78	73	69	57	63	62	62	60	66	76	66	66	75	75	61	49	53	62	60	52	55	54	53	49	67	72	65.4	2200 EDT	
OWINGS MILLS 2SE SHARROW	41	43	51	52	55	54	68	52	50	50	58	52	52	55	54	43	43	40	39	48	45	47	46	39	39	38	34	33	28	36	33	45.7	2400 EDT	
BALTIMORE 2SE MANFRE	74	77	75	74	75	74	72	71	58	64	62	61	60	67	72	61	63	72	74	60	51	54	53	60	57	46	55	53	53	53	63	72	65.7	2400 EST
PARKTON 5SW KREINIK	77	82	79	75	80	78	73	69	57	63	62	62	60	66	76	66	66	75	75	61	49	53	62	60	52	55	54	53	49	67	72	65.4	2200 EDT	
OWINGS MILLS 2SE SHARROW	41	43	51	52	55	54	68	52	50	50	58	52	52	55	54	43	43	40	39	48	45	47	46	39	39	38	34	33	28	36	33	45.7	2400 EDT	
BALTIMORE 2SE MANFRE	76	82	81	79	80	79	77	75	64	66	66	64	63	73	78	68	69	77	77	60	55	57	62	58	49	57	57	56	51	66	71	67.5	1800 EDT	
BALT INNER HARBOR MD SCIENCE CENTER	53	60	61	64	65	68	70	57	54	59	61	57	56	61	59	50	51	54	53	52	50	51	47	48	43	46	43	44	40	43	44	53.7	2400 EST	
BALT INNER HARBOR MD SCIENCE CENTER	77	81	80	78	80	79	76	74	62	65	66	64	63	73	78	66	67	77	77	65	55	57	62	58	48	57	56	54	52	66	71	67.2	2400 EST	
MANCHESTER 1SW CLOSE	53	59	60	64	65	68	71	55	54	59	62	56	55	61	59	53	50	54	53	51	50	51	47	48	43	41	43	42	40	43	43	53.3	2400 EST	
MANCHESTER 1SW CLOSE	77	81	79	77	77	78	71	69	57	61	60	59	57	68	74	64	66	74	75	66	49	52	61	54	43	54	51	53	50	65	72	64.3	2300 EDT	
WESTMINSTER 4 SSE HARTSOCK	48	54	56	59	62	61	67	50	49	53	57	51	51	57	53	47	46	52	49	48	44	47	44	43	37	37	35	36	34	39	47	48.8	2400 EDT	
WESTMINSTER 4 SSE HARTSOCK	70	75	76	77	78	79	70	70	60	63	62	60	59	68	72	63	61	72	69	60	51	53	56	53	46	53	51	50	47	58	64	62.8	1900 EDT	
WESTMINSTER 4 SSE HARTSOCK	40	47	48	55	61	57	67	53	51	53	54	57	51	57	52	48	44	45	43	47	45	47	43	44	39	36	35	34	31	37	36	47.0	2400 EDT	
WESTMINSTER 5 SSE KLEIN	70	73	73	75	74	75	69	67	56	60	60	60	56	64	69	61	60	69	68	61	49	51	54	54	43	49	47	48	45	57	63	60.6	2200 EDT	
WESTMINSTER 5 SSE KLEIN	44	50	51	57	61	58	65	51	50	53	56	51	50	55	53	46	45	47	46	48	45	45	43	43	37	37	34	35	34	40	45	47.6	2400 EDT	
MILLERS 4NE MILLER	76	82	81	80	81	78	74	70	57	62	61	59	58	66	74	66	65	73	74	69	51	52	59	58	47	54	51	50	50	65	71	65.0	1800 EDT	
MILLERS 4NE MILLER	42	49	48	55	63	58	68	53	49	53	57	53	50	56	55	49	46	44	43	48	45	47	43	41	40	37	33	32	30	38	39	47.2	2400 EDT	
WESTMINSTER CITY MULLER	76	83	81	77	80	80	72	70	60	63	63	60	60	66	75	65	63	76	75	60	58	54	60	56	45	53	50	51	52	65	72	65.2	2200 EDT	
WESTMINSTER CITY MULLER	46	50	52	60	63	61	69	53	52	52	57	53	51	57	54	49	47	47	46	51	49	47	46	45	40	39	36	36	34	32	37	48.7	2400 EDT	
FREDERICK 4 N FARFAN	77	81	80	79	81	77	72	71	61	66	64	63	61	68	75	63	66	75	76	58	51	53	61	56	46	53	53	49	53	64	71	65.3	2400 EDT	
FREDERICK 4 N FARFAN	41	48	49	56	59	59	69	56	55	54	60	54	54	59	55	46	46	46	43	51	47	49	48	46	42	42	37	36	36	38	32	48.8	2400 EDT	
EAGLE ROCK HARVEY	70	78	80	80	78	80	78	66	56	64	70	72	58	62	50	64	50	56	68	70	54	44	50	50	40	34	36	40	42	44	58	59.4	0800 EST	
EAGLE ROCK HARVEY	38	52	50	50	50	58	60	54	48	46	48	50	54	44	46	40	40	40	44	48	40	40	34	40	28	28	26	30	28	30	32	42.5	2400 EDT	
FALLSTON 2 NW ALBRIGHT																																		2400 EDT

**ACON MD / DE / DC  
OCTOBER 2005 DAILY TEMPERATURES**

STATION	1	2	3	4	5	6	7	8	9	10	11	12	13	14	15	16	17	18	19	20	21	22	23	24	25	26	27	28	29	30	31	AVG	OBS TIME
LAUREL JHU / APL	78	81	79	75	79	77	74	72	60	64	63	63	60	68	76	63	66	77	76	65	53	55	61	57	45	54	52	51	50	64	75	65.6	2400
GIANNOLA	44	51	51	60	63	63	69	54	53	57	60	53	53	58	57	50	50	53	47	51	48	49	47	44	40	40	39	36	35	42	37	50.1	EDT
POTOMAC 4N	79	83	82	78	83	79	73	71	59	65	62	62	59	65	74	67	69	79	80	62	62	55	63	58	48	55	54	54	53	65	74	66.8	2100
COHEN	45	52	51	59	65	64	69	57	54	54	60	56	54	58	55	50	49	47	45	53	49	49	46	48	42	40	36	40	34	37	35	50.1	EDT
OLNEY 1 S	75	78	77	75	77	76	73	>	71	63	62	62	59	66	74	64	67	76	75	65	52	55	60	56	46	52	54	52	51	65	72	65.0	2400
GIANNOLA	46	52	53	60	64	63	69	>	54	56	59	55	53	58	53	48	49	50	48	51	48	48	46	46	40	39	36	38	36	42	39	50.0	EDT
MONTGOMERY VILLAGE	75	79	77	75	79	78	72	71	61	65	63	63	59	66	75	64	66	75	75	59	53	55	61	58	46	55	53	51	64	71	65.0	2400	
ROTH 1SW	46	52	51	59	64	64	69	59	54	57	60	54	54	58	57	51	49	49	47	53	48	49	48	45	41	40	36	38	36	41	36	50.5	EDT
GLENMONT 1NNE	81	84	82	75	83	77	74	72	61	64	63	63	60	68	77	66	68	77	79	60	53	56	64	59	46	55	55	52	53	67	76	66.8	2400
ROSSEN	44	49	50	58	63	63	68	56	55	57	60	54	54	59	52	49	46	48	44	53	50	48	46	46	42	41	34	34	34	38	35	49.4	EST
BETHESDA	73	76	75	74	77	77	73	72	61	65	63	63	60	67	75	63	66	75	72	60	53	55	60	58	46	53	52	51	51	63	68	64.4	2400
SCAFIDE	46	53	53	61	65	66	69	55	55	57	60	55	54	59	55	48	49	48	47	53	49	50	48	46	41	41	36	38	36	38	38	50.6	EDT
GAITHERSBURG 2WNW	74	78	77	78	78	79	73	71	59	64	61	62	59	66	73	62	65	73	72	60	51	55	57	57	44	51	51	50	50	61	67	63.8	2400
SHAW	42	50	49	57	62	62	69	54	53	54	58	54	52	57	52	45	47	46	44	50	47	47	43	44	40	39	32	34	33	38	33	48.0	EDT
FOREST GLEN	79	83	81	77	84	81	75	72	63	67	64	65	61	72	77	68	69	78	77	63	53	56	64	59	46	59	58	56	53	67	75	67.8	2400
TERRY	45	51	51	60	65	66	69	57	55	57	60	55	54	59	55	49	46	46	46	53	49	49	46	46	41	40	35	35	34	35	35	49.8	EDT
ROCKVILLE 1NE	76	78	79	78	78	77	71	70	60	64	63	63	59	66	75	63	64	74	74	61	52	54	59	56	44	53	53	50	50	63	69	64.4	2400
WASH GAS LIGHT	45	52	52	59	64	63	68	56	54	56	59	55	53	58	57	53	53	52	48	52	48	49	49	44	40	40	38	36	36	43	38	50.6	EDT
OXON HILL	80	81	79	75	80	81	76	74	64	67	64	65	62	69	78	67	69	78	77	64	55	57	63	58	47	57	54	54	53	55	70	66.9	2300
SMITH	46	52	54	64	62	66	69	58	56	58	62	57	56	60	58	53	51	50	48	55	52	52	46	47	41	42	40	40	37	40	39	52.0	EDT
HOLLYWOOD	76	80	80	78	80	82	78	76	63	64	64	64	63	71	79	69	69	79	78	65	57	62	64	60	50	60	58	57	54	69	75	68.5	2359
ABELL	47	51	53	63	66	65	72	59	58	60	62	56	56	61	57	56	45	49	48	52	52	52	44	44	42	41	37	40	32	36	41	51.5	EDT
RIDGE	75	78	79	79	80	84	79	75	62	67	66	67	66	73	78	71	68	80	76	66	65	66	63	59	48	58	58	55	55	66	68	68.7	2400
ZYLA	55	58	57	66	68	71	71	61	57	61	62	57	56	61	57	55	49	53	55	54	54	51	46	51	42	43	40	41	38	45	48	54.3	EDT
SMITHSBURG 1.5 SW	76	81	81	76	80	78	71	70	61	65	63	62	60	66	74	61	65	74	77	57	50	52	60	54	45	53	49	49	53	65	70	64.5	2400
HUTTO	39	47	48	50	59	56	58	54	53	52	59	55	53	58	50	46	45	50	40	48	45	48	44	45	40	39	32	34	31	33	30	46.5	EDT
HAGERSTOWN 1E	78	83	83	77	83	78	70	70	61	66	63	62	61	68	75	63	68	76	78	60	51	52	61	54	45	53	49	50	54	66	71	65.5	2400
KEEFER	41	50	51	53	61	59	68	54	53	53	58	55	54	58	50	46	48	50	43	50	46	49	44	45	41	39	33	35	31	32	31	47.8	EDT
SMITHSBURG 2 NE	78	85	83	80	81	81	74	72	60	68	64	62	61	67	76	64	65	76	76	67	51	53	60	53	45	52	55	52	51	65	69	66.0	2400
VAUGHN	47	53	53	58	66	62	70	55	53	53	58	54	53	57	53	49	50	54	44	48	44	48	44	44	39	39	36	34	34	39	37	49.3	EDT
SALISBURY	77	78	79	82	79	85	81	76	63	66	65	63	69	67	77	67	66	76	76	66	58	67	62	58	56	57	56	55	52	64	74	68.3	2400
NWS WICOMICO CO APT	34	38	45	60	58	64	68	61	56	60	61	56	57	61	56	47	43	41	38	51	51	53	38	37	43	40	31	31	29	32	30	47.4	EST
WASH NATIONAL	77	82	81	76	81	81	77	73	64	69	65	66	62	69	80	68	69	79	76	64	56	57	63	59	48	58	57	54	53	67	71	67.8	2400
NWS ASOS	52	57	57	66	65	68	70	57	56	59	62	56	55	60	57	53	51	51	51	55	51	51	48	47	42	43	42	40	40	42	41	53.1	EST
WASH DULLES	83	81	81	80	82	81	75	72	63	70	65	66	62	70	80	65	69	79	77	63	54	55	63	60	46	56	56	53	53	68	73	67.8	2400
NWS ASOS	42	56	51	61	63	64	69	57	55	57	60	56	54	59	52	53	47	47	43	53	49	48	47	46	41	39	33	35	33	39	33	49.7	EST
STERLING 4 N	75	80	79	78	81	78	74	73	62	71	65	65	62	68	78	65	69	75	76	65	53	56	65	63	47	55	56	53	55	67	73	67.2	2400
SHAFFER	45	52	53	60	65	65	69	58	56	58	62	62	57	60	58	53	54	49	46	54	50	52	49	50	42	41	37	38	36	44	36	52.0	EST
DAVIS 3 SE WV	61	69	73	71	71	72	70	65	56	64	70	65	64	62	51	60	45	52	61	66	60	63	51	46	39	32	32	33	35	36	52	56.4	0700
LESHER	33	49	51	52	52	55	57	56	45	46	51	49	45	44	48	39	36	36	42	45	49	47	33	33	27	27	25	24	20	28	30	41.1	EDT

**ACON MD / DE / DC**  
**OCTOBER 2005 DAILY PRECIPITATION**

STATION	1	2	3	4	5	6	7	8	9	10	11	12	13	14	15	16	17	18	19	20	21	22	23	24	25	26	27	28	29	30	31	TOTAL	OBS TIME				
WILMINGTON 4NNE CANAVAN																																	2400 EDT				
BEAR 2 SW, DE GALLAHER				0.02		T	0.78	2.71	0.03		0.16	0.74	1.34	T				0.01		T	0.21	0.78		0.41	0.70	0.04						7.93 0.0	2400 EDT				
WILMINGTON, DE NWS NEW CASTLE CO APT				0.02			0.88	2.52	0.03		0.17	0.94	1.46	T				T		T	0.21	0.81		0.27	0.46	0.02						7.79 0.0	2400 EST				
U of D DE Townsend Farm Townsend 4 W				0.01		0.33	0.54	2.18	0.03		0.35	0.12	0.60	0.09							0.19	0.56		0.63	0.70	0.04						6.37 0.0	2400 EST				
GEORGETOWN, DE NWS SUSSEX CO APT				0.02		0.21	0.56	3.93	0.01	0.33	0.15	0.08	0.36	0.03						0.05	0.19	1.31		0.68	0.49	T						8.40 -	2400 EST				
GEORGETOWN, DE UofD RESEARCH & ED CTR				0.03			0.54	3.68	0.03	0.54	0.18	0.02	0.29	0.03						0.11	0.22	1.41		0.65	0.32	0.02							8.07 0.0	2400 EST			
HARBESON 8 S, DE UofD WARRINGTON FARM				0.02			0.17	3.00		0.01	0.07	0.22	0.61	0.08						0.08	0.20	1.47		0.70	0.61	0.01							7.25 0.0	2400 EST			
FROSTBURG LATTA							0.35	1.76	0.26		0.23	0.10	0.03	0.01							0.45	0.42	0.15	0.16	1.38	0.56	0.03		0.20				6.09 3.5	0700 EST			
LAVALE MULLINS**							2.15	0.30	T	0.01	0.45	0.01	T	T						0.01	0.40	0.33		0.89	0.67	0.01			0.01				5.24 0.0	2400 EDT			
ANNAPOLIS 2 N BRYANT					T	0.18	2.96	1.57		T	0.47	T	0.33	0.03						T	0.14	0.48	0.91	0.08	0.51	0.67			T				8.33 0.0	2400 EDT			
MILLERSVILLE 1SE HANSON						0.04	0.97	2.08			0.17	0.02	0.21	0.01							0.33	0.54		0.30	0.55	0.01								5.23 0.0	2400 EDT		
LOTHIAN JUG BAY	M	T	T	T	T		0.12	2.59	0.65	0.01	0.20	0.17	0.21	0.09	T	T			0.01	T	0.01	1.03	0.22	T	0.79	0.30	0.01		0.01	0.01	T			6.43 0.0	0900 EDT		
BWI NWS ASOS						0.07	2.28	4.37	T	T	0.14	0.03	0.43	T				T		T	0.28	0.60		0.41	0.62	T								9.23 0.0	2400 EST		
LAUREL 2 E STOUDT						0.01	3.37	4.07	T	T	0.11	0.01	0.46	0.01						T	0.30	0.60		0.40	0.61	T								9.95 0.0	2400 EST		
PARKTON 5SW KREINIK							1.55	5.88	0.40	0.03	0.03	0.02	0.20	0.11						T	0.22	0.79	0.60		1.11	0.15	0.02								11.11 0.0	2200 EDT	
OWINGS MILLS 2SE SHARROW						T	4.31	4.76		T	T	T	0.16							T	0.47	0.71		0.23	0.83	T			T						11.47 0.0	2400 EDT	
BALTIMORE 2SE MANFRE					0.01	0.02	1.80	3.91			0.15	T	0.36							T	0.26	0.62		0.16	0.75										8.04 0.0	1800 EDT	
BALT INNER HARBOR MD SCIENCE CENTER						0.02	1.97	4.54			0.14		0.24								0.26	0.59		0.21	0.53										8.50 -	2400 EST	
MANCHESTER 1SW CLOSE							4.41	2.71	0.01		0.02	0.07	0.32	0.02						T	0.30	1.02	0.01	0.24	0.93	0.05									10.11 0.0	2300 EDT	
WESTMINSTER 4 SSE HARTSOCK							3.37	3.81		T	0.04	0.02	0.25	T						0.02	0.25	1.03	0.16	T	0.92	0.15									10.02 0.0	1900 EDT	
WESTMINSTER 5 SSE KLEIN							4.00	2.81			0.04		0.42	0.02						0.01	0.26	1.17		0.23	1.10	0.05									10.11 0.0	2200 EDT	
MILLERS 4NE MILLER				T		T	3.16	4.63	0.06	T	0.02	0.03	0.22	0.10	T					T	0.21	0.82	0.24	T	1.17	0.23	0.02	T							10.91 0.0	1800 EDT	
WESTMINSTER CITY MULLER				T		T	3.93	2.38	T	T	0.03	0.04	0.24	T						0.10	1.07		0.08	1.05	0.08										9.00 0.0	2200 EDT	
FREDERICK 4 N FARFAN						0.03	3.25	1.20			0.04	0.01	0.17	0.05						0.01	0.51	0.58		0.18	1.02	0.01									7.06 0.0	2400 EDT	
EAGLE ROCK HARVEY							0.92	0.80	0.05		0.32	0.03	0.02								0.92	0.63	0.42	0.30	1.32	1.05	0.02			T					6.80 12.0	0800 EST	
FALLSTON 2 NW ALBRIGHT																																					2400 EDT

**ACON MD / DE / DC**  
**OCTOBER 2005 DAILY PRECIPITATION**

STATION	1	2	3	4	5	6	7	8	9	10	11	12	13	14	15	16	17	18	19	20	21	22	23	24	25	26	27	28	29	30	31	TOTAL	OBS TIME
LAUREL JHU / APL GIANNOLA						0.01	3.50	4.00			0.06	T	0.09	0.04							0.22	0.58		0.26	0.61	0.01						9.38	2400
POTOMAC 4N COHEN							2.29	4.24			0.14		0.15	0.16						T	0.20	0.98		0.13	1.35	0.07						9.71	2100
OLNEY 1 S GIANNOLA						0.01	>	8.05			0.14	0.02	>	0.18						0.02	>	1.12		>	1.41	T						10.95	2400
MONTGOMERY VILLAGE ROTH 1SW							2.36	2.32	0.04		0.08	0.01	0.12	0.04						0.02	0.38	0.87		0.43	0.83	0.04						7.54	2400
GLENMONT 1NNE ROSSEN						0.02	5.35	3.64			0.10	0.04	0.19	0.02						T	0.22	0.66		0.52	0.76	T						11.52	2400
BETHESDA SCAFIDE						0.03	2.82	3.87			0.11	0.01	0.17	0.03							0.21	0.57		0.46	0.72	0.01						9.01	2400
GAITHERSBURG 2WNW SHAW						0.01	2.72	2.11			0.04	T	0.11	0.02						0.02	0.25	0.76		0.52	1.03	0.03						7.62	2400
FOREST GLEN TERRY						0.02	4.70	3.95			0.12	0.01	0.23	0.02							0.31	0.65		0.44	0.88	0.01						11.34	2400
ROCKVILLE 1NE WASH GAS LIGHT						T	1.98	4.36	T		0.10	0.01	0.16	0.01							0.27	0.87		0.57	0.58	T						8.91	2400
OXON HILL SMITH						0.01	2.56	3.51		T	0.20	0.04	0.21	0.02							0.05	1.10		0.46	1.00	0.01						9.17	2300
HOLLYWOOD ABELL						0.33	0.98	1.93		0.08	1.16	0.03	0.09	0.02							0.15	0.31	0.70		0.54	0.49	0.02					6.83	2359
RIDGE ZYLA						0.01	0.25	2.17		T	0.11		0.15								0.84	0.80	0.49		0.63	0.47						5.92	2400
SMITHSBURG 1.5 SW HUTTO						0.20	4.12	0.64			0.13	0.01	0.09	0.08						T	0.53	0.37		0.09	1.69	0.03		T	0.01			7.99	2400
HAGERSTOWN 1E KEEFER						0.17	4.17	0.63			0.09	T	0.04	0.13						T	0.52	0.31		0.05	1.64	0.03		0.02				7.80	2400
SMITHSBURG 2 NE VAUGHN						T	2.90	0.80	0.01	T	0.09	T	0.16	0.12						T	0.52	0.55		0.26	1.67	0.05		0.01				7.14	2400
SALISBURY NWS WICOMICO CO APT			0.01	0.01		T	0.87	4.92		T	0.06	0.07	0.04	0.19	0.03						0.34	0.47	0.41		0.74	0.32				0.01		8.49	2400
WASH NATIONAL NWS ASOS						0.04	3.63	3.67			0.09	0.02	0.14	0.01							T	0.04	0.61		0.57	0.59						9.41	2400
WASH DULLES NWS ASOS						0.33	3.50	2.79		T	0.13	T	0.11	0.03							T	0.22	0.73		0.55	0.83	T					9.22	2400
STERLING 4 N SHAFFER						0.37	2.92	2.82	T		0.06	0.02	0.08	0.08								0.26	0.70		>	1.38						8.69	2400
DAVIS 3 SE WV LESHER						0.37	0.63	0.08			0.31	0.01			T						0.87	0.95	0.32	0.05	1.08	0.77	0.03		0.04			5.51	0700
																							T		7.4	6.1	0.4		0.6			14.5	EDT